

Balkans Theater of Operations



OPERATION IRON WOLF

-Range Day March 14, 2017-

„MONGIBELLO TARGET RANGE/SICILY“

-Air to Ground Live Firing Task Force Balkan-



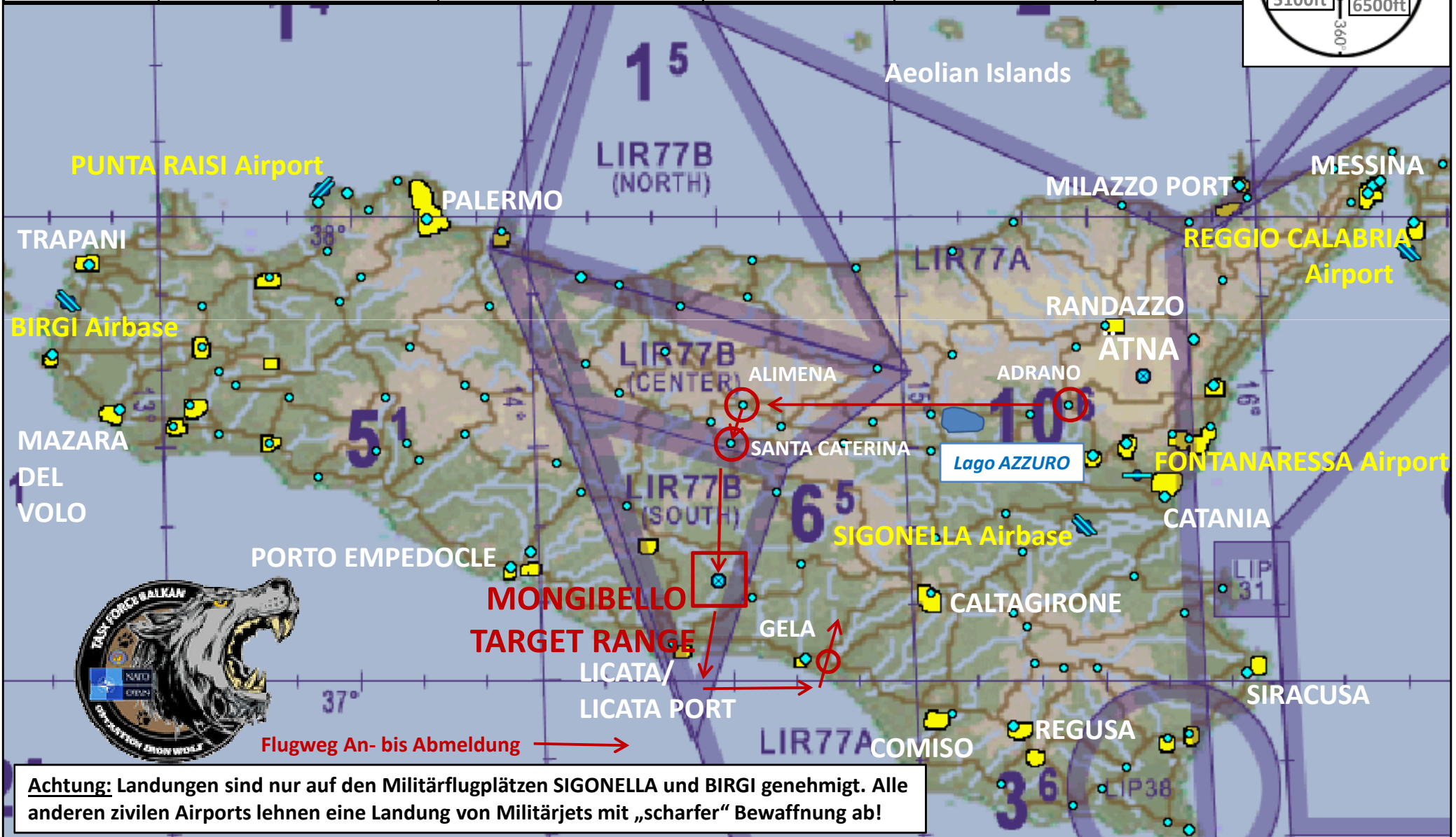
ITALY NAVIGATION VOLUME

Date: 24. Nov 2016

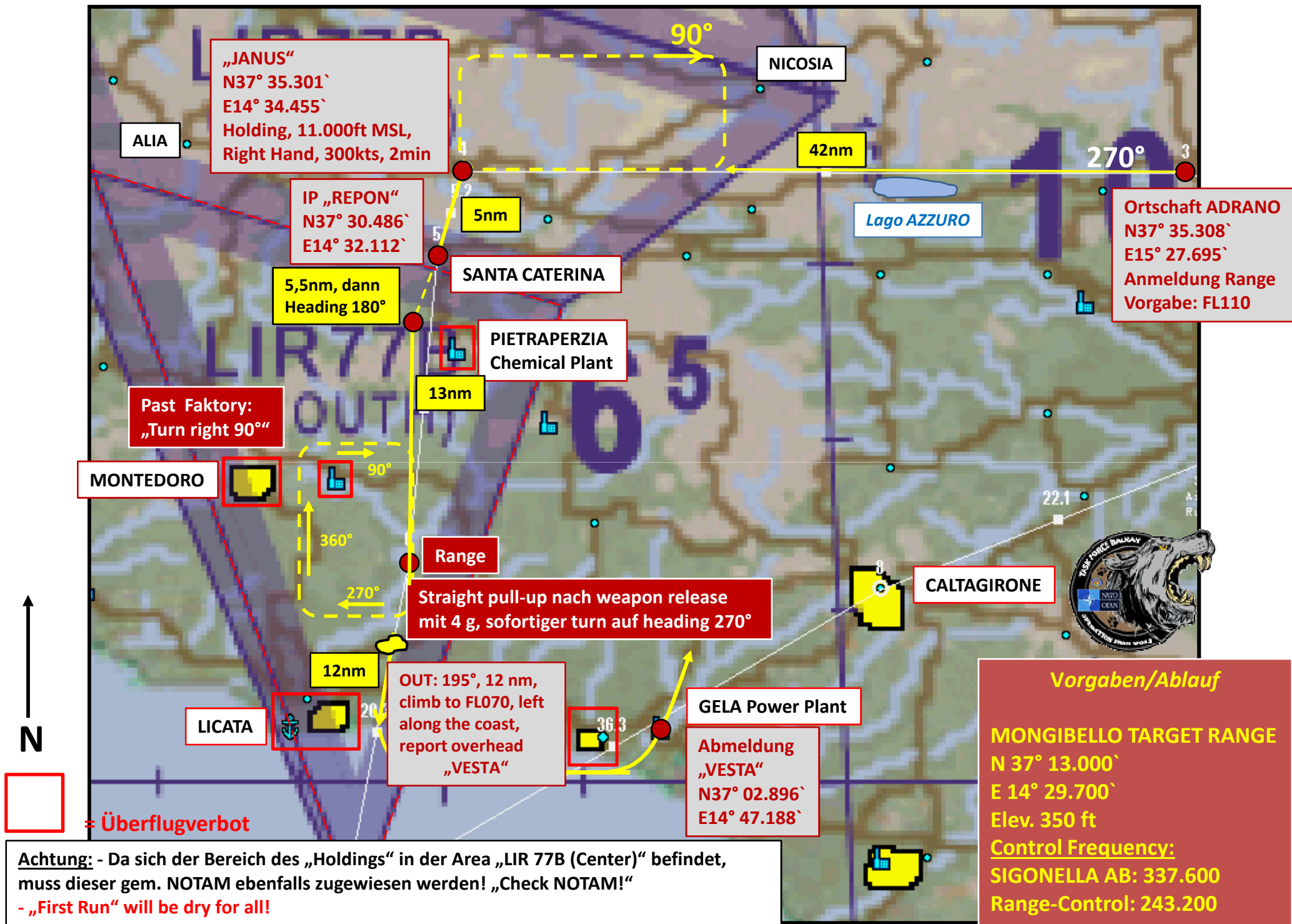
MONGIBELLO Target Range/ Italy

AREA CHART (by Dro16)

TACAN: N.A.	RNG CONTROL 337.600 (SIGONELLA) 243.200 (HUMAN)	AIRSPACE: LIR 77B- SOUTH From GND to FL250	Run-In: 185° (+-10°)	GPS: N37° 13.000` E14° 29.700`	ELEV: 350ft	
----------------	--	--	-------------------------	--------------------------------------	----------------	--



Achtung: Landungen sind nur auf den Militärflugplätzen SIGONELLA und BIRGI genehmigt. Alle anderen zivilen Airports lehnen eine Landung von Militärjets mit „scharfer“ Bewaffnung ab!



„JANUS“
 N37° 35.301`
 E14° 34.455`
 Holding, 11.000ft MSL,
 Right Hand, 300kts, 2min

IP „REPON“
 N37° 30.486`
 E14° 32.112`

5,5nm, dann
 Heading 180°

SANTA CATERINA

PIETRAPERZIA
 Chemical Plant

Past Faktory:
 „Turn right 90°“

MONTEDORO

Range

Straight pull-up nach weapon release
 mit 4 g, sofortiger turn auf heading 270°

12nm

OUT: 195°, 12 nm,
 climb to FL070, left
 along the coast,
 report overhead
 „VESTA“

GELA Power Plant

Abmeldung
 „VESTA“
 N37° 02.896`
 E14° 47.188`

LICATA

CALTAGIRONE

Vorgaben/Ablauf
MONGIBELLO TARGET RANGE
 N 37° 13.000`
 E 14° 29.700`
 Elev. 350 ft
Control Frequency:
SIGONELLA AB: 337.600
Range-Control: 243.200

 = Überflugverbot

Achtung: - Da sich der Bereich des „Holdings“ in der Area „LIR 77B (Center)“ befindet,
 muss dieser gem. NOTAM ebenfalls zugewiesen werden! „Check NOTAM!“
 - „First Run“ will be dry for all!

**LIR77B Center/South
Grenzen und Flugbeschränkungen**



LIR77B
(CENTER)

Holding-Area

LIR77B
(SOUTH)

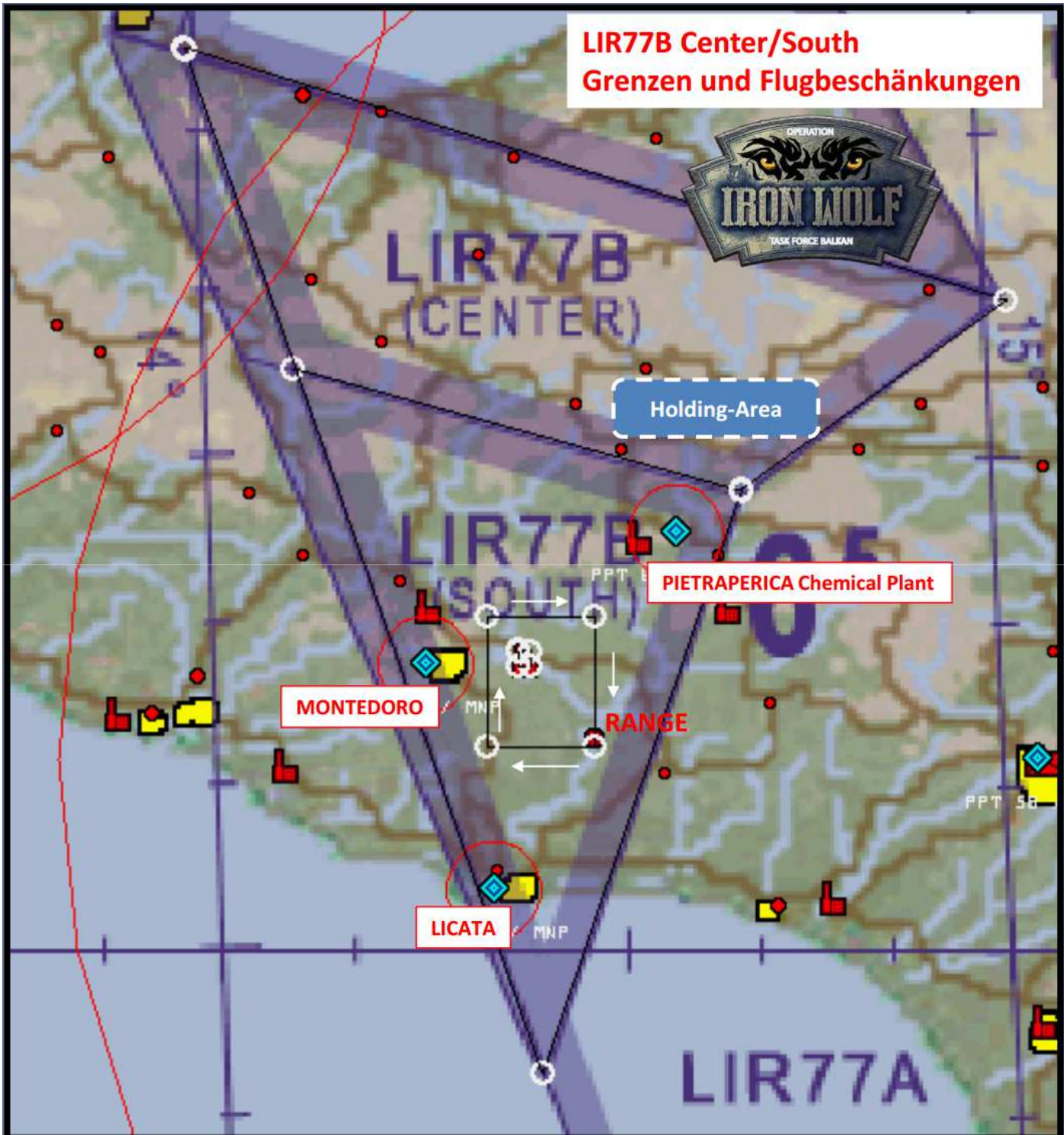
PIETRAPERICA Chemical Plant

MONTEDORO

RANGE

LICATA

LIR77A



LIR77B South
MONGIBELLO Target Range
Flugbeschränkungen/“Box Pattern“



Run in

360

7.5

180

RANGE

Standard „box pattern“

Straight pull-up nach weapon
release mit 4 g, sofortiger turn auf
heading 270°

PPT 57 / MNP

Ortschaft MONTEORO
-kein Überflug-

Industrieanlage
MONTEORO
-kein Überflug-



ITALY NAVIGATION VOLUME

RANGE DIAGRAM

(by Dro16)

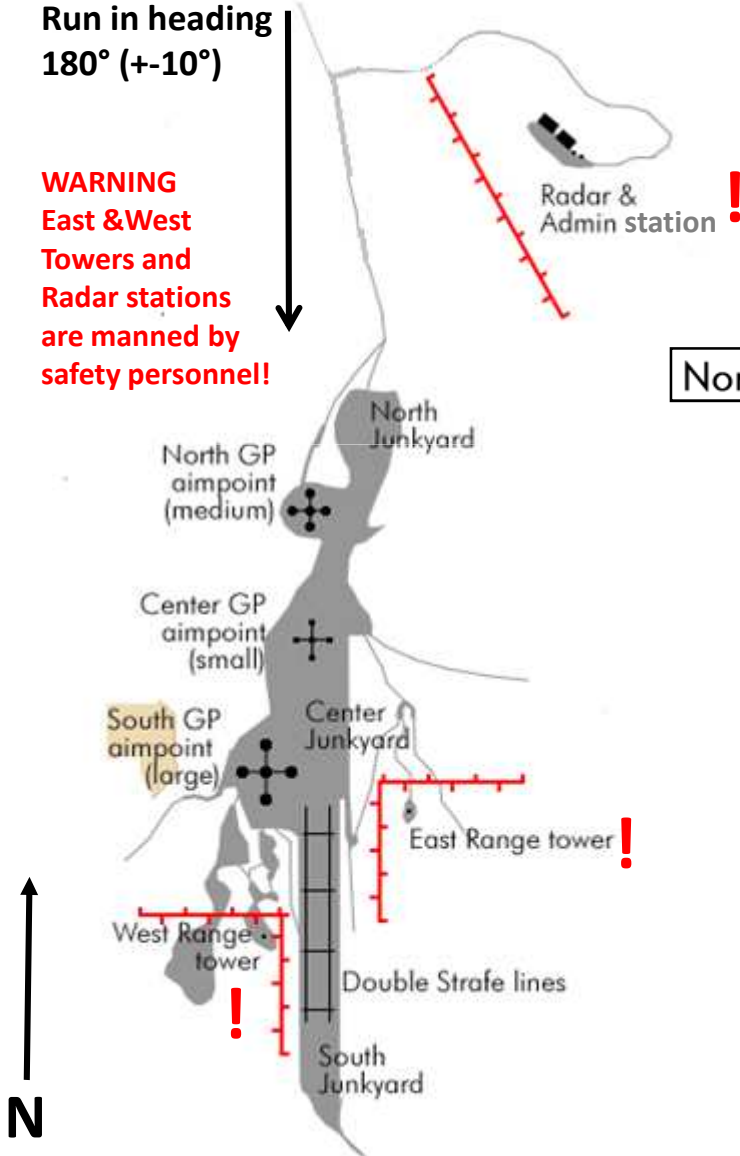
Date: 24. Nov 2016

MONGIBELLO Target Range/ Italy

TACAN: N.A.	RNG CONTROL 337.600 (SIGONELLA) 243.200 (HUMAN)	AIRSPACE: LIR 77B- SOUTH From GND to FL250	Run-In: 185° (+-10°)	GPS: N37° 13.000` E14° 29.700`	ELEV: 350ft	

Run in heading
180° (+-10°)

WARNING
East & West
Towers and
Radar stations
are manned by
safety personnel!



North Junkyard:

- Mig-15 #1
- Mig-15 #2
- Mig-15 #3
- Mig-15 #4
- Mig-15 #5
- Mig-15 #6
- Mig-15 #7
- Mig-15 #8

North GP aimpoints (medium):

- Crater North
- Crater Center
- Crater East
- Crater West
- Crater South

Center Junkyard:

- F-4 #1
- F-4 #2
- F-4 #3
- F-4 #4
- F-4 #5
- F-4 #6
- Mig-15 #1 Huey #1
- Mig-15 #2 Huey #2
- Mig-15 #3 Huey #3
- Mig-15 #3 M2A3 #1
- Mig-15 #4 M2A3 #2
- Mig-15 #5 M2A3 #3
- Mig-15 #6 M2A3 #4
- Mig-15 #7 M2A3 #5
- Mig-15 #8 M2A3 #6

TARGET LIST



South GP aimpoints (large targets):

- Target North
- Target Center
- Target East
- Target West
- Target South

Center GP aimpoints (small):

- Crater North
- Crater Center
- Crater East
- Crater West
- Crater South

Double Strafe Line targets:

- West Row #1
- West Row #2
- West Row #3
- West Row #4
- East Row #1
- East Row #2
- East Row #3
- East Row #4

South Junkyard:

- M2A3 #1
- M2A3 #2
- M2A3 #3
- M2A3 #4
- M2A3 #5

Flight	Ziel*	Event	Mode	Roster
Falcon1 (Strike1) TO: 1330Z	North Junkyard: MiG-15 1.1 1.2 1.3 1.4	30° DB	CCIP	Fatality Sledge Slick Keule
Fury1 (Strike2) TO: 1336Z	South Junkyard: M2A3 Center Junkyard „Middle“: F-4 1.1 1.2 1.3 1.4	30° DB	CCIP	Caruso Paladin Caesar Sneakpeek
Cowboy1 (Strike3) TO: 1332Z	Center Junkyard: M2A3 Center Junkyard „North“: F-4 1.1 1.2 1.3 1.4	30° DB	CCIP	Dro16 Frosty BadCrow Fireball
Lobo1 (Strike4) TO: 1334Z	Center Junkyard „South“: F-4 Target 7 1.1 1.2 1.3 1.4	30° DB	CCIP	Cupra TheWitch Bluebird

*Ground/ATC/AWACS/Range-Control by Capt Ziri and Maj Sparrow

*Genaue Festlegung durch Lead!

1st Run: „Dry“

2nd und 3rd Run: BDU-33D/B, Pair, 30° Dive Bombs

TO/ARR: SIGONELLA Air Base, erste Teile ab 1330Z

Weather Forecast: sunny, Wind calm, NOSIG

Flights stellen sich auf einen 2. Auftrag im Rahmen einer HAVCAP-Forderung ein!

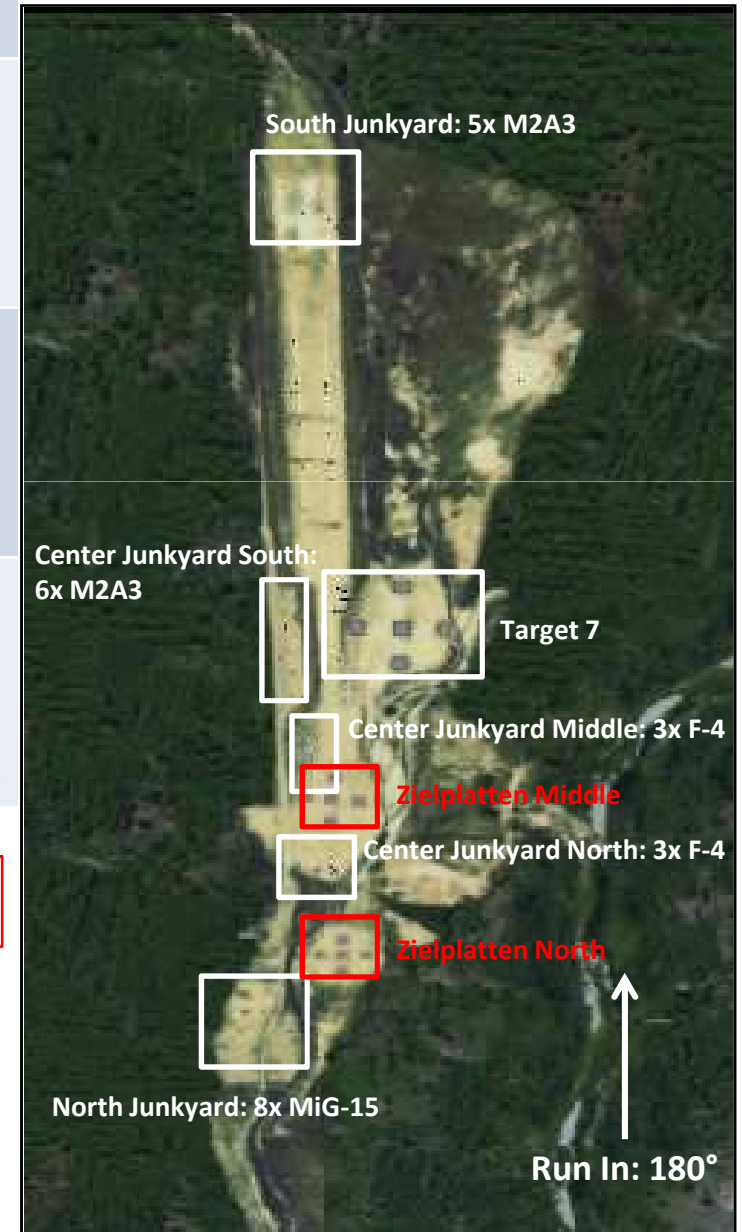
Panther1 (Strike 5) 1338Z: Hunter, Toschi, Opasi
Auftrag s.o., Zielplatten North/Middle

Good Luck!

Der C/O

ANNEX1 zum Range-Day

Roster und
Zielverteilung
„MONGIBELLO Target Range“





	MONGIBELLO (Elev. 350ft MSL)		RANGE	PARAMETER		
EVENT:	Base Alt MSL	Base Speed (CAS)	Min Release Alt MSL / (AGL)	Fuel Alt MSL / (AGL)	Fuse Arm delay setting	Bomb TOF Time of flight (sec)
10° Low Drag Bombs	3400	375 Kts	1650 (1300)	1350 (1000)	4	5,73
10° High Drag Bombs	2400	375 Kts	750 (400)	450 (100)	2	2,7
20° Low Drag Bombs	5400	350 Kts	2050 (1700)	1350 (1000)	4	4,91
30° Dive Bombs	8400	350 Kts	3150 (2800)	1850 (1500)	4	5,67
45° High Angle Dive	14400	300 Kts	7550 (7200)	4850 (4500)	4	10,3
Low Angle STRAFE (Gun)	2500	400 Kts	n/a	850 (500)	n/a	n/a



Package	Callsign Pack 14028	Aircraft Type	UHF	VHF	IDM	TCN	Task
<input checked="" type="radio"/>	Falcon 1	4 F-16CM-52	6	#1	XMT 10	12Y	STRIKE
<input type="radio"/>	Fury 1	4 F-16CM-52	6	#2	XMT 20	13Y	STRIKE
<input type="radio"/>	Cowboy 1	4 F-16CM-52	6	#3	XMT 30	14Y	STRIKE
<input type="radio"/>	Lobo 1	4 F-16CM-52	6	#4	XMT 40	15Y	STRIKE
<input type="radio"/>	Panther 1	2 F-16CM-52	6	#5	XMT 50	16Y	AI

Page 2	DATACARD					
1265334	Callsign	Falcon 1	Package	14028	Mission	Range Day 140317

„Checking In“ AWACS

SICILY - ITALY									
BIRGI	025 X	200	110.95 (32R)	396.85	119.70	14 / 32 L / R	50	N 37° 48.355' E 12° 45.370'	
SIGONELLA	053 X	200	108.15 (10R)	337.60	118.05	10 / 28 L / R	80	N 37° 18.719' E 15° 33.371'	

Ground KI U-15: 396.850

Ground Human U-16: 318.100

Tower U-17: 359.300

SIGONELLA AB U-18: Anmeldung Kontrollzone - vor Einflug Target-Range: 337.600

Range-Control U-19: 243.200

AWACS „Ghostwalker“: U-6 (349.000 – Default)