

Ist Glory Wings SAM-Race 2017

„Uppercut of Doom“ In Erinnerung an Colonel A. „Jaws“ S.



* 13.11.1963
† 09.05.2014

Weather Briefing

SAM-Race - Callsign Falcon1

Target

SA 011855LT 360/10KT BLU 18/ 8 Q1009
BCMG 0120/0121 RED RA =

FC 011855LT 0118/0206 360/10KT BLU
BCMG 0120/0121 RED RA
BCMG 0120/0121 RED RA

Departure

LIPA / AVB - Aviano

SA LIPA 011855LT 360/10KT BLU 18/ 8 Q1009
BCMG 0120/0121 WHT RA =

FC LIPA 011855LT 0118/0206 360/10KT BLU
BCMG 0120/0121 WHT RA
BCMG 0120/0121 WHT RA

Alternate

LIPI / AFB - Rivolto

SA LIPI 011855LT 360/10KT BLU 18/ 8 Q1009
BCMG 0120/0121 WHT RA =

FC LIPI 011855LT 0118/0206 360/10KT BLU
BCMG 0120/0121 WHT RA
BCMG 0120/0121 WHT RA

Extended around departure

LIDA / --- - Asiago

SA LIDA 011855LT 360/10KT BLU 18/ 8 Q1009
BCMG 0120/0121 RED RA =

FC LIDA 011855LT 0118/0206 360/10KT BLU
BCMG 0120/0121 RED RA
BCMG 0120/0121 RED RA

LIPT / VIC - Vicenza

SA LIPT 011855LT 360/10KT BLU 18/ 8 Q1009
BCMG 0120/0121 WHT RA =

FC LIPT 011855LT 0118/0206 360/10KT BLU
BCMG 0120/0121 WHT RA
BCMG 0120/0121 WHT RA

LIDR / RAN - Ravenna

SA LIDR 011855LT 360/10KT BLU 18/ 8 Q1009
BCMG 0120/0121 WHT RA =

FC LIDR 011855LT 0118/0206 360/10KT BLU
BCMG 0120/0121 WHT RA
BCMG 0120/0121 WHT RA

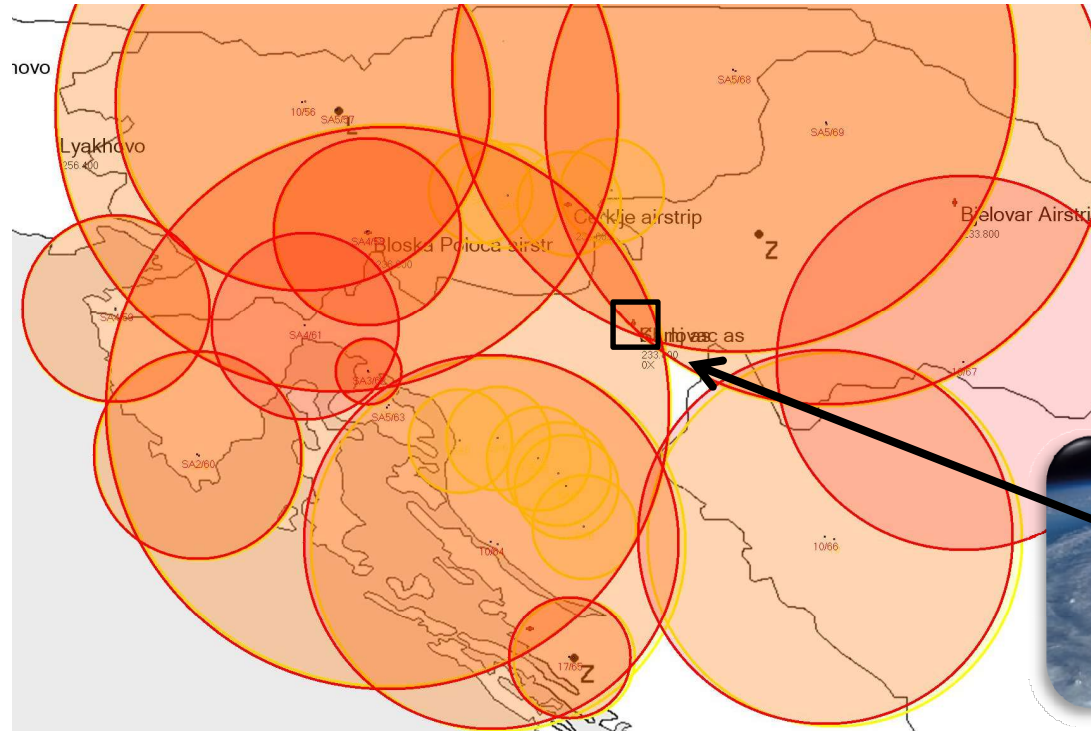
LIDT / ZIA - Mattarello

SA LIDT 011855LT 360/10KT BLU 18/ 8 Q1009
BCMG 0120/0121 GRN RA =

FC LIDT 011855LT 0118/0206 360/10KT BLU
BCMG 0120/0121 GRN RA
BCMG 0120/0121 GRN RA

LIPC / AFB - Cervia

SA LIPC 011855LT 360/10KT BLU 18/ 8 Q1009
BCMG 0120/0121 WHT RA =



KARLOVAC (Strip)	034 X (PLESO) R-234 33DME	—	136.00	18/36	520	N 44° 41.382' E 16° 57.374'
------------------	---------------------------	---	--------	-------	-----	-----------------------------



Camel1/29Y
18:46 - 23:54

ATIS Military LIPA INFO: B 011855LT ILS RWY03 TRL75 360/10KT BLU 18/8 Q1009 BCMG 0120/0121 WHT RA

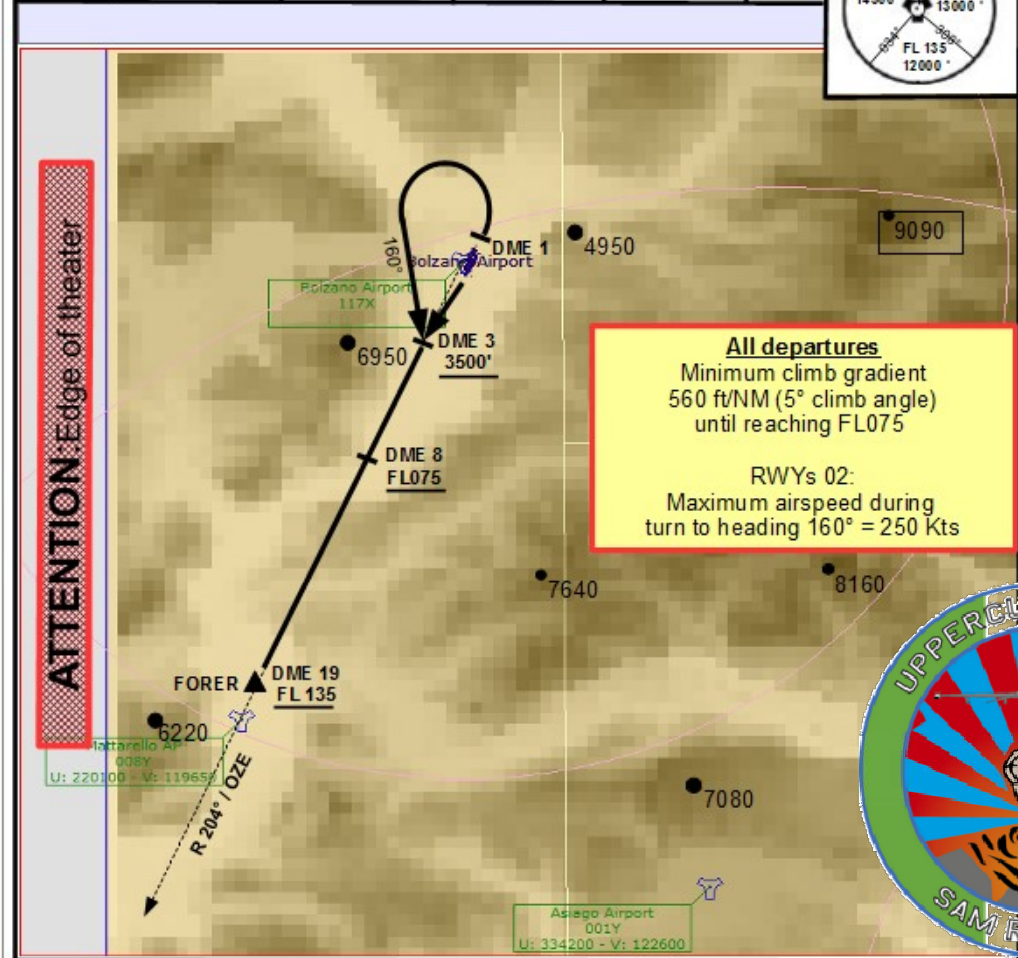
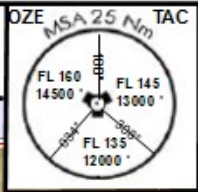
Airbase	DEP	ARR	ALTN	Airbase	TCN	UHF	VHF	Elv	RWY	ILS
	Aviano	Bolzano	Rivolto		111 X	284.65	142.05	340	03	109.50
					117 X		120.60	784	02R	---
					37 X	242.47	139.25	170	08	---

INITIAL CLIMBOUT
RWY 02 / 20 (both L&R)

BALKAN NAVIGATION VOLUME
Date: Aug 28 2016

BOLZANO (LIPB)
BOZEN ITALY

TAC 117X	TWR - 120.60	TRANS LEVEL: FL 040	TRANS ALT: 4000 ft	GPS: N45°38.863' E011°23.665'	Elev 770 ft
-------------	--------------------	------------------------	-----------------------	-------------------------------------	----------------



INITIAL CLIMB PROCEDURES

Due to obstacles and high terrain in the vicinity of the airport, take offs from RWY 02 L/R and RWY 20 L/R must be performed under visual conditions only until reaching R 204°/3 DME OZE TACAN at minimum 3500 ft. Then follow R204° towards FORER (DME 19)
 - ceiling: 3500 ft MSL (2700 ft AGL)
 - visibility: 5 km
 RWYs 02: make left climbing turn latest at DME 1/ OZE to a heading of 160° until intercepting R204°OZE
 RWYs 20: make a slight right turn to intercept and stabilize on R204° latest at DME 3

INITIAL CLIMBOUT RWY 02 / 20 (both L&R)

BOLZANO (LIPB)
BOZEN ITALY

NOT FOR REAL NAVIGATION

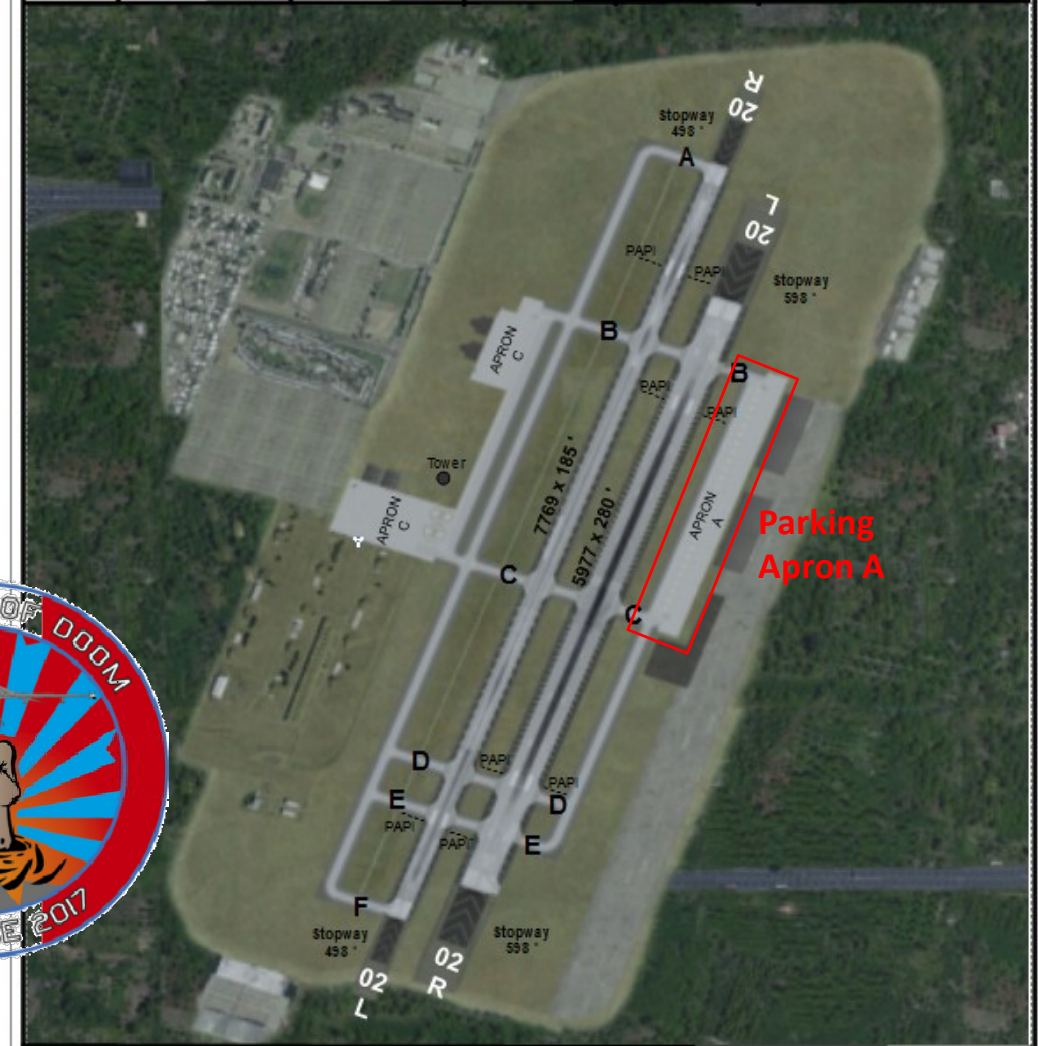
Created for 1st GW by SPARROW

AIRPORT DIAGRAM

BALKAN NAVIGATION VOLUME
Date: Aug 28 2016

BOLZANO (LIPB)
BOZEN ITALY

TAC 117X	TWR - 120.60	TRANS LEVEL: FL 040	TRANS ALT: 4000 ft	GPS: N45°38.863' E011°23.665'	Elev 770 ft
-------------	--------------------	------------------------	-----------------------	-------------------------------------	----------------



ADDITIONAL RUNWAY INFORMATION

RWY	TORA (FT)	LDA (FT)	ALS	VISUAL AID
02 L	7,769	7,769	(A1*) ALSF-1	PAPI - L/R
20 R	7,769	7,769	(A1*) ALSF-1	PAPI - L/R
02 R	5,977	5,977	(A1*) ALSF-1	PAPI - L/R
20 L	5,977	5,977	(A3*) SSALR	PAPI - L/R

AIRPORT DIAGRAM

BOLZANO (LIPB)
BOZEN ITALY

NOT FOR REAL NAVIGATION

Created for 1st GW by SPARROW