



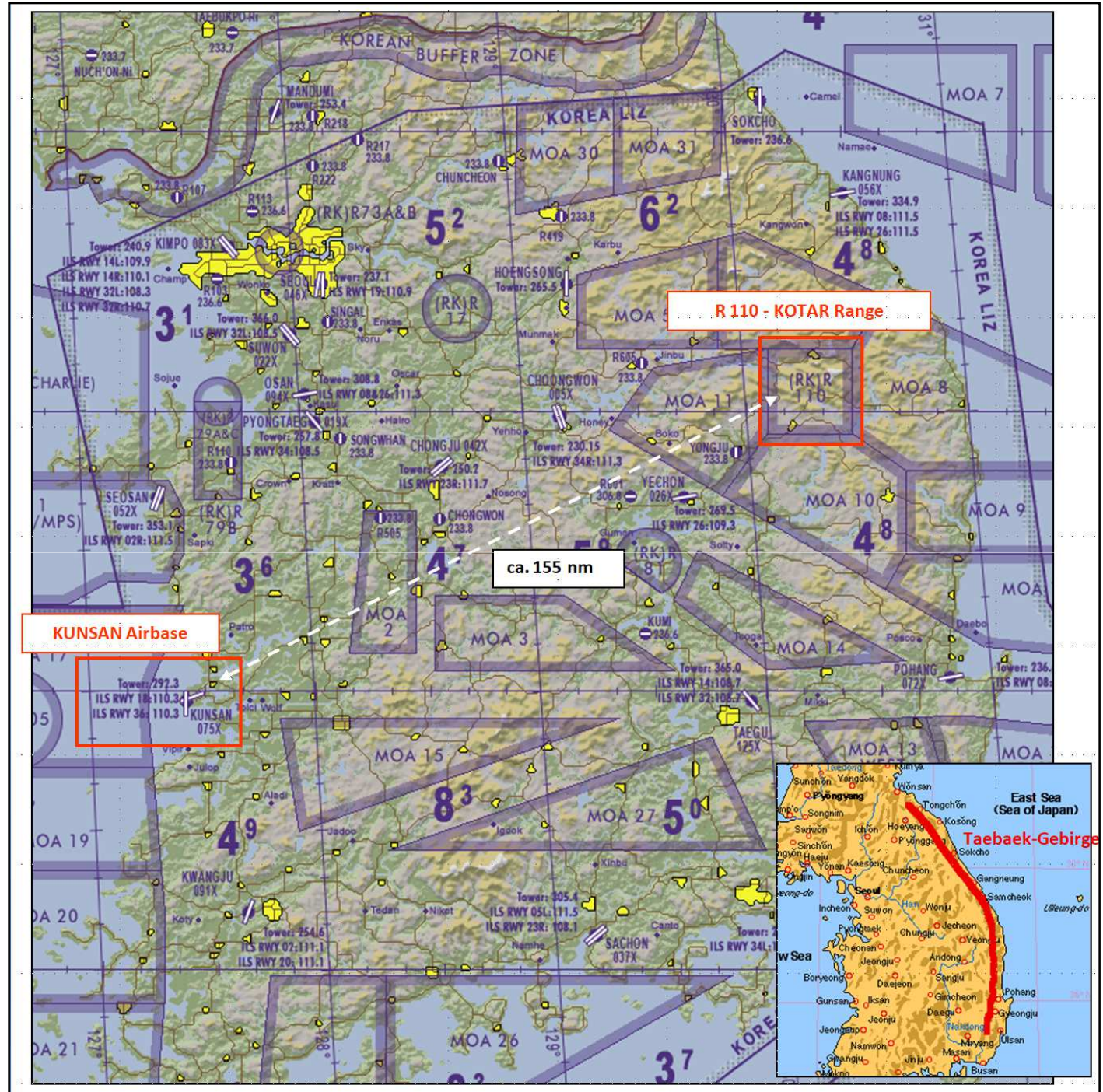
Briefing KOTAR

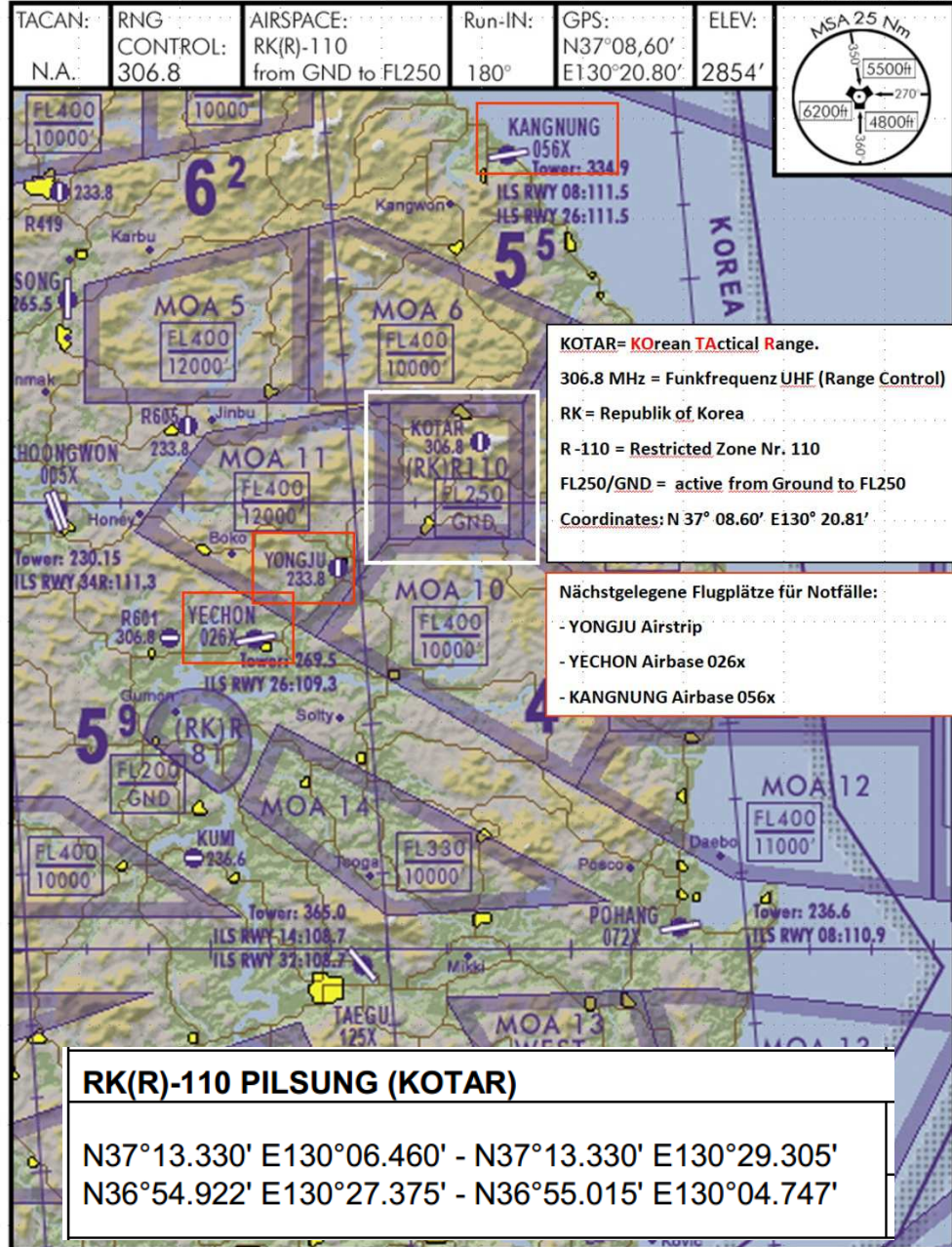
Geographische Lage

Ca. 40 nm südlich der Stadt KANGNUG befindet sich die „Korea Tactical Range“. Dieser „Luftwaffenschießplatz“ (Firing Range) liegt im Taebaek-Gebirge, welches sich über 500 km in Nord-Süd-Richtung parallel zur Ostküste erstreckt und somit den Hauptgebirgszug der Koreanischen Halbinsel bildet.

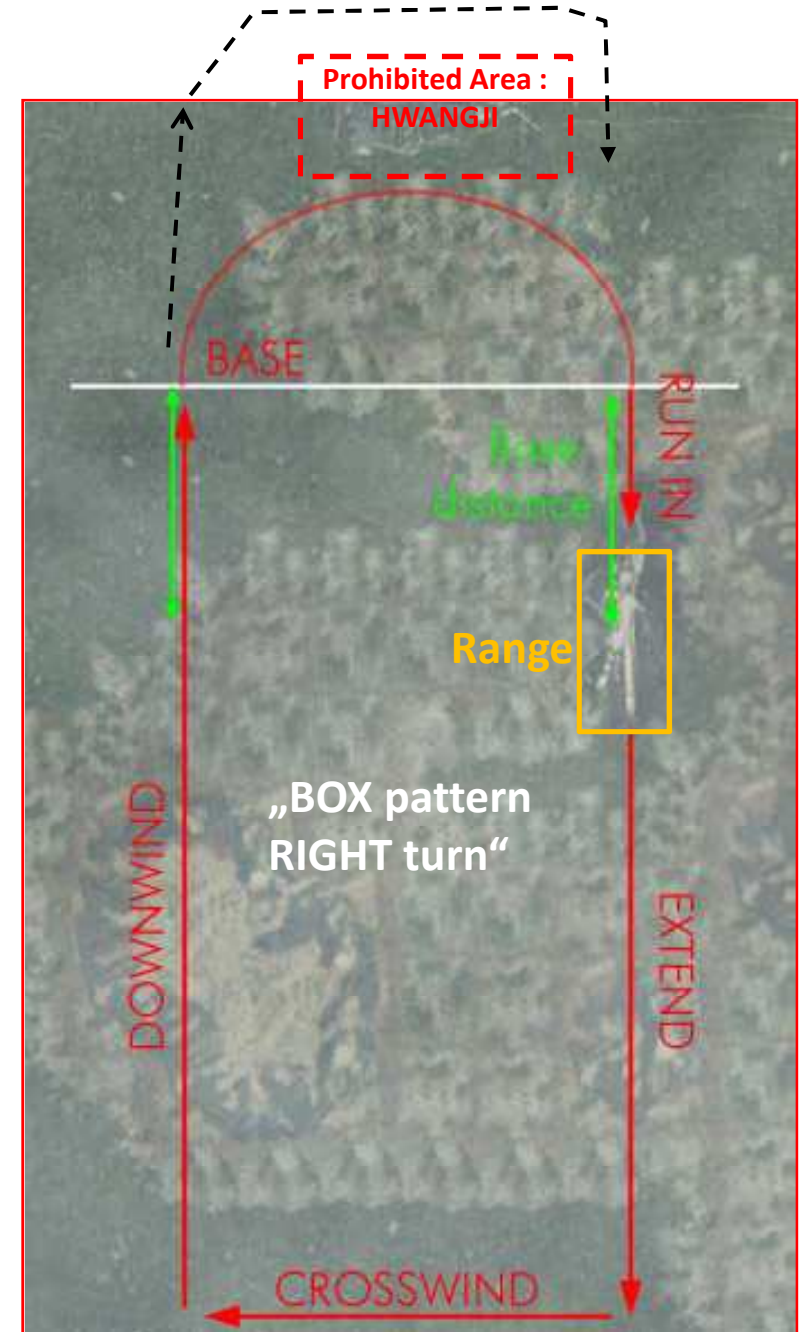
Die Military Operation Area (MOA) 5, 6, 8-12 sowie die „Restricted Area R-110“ (KOTAR) bilden das größte zusammenhängende Übungsgelände in Südkorea. Ob Tieffliegerangriffe (gun-strafting), der Einsatz von Laser- oder GPS-geführten Bomben (LGB, GPS bombs), Allzweckbomben (GP Bombs) oder auch die Anwendung von Luft-Boden-Raketen (Air to surface missiles), auf dieser Range können alle Arten von A-G-Einsätzen trainiert werden.

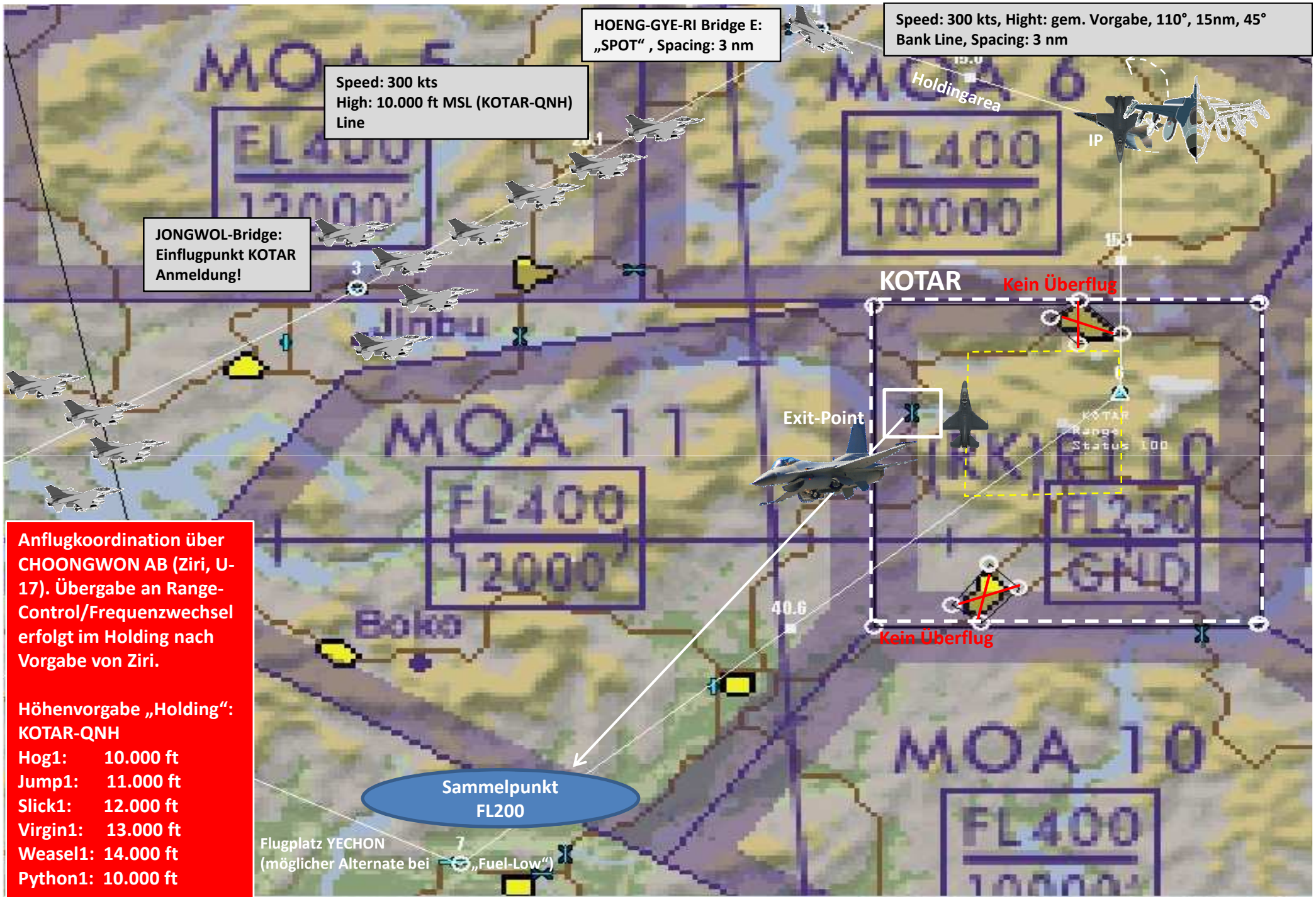
„Machen Sie sich mit den Sicherheitsauflagen vertraut, diese Area wird in den kommenden Monaten unsere zweite Heimat werden.“





Auch nördl. „Umgehung“ möglich!





HOENG-GYE-RI Bridge E:
„SPOT“, Spacing: 3 nm

Speed: 300 kts, High: gem. Vorgabe, 110°, 15nm, 45°
Bank Line, Spacing: 3 nm

Speed: 300 kts
High: 10.000 ft MSL (KOTAR-QNH)
Line

JONGWOL-Bridge:
Einflugpunkt KOTAR
Anmeldung!

KOTAR Kein Überflug

Exit-Point

Kein Überflug

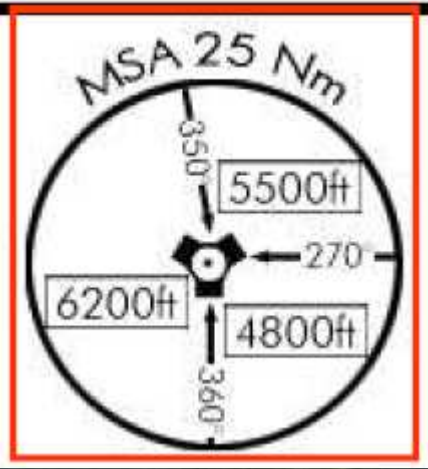
Anflugkoordination über
CHOONGWON AB (Ziri, U-
17). Übergabe an Range-
Control/Frequenzwechsel
erfolgt im Holding nach
Vorgabe von Ziri.

Höhenvorgabe „Holding“:
KOTAR-QNH

Hog1:	10.000 ft
Jump1:	11.000 ft
Slick1:	12.000 ft
Virgin1:	13.000 ft
Weasel1:	14.000 ft
Python1:	10.000 ft

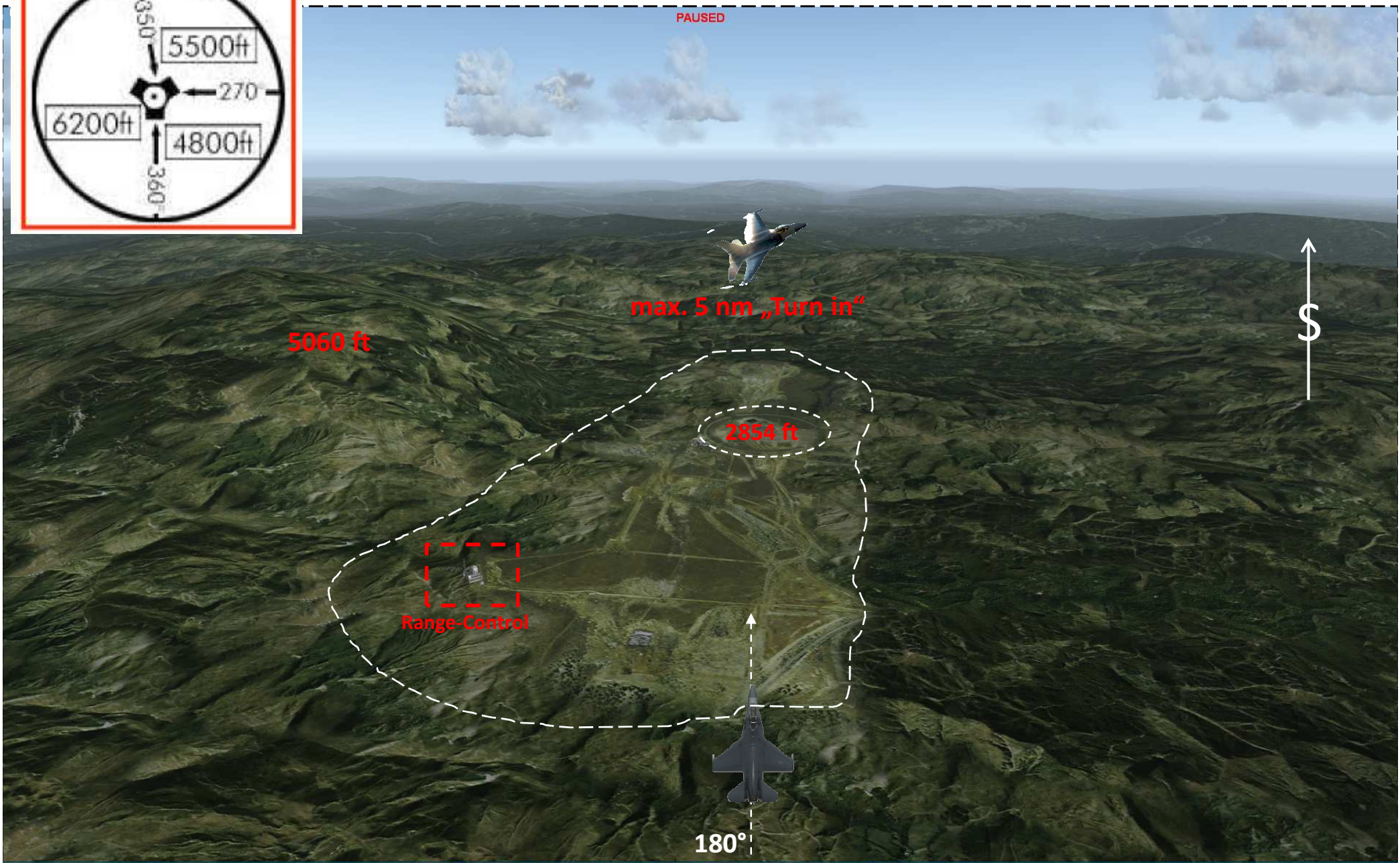
Sammelpunkt
FL200

Flugplatz YECHON
(möglicher Alternate bei „Fuel-Low“)



KOTAR

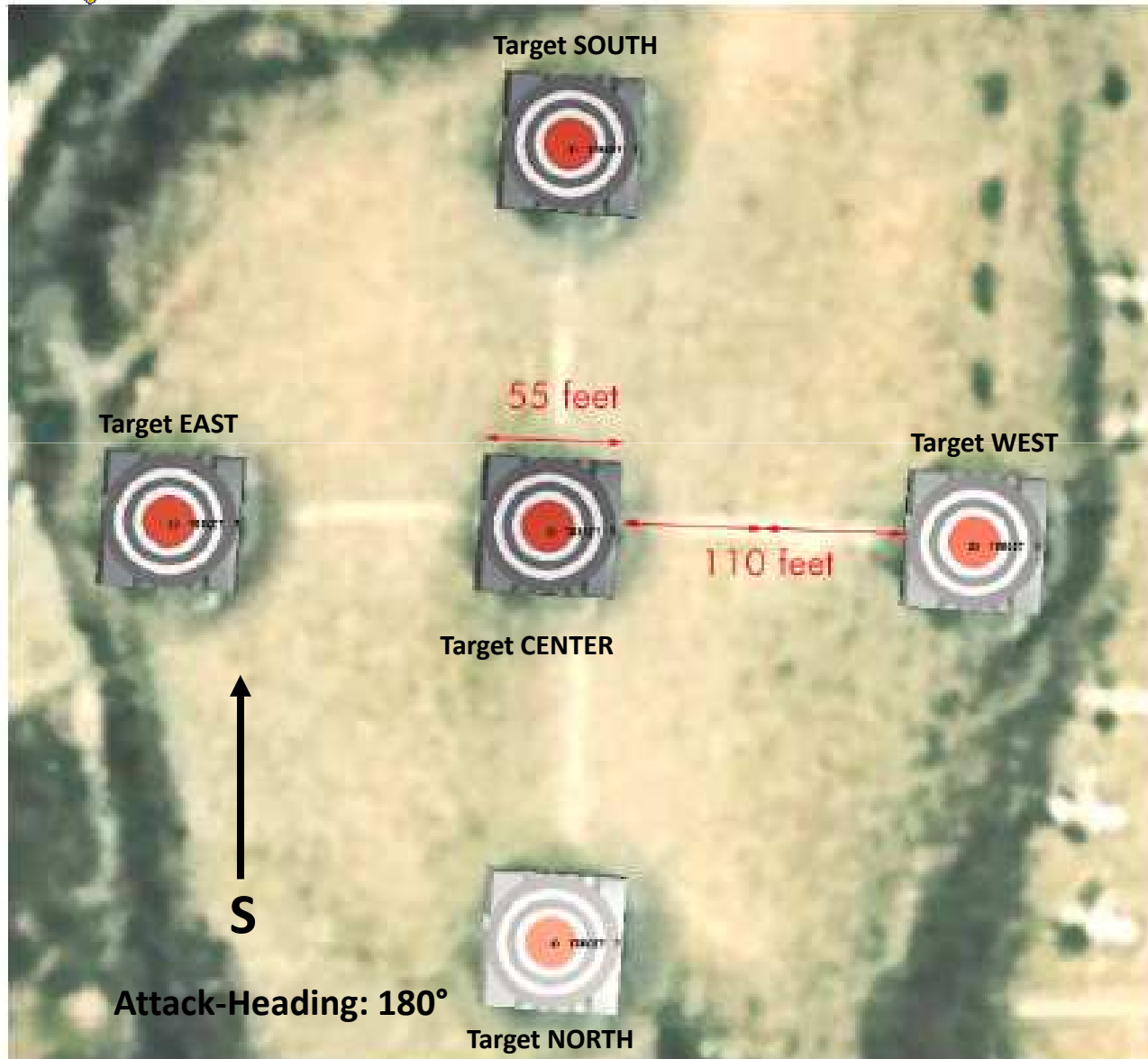
PAUSED





South GP Airpoints, large

„1st Run will be dry for all“



Target Assignment :

	2nd Run	3rd Run	4th Run	
Hog1:		A	N	
1.1	EAST	N	O	
1.2	WEST	N	T	
1.3	SOUTH	E	P	
1.4	-	X		
Jump1:		1		L
1.1	CENTER			
1.2	SOUTH			
1.3	NORTH			
1.4	EAST		A	
Slick1:		Weasel1:		
1.1	CENTER	1.1	SOUTH	
1.2	WEST	1.2	WEST	
1.3	SOUTH	1.3	EAST	
1.4	EAST	1.4	-	
Virgin1:		Python1:		
1.1	EAST	1.1	CENTER	
1.2	NORTH			
1.3	WEST	1.2	WEST	
1.4	SOUTH			

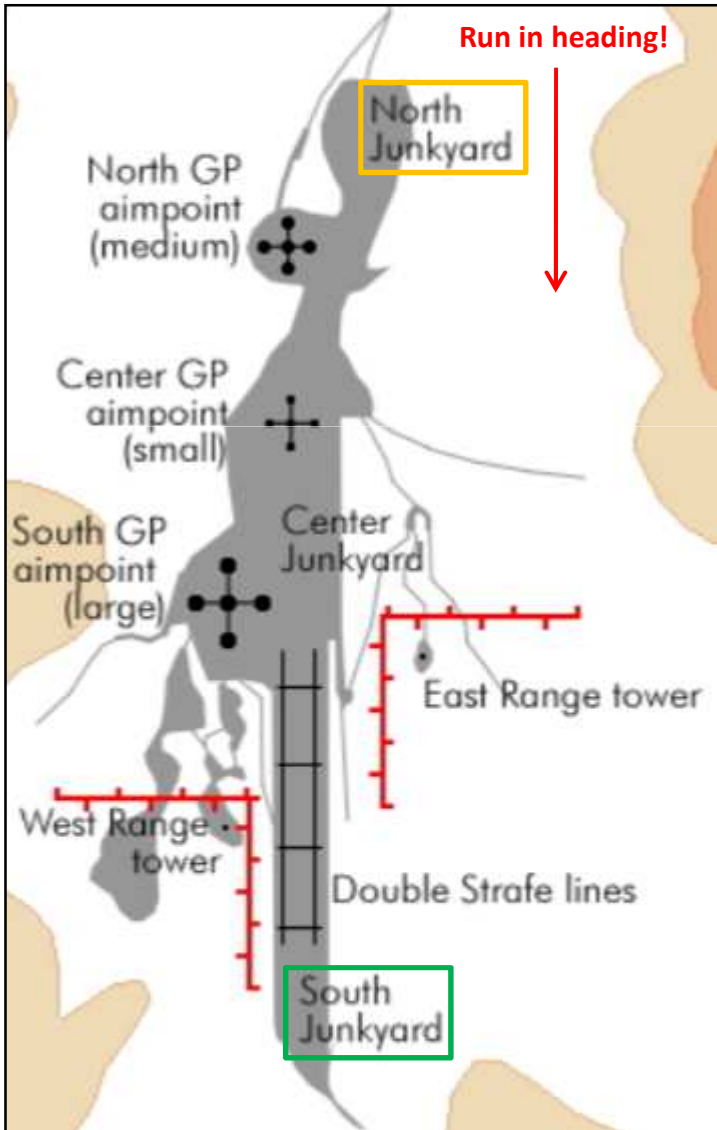


Range Occupancy

Achtung!

East Range Tower, West Range Tower und Radar&Admin Station sind mit Human besetzt!
Kein Waffeneinsatz auf diese Einrichtungen!

ANNEX 1



Weasel1: North	
1.1	#1
1.2	#3
1.3	#5
Python1: South	
1.1	#2
1.2	#5

Hog1: North

- 1.1 #1
- 1.2 #3
- 1.3 #5

Jump1: South

- 1.1 #1
- 1.2 #2
- 1.3 #4
- 1.4 #5

Slick1: North

- 1.1 #2
- 1.2 #4
- 1.3 #6
- 1.4 #8

Virgin1: South

- 1.1 #1
- 1.2 #3
- 1.3 #4
- 1.4 #5

Target Assignment : 3rd Run

North Junkyard:	
Mig-15 #1:	N37°08.651' - E130°20.790'
Mig-15 #2:	N37°08.651' - E130°20.866'
Mig-15 #3:	N37°08.627' - E130°20.829'
Mig-15 #4:	N37°08.605' - E130°20.781'
Mig-15 #5:	N37°08.579' - E130°20.806'
Mig-15 #6:	N37°08.603' - E130°20.844'
Mig-15 #7:	N37°08.575' - E130°20.827'
Mig-15 #8:	N37°08.551' - E130°20.796'

South Junkyard:	
M2A3 #1:	N37°07.746' - E130°20.624'
M2A3 #2:	N37°07.732' - E130°20.621'
M2A3 #3:	N37°07.717' - E130°20.631'
M2A3 #4:	N37°07.738' - E130°20.650'
M2A3 #5:	N37°07.715' - E130°20.668'



KOTAR WEAPON EVENT COMPARISON CHART

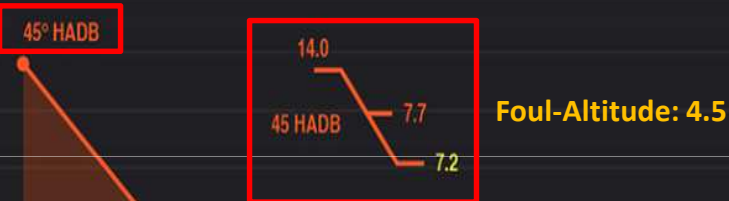
Stack-View

KOTAR = 2854 ft MSL

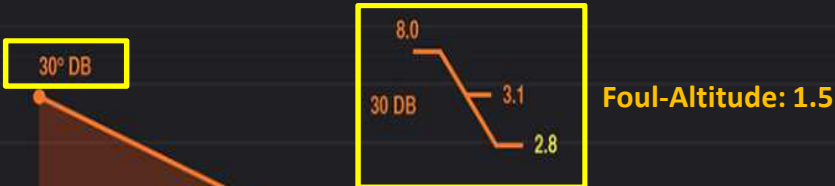
Release-Airspeed: 450 kts!



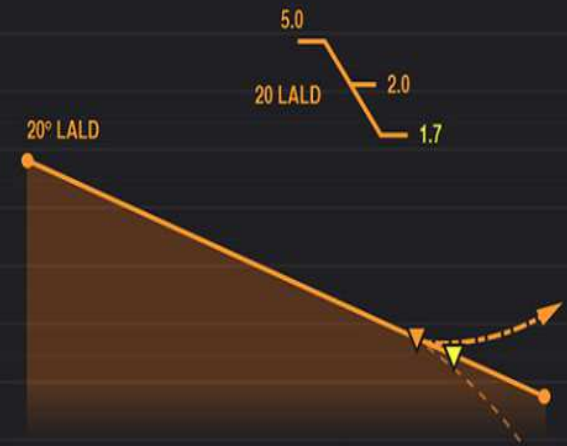
14.000 ft Abwurfhöhe
= 16.840 ft KOTAR-QNH, 300 kts (Base Speed)



8.000 ft Abwurfhöhe
= 10.840 ft KOTAR-QNH, 350 kts, (Base Speed)



It is VERY good practice so set MSL ALLOW at event MRA. Doing so will give the pilot a Betty call when reaching MRA and hearing this the pilot should immediately starts his climbing safe escape manoeuvre to avoid flying lower than foul altitude.



Event	Base Alt in thousand of feet	Base Distance	Base Airspeed	PRA (Planned Release Alt.)	MRA (Min Release Alt.)	Rel Airspeed	% BFL (Bomb Fall line)	Fuse Arm	Bomb TOF (time of Flight)	Foul altitude
	AGL (MSL)	Nm	(Kcas)	AGL (MSL)	AGL (MSL)	(Kcas)				AGL (MSL)
10° LALD	3.0 (5.8)	2.3	375	1.5 (4.3)	1.3 (4.1)	450	55	4.58	5.73	1.0 (3.8)
10° LAHD	2.0 (4.8)	1.8	375	0.6 (3.1)	0.4 (3.2)	450	25	3.11	2.7	0.1 (2.9)
20° LALD	5.0 (7.8)	2.1	350	2.0 (4.8)	1.7 (4.5)	450	39	4.58	4.91	1.0 (3.8)
30° DB	8.0 (10.8)	2.07	350	3.1 (5.9)	2.8 (5.6)	450	39	4.58	5.67	1.5 (4.3)
45° HADB	14.0 (16.8)	2.2	300	7.7 (10.5)	7.2 (10)	450	51	4.58	10.3	4.5 (6.3)
45° HARB	20.6 (23.4)	2.7	300	14.2 (17)	13.0 (15.8)	0.85/415	80	4.58	17.3	10.0 (12.8)
Low angle Strafe	2.1 (4.9)	2.0	400	-	-	450	-	-	-	0.5 (3.3)

Flying an event is simply flying the pattern applying the above parameters. The most important point is the Base turn and the above settings let you know where you should be when turning base. As said before, the trick is to turn Base at the right moment.

Do not allow any error on base, if you are outside parameters, simply declare a dry pass and overfly the target at the Base altitude, keeping your place in the pattern.

- Base Altitude is the altitude where you should be before turning base. It's in thousands of feet and be aware it is AGL, the range is 2854 feet elevation, so a base Alt of 3.0 is actually $3000 + 2854 = 5854$ feet. In the table above, the first altitude is AGL, the second one takes Kotar elevation into account (MSL) remember to be on Kotar local altimeter setting.
- Base distance is the horizontal range from the target where you should start to turn base. As seen above, the best way to gauge that distance is visually but you can also trick the system by using the CCRP base distance to target. Make sure the steerpoint of interest is the target, select CCRP and check base distance to target in the HUD given in the bottom right of the HUD.

Absicht/Auftrag

Im Rahmen der Einführungsausbildung „KOREA“ führen Kräfte der 1st GW einen Einsatz „HADB“ auf der KOTAR durch. Absicht ist es, die Zusammenarbeit mit der Sicherheitsorganisation zu schulen und den gezielten Bombenabwurf „High Altitude Dive Bombing“ zu auszubilden.

Als Station 2 des Ausbildungstages ist die Wiederholung des Luftkampfmanöver „Standard“ gegen MiG-21/23/29A geplant. Dieser Part soll gem. gedachtem Verlauf in den MOA's 9/10/12 stattfinden.

RAHMENDATEN

F-16CM-52

TO: KIMPO AB, 13:00LT

ARR: KIMPO AB, 14:30:LT

Alternate: OSAN

Flight Distance approx. 500 nm, Mission Duration approx. 90 min.

Flights: Hog1, Jump1, Slick1, Virgin1

Weather-Forecast Korean Peninsula:

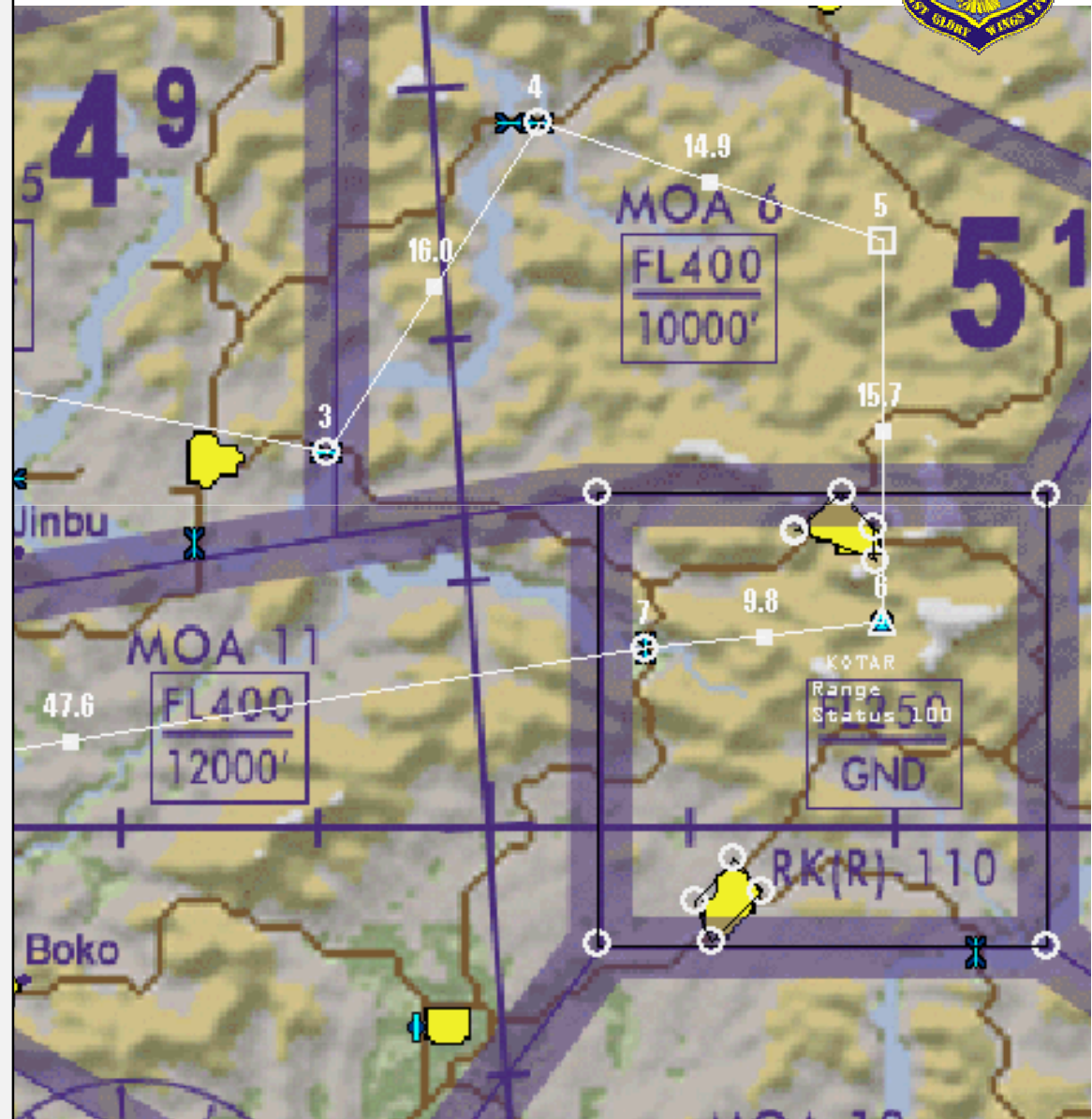
sunny, Wind 160°, 10 kts, Temp: 12° C, Sunset: 19:20LT/Aviation-Night +30 min

Flugweg

WP1: KIMPO
WP2: ENKAS
WP3: YONGWOL Bridge (IAF-KOTAR)
WP4: HOENG-GYE-RI Bridge E: „SPOT“, Entrance Holding
WP5: IP RANGE, Beginn Attack
WP6: KOTAR
WP7: SANGDONG Bridge = Exit Point KOTAR
WP8: CHOONGWON
WP9: Zugewiesene MOA zum Part „Standardmanöver“!

„Call CHOONGWON Air Base early for the numbers!“

ORDER OF EVENTS: „KOTAR – OPS - January 30, 2018



-KOTAR -OPS-

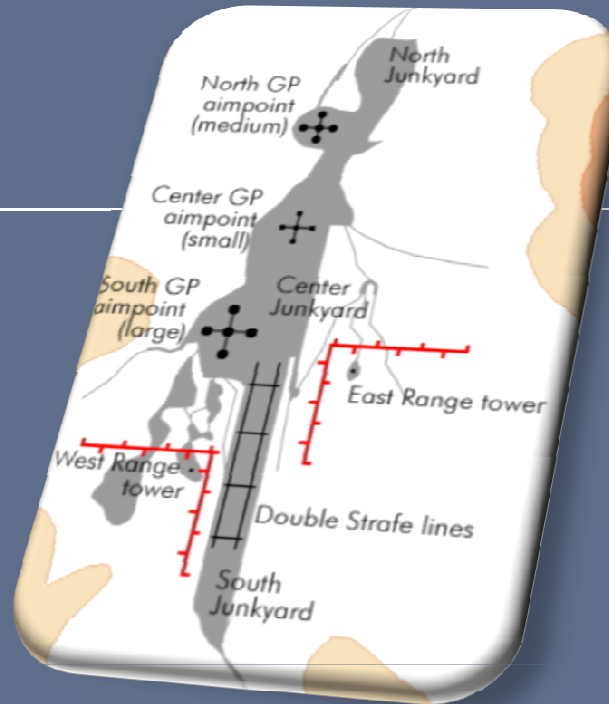


ROSTER

Hog1: BadCrow, Bluebird, **Sparrow**
Jump1: Dro16, Freelancer, Caruso, Yankee
Slick1: Caesar, Hunter, Paladin, Opasi
Virgin1: Stingray, Slick, Keule, Frosty
Weasel1: Sneakpeek, Cupra, Joker

Python1: TheWitch, Ghostrider

KIMPO Tower, „Skywalker“ (AWACS) and CHOONGWON AB:
KIMPO Ground and KOTAR-Range Control:



January 30, 2018



Package 4958 „Strike“

by Maj Ziri
by Maj Sparrow