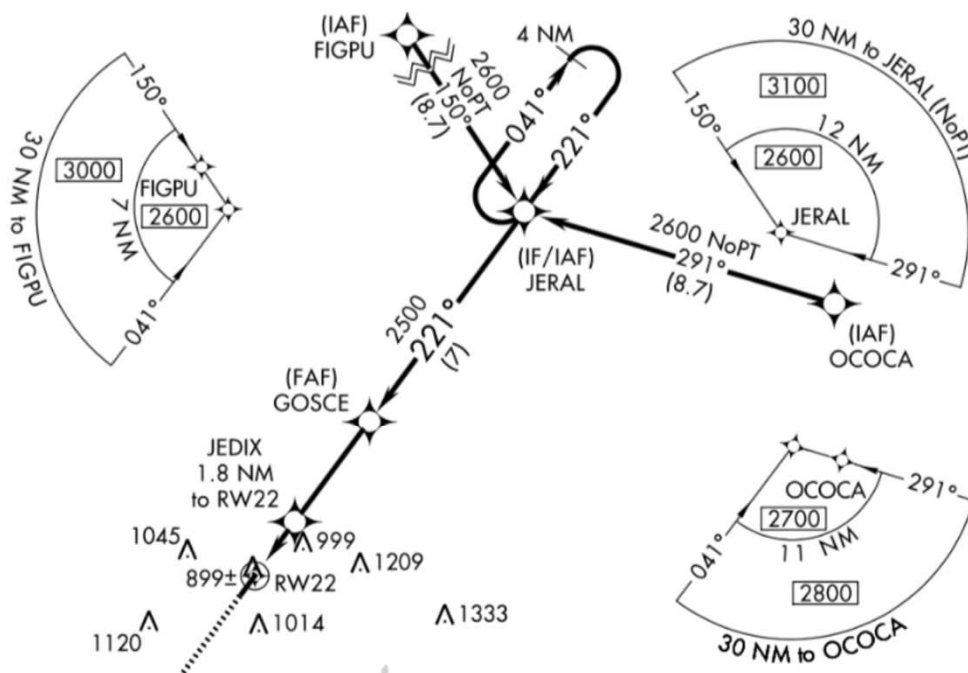
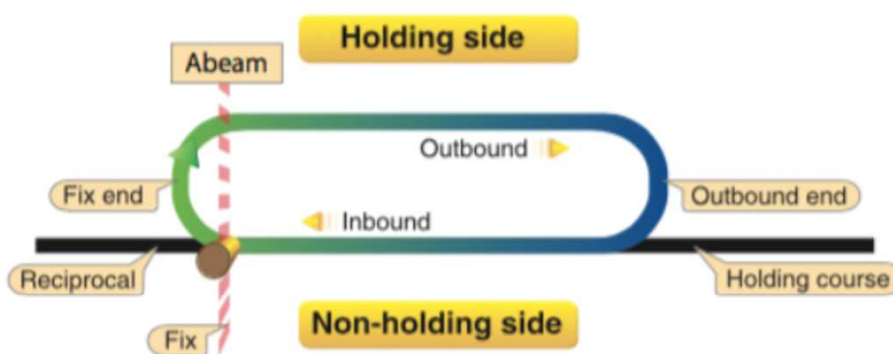


When flying direct to JERAL from the south, what should you do after passing JERAL?



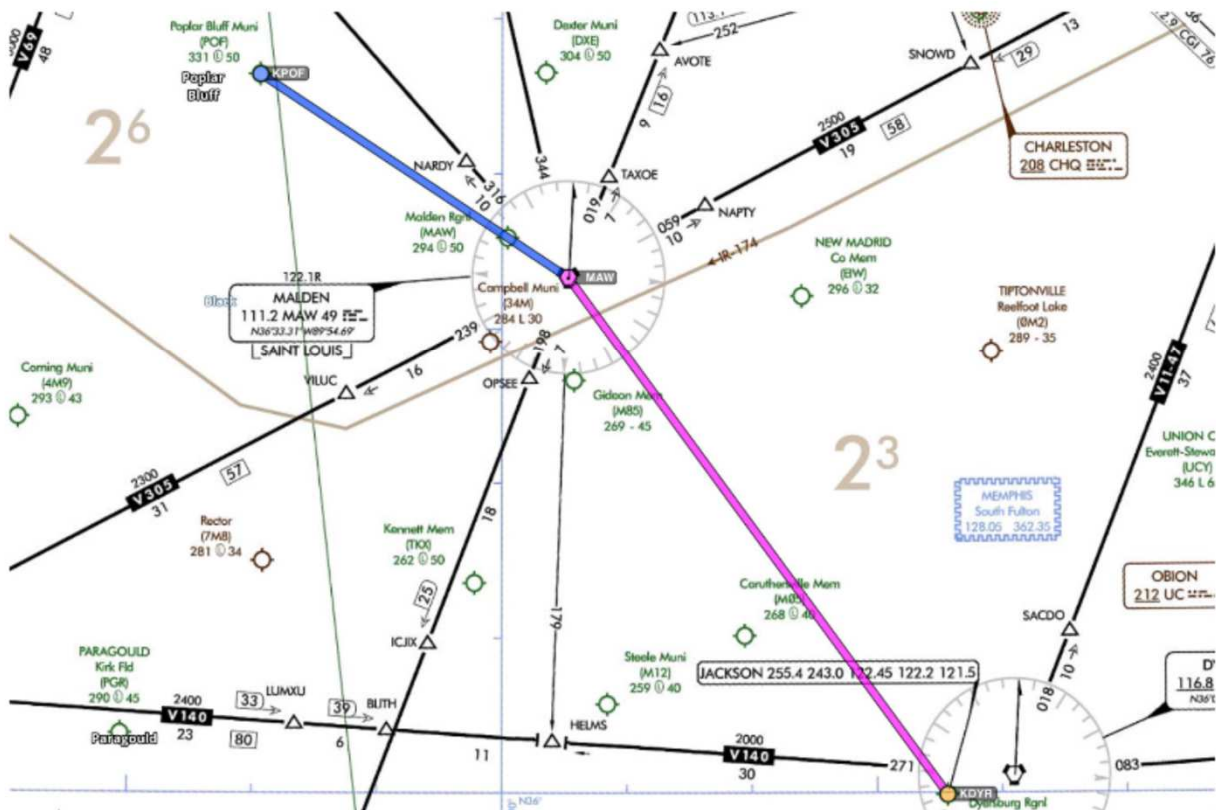
- Fly a teardrop entry, then proceed inbound on the approach after passing JERAL.
- Fly a teardrop entry, then fly a 4nm holding pattern before proceeding inbound.
- Flying direct to JERAL from the south is not approved.

When should you begin timing the outbound leg on your first turn in a hold?



- When you are abeam the holding fix.
- As soon as you roll out of the turn on the outbound heading.
- When you begin the turn after passing the holding fix.

On your flight from KDYR to KPOF, ATC clears you to "hold east of MAW on the 090 radial, right turns, 5 mile legs." How should you enter the hold?

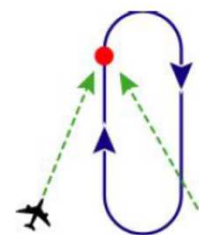


Direct entry.

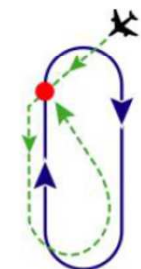
Teardrop entry.

Parallel entry.

A **direct entry** is performed exactly as it sounds: the aircraft flies directly to the holding fix, and immediately begins the first turn outbound.



In a **parallel entry**, the aircraft flies to the holding fix, parallels the inbound course for one minute outbound, and then turns back, flies directly to the fix, and continues in the hold from there.



In an **offset** or **teardrop entry**, the aircraft flies to the holding fix, turns into the protected area, flies for one minute, and then turns back inbound, proceeds to the fix and continues from there.

