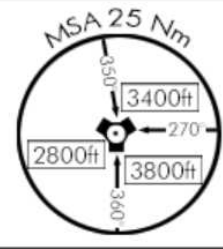


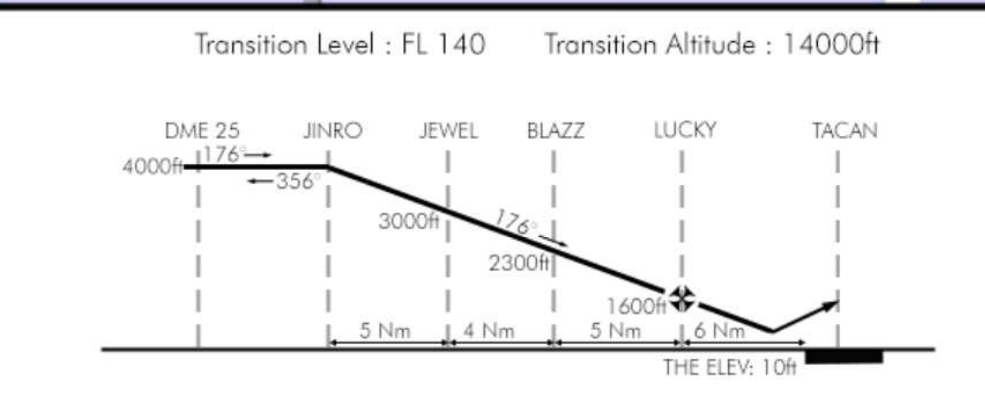
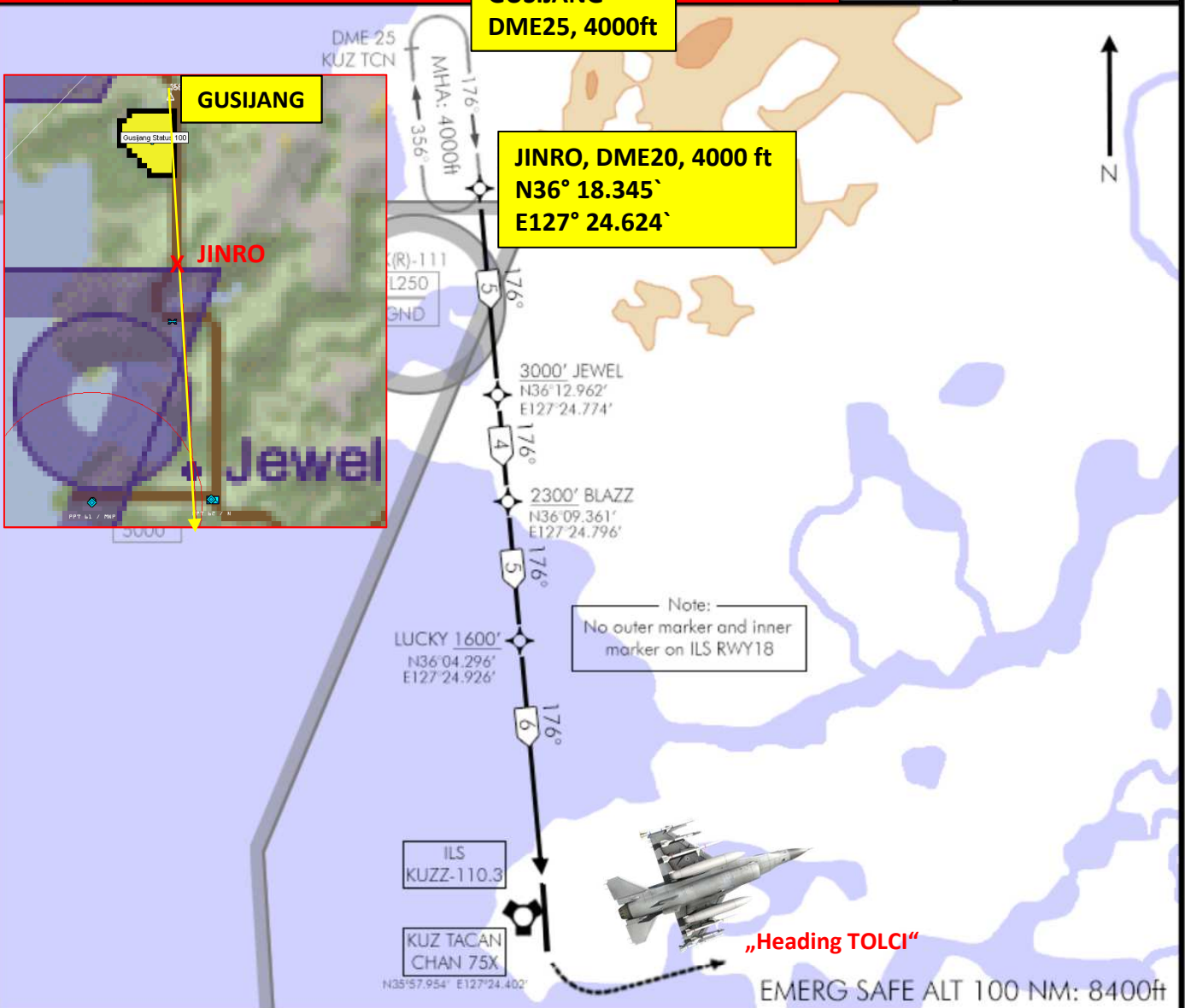
RADAR RWY 18

Date: 09 Nov 18

TCN:	ATIS:	APP/DEP:	TWR:	NPAR DA(H):	FINAL:	GPS:	ELEV:
75X	120.225	292.65	292.3	310'(300')	176°	N35°57.554' E127°24.492'	10'



MISSED APPROACH: Climb runway heading. Reaching 2000ft turn LEFT climbing to 5000 direct TOLCI. Contact Approach for resequencing to JINRO.



MINIMA:
N-PAR: 310'(300'AGL) 400ft-800m*
Circling: N.A.
*When ALS inop, increase vis to 1200m