



KUNSAN Air Base/Republic of Korea  
HQ 1st Glory Wings  
-Commanding Officer-



## Flight-Training 2019-08-13

### ROSTER

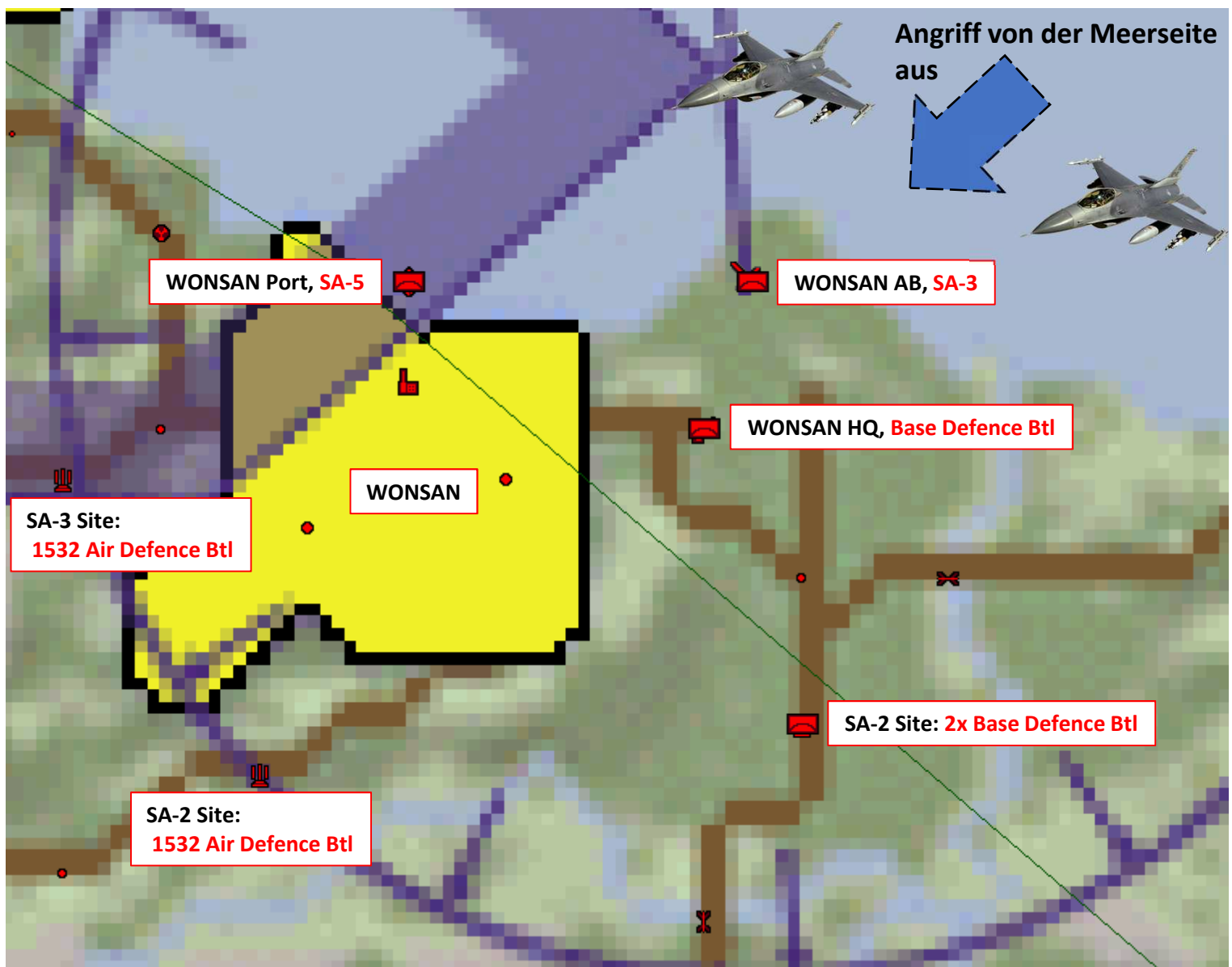
#### Package1

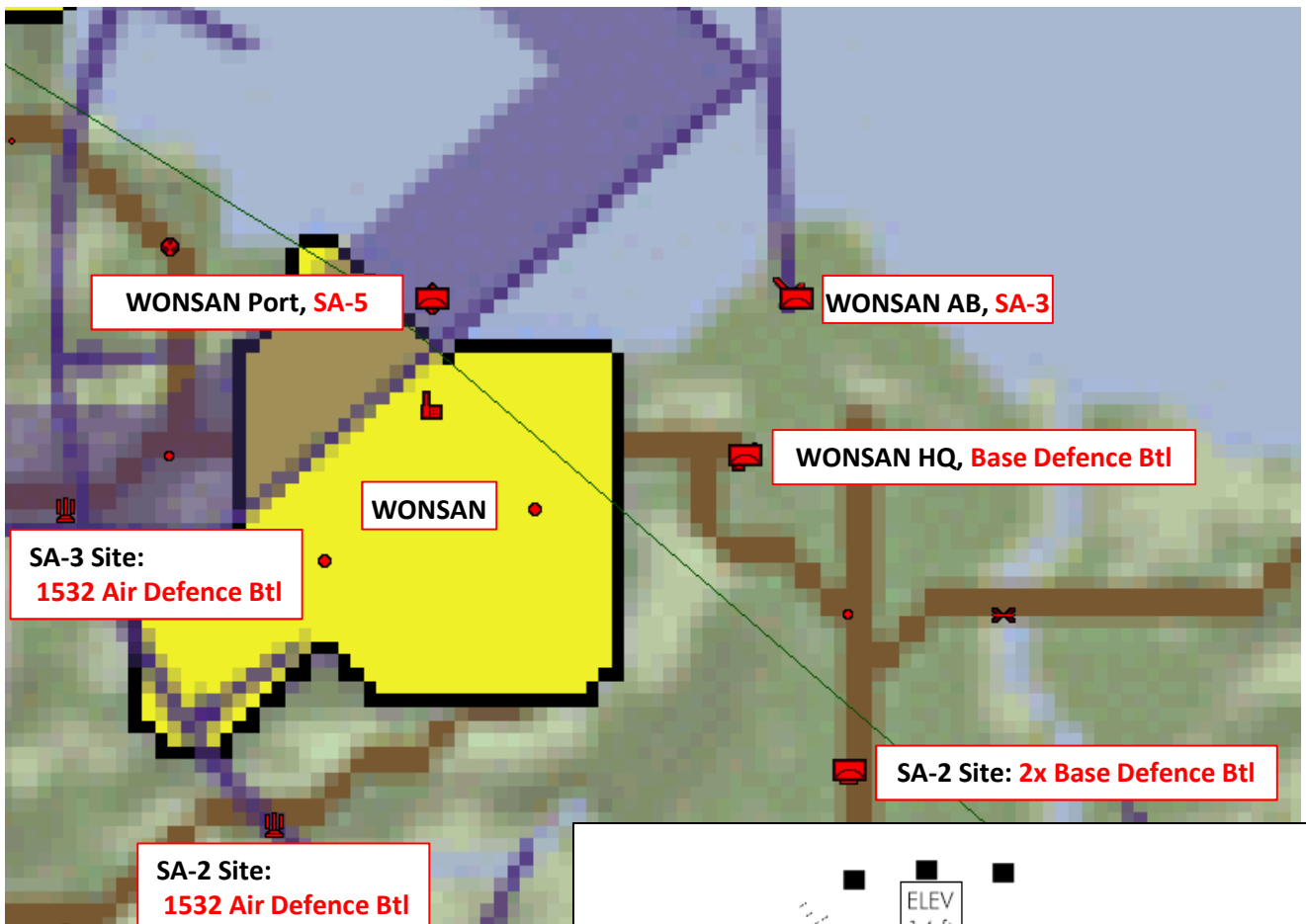
- Flight1 (DEAD) : BadCrow, Dagger
- Flight2 (Strike1) : Yankee, Bluebird, Cupra
- Flight3 (Strike2) : Joker, Opasi, TheWitch
- Flight4 (DEAD) : Sneakpeek, Anvil
- Flight5 (Strike1) : Dro16, Nic, Hunter

#### Package2

- Flight1 (Strike1) : **Paladin, Toschi**
- Flight2 (Strike2) : **Keule, Slick**

Im Zuge der Vorbereitung auf eine Operation, welche im Rahmen von „Giants Causeway“ durchgeführt wird, wurden die Örtlichkeiten/Gegebenheiten das kommenden „Angriffszieles“ 1:1 in die Area „WONSAN“ übertragen! 1st GW schaltet zunächst die SAM-Sicherung aus und greift dann die Base mittels Abstandswaffen an. Zum Einsatz sollen AGM-154A u. AGM-158 JASSM kommen.





**AUFTRAG**

BadCrow/Dagger: SA-5, SA-3 WONSAN AB

Sneakpeek/Anvil: SA-2, SA-3 (SA-3 Site)

Bei „freier Kapazität“: Angriff auf das „DogEar“ der Defence Btl!

Yankee/Bluebird/Cupra: WONSAN HQ + Base Defence Btl

Dro16/Nic/Hunter: 2x Base Defence Btl, 1x SA-19 Btl (SA-2 Site)

Beide Flights: **AGM-154A**

Joker/Opasi/TheWitch: WONSAN AB - **AGM-158 JASSM**

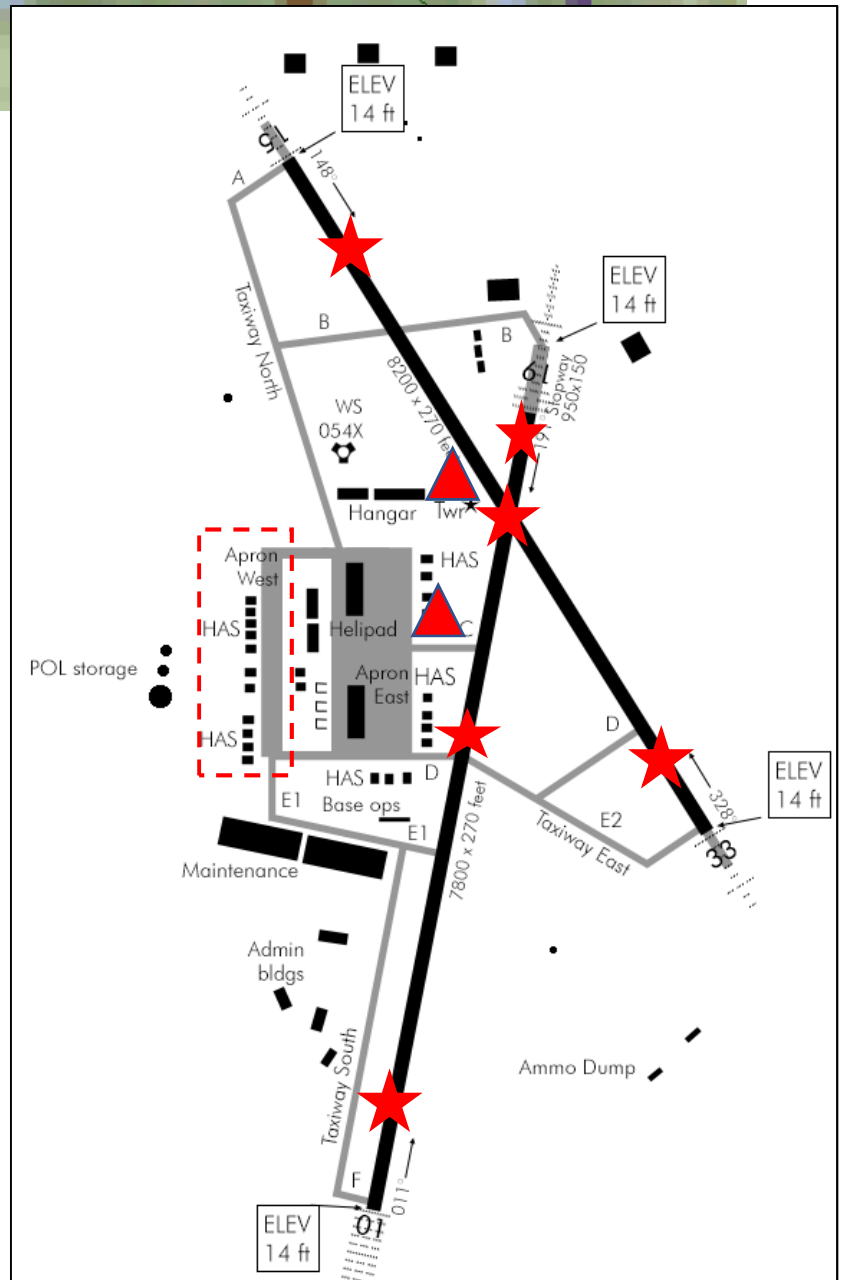
- Runways (2) mit jeweils drei Sektionen

Paladin/Toschi: **AGM-158 JASSM**

- Tower (2)  
- HAS OPFOR

Keule/Slick: **AGM-158 JASSM**

- HAS OPFOR



## COMM LADDER

### COMM LADDER:

### Package Restteile

AGENCY:	CALLSIGN:	UHF [GHNL]:	VHF [GHNL]:	NOTES:
INTRA-FLIGHT:	Mudhen1	--	139.075 MHz [17]	Flight Management Comms
GUARD:	None	243.000 MHz	121.500 MHz	Distress / Emergency
COMMON:	None	339.750 MHz [14]	123.500 MHz [14]	Advisory / UNICOM
BASE OPS:	None	240.500 MHz [1]	--	Homeplate Operations
CHECK-IN:	Chalice1	292.450 MHz [5]	--	AWACS: Global Check-In
TACTICAL:	Chalice1	335.275 MHz [6]	--	AWACS: Package Comms
DEP ATIS:	Sokcho ATIS	--	123.150 MHz	Departure Airbase
DEP GROUND:	Sokcho Ground	240.400 MHz [2]	--	Departure Airbase
DEP TOWER:	Sokcho Tower	236.600 MHz [3]	122.200 MHz [3]	Departure Airbase
DEP DEPARTURE:	Sokcho Departure	304.400 MHz [4]	--	Departure Airbase
ARR ATIS:	Kangnung ATIS	--	132.050 MHz	Recovery Airbase
ARR APPROACH:	Kangnung Approach	304.000 MHz [7]	--	Recovery Airbase
ARR TOWER:	Kangnung Tower	334.900 MHz [8]	126.200 MHz [4]	Recovery Airbase
ARR GROUND:	Kangnung Ground	275.800 MHz [9]	--	Recovery Airbase
ALT ATIS:	Sokcho ATIS	--	123.150 MHz	Alternate Airbase
ALT APPROACH:	Sokcho Approach	304.400 MHz [4]	--	Alternate Airbase
ALT TOWER:	Sokcho Tower	236.600 MHz [3]	122.200 MHz [3]	Alternate Airbase
ALT GROUND:	Sokcho Ground	240.400 MHz [2]	--	Alternate Airbase

### COMM LADDER:

### Package Keule, Slick, Paladin, Toschi

AGENCY:	CALLSIGN:	UHF [GHNL]:	VHF [GHNL]:	NOTES:
INTRA-FLIGHT:	Falcon1	--	143.550 MHz [15]	Flight Management Comms
GUARD:	None	243.000 MHz	121.500 MHz	Distress / Emergency
COMMON:	None	339.750 MHz [14]	123.500 MHz [14]	Advisory / UNICOM
BASE OPS:	None	240.500 MHz [1]	--	Homeplate Operations
CHECK-IN:	Chalice1	292.450 MHz [5]	--	AWACS: Global Check-In
TACTICAL:	Chalice1	290.600 MHz [6]	--	AWACS: Package Comms
DEP ATIS:	Sokcho ATIS	--	123.150 MHz	Departure Airbase
DEP GROUND:	Sokcho Ground	240.400 MHz [2]	--	Departure Airbase
DEP TOWER:	Sokcho Tower	236.600 MHz [3]	122.200 MHz [3]	Departure Airbase
DEP DEPARTURE:	Sokcho Departure	304.400 MHz [4]	--	Departure Airbase
ARR ATIS:	Kangnung ATIS	--	132.050 MHz	Recovery Airbase
ARR APPROACH:	Kangnung Approach	304.000 MHz [7]	--	Recovery Airbase
ARR TOWER:	Kangnung Tower	334.900 MHz [8]	126.200 MHz [4]	Recovery Airbase
ARR GROUND:	Kangnung Ground	275.800 MHz [9]	--	Recovery Airbase
ALT ATIS:	Sokcho ATIS	--	123.150 MHz	Alternate Airbase
ALT APPROACH:	Sokcho Approach	304.400 MHz [4]	--	Alternate Airbase
ALT TOWER:	Sokcho Tower	236.600 MHz [3]	122.200 MHz [3]	Alternate Airbase
ALT GROUND:	Sokcho Ground	240.400 MHz [2]	--	Alternate Airbase

#### TO

Falcon1, 1803LT: Paladin, Toschi  
Gamble1, 1804LT: Keule, Slick

#### Zeiten

DEAD am WP 4 (Sammelpunkt): 18:12:45  
DEAD 1. Schuss = 18:20

Warhawk1, 1800LT: BadCrow, Dagger  
Mudhen1, 1801LT: Sneakpeek, Anvil

Striker am WP5 (Sammelpunkt): 18:20  
Holding, Freigabe zum Einflug nachdem SA-5 „down“  
Angriff aus max. Range

Cyborg1, 1805LT: Yankee, Bluebird, Cupra  
Weasel1, 1806LT: Joker, Opasi, TheWitch  
Bulldog1, 1807LT: Dro16, Nic, Hunter