

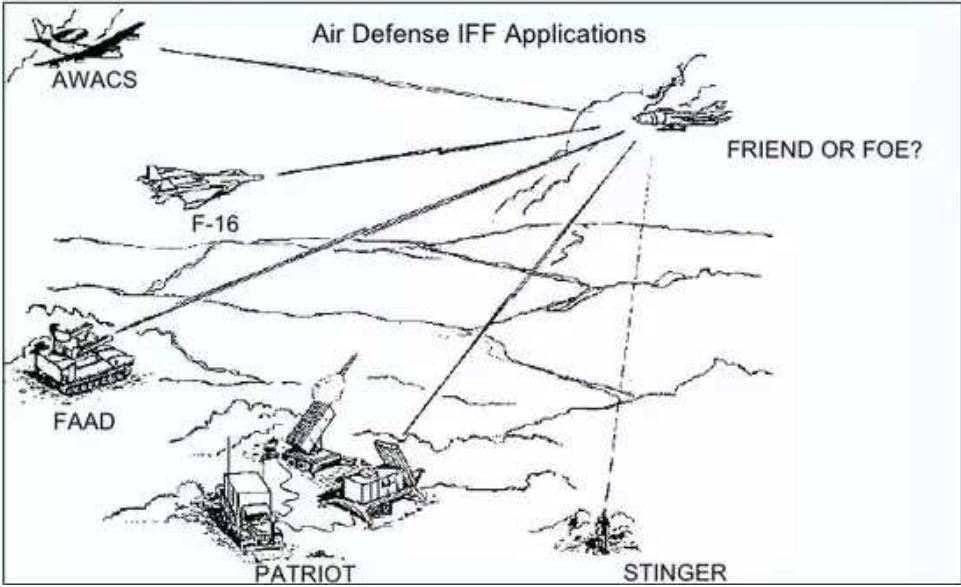


GEDACHTER VERLAUF

Flight-Training 10. September 2019

Schwerpunkt:

„Identify Friend or Foe (IFF)“



Kunsan Air Base

ACCEPT FOLLOW ON FORCES
TAKE THE FIGHT NORTH



1st Glory Wings
F-16CJ



ROSTER 10.09.2019

KUNSAN AFB (Package 1433 – SWEEP)

- 1. Gamble1: BadCrow, Bluebird, Anvil, Cupra (*TIMBER*)
- 2. Hawkeye1: Dro16, TheWitch, Yankee, Opasi
- 3. Plasma1: Hunter, Joker

SEOSAN AFB (Package 1413 - SWEEP)

- 1. Falcon1: Stingray, Keule

SEOSAN AFB (Package 2000 - SWEEP)

- 1. Warhawk1: **Slick, Nic, Toschi**

Rahmendaten

- Tagflug, F-16CM-52 - SWEEP
- TO: KUNSAN (PATRO), SEOSAN via KUNSAN
- ARR: OSAN AFB via OSCAR
- Weather-Forecast: Fair, NOSIG
- SP: Anwendung „IFF“, Luftkampf gegen MiG-19/21, Klasse A2A gegen Su-34/35/MiG-21
- Einsatz als 2/4-ship
- 4x AIM-120C
- 2x AIM-9X
- 2-foxaer
- AWACS on air
- Zwei Tanker (KC-10) on air
- AN/ALQ-184, TGP
- Gegner im Status „ace“, worst case

Notes

Kunsan Air Base DEFEND THE BASE
ACCEPT FOLLOW ON FORCES
TAKE THE FIGHT NORTH

DMMS Day 15 YEARS 15 YEARS GW 411 Sapere Aude << BACK

SWEEP **Falcon1** **AAR** **OSAN** **OSCAR** **SEOSAN** **MALLIPO** **SWEEP** **SWEEP**

RK(R)-134 5000' SFC
ACMI (ALFA BRAVO CHARLIE) 5000' 9000' 6000' 10000' SFC
MOA 1 (YELLOW/MPS) FL400 10000' SFC
RK(R)-80 FL400 10000' SFC
MALLIPO FL250 FL140
RK(R)-80 FL400 10000' SFC
MOA 2 FL400 10000' SFC
RK(R)-105

75.2 60.4 70.3 20.0 30.6 33.9 50.2

12 06 07 02 05 04 03 02 01 00 39 38 37 36 35 34 33 32 31 30 29 28 27 26 25 24 23 22 21 20 19 18 17 16 15 14 13 12 11 10 09 08 07 06 05 04 03 02 01 00

Heading PATRO
IFF-Check: Package KUNSAN

Heads up,
„Admiral Kusnezow“
nearby!

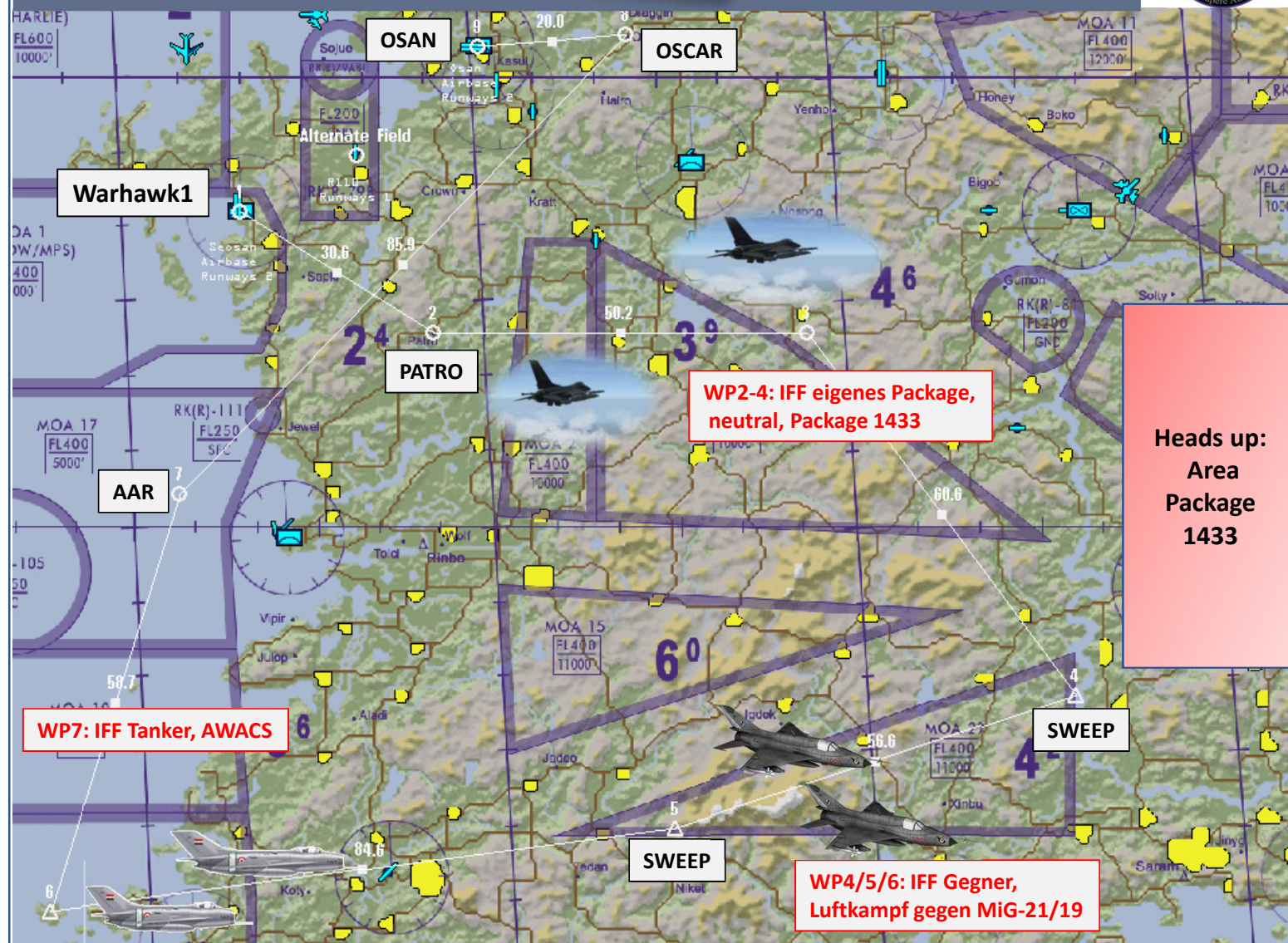

Notes



Notes

Kunsan Air Base

DEFEND THE BASE
ACCEPT FOLLOW ON FORCES
TAKE THE FIGHT NORTH



Kunsan Air Base

DEFEND THE BASE
ACCEPT FOLLOW ON FORCES
TAKE THE FIGHT NORTH



COMM LADDER:

AGENCY:	DALLSIGN:	UHF [QHNL]:	VHF [QHNL]:	NOTES:
INTRA-FLIGHT:	Falcon1	--	143.550 MHz [15]	Flight Management Comms
GUARD:	None	243.000 MHz	121.500 MHz	Distress / Emergency
COMMON:	None	339.750 MHz [14]	123.500 MHz [14]	Advisory / UNICOM
BASE OPS:	None	318.100 MHz [1]	--	Homeplate Operations
CHECK-IN:	Sentry1	296.625 MHz [5]	--	AWACS: Global Check-In
TACTICAL:	Sentry1	290.600 MHz [6]	--	AWACS: Package Comms
TANKER / AAR:	Texaco1	293.450 MHz [13]	--	Boom Operator
DEP ATIS:	Seosan ATIS	--	130.300 MHz	Departure Airbase
DEP GROUND:	Seosan Ground	275.800 MHz [2]	--	Departure Airbase
DEP TOWER:	Seosan Tower	353.100 MHz [3]	126.750 MHz [3]	Departure Airbase
DEP DEPARTURE:	Seosan Departure	253.950 MHz [4]	--	Departure Airbase
ARR ATIS:	Osan ATIS	--	132.125 MHz	Recovery Airbase
ARR APPROACH:	Osan Approach	306.300 MHz [7]	--	Recovery Airbase
ARR TOWER:	Osan Tower	308.800 MHz [8]	122.100 MHz [8]	Recovery Airbase
ARR GROUND:	Osan Ground	253.700 MHz [9]	--	Recovery Airbase
ALT ATIS:	Pyongtaeg ATIS	--	128.250 MHz	Alternate Airbase
ALT APPROACH:	Pyongtaeg Approach	363.100 MHz [10]	--	Alternate Airbase
ALT TOWER:	Pyongtaeg Tower	257.800 MHz [11]	122.500 MHz [11]	Alternate Airbase
ALT GROUND:	Pyongtaeg Ground	229.700 MHz [12]	--	Alternate Airbase

IFF

GENERAL:

Initial STAT Settings: Modes Active: M124 Codes: M1: 12 M2: 4254 M3: 7404
 M4 Validity Time (Until): Key A: Day2 00:00 Key B: Day3 00:00
 IFF Policy: M1: per team M2: per aircraft M3: per aircraft
 Code Change Setting: TIM

TIME EVENTS:

Rot/day:	15:00	16:00	17:00	18:00	19:00	20:00	21:00	22:00	23:00	00:00	01:00	02:00	
M1:	24	50	10	13	73	33	30	03	21	71	31	31	62
M3:	24	1630	2030	6754	3004	7104	7454	5430	7104	6154	3354	7630	2454
M4:	1	A	A	A	A	A	A	A	A	A	B	B	B

POS EVENTS:

Ingress: M124 / ----- Egress: M124 / -----

Kunsan Air Base

DEFEND THE BASE
ACCEPT FOLLOW ON FORCES
TAKE THE FIGHT NORTH



COMM LADDER:

AGENCY:	CALLSIGN:	UHF [QHNL]:	VHF [QHNL]:	NOTES:
INTRA-FLIGHT:	Gamble1	--	140.150 MHz [15]	Flight Management Comms
GUARD:	None	243.000 MHz	121.500 MHz	Distress / Emergency
COMMON:	None	339.750 MHz [14]	123.500 MHz [14]	Advisory / UNICOM
BASE OPS:	None	304.800 MHz [1]	--	Homeplate Operations
CHECK-IN:	Sentry1	296.625 MHz [5]	--	AWACS: Global Check-In
TACTICAL:	Sentry1	330.000 MHz [6]	--	AWACS: Package Comms
TANKER / AAR:	Texaco1	293.450 MHz [13]	--	Boom Operator
DEP ATIS:	Kunsan ATIS	--	120.225 MHz	Departure Airbase
DEP GROUND:	Kunsan Ground	273.525 MHz [2]	--	Departure Airbase
DEP TOWER:	Kunsan Tower	292.300 MHz [3]	126.500 MHz [3]	Departure Airbase
DEP DEPARTURE:	Kunsan Departure	292.650 MHz [4]	--	Departure Airbase
ARR ATIS:	Osan ATIS	--	132.125 MHz	Recovery Airbase
ARR APPROACH:	Osan Approach	306.300 MHz [7]	--	Recovery Airbase
ARR TOWER:	Osan Tower	308.800 MHz [8]	122.100 MHz [8]	Recovery Airbase
ARR GROUND:	Osan Ground	253.700 MHz [9]	--	Recovery Airbase
ALT ATIS:	Pyongtaeg ATIS	--	128.250 MHz	Alternate Airbase
ALT APPROACH:	Pyongtaeg Approach	363.100 MHz [10]	--	Alternate Airbase
ALT TOWER:	Pyongtaeg Tower	257.800 MHz [11]	122.500 MHz [11]	Alternate Airbase
ALT GROUND:	Pyongtaeg Ground	229.700 MHz [12]	--	Alternate Airbase

+Hawkeye +Plasma

IFF

GENERAL:

Initial STAT Settings: Modes Active: M124 Codes: M1: 12 M2: 5204 M3: 6630
M4 Validity Time (Until): Key A: Day2 00:00 Key B: Day3 00:00
IFF Policy: M1: per team M2: per aircraft M3: per aircraft
Code Change Setting: TIM

TIME EVENTS:

Rot/day:	15:00	16:00	17:00	18:00	19:00	20:00	21:00	22:00	23:00	00:00	01:00	02:00
M1:	24	50	10	13	73	33	30	03	21	71	31	62
M3:	24	0354	7504	6104	5630	3254	2030	0304	4254	1154	2304	1004 7230
M4:	1	A	A	A	A	A	A	A	A	A	B	B

POS EVENTS:

Ingress: M124 / ----- Egress: M124 / -----

Kunsan Air Base

DEFEND THE BASE
ACCEPT FOLLOW ON FORCES
TAKE THE FIGHT NORTH



COMM LADDER:

AGENCY:	CALLSIGN:	UHF [QHNL]:	VHF [QHNL]:	NOTES:
INTRA-FLIGHT:	Warhawk1	--	141.375 MHz [15]	Flight Management Comms
GUARD:	None	243.000 MHz	121.500 MHz	Distress / Emergency
COMMON:	None	339.750 MHz [14]	123.500 MHz [14]	Advisory / UNICOM
BASE OPS:	None	318.100 MHz [1]	--	Homeplate Operations
CHECK-IN:	Sentry1	296.625 MHz [5]	--	AWACS: Global Check-In
TACTICAL:	Sentry1	335.275 MHz [6]	--	AWACS: Package Comms
TANKER / AAR:	Texaco1	293.450 MHz [13]	--	Boom Operator
DEP ATIS:	Seosan ATIS	--	130.300 MHz	Departure Airbase
DEP GROUND:	Seosan Ground	275.800 MHz [2]	--	Departure Airbase
DEP TOWER:	Seosan Tower	353.100 MHz [3]	126.750 MHz [3]	Departure Airbase
DEP DEPARTURE:	Seosan Departure	253.950 MHz [4]	--	Departure Airbase
ARR ATIS:	Seosan ATIS	--	130.300 MHz	Recovery Airbase
ARR APPROACH:	Seosan Approach	253.950 MHz [4]	--	Recovery Airbase
ARR TOWER:	Seosan Tower	353.100 MHz [3]	126.750 MHz [3]	Recovery Airbase
ARR GROUND:	Seosan Ground	275.800 MHz [2]	--	Recovery Airbase
ALT ATIS:	R110 ATIS	--	--	Alternate Airbase
ALT APPROACH:	R110 Approach	236.600 MHz [10]	--	Alternate Airbase
ALT TOWER:	R110 Tower	236.600 MHz [10]	122.600 MHz [11]	Alternate Airbase
ALT GROUND:	R110 Ground	236.600 MHz [10]	--	Alternate Airbase

IFF

GENERAL:

Initial STAT Settings: Modes Active: M124 Codes: M1: 12 M2: 3654 M3: 2454
M4 Validity Time (Until): Key A: Day2 00:00 Key B: Day3 00:00
IFF Policy: M1: per team M2: per aircraft M3: per aircraft
Code Change Setting: TIM

TIME EVENTS:

Rot/day:	15:00	16:00	17:00	18:00	19:00	20:00	21:00	22:00	23:00	00:00	01:00	02:00
M1:	24 50	10	13	73	33	30	03	21	71	31	31	62
M3:	24 2230	4454	1504	5530	0230	2654	2654	5054	6304	3504	1530	4604
M4:	1 A	A	A	A	A	A	A	A	A	B	B	B

POS EVENTS:

Ingress: M124 / ----- Egress: M124 / -----