



KUNSAN Air Base/Republic of Korea
HQ 1st Glory Wings
-Commanding Officer-



Flight-Training 2019-09-17

ROSTER

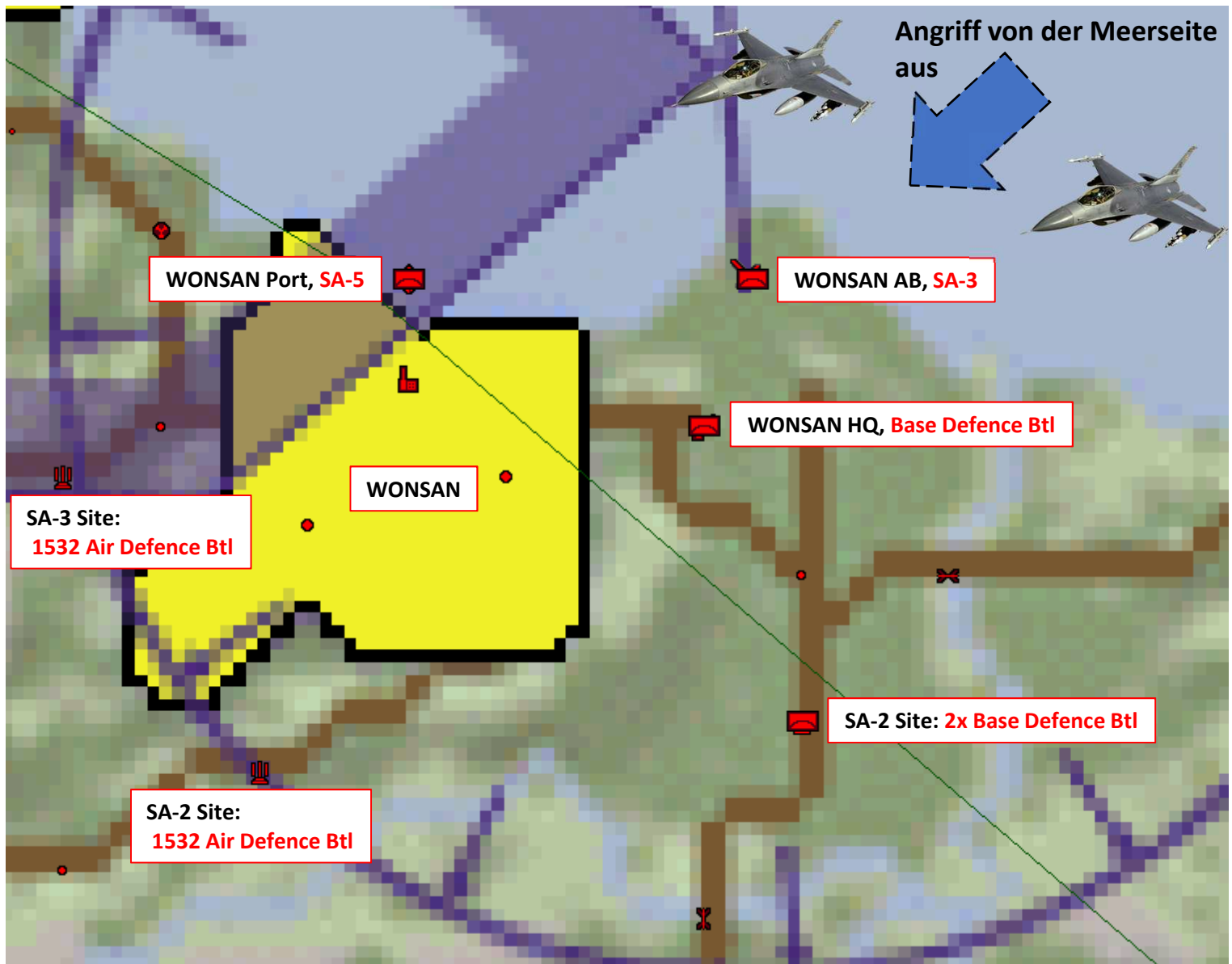
Package1

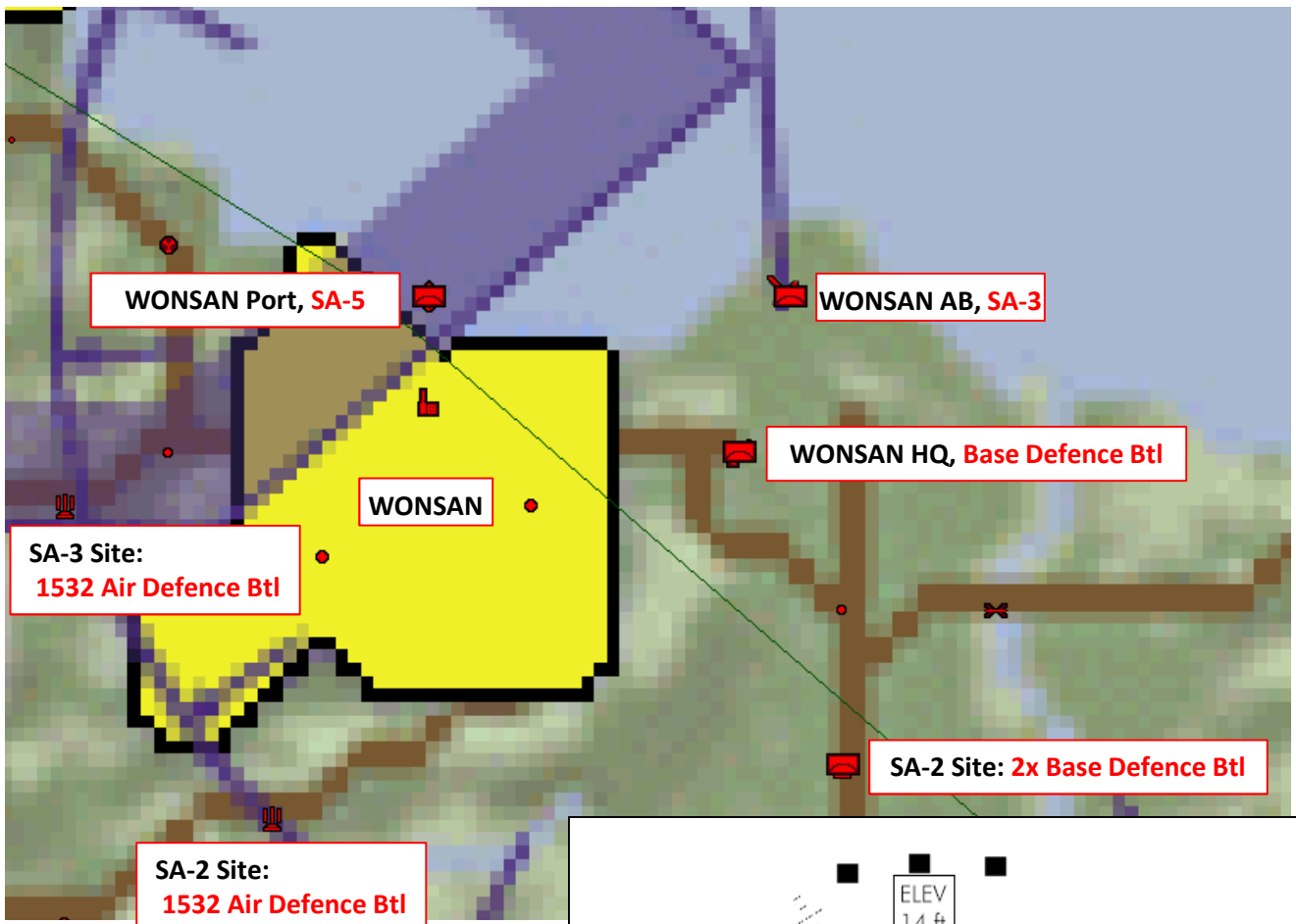
Package2

Flight1 (DEAD) : Anvil, BadCrow
 Flight2 (Strike1) : Cupra, Joker
 Flight3 (Strike2) : TheWitch, Bluebird
 Flight4 (DEAD) : n/n
 Flight5 (Strike3) : Dro16, Hunter

Flight1 (Escort/CAP) : Stingray, Caesar
 Flight2 (CAP) : n/n

Im Zuge der Vorbereitung auf eine Operation, welche im Rahmen von „Giants Causeway“ durchgeführt wird, wurden die Örtlichkeiten/Gegebenheiten das kommenden „Angriffszieles“ 1:1 in die Area „WONSAN“ übertragen! 1st GW schaltet zunächst die SAM-Sicherung aus und greift dann die Base mittels Abstandswaffen an. Zum Einsatz sollen AGM-154A u. AGM-158 JASSM kommen.





AUFTRAG

Anvil, BadCrow : SA-5, SA-2! SA-3 nur bei freier Kapazität!

Unterstützt Falcon1 gem. Anforderung!

Dro16, Hunter: WONSAN Harbour (ANNEX1)

TheWitch, Bluebird: WONSAN AB - **AGM-158 JASSM**

- Runways (2) mit jeweils drei Sektionen ★

Cupra, Joker: WONSAN AB, **AGM-158 JASSM**

- Runways (2) mit jeweils drei Sektionen in enger Absprache mit Witch/Bluebird

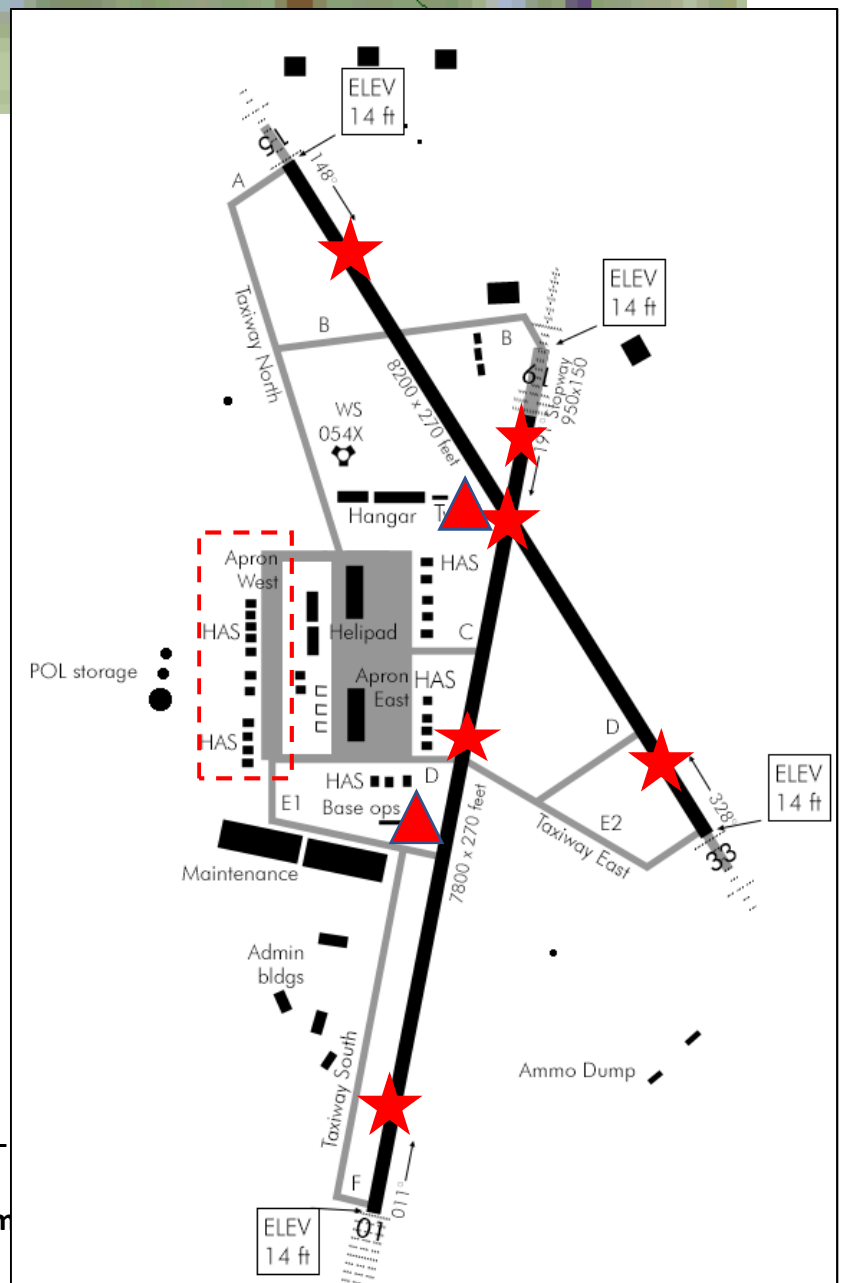
- Tower (2) ▲

*HAS und sonstige Infrastruktur werden durch nachfolgende Striker (KI) zerstört.

Stingray, Caesar:

Erringen der Luftüberlegenheit, sichern der Teile DEAD und Striker für mind. 20 min. Sichern der 6-Uhr Position nach „RTB“!

DEAD unterstützt nach Auftragsdurchführung gem Anforderung!





WONSAN Port – Target WEASEL1

- Dock Crane
- Transport Crane center



TARGET LIST		
TARGET	CONDITION	VALUE
warehouse	no damage	medium
Warehouse	No damage	Medium
Dock Crane	No damage	Low
Crane Arch	No damage	Low
Dock Crane	No damage	Low
Dock Crane	No damage	Low
Dock Crane	No damage	Low
Containers	No damage	Low
Containers	No damage	Low



Tanker – AAR (Management)

Flights Falcon1 u. Gamble1 tanken bei „Chopper1“!

Flights Cyborg1, Mudhen1, Wesel1 wurde der Tanker „Texaco1“ zugewiesen!

Beide Tanker befinden sich in der gleichen Area. Es gilt den richtigen Tanker anhand seines „spezifischen“ Codes zu identifizieren!

IFF **IFF-Data Copper1**

GENERAL:
 Initial STAT Settings: Modes Active: M124 Codes: M1: 13 M2: 4354 M3: 6530
 M4 Validity Time (Until): Key A: Day2 00:00 Key B: Day3 00:00
 IFF Policy: M1: per team M2: per aircraft M3: per aircraft
 Code Change Setting: TIM

TIME EVENTS:

Rot/day:	18:00	19:00	20:00	21:00	22:00	23:00	00:00	01:00	02:00	03:00	04:00	05:00	
M1:	24	73	33	30	03	21	71	31	31	62	71	23	52
M3:	24	4704	1304	5754	5630	7130	7230	4530	7654	0554	1504	7554	4404
M4:	1	A	A	A	A	A	A	B	B	B	B	B	B

POS EVENTS:
 Ingress: M124 / ----- Egress: M124 / -----



IFF **IFF-Data Texaco1**

GENERAL:
 Initial STAT Settings: Modes Active: M124 Codes: M1: 13 M2: 0254 M3: 3230
 M4 Validity Time (Until): Key A: Day2 00:00 Key B: Day3 00:00
 IFF Policy: M1: per team M2: per aircraft M3: per aircraft
 Code Change Setting: TIM

TIME EVENTS:

Rot/day:	18:00	19:00	20:00	21:00	22:00	23:00	00:00	01:00	02:00	03:00	04:00	05:00	
M1:	24	73	33	30	03	21	71	31	31	62	71	23	52
M3:	24	3730	6354	5630	6330	7030	4430	5304	1604	2704	1704	3604	2730
M4:	1	A	A	A	A	A	A	B	B	B	B	B	B

POS EVENTS:
 Ingress: M124 / ----- Egress: M124 / -----



Package Stingray, Caesar, Anvil, BadCrow (Falcon1, Gamble1)

COMM LADDER:

AGENCY:	CALLSIGN:	UHF [GHNL]:	VHF [GHNL]:	NOTES:
INTRA-FLIGHT:	Falcon1	--	143.550 MHz [15]	Flight Management Comms
GUARD:	None	243.000 MHz	121.500 MHz	Distress / Emergency
COMMON:	None	339.750 MHz [14]	123.500 MHz [14]	Advisory / UNICOM
BASE OPS:	None	240.500 MHz [1]	--	Homeplate Operations
CHECK-IN:	Chalice1	292.450 MHz [5]	--	AWACS: Global Check-In
TACTICAL:	Chalice1	290.600 MHz [6]	--	AWACS: Package Comms
TANKER / AAR:	Texaco1	293.450 MHz [13]	--	Boom Operator
DEP ATIS:	Sokcho ATIS	--	123.150 MHz	Departure Airbase
DEP GROUND:	Sokcho Ground	240.400 MHz [2]	--	Departure Airbase
DEP TOWER:	Sokcho Tower	236.600 MHz [3]	122.200 MHz [3]	Departure Airbase
DEP DEPARTURE:	Sokcho Departure	304.400 MHz [4]	--	Departure Airbase
ARR ATIS:	Kangnung ATIS	--	132.050 MHz	Recovery Airbase
ARR APPROACH:	Kangnung Approach	304.000 MHz [7]	--	Recovery Airbase
ARR TOWER:	Kangnung Tower	334.900 MHz [8]	126.200 MHz [4]	Recovery Airbase
ARR GROUND:	Kangnung Ground	275.800 MHz [9]	--	Recovery Airbase
ALT ATIS:	Sokcho ATIS	--	123.150 MHz	Alternate Airbase
ALT APPROACH:	Sokcho Approach	304.400 MHz [4]	--	Alternate Airbase
ALT TOWER:	Sokcho Tower	236.600 MHz [3]	122.200 MHz [3]	Alternate Airbase
ALT GROUND:	Sokcho Ground	240.400 MHz [2]	--	Alternate Airbase

IFF Falcon1

GENERAL:

Initial STAT Settings: Modes Active: M124 Codes: M1: 13 M2: 2454 M3: 3130
 M4 Validity Time (Until): Key A: Day2 00:00 Key B: Day3 00:00
 IFF Policy: M1: per team M2: per aircraft M3: per aircraft
 Code Change Setting: TIM

TIME EVENTS:

Rot/day:	18:00	19:00	20:00	21:00	22:00	23:00	00:00	01:00	02:00	03:00	04:00	05:00
M1:	24 73	33 30	03 21	71 31	31 31	62 71	23 52					
M3:	24 4454	5004 0130	7004 6204	2054 5554	4330 2430	1354 4454	5254					
M4:	1 A	A A	A A	A A	B B	B B	B B					

POS EVENTS:

Ingress: M124 / ----- Egress: M124 / -----

IFF Gamble1

GENERAL:

Initial STAT Settings: Modes Active: M124 Codes: M1: 13 M2: 2460 M3: 3134
 M4 Validity Time (Until): Key A: Day2 00:00 Key B: Day3 00:00
 IFF Policy: M1: per team M2: per aircraft M3: per aircraft
 Code Change Setting: TIM

TIME EVENTS:

Rot/day:	18:00	19:00	20:00	21:00	22:00	23:00	00:00	01:00	02:00	03:00	04:00	05:00
M1:	24 73	33 30	03 21	71 31	31 31	62 71	23 52					
M3:	24 4460	5010 0134	7010 6210	2060 5560	4334 2434	1360 4460	5260					
M4:	1 A	A A	A A	A A	B B	B B	B B					

POS EVENTS:

Ingress: M124 / ----- Egress: M124 / -----



Package Cyborg1, Mudhen1, Weasel1

COMM LADDER:

AGENCY:	BALLSIGN:	UHF [CHNL]:	VHF [CHNL]:	NOTES:
INTRA-FLIGHT:	Cyborg1	--	139.275 MHz [16]	Flight Management Comms
GUARD:	None	243.000 MHz	121.500 MHz	Distress / Emergency
COMMON:	None	339.750 MHz [14]	123.500 MHz [14]	Advisory / UNICOM
BASE OPS:	None	240.500 MHz [1]	--	Homeplate Operations
CHECK-IN:	Chalice1	292.450 MHz [5]	--	AWACS: Global Check-In
TACTICAL:	Chalice1	335.275 MHz [6]	--	AWACS: Package Comms
TANKER / AAR:	Texaco1	293.450 MHz [13]	--	Boom Operator
DEP ATIS:	Sokcho ATIS	--	123.150 MHz	Departure Airbase
DEP GROUND:	Sokcho Ground	240.400 MHz [2]	--	Departure Airbase
DEP TOWER:	Sokcho Tower	236.600 MHz [3]	122.200 MHz [3]	Departure Airbase
DEP DEPARTURE:	Sokcho Departure	304.400 MHz [4]	--	Departure Airbase
ARR ATIS:	Kangnung ATIS	--	132.050 MHz	Recovery Airbase
ARR APPROACH:	Kangnung Approach	304.000 MHz [7]	--	Recovery Airbase
ARR TOWER:	Kangnung Tower	334.900 MHz [8]	126.200 MHz [4]	Recovery Airbase
ARR GROUND:	Kangnung Ground	275.800 MHz [9]	--	Recovery Airbase
ALT ATIS:	Sokcho ATIS	--	123.150 MHz	Alternate Airbase
ALT APPROACH:	Sokcho Approach	304.400 MHz [4]	--	Alternate Airbase
ALT TOWER:	Sokcho Tower	236.600 MHz [3]	122.200 MHz [3]	Alternate Airbase
ALT GROUND:	Sokcho Ground	240.400 MHz [2]	--	Alternate Airbase

IFF Cyborg1

GENERAL:

Initial STAT Settings: Modes Active: M124 Codes: M1: 13 M2: 5510 M3: 3634
 M4 Validity Time (Until): Key A: Day2 00:00 Key B: Day3 00:00
 IFF Policy: M1: per team M2: per aircraft M3: per aircraft
 Code Change Setting: TIM

TIME EVENTS:

Rot/day:	18:00	19:00	20:00	21:00	22:00	23:00	00:00	01:00	02:00	03:00	04:00	05:00	
M1:	24	73	33	30	03	21	71	31	31	62	71	23	52
M3:	24	3010	2010	1760	0160	0334	7434	0610	0410	0110	6634	6534	3534
M4:	1	A	A	A	A	A	A	B	B	B	B	B	B

POS EVENTS:
 Ingress: M124 / ----- Egress: M124 / -----

IFF Mudhen1

GENERAL:

Initial STAT Settings: Modes Active: M124 Codes: M1: 13 M2: 5514 M3: 3640
 M4 Validity Time (Until): Key A: Day2 00:00 Key B: Day3 00:00
 IFF Policy: M1: per team M2: per aircraft M3: per aircraft
 Code Change Setting: TIM

TIME EVENTS:

Rot/day:	18:00	19:00	20:00	21:00	22:00	23:00	00:00	01:00	02:00	03:00	04:00	05:00	
M1:	24	73	33	30	03	21	71	31	31	62	71	23	52
M3:	24	3014	2014	1764	0164	0340	7440	0614	0414	0114	6640	6540	3540
M4:	1	A	A	A	A	A	A	B	B	B	B	B	B

POS EVENTS:
 Ingress: M124 / ----- Egress: M124 / -----



IFF

Weasel1

GENERAL:

Initial STAT Settings: Modes Active: M124 Codes: M1: 13 M2: 5520 M3: 3644
M4 Validity Time (Until): Key A: Day2 00:00 Key B: Day3 00:00
IFF Policy: M1: per team M2: per aircraft M3: per aircraft
Code Change Setting: TIM

TIME EVENTS:

Rot/day:	18:00	19:00	20:00	21:00	22:00	23:00	00:00	01:00	02:00	03:00	04:00	05:00	
M1:	24	73	33	30	03	21	71	31	31	62	71	23	52
M3:	24	3020	2020	1770	0170	0344	7444	0620	0420	0120	6644	6544	3544
M4:	1	A	A	A	A	A	A	B	B	B	B	B	B

POS EVENTS:

Ingress: M124 / ---- Egress: M124 / ----

ZEITEN

TO: SOKCHO AB

ARR: KANGNUNG AB

Falcon1, 1800LT: Stingray, Caesar
Gamble1, 1801LT: Anvil, BadCrow

Package 1613, F-16CM-52

Cyborg1, 1805LT: Cupra, Joker
Mudhen1: 1806LT TheWitch, Bluebird
Weasel1, 1807LT: Dro16, Hunter

Package 1944, F-16CM-50

KOORDINIERUNG

DEAD/Escort am WP 4 (Sammelpunkt): 18:12:45LT
DEAD 1. Schuss = 18:20LT

Striker am WP5 (Sammelpunkt): 18:20LT

Holding, Freigabe zum Einflug nachdem SA-5 „down“,
Angriff aus max. Range

Good Luck!

Weitere Striker (KI) folgen mit TOT: 1900LT

Der C/O