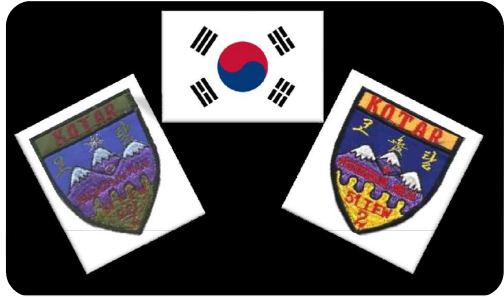


Flight-Training 12-11-2019



„Goodbye KOTAR“

Package: 1329, CAS, F-16CM-52

Schwerpunkte:

- Formationsflug
- Einsatz LAU auf der KOTAR, on dry run before!
- AAR
- Visual KUNSAN
- Straight-In or Overhead

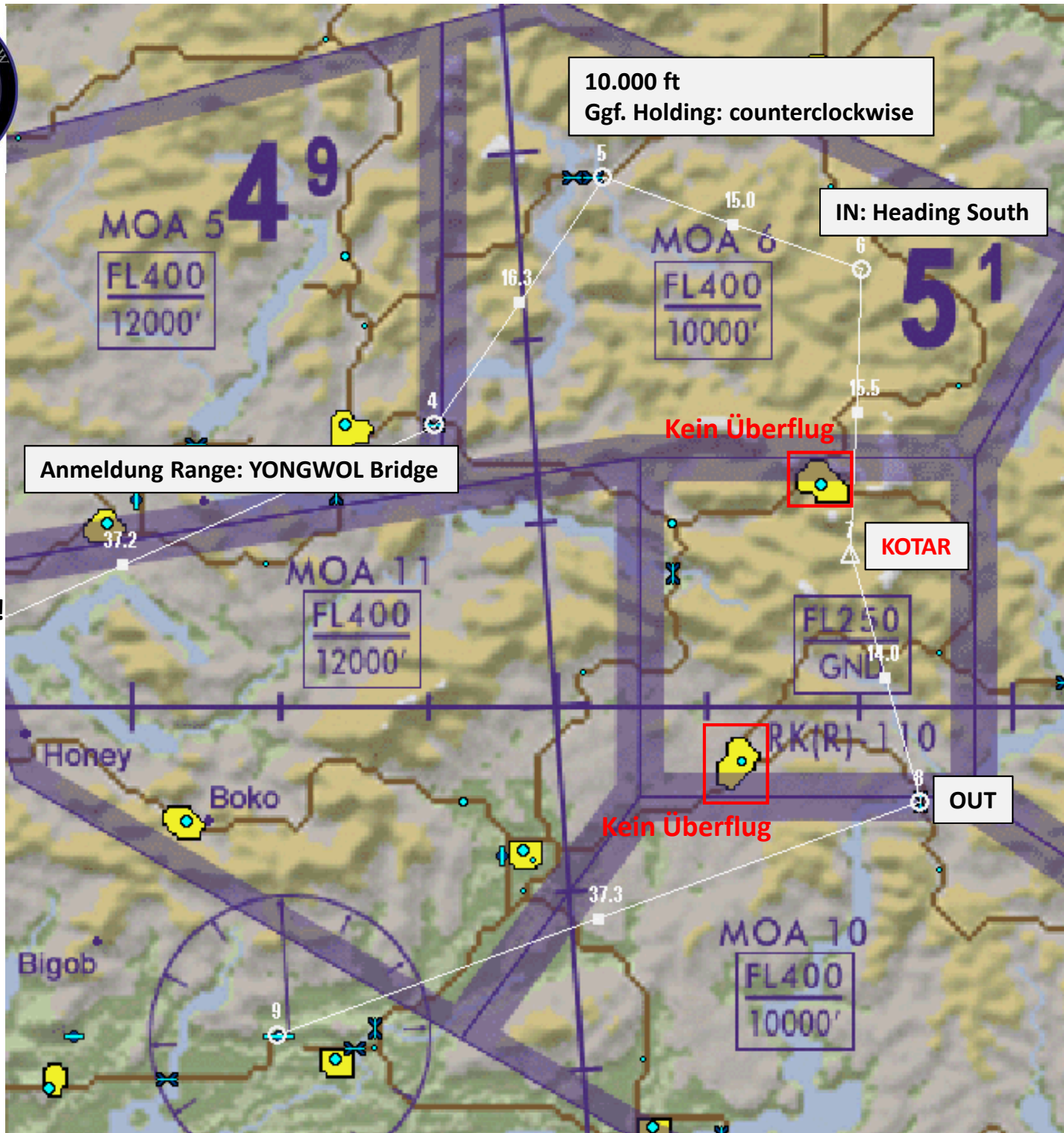
TO: KUNSAN AB, 1300LT,
ARR: KUNSAN AB, approx. 14:30LT

Weather-Forecast: sunny, NOSIG

Wind: 290°, 5-10 kts

Good Luck!

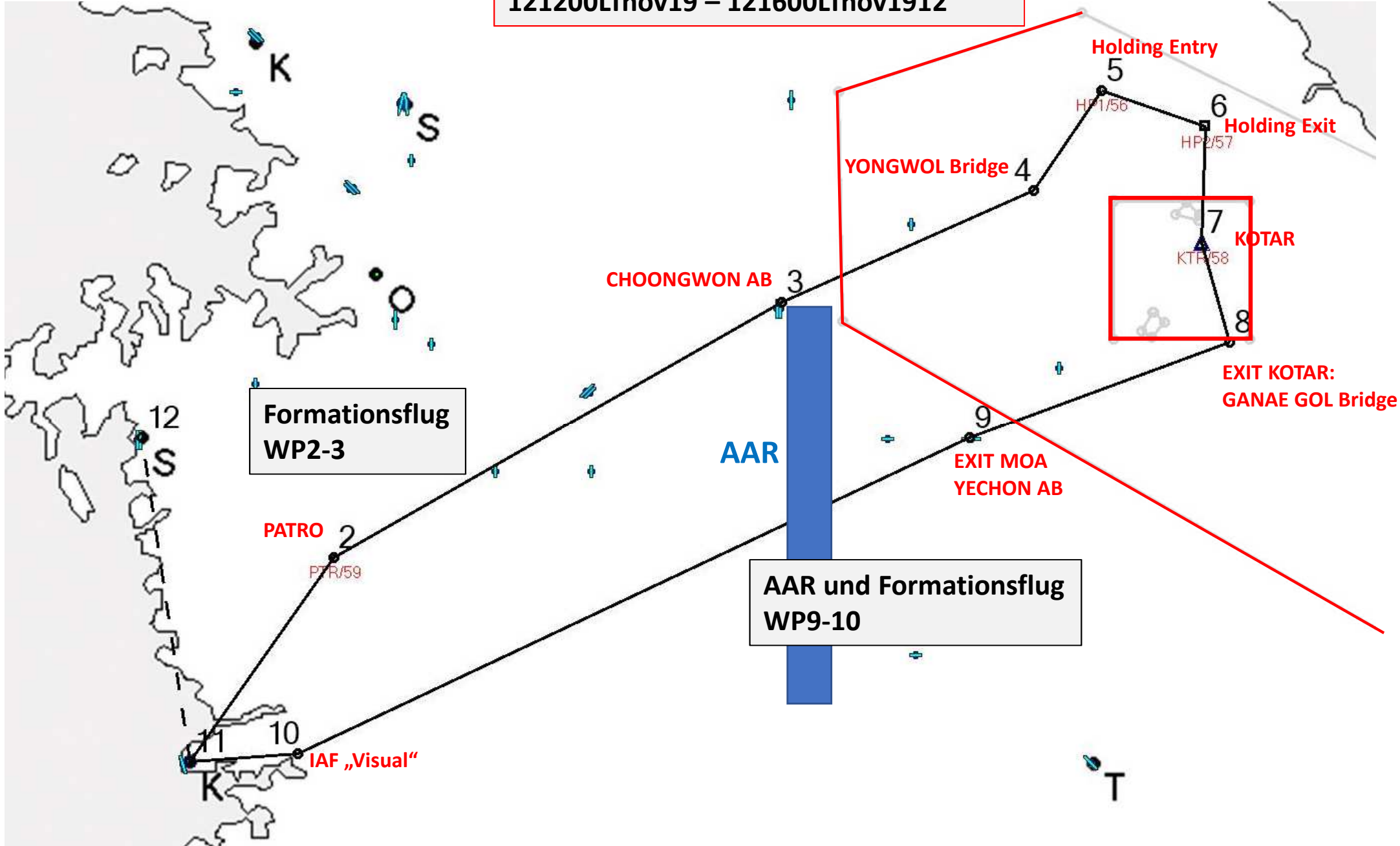
Der C/O

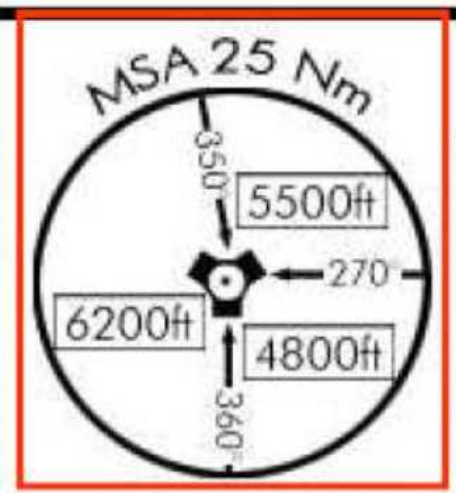


Flightpath



Restricted Area: MOA 5, 6, 10,11, KOTAR
121200LTnov19 – 121600LTnov1912

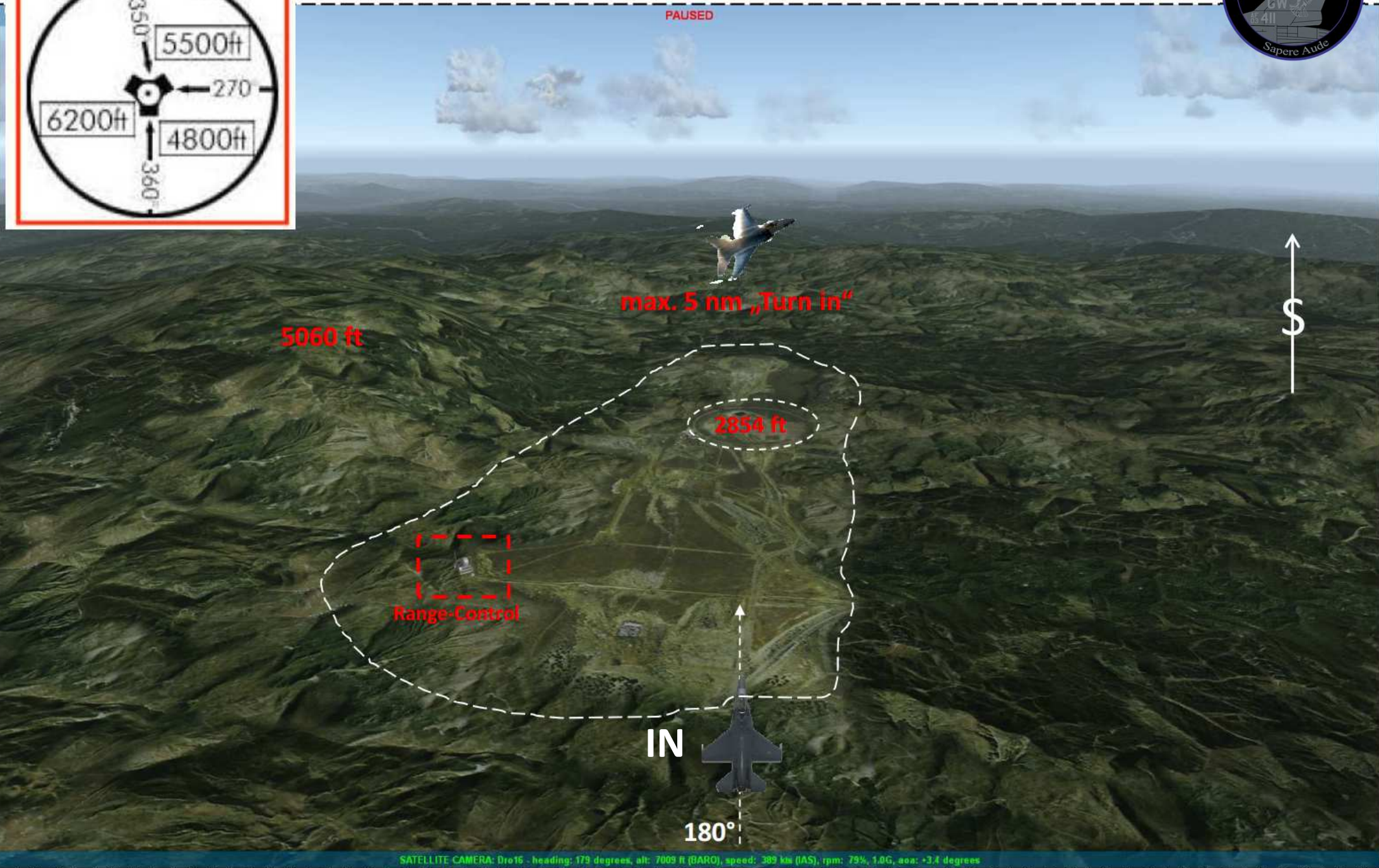




KOTAR



PAUSED



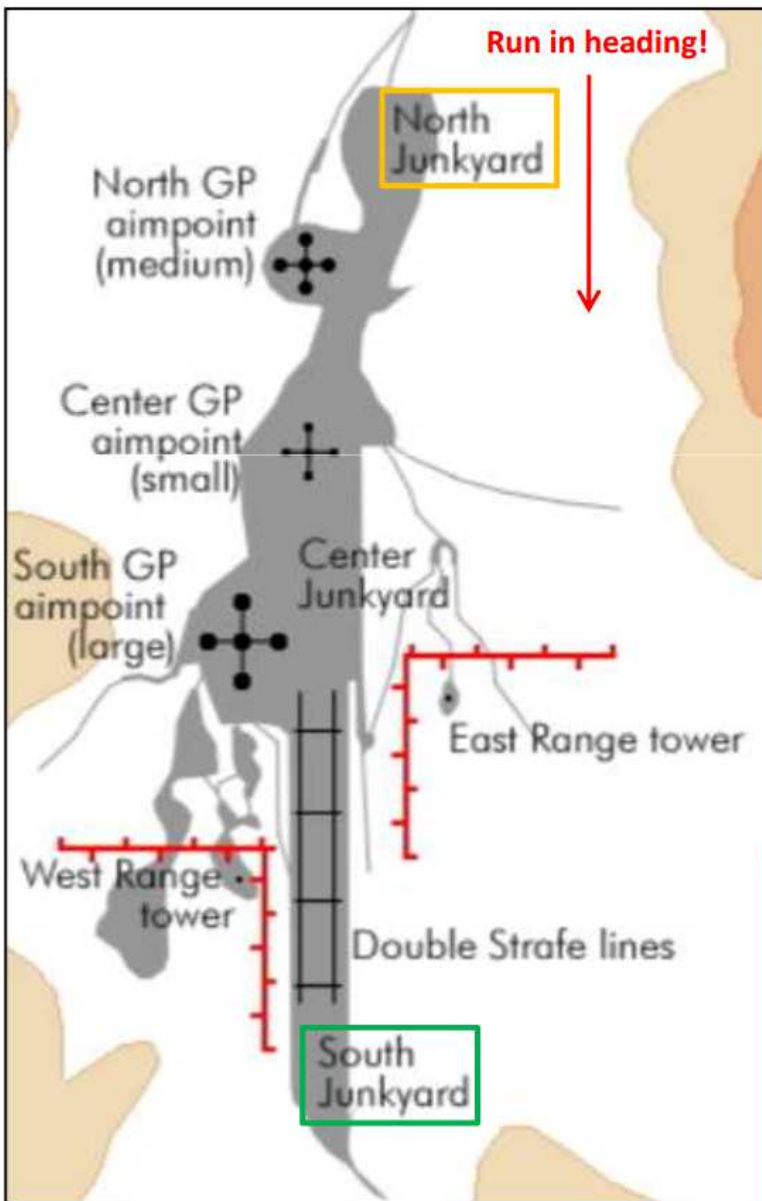


Range Occupancy

Achtung!

East Range Tower, West Range Tower und Radar&Admin Station sind mit Human besetzt!
Kein Waffeneinsatz auf diese Einrichtungen!

ANNEX 1



Warhawk1

Double Strafe Line targets:

- West Row #1: N37°08.025' - E130°20.652'
- West Row #2: N37°07.961' - E130°20.649'
- West Row #3: N37°07.895' - E130°20.645'
- West Row #4: N37°07.839' - E130°20.641'
- East Row #1: N37°08.025' - E130°20.684'
- East Row #2: N37°07.961' - E130°20.681'
- East Row #3: N37°07.895' - E130°20.677'
- East Row #4: N37°07.839' - E130°20.674'

Target Assignment :

North Junkyard:

- Mig-15 #1: N37°08.651' - E130°20.790'
- Mig-15 #2: N37°08.651' - E130°20.866'
- Mig-15 #3: N37°08.627' - E130°20.829'
- Mig-15 #4: N37°08.605' - E130°20.781'
- Mig-15 #5: N37°08.579' - E130°20.806'
- Mig-15 #6: N37°08.603' - E130°20.844'
- Mig-15 #7: N37°08.575' - E130°20.827'
- Mig-15 #8: N37°08.551' - E130°20.796'

Falcon1, Hawkey1

South Junkyard:

- M2A3 #1: N37°07.746' - E130°20.624'
- M2A3 #2: N37°07.732' - E130°20.621'
- M2A3 #3: N37°07.717' - E130°20.631'
- M2A3 #4: N37°07.738' - E130°20.650'
- M2A3 #5: N37°07.715' - E130°20.668'

Gamble1, Plasma1