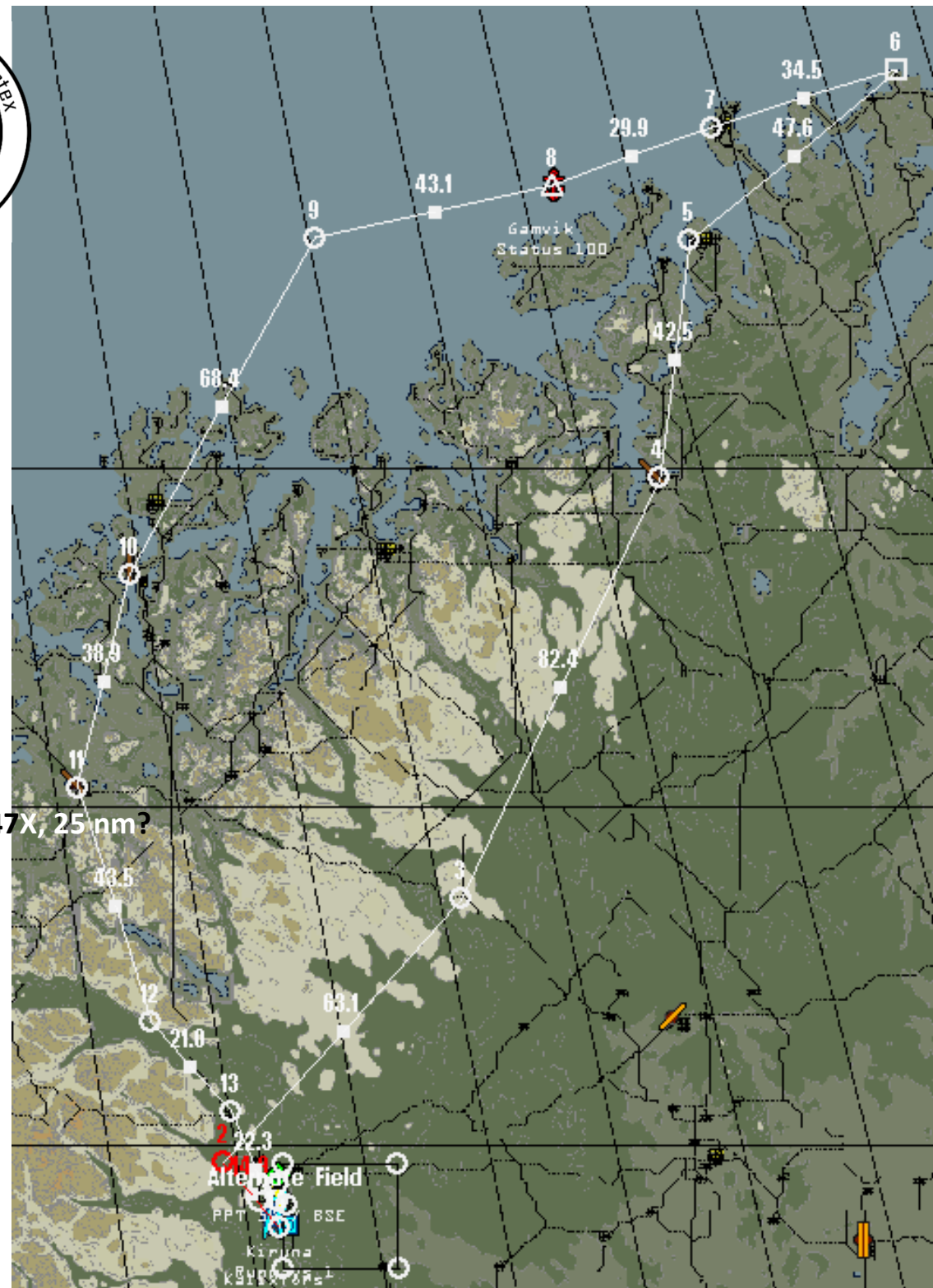


Unterlagen zum Flight-Training: **07.04.2020**

Operation Polar Vortex





Flight-Path

N71° 10' 21"
„KALIXFORS – NORTH CAPE
and return“

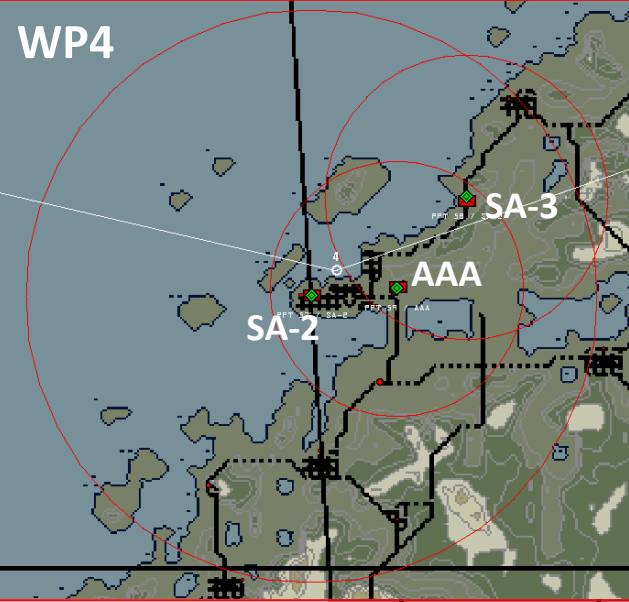
1. KALIXFORS AB
2. Exit Point KUMU
3. NAV (KAARESUVATO City – check TCN-Info 121X, 60nm)
4. ALTA AB (start low level – NOE)
5. NAV (HAMMERFEST)
6. **NAV (NORTH CAPE)**
7. NAV (KAARESFORS Harbour)
8. TARGET-AREA 1: GARNFIK (AGM-65G)
9. TARGET-AREA 2: LOPPA (AGM-65G) – Navigation via TCN 047X, 25 nm?
10. LANGNES AB (Hot-Pit)
11. BARDUFLOSS AB (check TCN-Info 081X, 200 nm)
12. NAV
13. IP NORTH (start visual approach)
14. KALIXFORS AB
15. ALTERNATE KIRUNA AB

Weather-Forecast:

- Sunny - BCMG FAIR 0600Z, clouds 3/8 at 10.000ft MSL
- Wind 200°, 5-10 kts
- Temp. +3°C
- Sunrise: 0520Z

WP4

Flight-Path Gamble1 (DEAD) - Hawkeye1 (Escort)

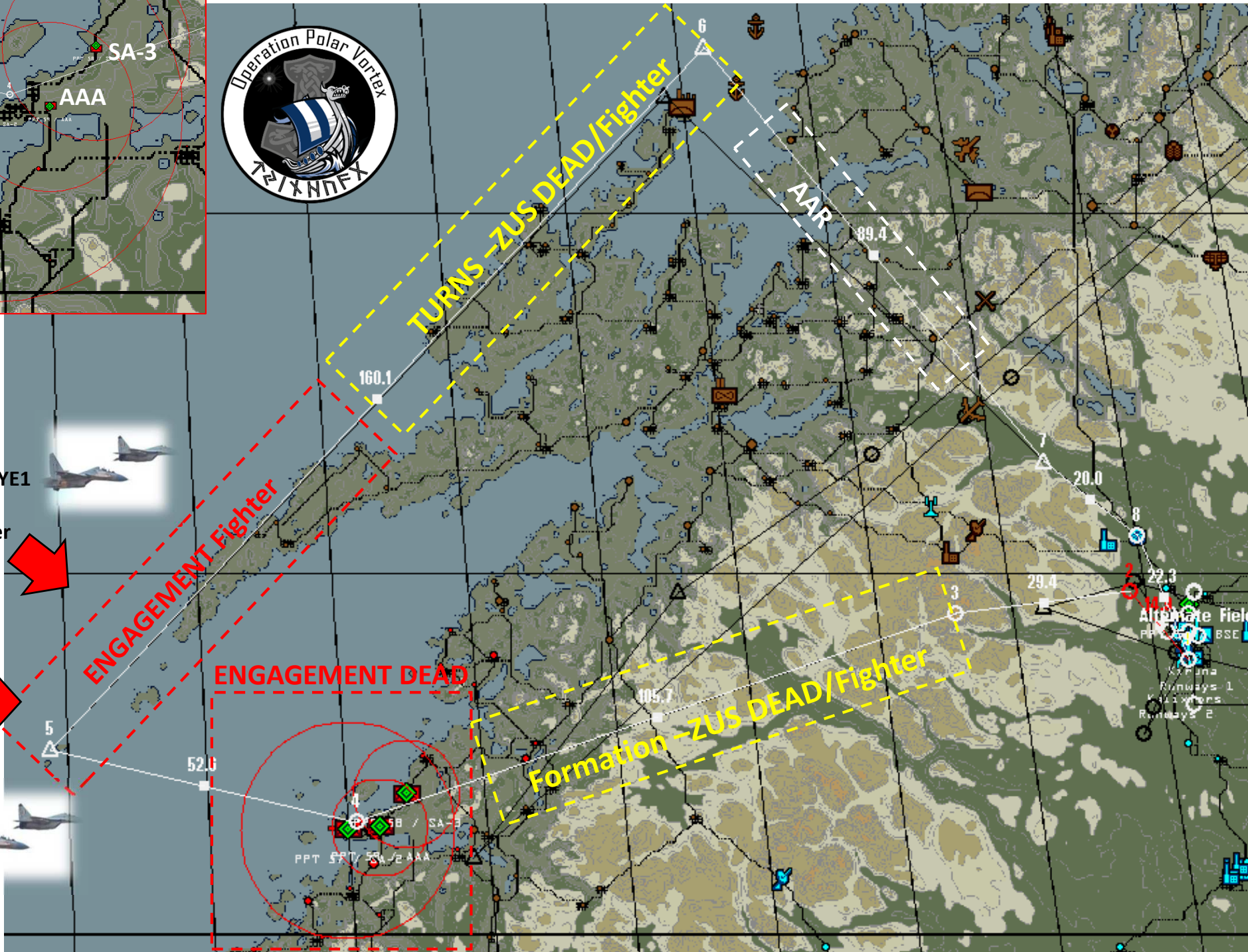


Flight-Path

1. KALIXFORS AB
2. EXIT KUMU
3. PUSH
GAMBLE1/HAWKEYE1
4. Engagement DEAD
5. Engagement Fighter
6. NAV
7. NAV
8. IP N (start visual)
9. KALIXFORS AB
10. ALTERNATE
KIRUNA AB

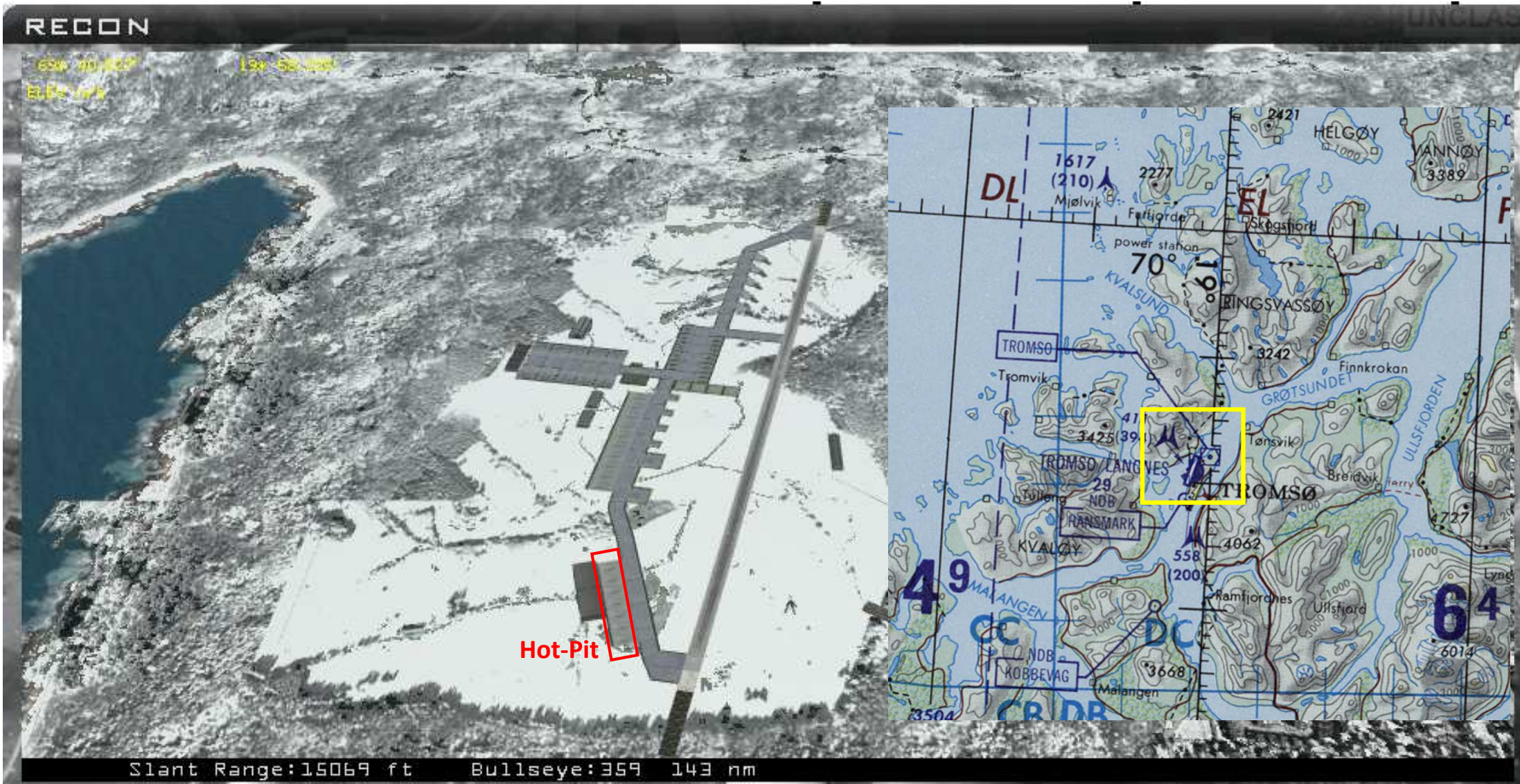
OPFOR-Fighter Class:

- MiG-23
- MiG-21
- MiG-29A





WP10 –LANGNES Air Base – Hot-Pit

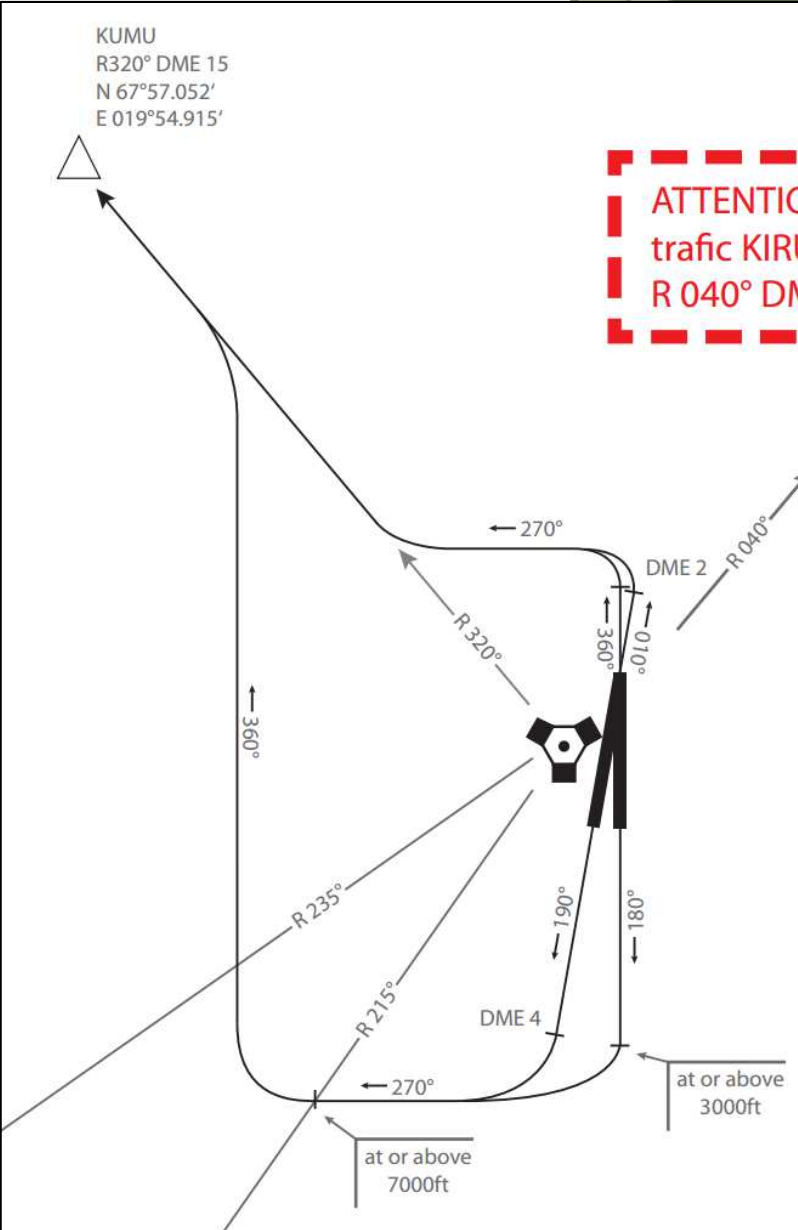
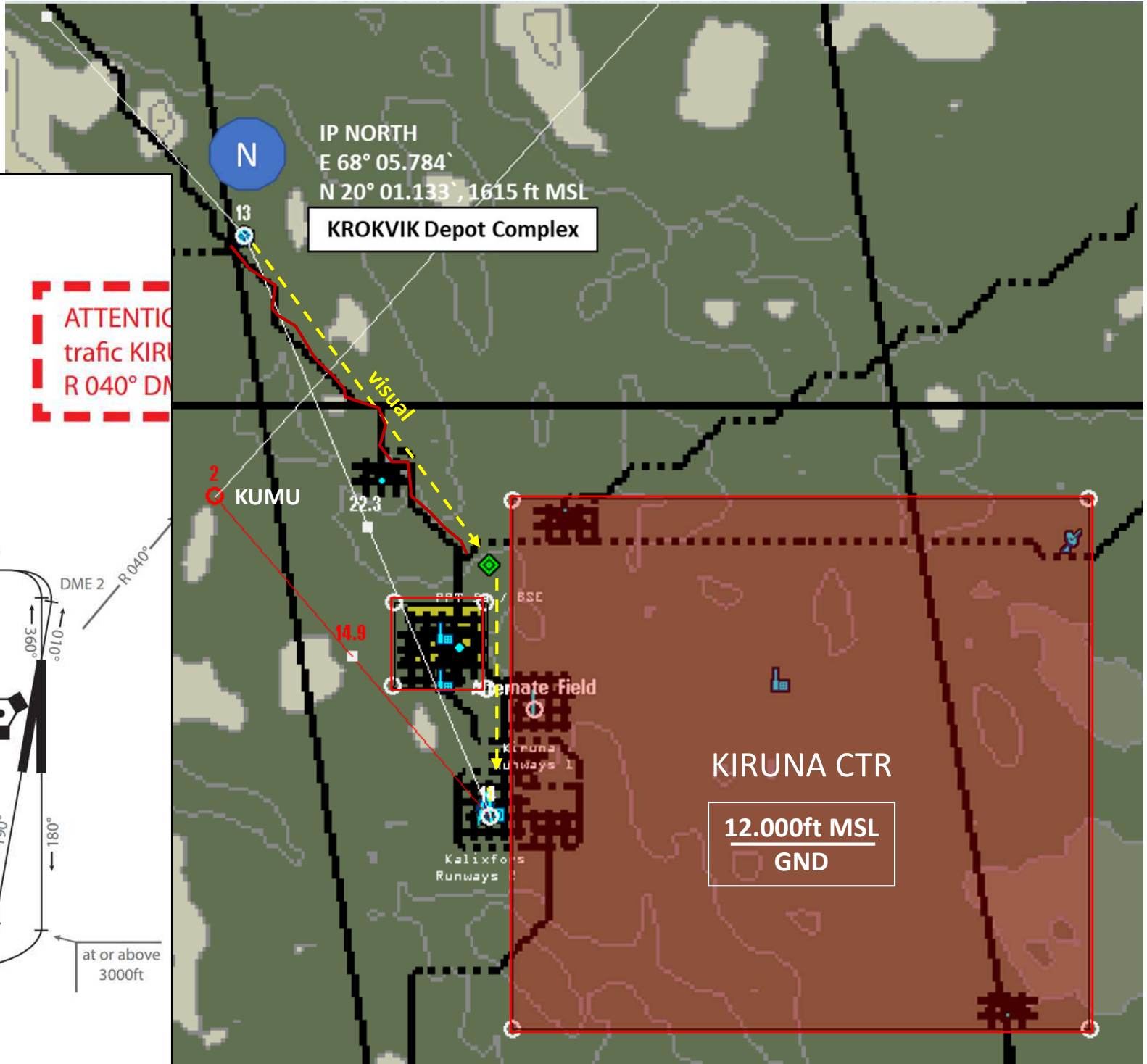


UNCLAS

LANGNES	047 X	25	110.90 (01) 109.90 (19)	—	118.30	01 / 19	0	N 69° 40.822' E 19° 56.806'
---------	-------	----	-------------------------	---	--------	---------	---	-----------------------------



TO - ARR Guidelines

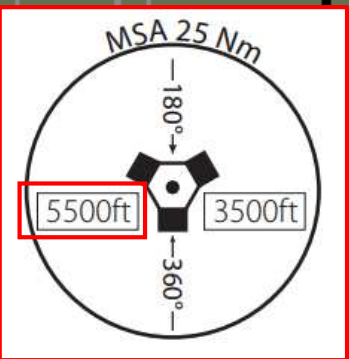
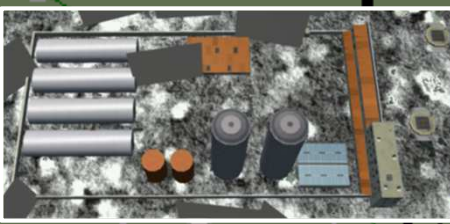




N

IP NORTH
E 68° 05.784`
N 20° 01.133`, 1615 ft MSL

KROKVIK Depot Complex



Flight Level IP N, IP S:
1500 ft AGL

KROKVIK Rafining

Follow street: 140°, approx. 14 nm
pass KROKVIK east, turn right to final...

KROKVIK

ESRANGE

KARUNA CCC

KARUNA
Main Plant
KARUNA City

10 nm

KARUNA
Factory

KIRUNA AB

KARUNA Power Plant

**KIRUNA CTR
(prohibited area)**

18 nm

KALIXFORS AB

JUNOSUANTO

18 nm

- Call Tower:
 - „request visual via IP N/S, 5 min prior“
 - 1500 ft AGL (aprox 3200ft MSL), 300 kts
 - close trail (spacing 1000 ft) for „Overhead“
- „Missed Approach“ - Grundsatz:
- „Nach einem Go-Around bleibt man „Visual“!
- 2 nm geradeaus, max. 1000ft AGL
 - Heading WEST (270°), 5 nm
 - Back to IP
 - Climb to 3200 ft MSL
 - „Call tower....“

K
A
L
I
X
F
O
R
S

V
I
S
U
A
L

Heading North,
approx. 14 nm

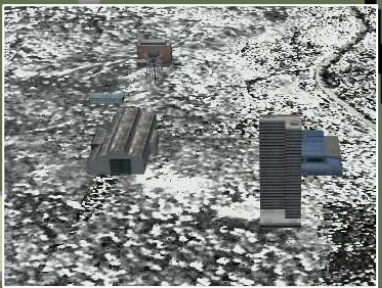
IP SOUTH
N 67° 31.385`
E 20° 08.871`, 1617 ft MSL

KILLINKI

S

RENSJON

KALIXFORS (ESUK) SWEDEN VISUAL



TCN	ATIS VHF	GND UHF	TWR UHF	APR/DEP UHF	TA / TL [ft] UHF	GPS	ELEV
014Y	130.750	319.270	290.350	327.475	14000/FL140	N 67°45,938' E 020°16,628'	1630ft



ROSTER 07.04.20

Package 1546 (F-16CM-52) – Training, TO: 0500Z KALIXFORS AB

Gamble1 (SWEEP -TIMBER): Stingray, Caesar, Kiwi, Anvil

Hawkeye1 (SEAD): Sneakpeek, Opasi, Slick, Freelancer

Plasma1 (Strike1): Cupra, BadCrow

Warhawk1 (Strike2): Dro16, Bluebird, TheWitch

Cyborg1 (Trainee): **Hunter, Actros, RoLan, Joe. Unterstützung: Joker**