

Flight-Training 2020-07-21
„Pop Up“
 -Gedachter Verlauf

Package 2 (US) - OCA-Strike OULU Air Base

TO/AAR: KALIXFORS AB
19:30Z – approx. 21:00Z



Flight-Path OCA-Strike:

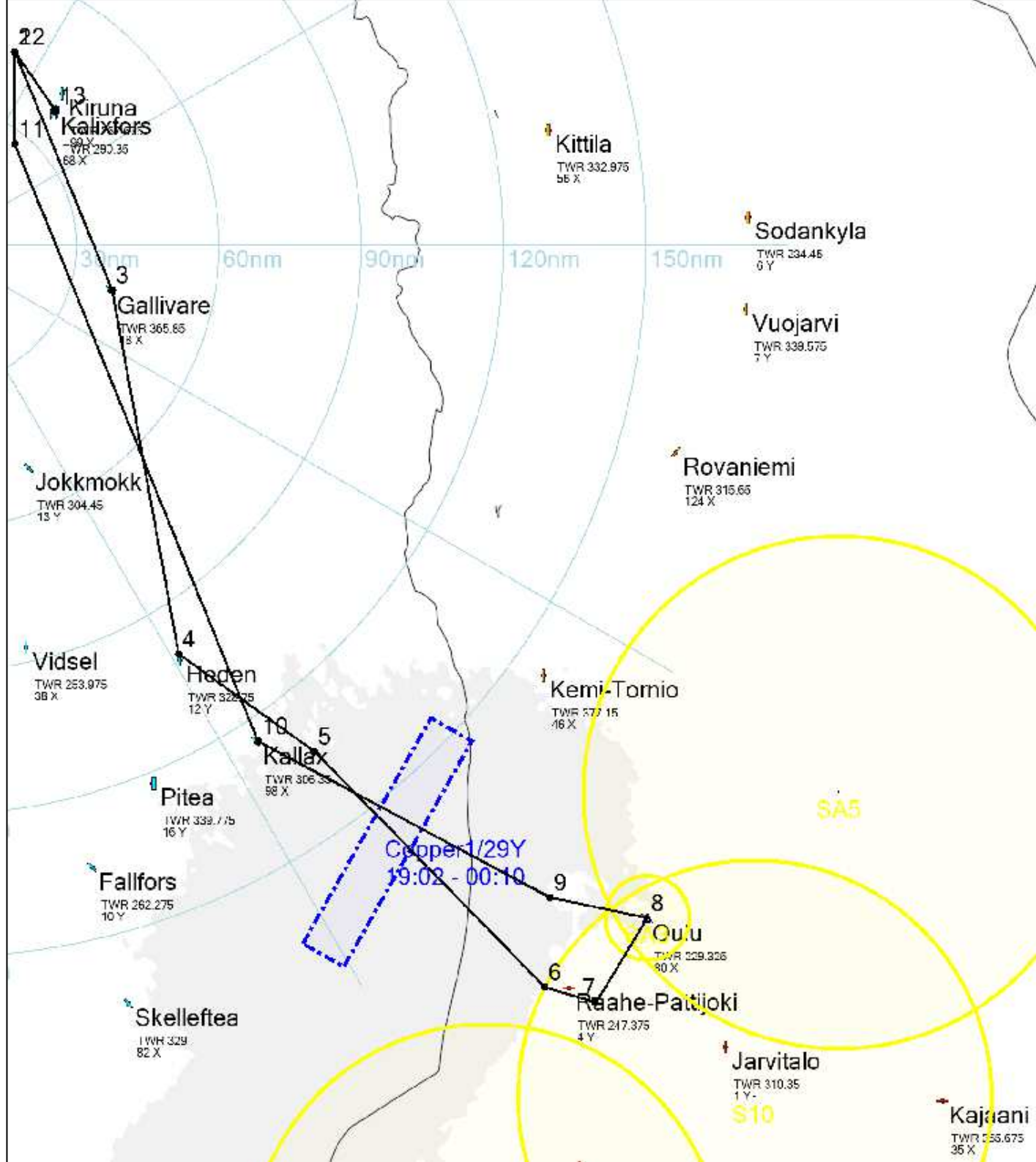
- WP1: Homeplate
- WP2: IAF KUMU
- WP3: NAV GALLIVARE AB
- WP4: NAV HEDEN AB (2001st HQBtl)
- WP5: NAV LULEA PORT: feet wet, check TOS-Time
- WP6: NAV (feet dry, sollte die SA-10 nicht bekämpft werden können, wird der WP9 = Einflugpunkt sein.)
- WP7: IP
- WP8: Target WP9: OUT
- WP10: NAV KALLAX AB = nearest landing field, approx. 90 nm NW
- WP11: NAV
- WP12: IAF KUMU – ILS-Approach Rwy. 18
- WP13: Homeplate
- „No Alternate“ (nearest Landing-Field: KIRUNA AB)

Weather-Forecast:

Situation: FAIR, CAV-OK, BCMNG POOR (OVC, VIS=AMB, <1.6nm, approx. 20:30Z)
Wind: 210°, 10-15 kts
Temp: 12° C
Clouds: 2/8, 10.000-15.000 ft, AO=Clear
Sunrise: -Midsummer-

Zeiten zur Koordinierung:

- | | |
|---|---------------|
| 1. Schuss DEAD: | 20:05Z |
| 2. Einflug Vorauskräfte „SA-3“ (Mudhen6): | 20:11Z |
| 3. TOT: Vorauskräfte „SA-3“: | 20:15Z |
| 4. Einflug OCA-Hauptkräfte (WP6): | 20:13Z |
| 5. TOT: OCA-Hauptkräfte (WP8): | 20:17Z |
| 6. „OUT“ (RTB) aller Teile: | 20:20Z |

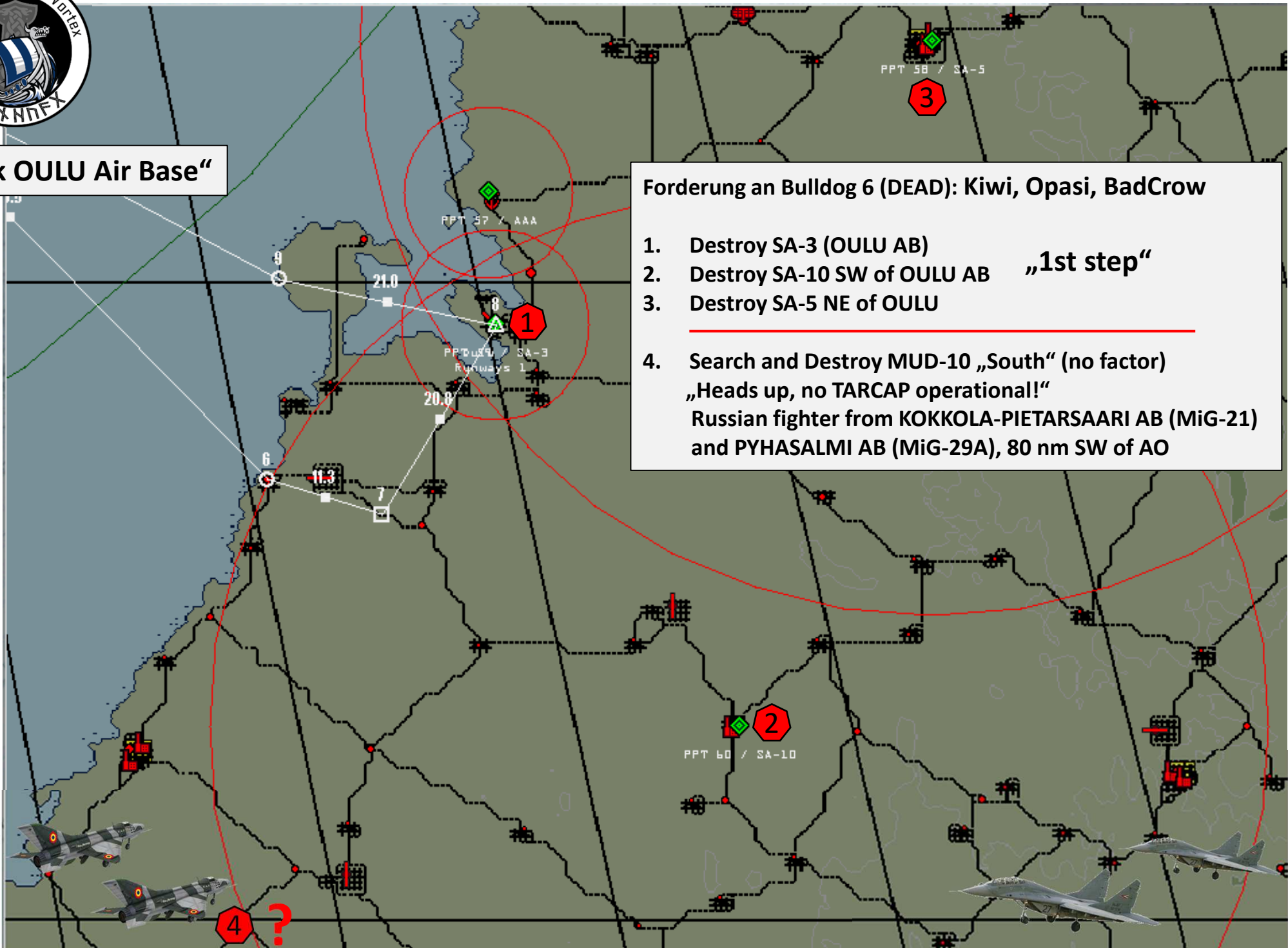




„Attack OULU Air Base“

F
L
I
G
H
T
-
T
R
A
I
N
I
N
G

21.07.20



- Forderung an Bulldog 6 (DEAD): Kiwi, Opasi, BadCrow
1. Destroy SA-3 (OULU AB)
 2. Destroy SA-10 SW of OULU AB „1st step“
 3. Destroy SA-5 NE of OULU
-
4. Search and Destroy MUD-10 „South“ (no factor)
„Heads up, no TARCAP operational!“
Russian fighter from KOKKOLA-PIETARSAARI AB (MiG-21)
and PYHASALMI AB (MiG-29A), 80 nm SW of AO



„Attack OULU Air Base“



T STPT # 1 ACCEPT TARGETS STPTs CLEAR CLEA

TARGET	CONDITION	VALUE
KrAz T 255B	No damage	Very high
KrAz T 255B	No damage	Very high
KrAz T 255B	No damage	Very high
KrAz T 255B	No damage	Very high
Flat Face	No damage	Very high
SA-16 (9K310)	No damage	Very high

Mudhen 6: Cupra, Bluebird „2nd step“

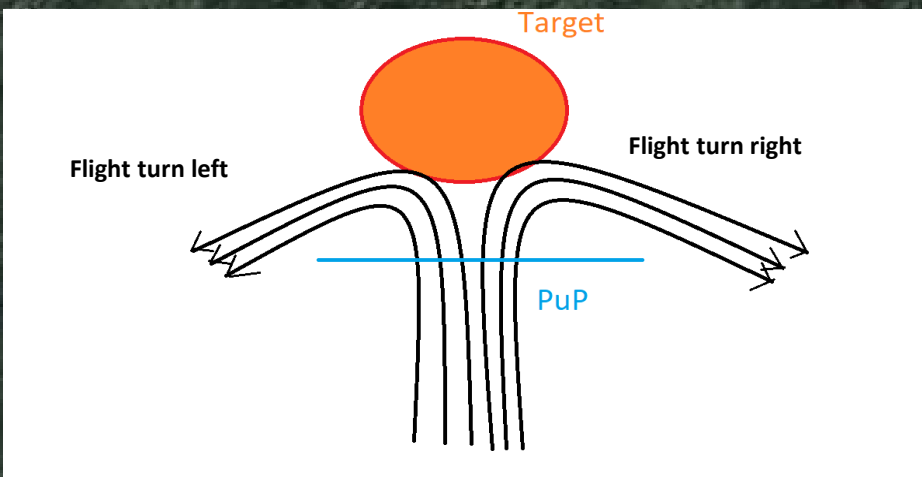
„Destroy ZPU-2 and SA-16 south of Runway!“

Bei freier Kapazität „Target No. 3“ (ANNEX 3)

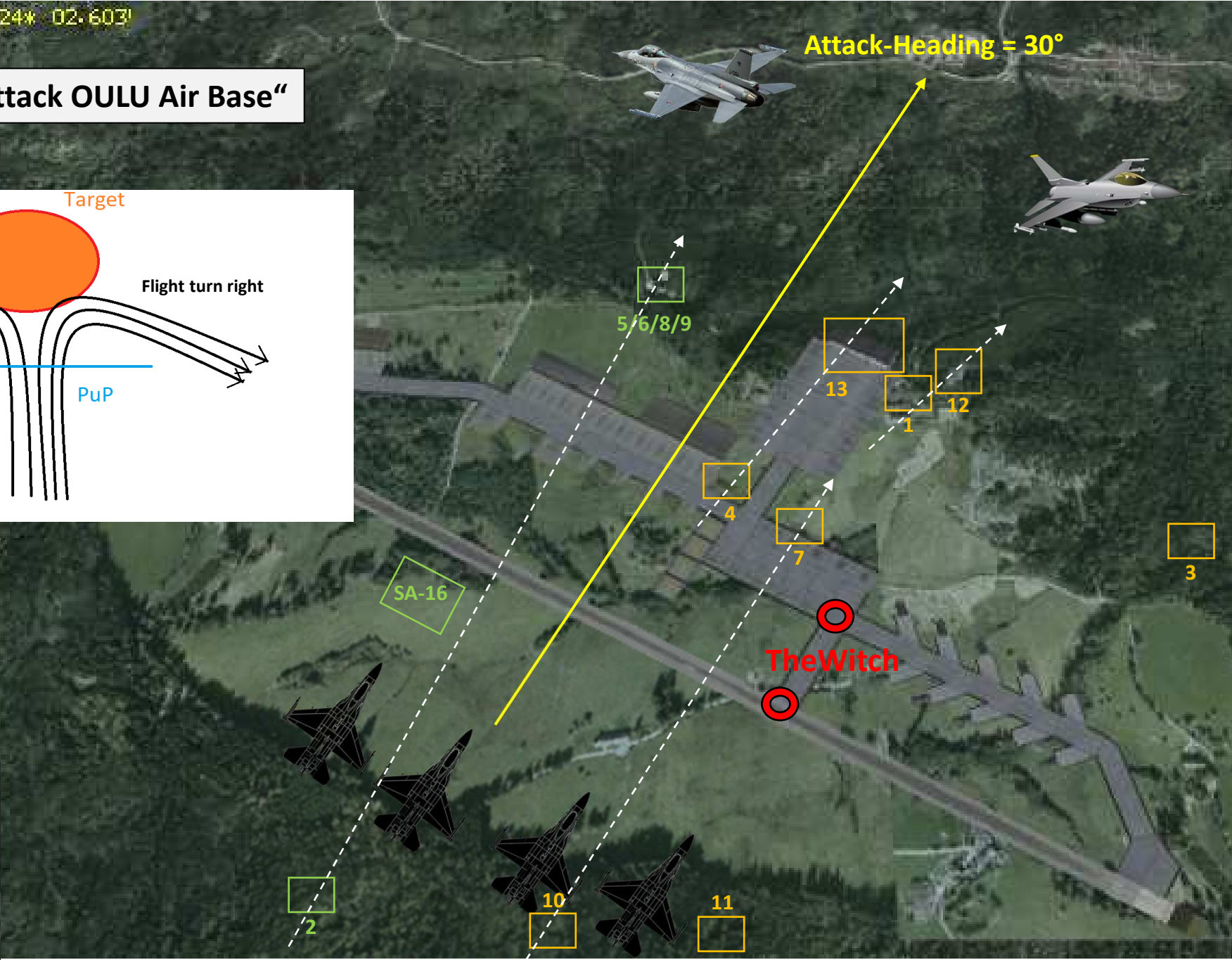
ZPU-2	No damage	Very high
ZPU-2	No damage	Very high
ZPU-2	No damage	Very high



„Attack OULU Air Base“



- TARGET
- Oulu
 - 1 Warehouse
 - Runway Long Section
 - Runway Section
 - Runway Section
 - 2 Radar EW & SSR
 - 3 Radar EWR
 - 4 Ammo Dump
 - 5 Fuel Tank
 - 6 Fuel Tank
 - 7 Control Tower
 - 8 Fuel Depot
 - 9 Fuel Depot
 - 10 Radio Tower
 - 11 Radio Tower Tall
 - 12 Admin Building
 - Runway Threshold
 - Runway Threshold
 - 13 Hangar



„3rd step“ Panther 4 (left):
Jackal 4 (right):

Hunter, Actros, **Joker (Target No. 2, 5/6/8/9 and 4, 13)**
Dro16, Yankee, **TheWitch (Target No. 10, 7 and 1, 12)**