

Mission-Order

Training: 271930Aoct20



Schwerpunkte:

1. Banshee7, DEAD: „SOUTH“

- „Kampf gegen das System „Gadfly“.
- SP: Taktik/Waffenwahl/Teamwork

2. Mustang5, Escort:

- Sicherung Banshee7 gegen MiG-21, MiG-23

3. Plasma5, Spade2, Strike: „EAST“

- Tempor. Lähmung BARDUFOSS AB
- S&D „Moving Targets“

4. Jackal 7, BARCAP: „NORTH“

- Kampf gegen MiG-21/23/29A,
- Einsatz Gun gegen Tu-16, A-50
- Teamwork

All:

- Abfrage AWACS nach „Pictures“, Eintrag der Meldungen in die Bullseye-Karte, s. Anlage (Situation Awareness)
- „Go Around“ KALIXFORS AB

Page 1	DATACARD
ATIS Military	ENBO INFO: B 010625LT ILS RWY26 TRL85 270/20KT RED 14/4 Q1009 NOSIG

	Airbase	TCN	GND	APP	Ev	RWY	ILS
Airbase	DEP	Bodo	45 X	290.75	364.92	20	108.70
	ARR	Kalixfors	68 X	319.27	327.47	1546	109.00
	ALTN				0		---

	Callsign Pack	Aircraft Type	UHF	VHF	IDM	TCN	Task
Package	○ Plasma 5	3 F-16CM-52	282.175	140.475	XMT 10	12Y	STRIKE
	○ Spade 2	3 F-16CM-52	286.800	141.775	XMT 20	13Y	STRIKE
	○ Banshee 7	4 F-16CM-52	365.025	138.950	XMT 30	14Y	DEAD
	● Jackal 7	2 F-16CM-52	267.650	140.275	XMT 40	15Y	BARCAP
	○ Mustang 5	2 F-16CM-52	329.400	140.150	XMT 50	16Y	ESCORT

Intel
Ground threats: SA-11 (9K37M1), SA-2 (S-75), SA-6 (2K12)
Bombers: Tu-16
Support: A-50, Tu-16N

WEATHER:			
Conditions @	TAKE OFF:	TARGET AREA:	LANDING:
SITUATION:	Fair	Fair	Fair
WIND:	270 deg @ 24 kts.	270 deg @ 24 kts.	270 deg @ 24 kts.
TEMP:	14 deg C.	14 deg C.	14 deg C.
CLOUD BASE:	5,000 ft MSL base	5,000 ft MSL base	5,000 ft MSL base
CON LAYER:	25,000 ft MSL base	25,000 ft MSL base	25,000 ft MSL base
SUPPORT:			
CALLSIGN:		STATION AREA:	
Sentry2 (AWACS):	1 E-3	Friendly AWACS aircraft will be operating 71 nm west of Karuna. Available for air detection and warning.	
Sentry2 (JSTAR):	1 E-3	Friendly JSTAR aircraft will be operating 71 nm west of Karuna. Available for ground movement queries.	



Package Assets



Package 2, F-16CM-52, TO: 0730Z
BODD/NOR

„ARCTIC CIRCLE – „TRAINING“

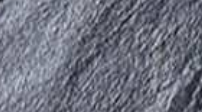
DTG: 271930Z OCT 20



Missing In Action (MIA)

- Not in Operation (temporary)*
- Col Stingray
 - Capt Caesar
 - LtCol Toschi
 - Maj Yankee
 - LtCol Bflat
 - Maj Slick
 - LtCol Joker
 - 2nd Lt Anvil
 - 2nd Lt McFly
 - 2nd Lt Joe
 - 2nd Lt Skipper

CALLSIGN	TASK	#1	#2	#3	#4
PLASMA 5	STRIKE	Capt Cupra	Maj Numsi		
SPADE 2	STRIKE	LtCol TheWitch	2nd Lt Actros	LtCol Bluebird	
BANSHEE 7	DEAD	Capt Kiwi	Capt Opasi	Maj Sneakpeek	
JACKAL 7	BARCAP	BrigGen Dro16	BrigGen Hunter		
MUSTANG 5	ESCORT	LtCol BadCrow	Maj Dagger		
CAJUN 6	TRAINING				



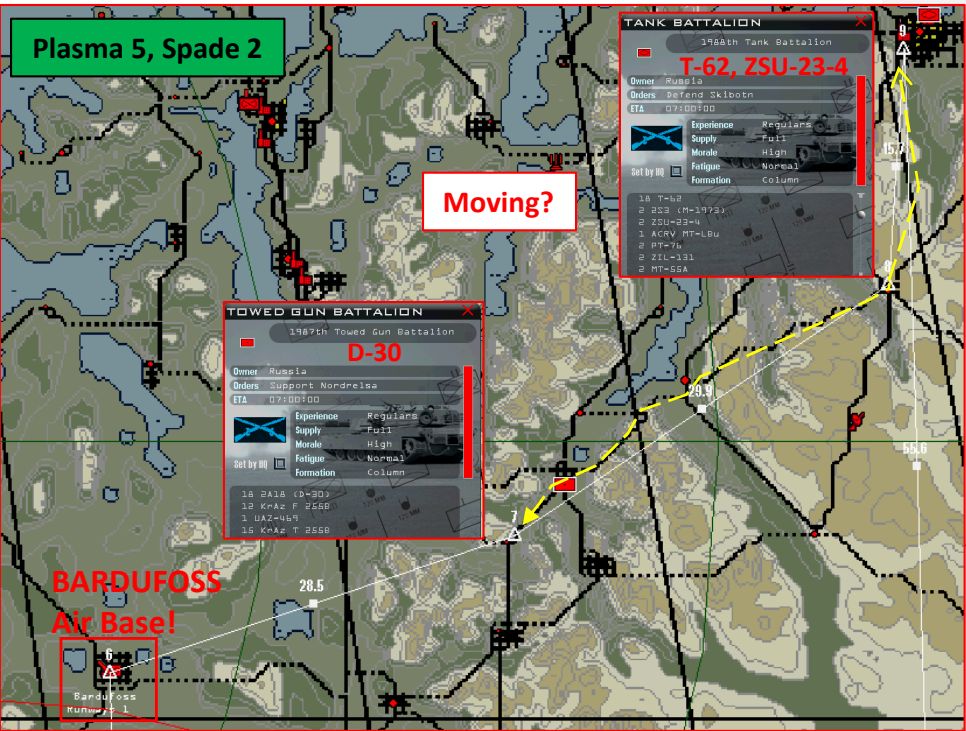
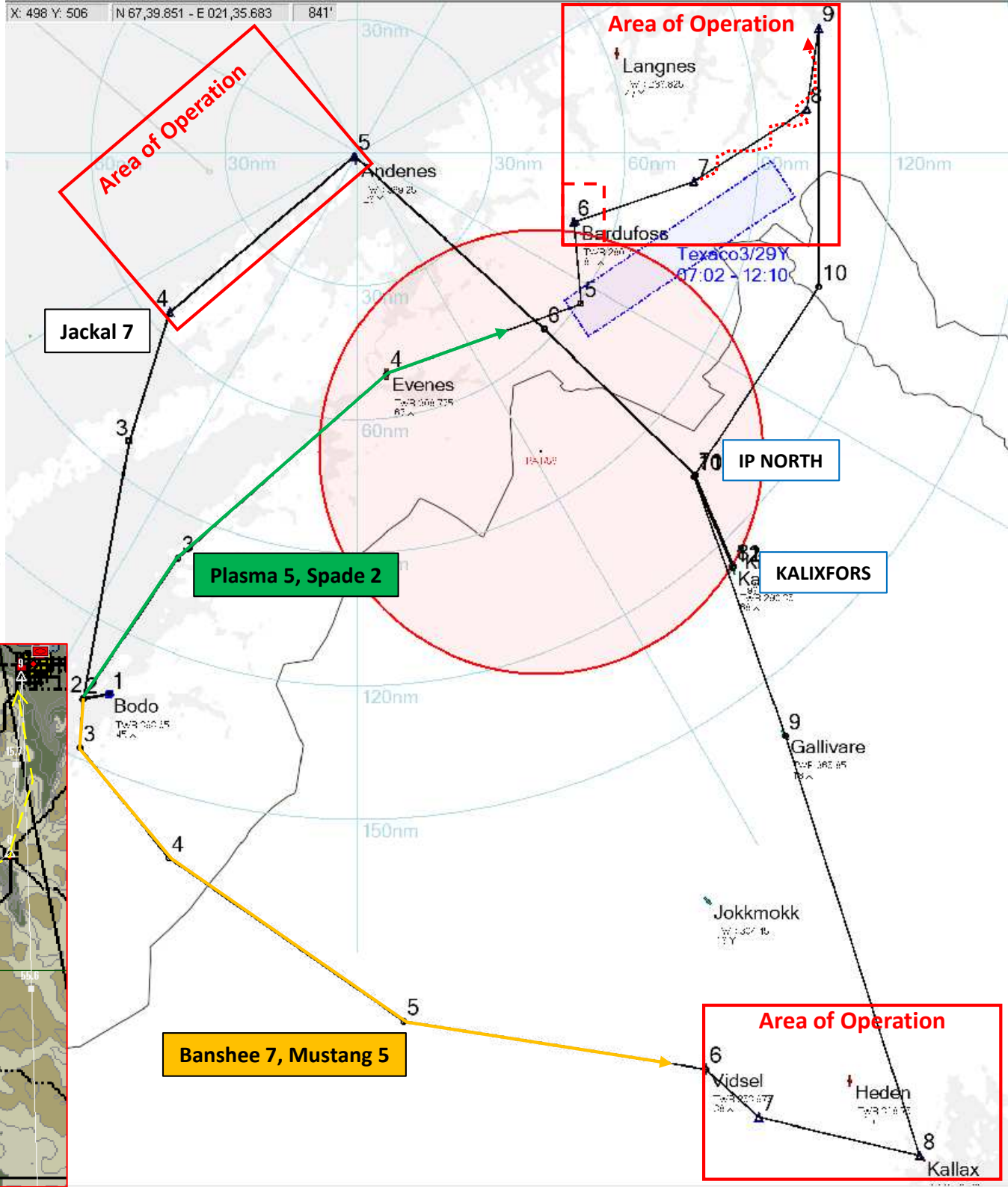
Mission-Order

Training: 271930Aoct20



TO: BODÖ AB/NOR – 07:30Z
 ARR: KALIXFORS AB/SWE – approx. 08:45Z

- TO/ARR via KI-ATC/Tower
- visual Approach via IP „N“
- once go around procedures KALIXFORS AB

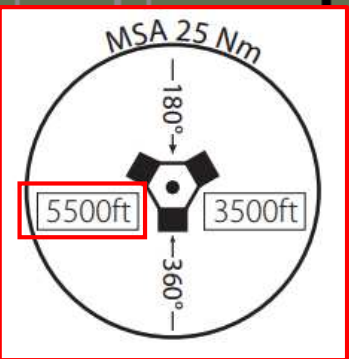
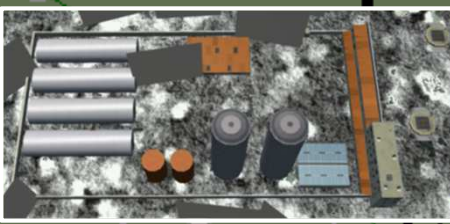




N

IP NORTH
E 68° 05.784`
N 20° 01.133`, 3200 ft MSL

KROKVIK Depot Complex



Flight Level IP N, IP S:
1500 ft AGL

KROKVIK Rafining

Follow street: 140°, approx. 14 nm
pass KROKVIK east, turn right to final...

KROKVIK

KARUNA
Main Plant
KARUNA City
KARUNA
Factory

10 nm

ESRANGE

KARUNA CCC

KIRUNA AB

KARUNA Power Plant

**KIRUNA CTR
(prohibited area)**

18 nm

KALIXFORS AB

JUNOSUANTO

18 nm

Heading North,
approx. 14 nm

IP SOUTH
N 67° 31.385`
E 20° 08.871`, 3200 ft MSL (1500 ft AGL)

KILLINKI

S

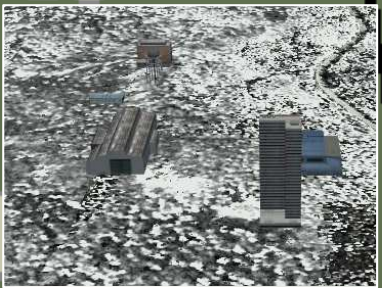
RENSJON

KALIXFORS (ESUK) SWEDEN VISUAL

- Call Tower:
 - „request visual via IP N/S, 5 min prior“
 - 1500 ft AGL (aprox 3200ft MSL), 300 kts
 - close trail (spacing 1000 ft) for „Overhead“
- „Missed Approach“ - Grundsatz:
- „Nach einem Go-Around bleibt man „Visual“!
- 2 nm geradeaus, max. 1000ft AGL
 - Heading WEST (270°), 5 nm
 - Back to IP
 - Climb to 3200 ft MSL
 - „Call tower....“

K
A
L
I
X
F
O
R
S

V
I
S
U
A
L



TCN	ATIS VHF	GND UHF	TWR UHF	APR/DEP UHF	TA / TL [ft] UHF	GPS	ELEV
014Y	130.750	319.270	290.350	327.475	14000/FL140	N 67°45,938' E 020°16,628'	1630ft

