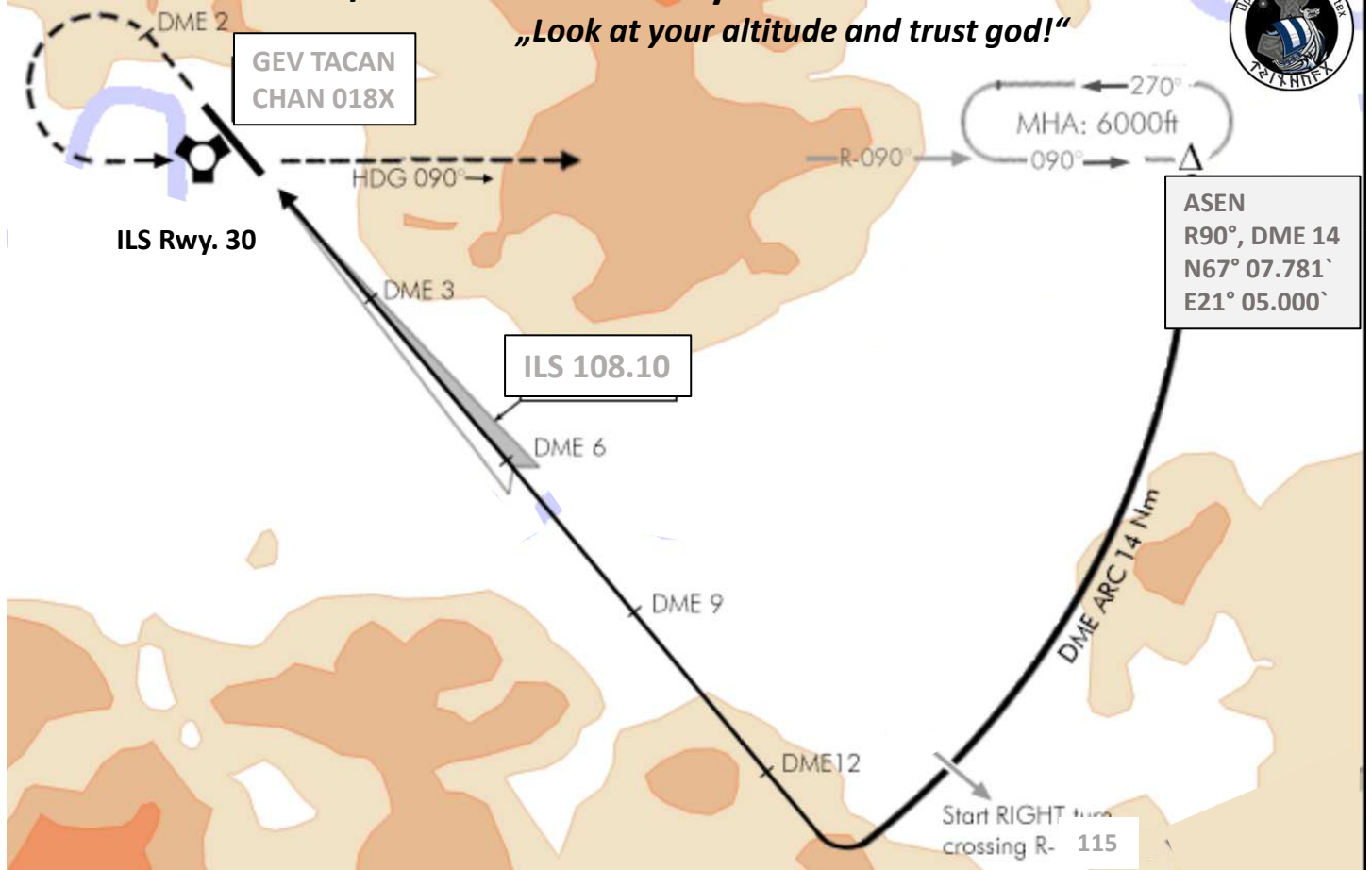


**GALLIVARE Air Base/SWE**

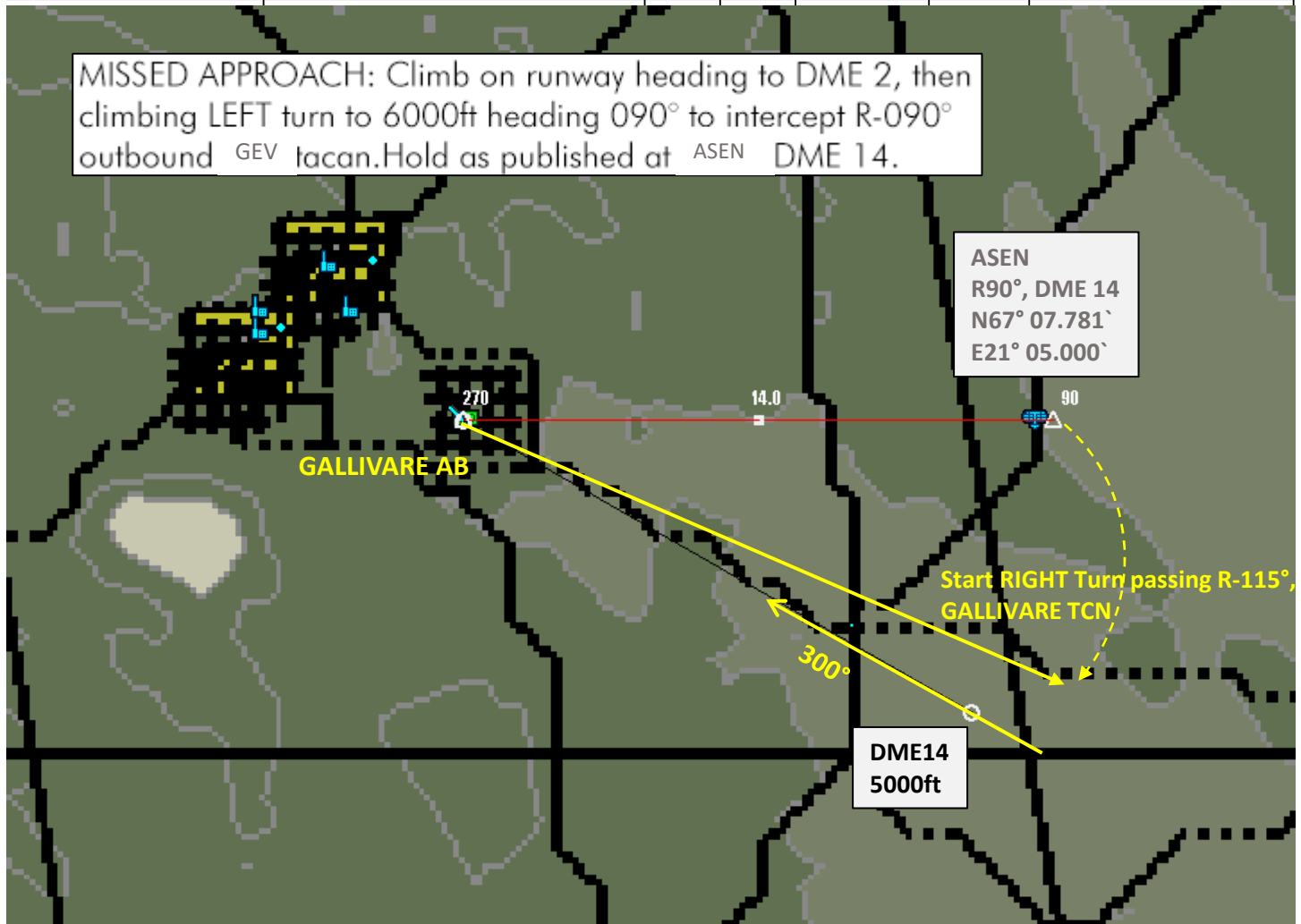
**TEST – only theoretical values!**

„Look at your altitude and trust god!“



GALLIVARE	018 X	25	108.10 (30)	—	122.20	12 / 30	1,020	N 67° 07.790' E 20° 29.496'
-----------	-------	----	-------------	---	--------	---------	-------	-----------------------------

MISSED APPROACH: Climb on runway heading to DME 2, then climbing LEFT turn to 6000ft heading 090° to intercept R-090° outbound GEV tacan. Hold as published at ASEN DME 14.



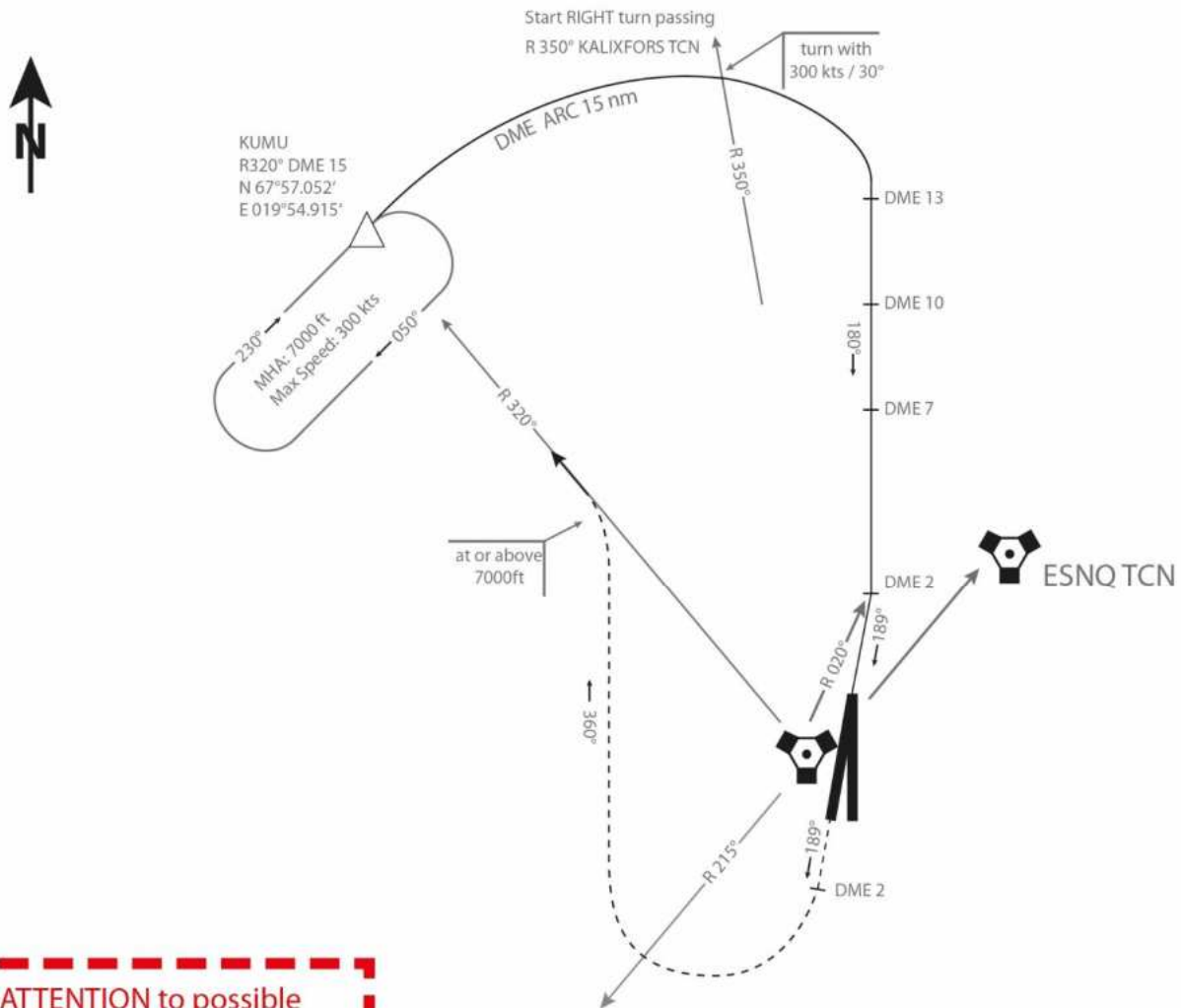
TCN RWY 19

Date: 23 Mar 2020

TCN	ATIS VHF	GND UHF	TWR UHF	APR/DEP UHF	TA / TL [ft] UHF	GPS	ELEV
068X	130.750	319.275	290.350	327.475	14000/FL140	N 67°45,938' E 020°16,628'	1630ft

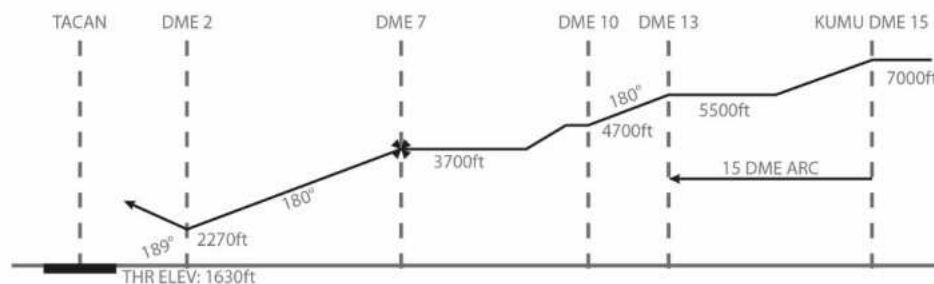


MISSED APPROACH: Climb on heading until DME 2, then immediately RIGHT climbing turn track 360°. Intercept R 320° outbound at or above 7000ft KALIXFORS TCN. Hold at KUMU as published.



**ATTENTION** to possible traffic KIRUNA (ESNQ)  
R 040° DME 4

Transition Level : FL 140 - Transition Altitude : 14000ft



**MINIMA**

TACAN: 2270ft (760 AGL)  
VIS: 500ft - 1600m\*  
at DME 2

Circling: 2470ft (960 AGL)  
VIS: 1000ft - 2000m\*

\*When ALS inop. increase vis to 2000m

TCN RWY 19

by A. „Keule“ R.