

Campaign

Operation „Rolling Fire“

Day 3, 05:31LT



SITUATION

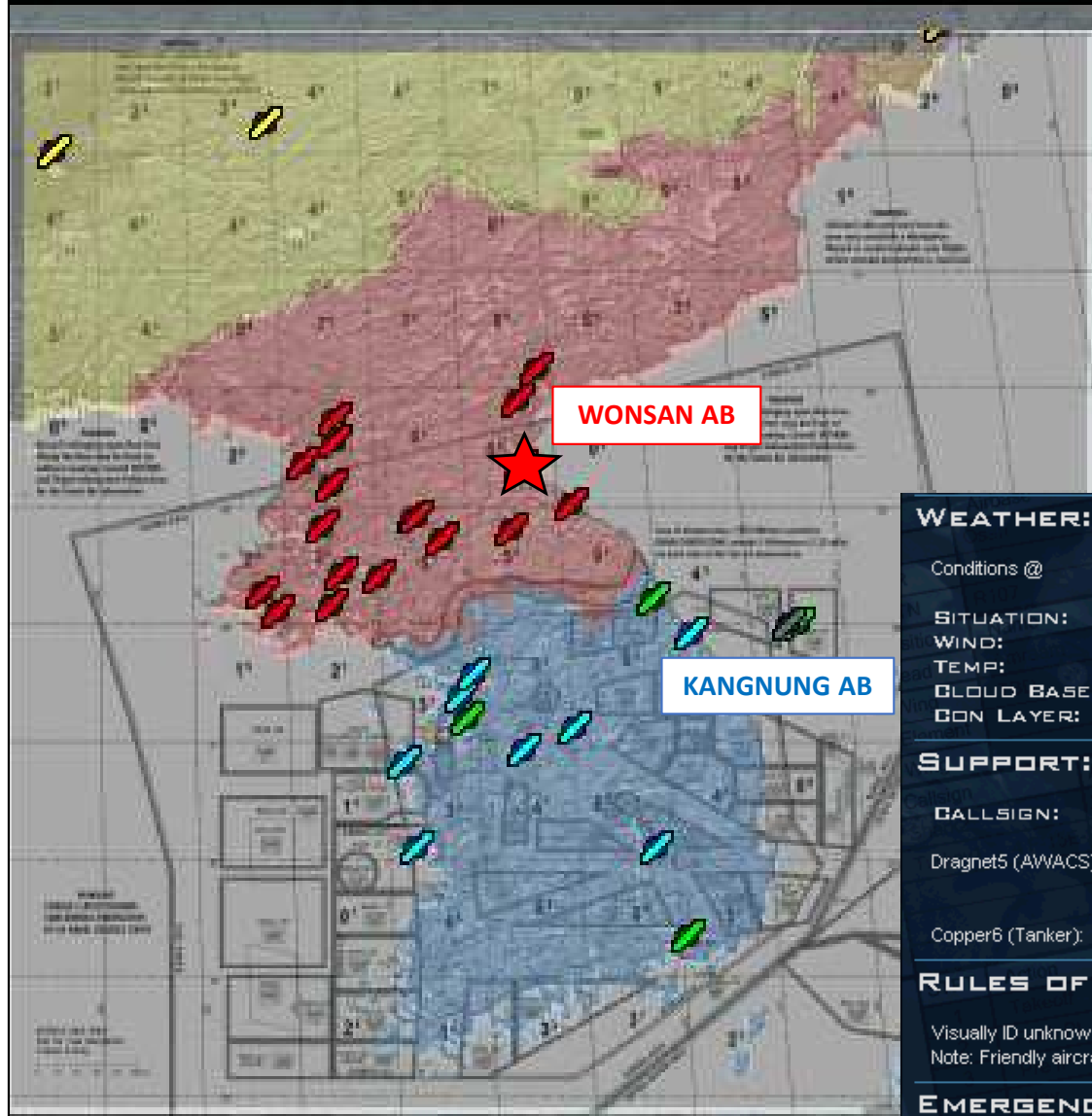
Fluid

US/ROK forces occupy P'yongyang and Wonsan, in an effort to remove the North Korean dictatorship.

DPRK and PRC forces are massing for a counter-attack.

Mission Order: „Destroy WONSAN Air Base“

KAMPI DIENSTAG



Kangnung Airbase

35th FS

20 F-16CM-40

Air-to-ground

Вил-16-ВЛОНУК
ТО-1-10000-100

WEATHER:

Conditions @	TAKE OFF:	TARGET AREA:	LANDING:
SITUATION:	Sunny	Sunny	Sunny
WIND:	12 deg @ 0 kts.	12 deg @ 0 kts.	12 deg @ 0 kts.
TEMP:	13 deg C.	13 deg C.	13 deg C.
CLOUD BASE:	35,000 ft MSL base	35,000 ft MSL base	35,000 ft MSL base
CON LAYER:	34,000 ft MSL base	34,000 ft MSL base	34,000 ft MSL base

SUPPORT:

CALLSIGN:	STATION AREA:
Dragnet5 (AWACS): 1 E-2C	Friendly AWACS aircraft will be operating 14 nm southeast of Samch'ok. Available for air detection and warning.
Copper6 (Tanker): 1 KC-135R	Friendly tankers will be operating 20 nm west of Samch'ok. Available for mid-air refueling.

RULES OF ENGAGEMENT:

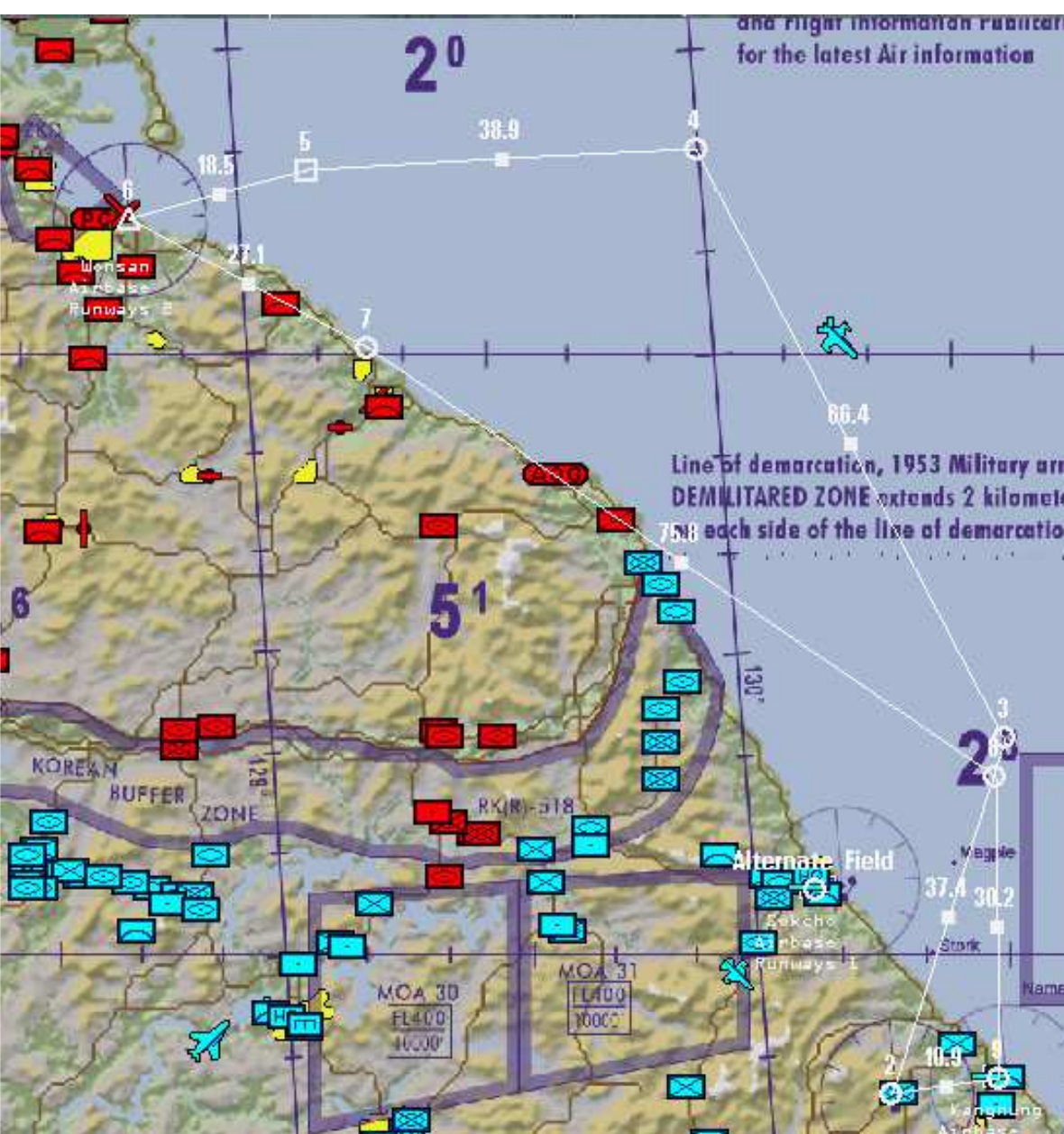
Visually ID unknown aircraft before engaging, unless authorized by AWACS.
 Note: Friendly aircraft may be operating in the area.

EMERGENCY PROCEDURES:

DISTRESS CALL:
 For aircrew in a hostile area, prior to ejection, transmit on the working frequency: "MAYDAY" (three times); call-sign; and position in relation to BULLSEYE.

COMBAT SEARCH AND RESCUE:
 SAR helos are available within 30 km of FLOT. In case of shoot-down, mark closest coordinates of the survivor's position and report the incident to the CSAR assets. Establish radio communication with survivor and execute the On Scene Commander procedures.

ALTERNATE AIRFIELD:
 Sokcho Airbase, 50 nm northwest of Samch'ok



- PKG 2106 - OCA STRIKE TOT 06:59

OCA STRIKE	Banshee4	T/O 06:31
4 F-16CM-40	"35th Fighter Squadron"	
Kangnung Airbase		
Comms: UHF-248.000Mhz VHF-138.350Mhz		
SEAD	Hammer1	T/O 06:31
4 F-16CM-40	"80th Fighter Squadron"	
Kangnung Airbase		
Comms: UHF-248.000Mhz VHF-141.300Mhz		
TARCAP	Mudhen4	T/O 06:31
4 F-16CM-50	"14th Fighter Squadron"	
Kangnung Airbase		
Comms: UHF-248.000Mhz VHF-143.900Mhz		

Banshee4 (OCA): Cupra, Actros, Joe, Bluebird

Hammer1 (SEAD): Anvil, Corran, Opasi, **Yankee**

Mudhen4 (TARCAP): Dro16, **Joker, Hunter, Sneakpeek**

TO/ARR: KANGNUNG AB 06:31LOC

ALTERNATE: SOKCHO AB

Offen: Hunter, Joker, Numsi, Slick, Sneakpeek, Yankee

Flugweg Banshee4 (OCA-Strike), Verlegung WP7 auf's Meer hinaus um möglicher Bedrohung über dem Festland zu entgehen!

Flugweg Hammer1 und Mudhen1 identisch, kann aber für die Aufgabenstellung verlegt werden. An- und Abflug über das Meer sind aber Vorgabe!

*Teile A2A-Training: **Stingray, Caesar, BadCrow, Kiwi**

Ggf. Ergänzung der Fightergruppe durch **Numsi und Slick.**

Threat-Analysis

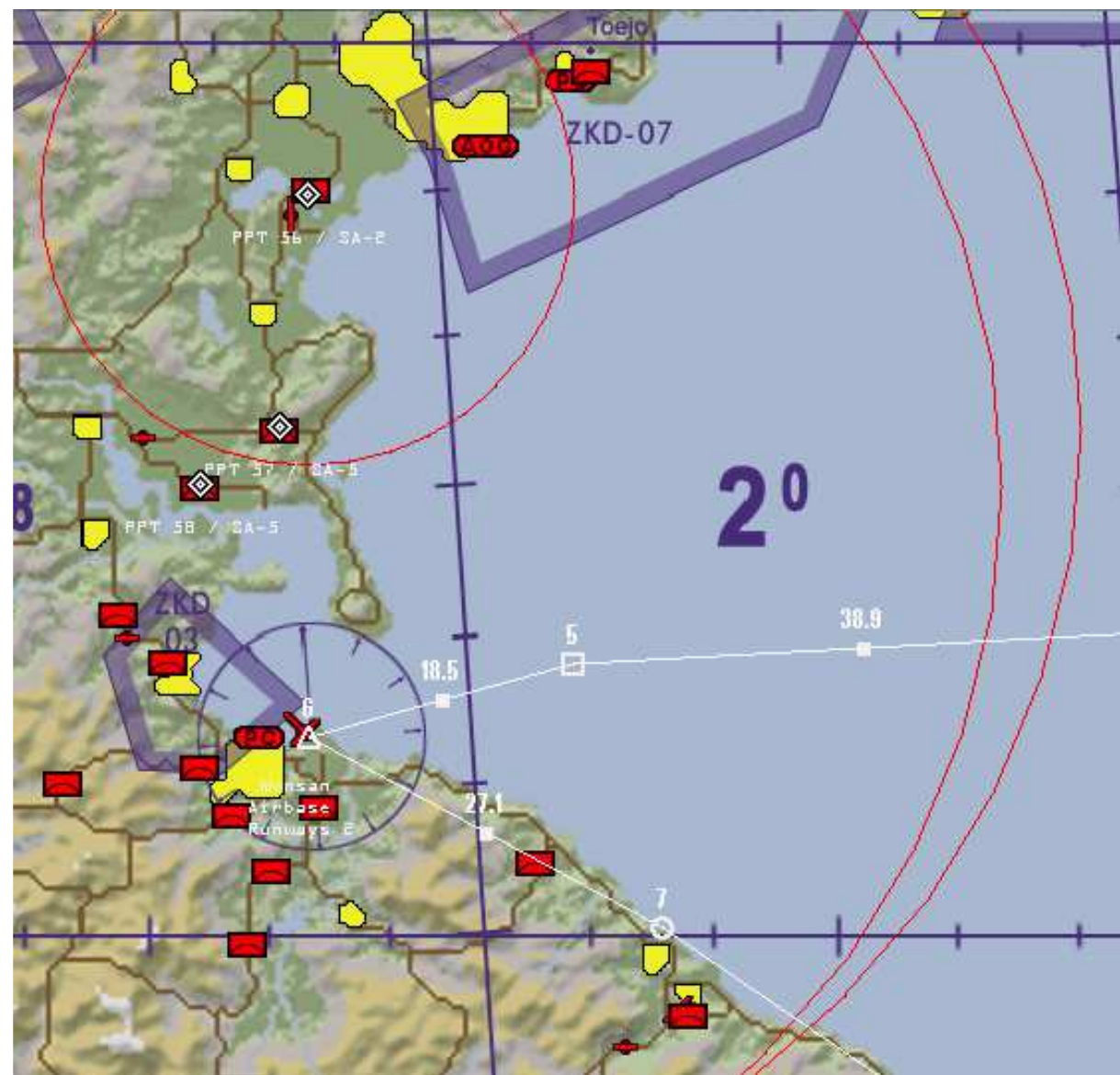


Belegung WONSAN AB

✗	Wonsan Airbase	100% Operational
✗	2nd Fighter Squadron	3 MiG-23ML 33 Pilots 0 Players
✗	35th Attack Squadron	7 Il-28 41 Pilots 0 Players
✗	50th Fighter Squadron	7 MiG-29A 35 Pilots 0 Players
✗	89th Fighter Squadron	18 MiG-19SF 48 Pilots 0 Players
✗	165th Fighter Squadron	11 MiG-23ML 27 Pilots 0 Players
✗	216th Attack Squadron	0 Pilots 0 Players

Weiterer Flugplätze

- KUUM-NI: 0% Operational
- HYON-NI: 0% Operational
- SONDOK, approx. 35 nm N, MiG-27 (Attacker)
- TOKSASN, approx. 50 nm N, MiG-23 (18)



Die SAM-Bedrohungen an der Ostküste sind weitestgehend ausgeschaltet. Einige Systeme verfügen nur noch über ein Aufklärungsradar, MANPAD, AAA und mobile Systeme (SA-4/6/10/11/17) sind aber immer und überall zu erwarten.

Im Nordbereich sind zwei (2) SA-5 Systeme aktiv, wobei eines nur noch mit einem „Square Pair“ ausgestattet ist. Diese sichern das Angriffsziel WONSAN und sind das Primärziel des DEAD! Eine zusätzliche aktuelle Auswertung der SAM-Lage, vor Einsatzbeginn, ist zwingend notwendig!



Main Target – WONSAN Air Base

- Zielverteilung gem. Lead. SP: Runways, Tower, Radar, POL Storage
- Vier Aufhängungen stehen zur Verfügung, Achtung: kein Tanker verfügbar!
- Waffenwahl frei
- Zu beachten:

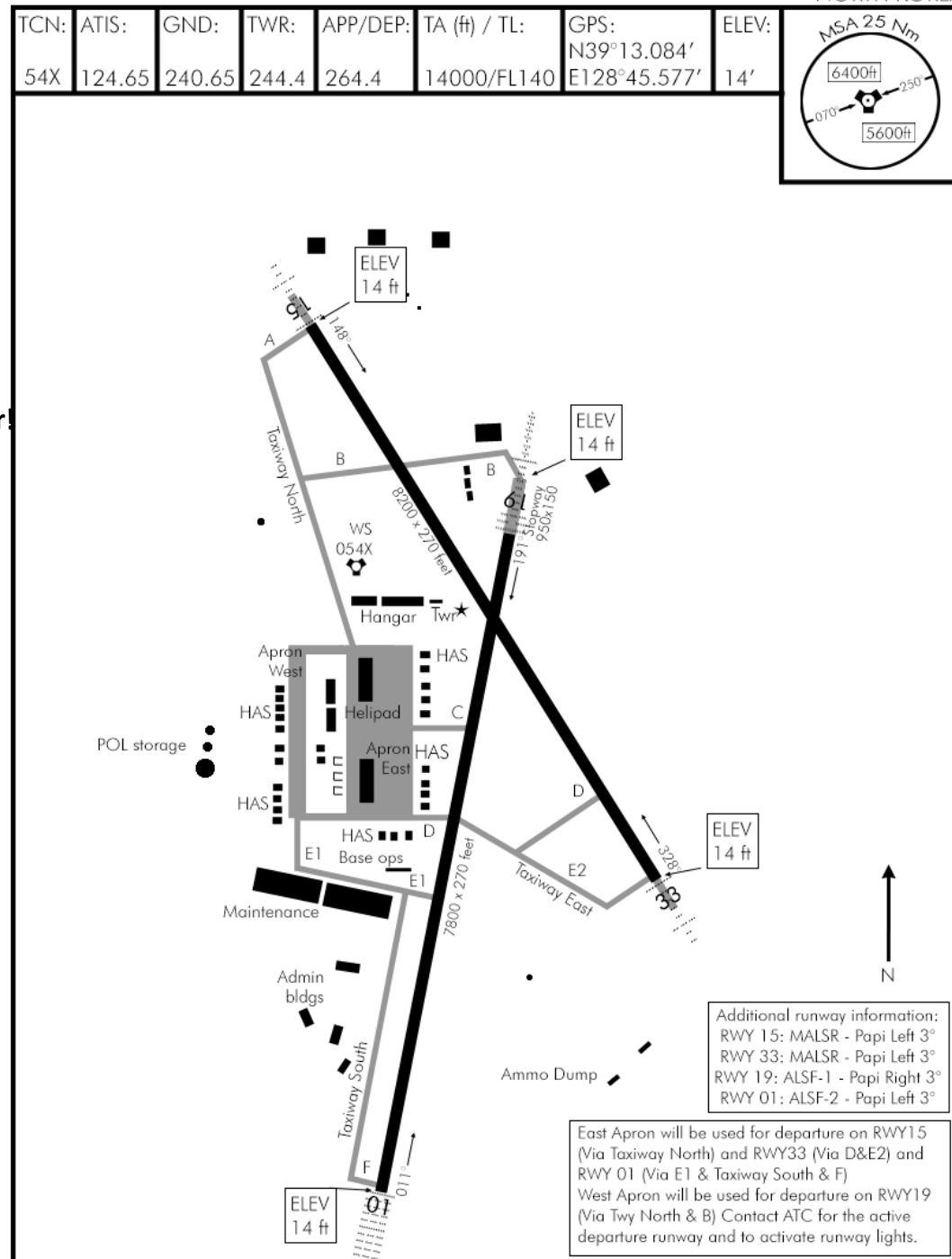
A-G	INV	QTY
GBU-39/B SDB /HE	MED	
AGM-158 JASSM	OUT	
AGM-65A Maverick	OUT	
BB1	OUT	
BDU-33D/B	OUT	
BDU-59/B LGTR	OUT	
BDU-60/B LGTR II	OUT	
LAU-3/A MP3M	OUT	

AIRPORT DIAGRAM

KOREAN NAVIGATION VOLUME

Date: 13 Dec 2018

WONSAN
NORTH KOREA



AIRPORT DIAGRAM

© COMBATSIM CHECKLISTS 2018

WONSAN
NORTH KOREA

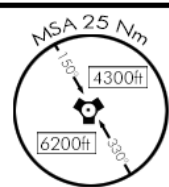
NOT FOR REAL NAVIGATION - FALCON 4 BMS ONLY

AIRPORT DIAGRAM

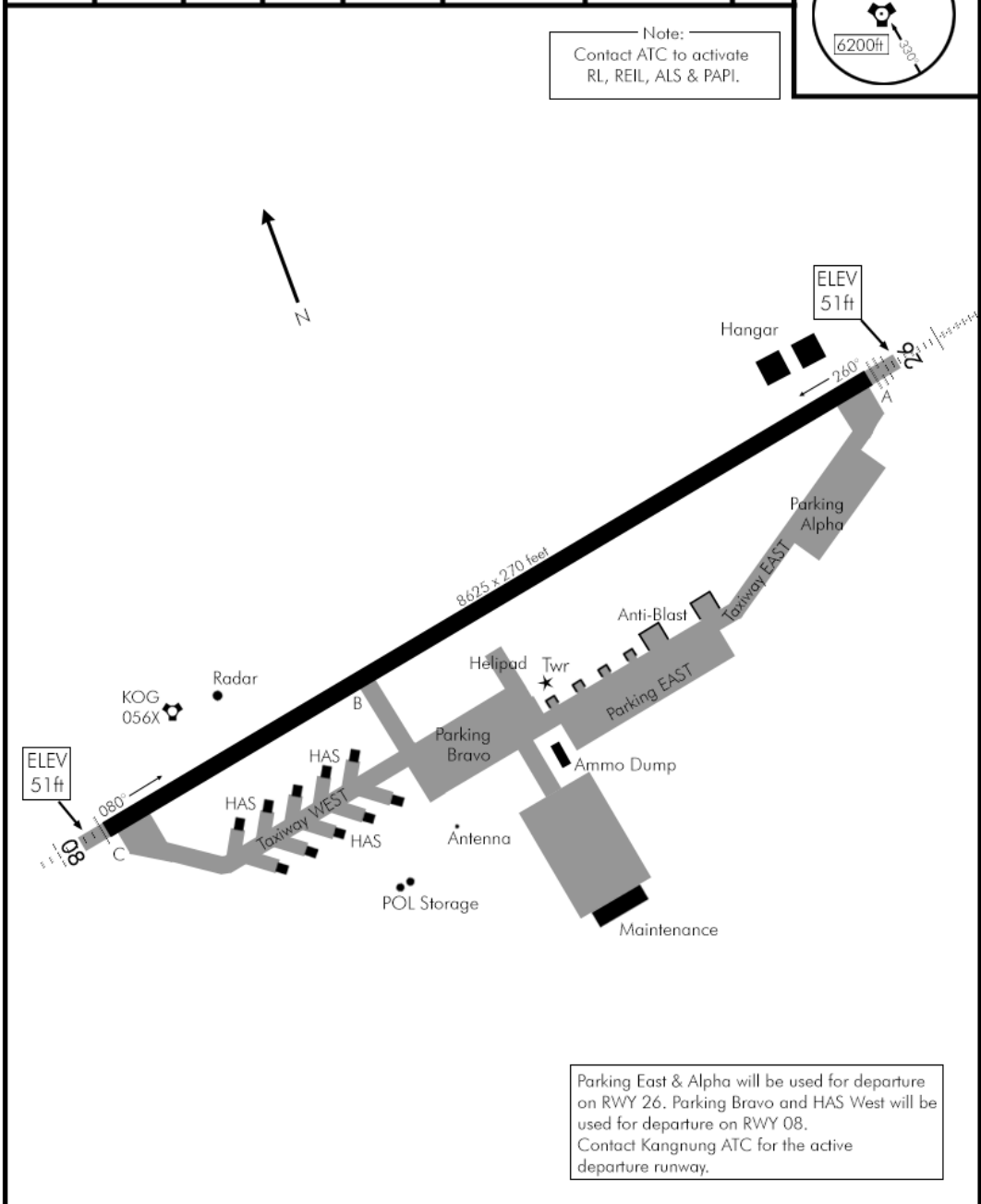
Date: 16 July 2017

KANGNUNG AERO (RKNN)
SOUTH KOREA

TACAN:	ATIS:	GND:	TWR:	APP/DEP:	TA (ft) / TL:	GPS:	ELEV:
056X	132.05	275.8	334.9	304.0	14000/FL140	N37°47.315' E130°28.979'	051'



Note:
Contact ATC to activate
RL, REIL, ALS & PAPI.



Parking East & Alpha will be used for departure on RWY 26. Parking Bravo and HAS West will be used for departure on RWY 08. Contact Kangnung ATC for the active departure runway.

AIRPORT DIAGRAM

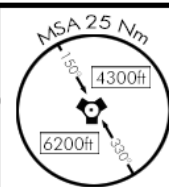
KANGNUNG AERO (RKNN)
SOUTH KOREA

GANGWON ONE

Date: 16 July 2017

KANGNUNG AERO (RKNN)
SOUTH KOREA

TACAN:	TWR:	APP/DEP:	TRANS LEVEL:	TRANS ALT:	GPS:	ELEV:
056X	334.9	304.0	FL140	14000ft	N37°47.315' E130°28.979'	051'



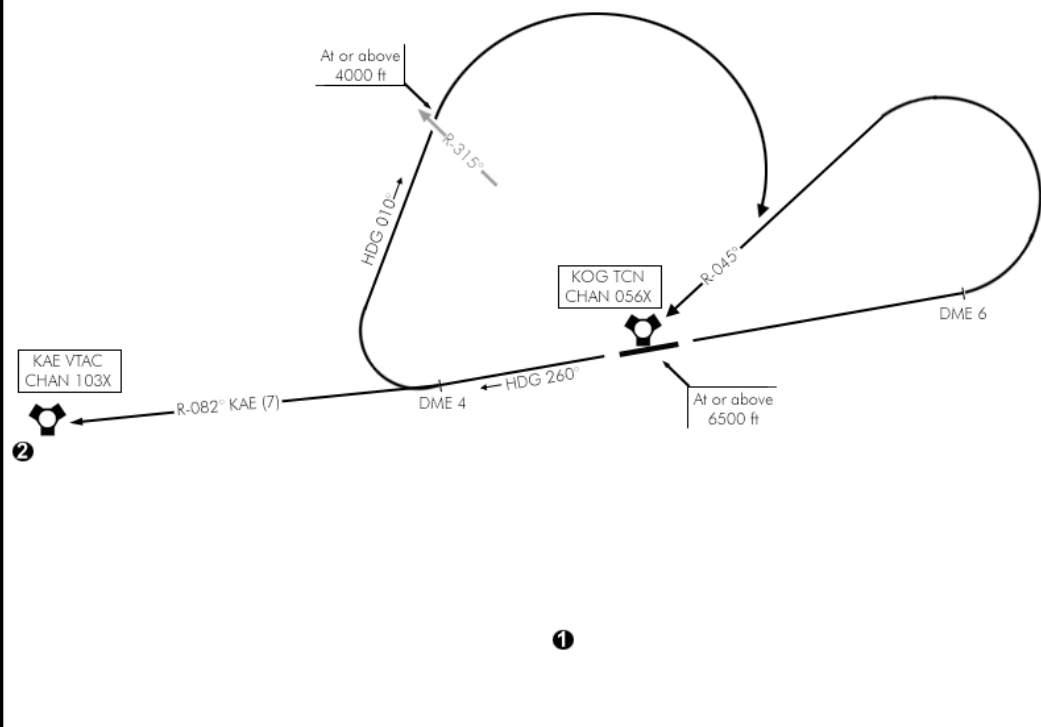
DEPARTURE ROUTE DESCRIPTION

TAKE-OFF RWY 08: Climb on runway heading to DME6, LEFT climbing turn to intercept R-045° inbound Kangnung tacan. Cross Kangnung at or above 6500ft. Turn left to track 260° until DME4. Intercept R-082° inbound Gangwon (KAE) vortac, thence...

TAKE-OFF RWY 26: Climb on runway heading to DME4, RIGHT climbing turn heading 010° until crossing R-315° Kangnung Tacan. Cross at or above 4000ft. Then Right turn to intercept R-045° inbound Kangnung Tacan. Cross Kangnung at or above 6500ft. Turn left to track 260° until DME4. Intercept R-082° inbound Gangwon (KAE) vortac, thence...



- ❶ Controlling obstacle on R-205° Kangnung Tacan DME 6 : 2490ft
- ❷ Controlling obstacle on R-260° Kangnung Tacan DME 12 : 3450ft



GANGWON ONE DEPARTURE

KANGNUNG AERO (RKNN)
SOUTH KOREA



„Circle to land, Rwy. 08“

Aufgrund hohen Flugaufkommens ist, trotz vorherrschender „Sichtflugbedingungen“, zur Koordination der Anflüge die Chart-Vorgabe umzusetzen! „Safety first“!

Kein visueller Anflug!

„Good Luck“

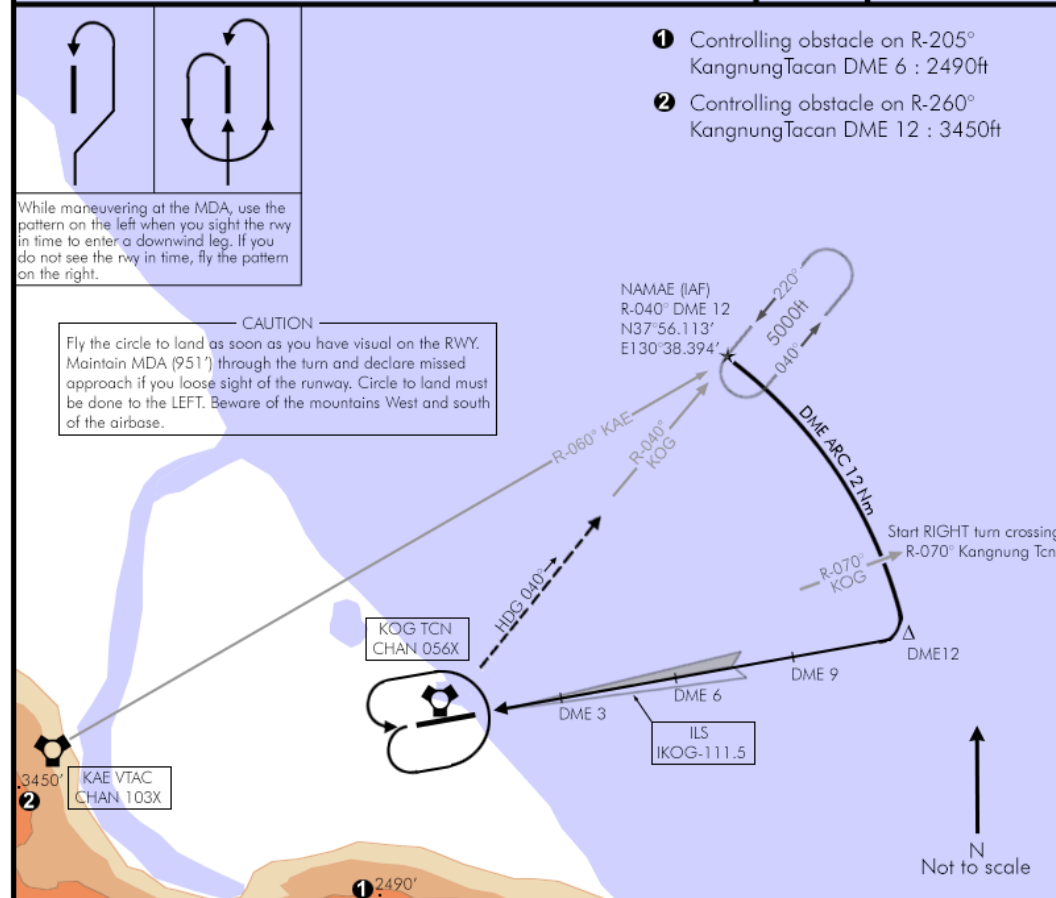


CIRCLE TO LAND RWY 08 Date: 16 July 2017

TCN:	ATIS:	APP/DEP:	TWR:	ILS:	MDA (H):	FINAL:	GPS:	ELEV:
056X	132.05	304.0	334.9	111.5	951' (900')	080°	N37°47.315' E130°28.979'	051'

MISSED APPROACH: Climbing turn to 5000 feet to intercept R-040° outbound Kangnung Tacan. Hold as published at NAMA E DME 12.

MALSFPAPI



Transition Level : FL 140 - Transition Altitude : 14000ft	MINIMA:
	ILS: 251' (200' AGL) Vis: 200ft-800m* LOC: 431' (380' AGL) Vis: 400ft-1600m** Circling: 951' (900' AGL) Vis: 1000ft-2000m *When ALS inop, increase vis to 1200m **When ALS inop, increase vis to 2000m