

# Additional Information

## OP „Mighty Oaks“



### Oak-Flights:

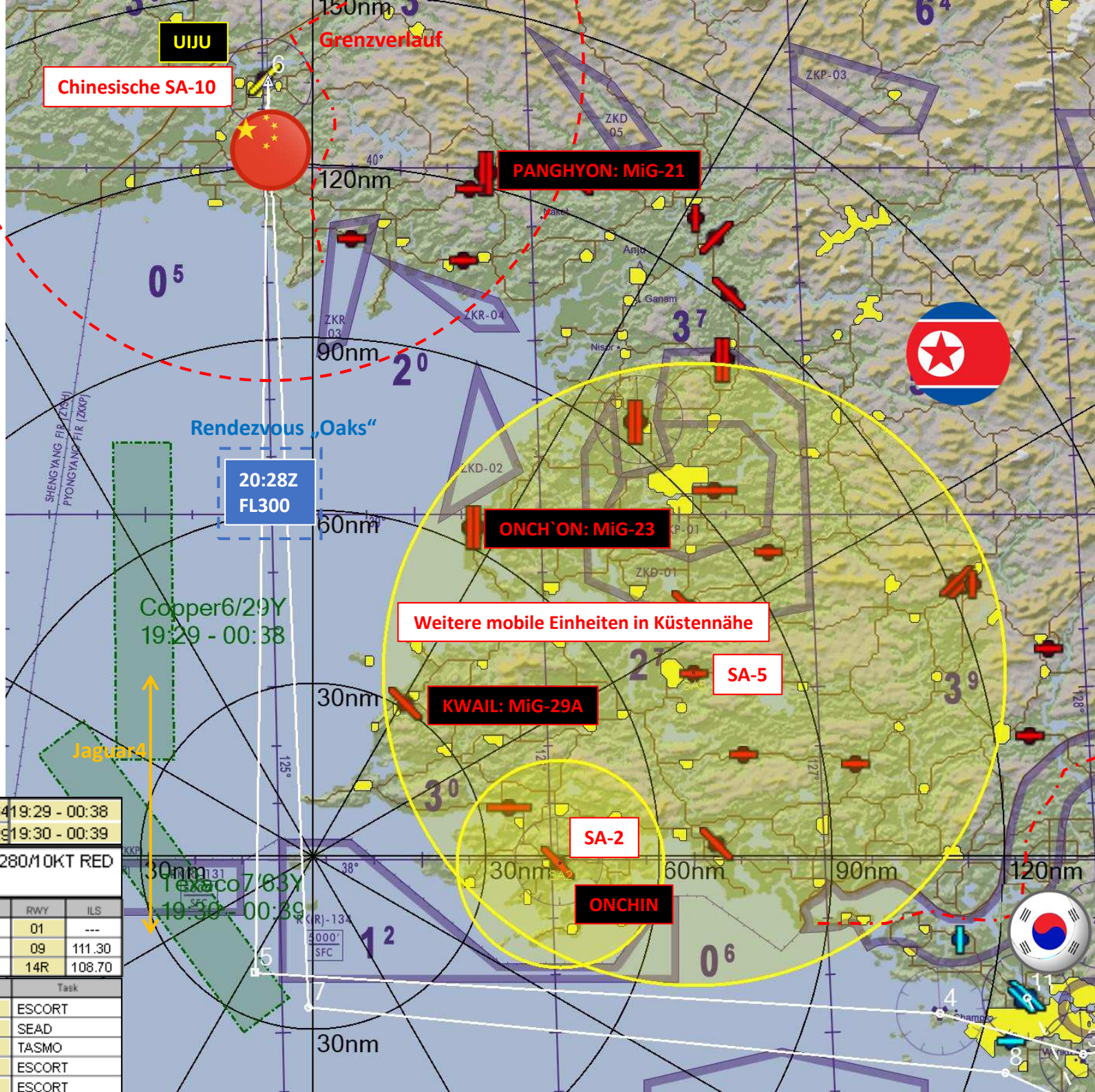
- from UIJU AB/PRC, heading SOUTH
- Rendezvous approx. 20:28Z (05:28LT)
- Position: N39° E125°

### Callsign/UHF/VHF/IFF

- Magic1 - U: 392.800, V: 143.975  
IFF: M124/130/21630/37530
- Chalis4 - U: 392.800, V: 143.975  
IFF: M124/130/21634/37534

### Rules of Engagement (ROE)

„Wir sind zur Ausschaltung jedweder Bedrohung ermächtigt. „Feuer frei“ auf alle ohne IFF-Status, mit aktivem Radar, innerhalb von 30 nm befindliche Luftfahrzeuge. Schiffsbeschuss oder SAM-Launches ergänzen diese Handlungsoption! AWACS ist bei zeitl. „Freiräumen“ zu nutzen. Die chinesische Jagdflugzeuge (Eskorte) vom Typ J-15 und J-11 sind davon ausgenommen! Heads up!



Tanker 1	Copper6 - KC-10	29Y	229.500	133 / 264	19:29 - 00:38		
Tanker 2	Texaco7 - KC-135E	63Y	305.200	140 / 229	19:30 - 00:39		
ATIS	RKSM INFO: B 011855Z RWY01 TRL140 280/10KT RED						
Military	18/8 A2980 NOSIG						
Airbase	Seoul	46 X	276.20	363.90	258	01	---
ARR	Osan	94 X	253.70	306.30	97	09	111.30
ALTN	Kimpo	83 X	236.70	363.80	96	14R	108.70

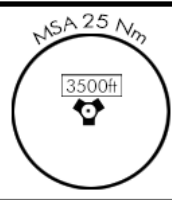
Package	Callsign Pack	1976	Aircraft Type	UHF	VHF	IDM	TCN	Task
<input checked="" type="radio"/>	Hawkeye 7	4	F-16CM-52	315.825	140.175	XMT 10	12Y	ESCORT
<input type="radio"/>	Jaguar 5	4	F-16CM-52	329.775	139.075	XMT 20	13Y	SEAD
<input type="radio"/>	Cobra 7	4	F-16CM-52	252.650	141.200	XMT 30	14Y	TASMO
<input type="radio"/>	Mudhen 1	4	F-16CM-52	363.425	139.075	XMT 40	15Y	ESCORT
<input type="radio"/>	Satan 2	2	F-16CM-52	237.950	140.850	XMT 50	16Y	ESCORT

AIRPORT DIAGRAM

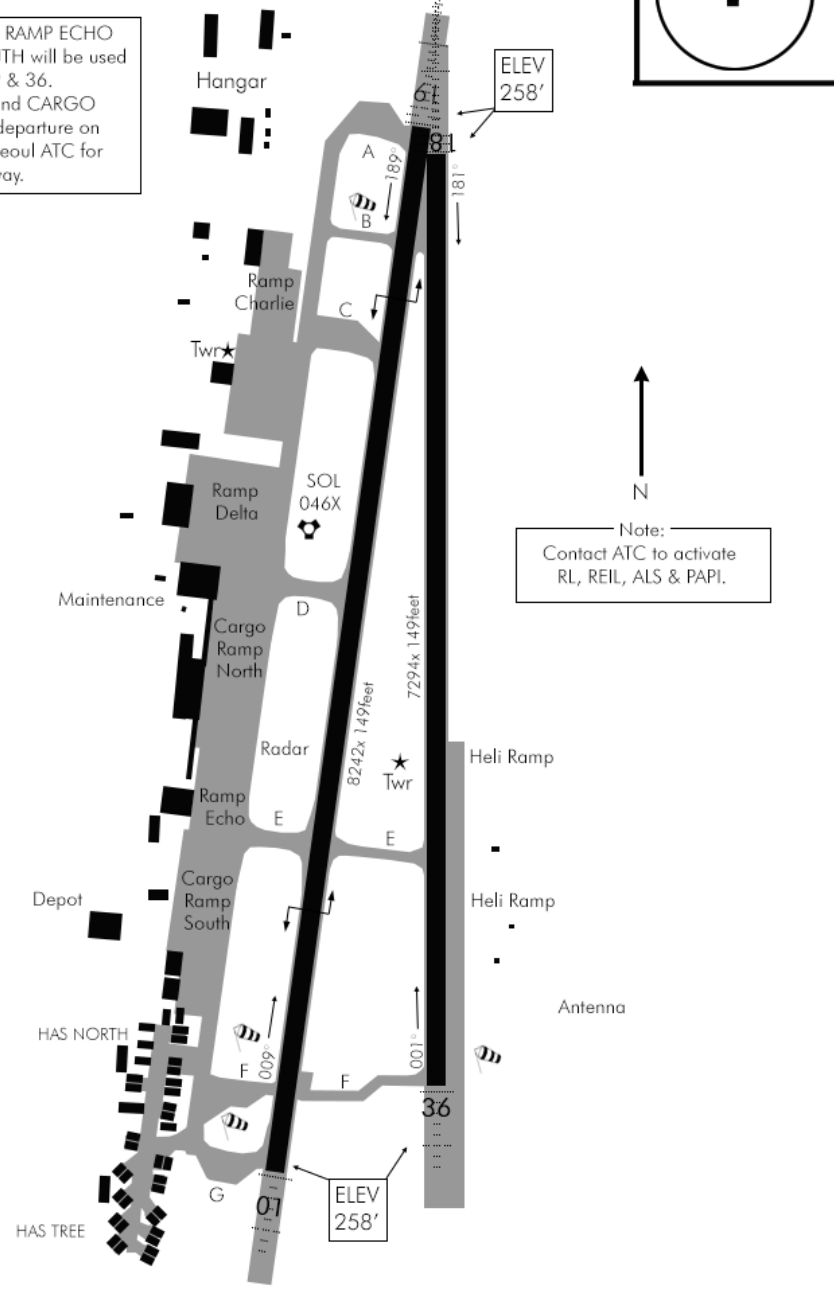
07 May 2020

SEOUL AB (RKSM)  
SOUTH KOREA

TCN:	ATIS:	GND:	TWR:	APP/DEP:	TA (ft) / TL:	GPS:	ELEV:
46X	126.4	276.2	237.1	363.9	14.000/FL140	N37°27.586' E128°07.474'	258'



HAS TREE, HAS NORTH, RAMP ECHO and CARGO RAMP SOUTH will be used for departure on RWY 19 & 36. RAMP CHARLIE, DELTA and CARGO SOUTH will be used for departure on RWY 18 & 19. Contact Seoul ATC for the active departure runway.



AIRPORT DIAGRAM

NOT FOR REAL NAVIGATION - FALCON 4 BMS ONLY

© COMBATSIM CHECKLISTS 2020

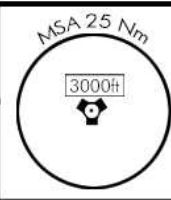
SEOUL AB (RKSM)  
SOUTH KOREA

AIRPORT DIAGRAM

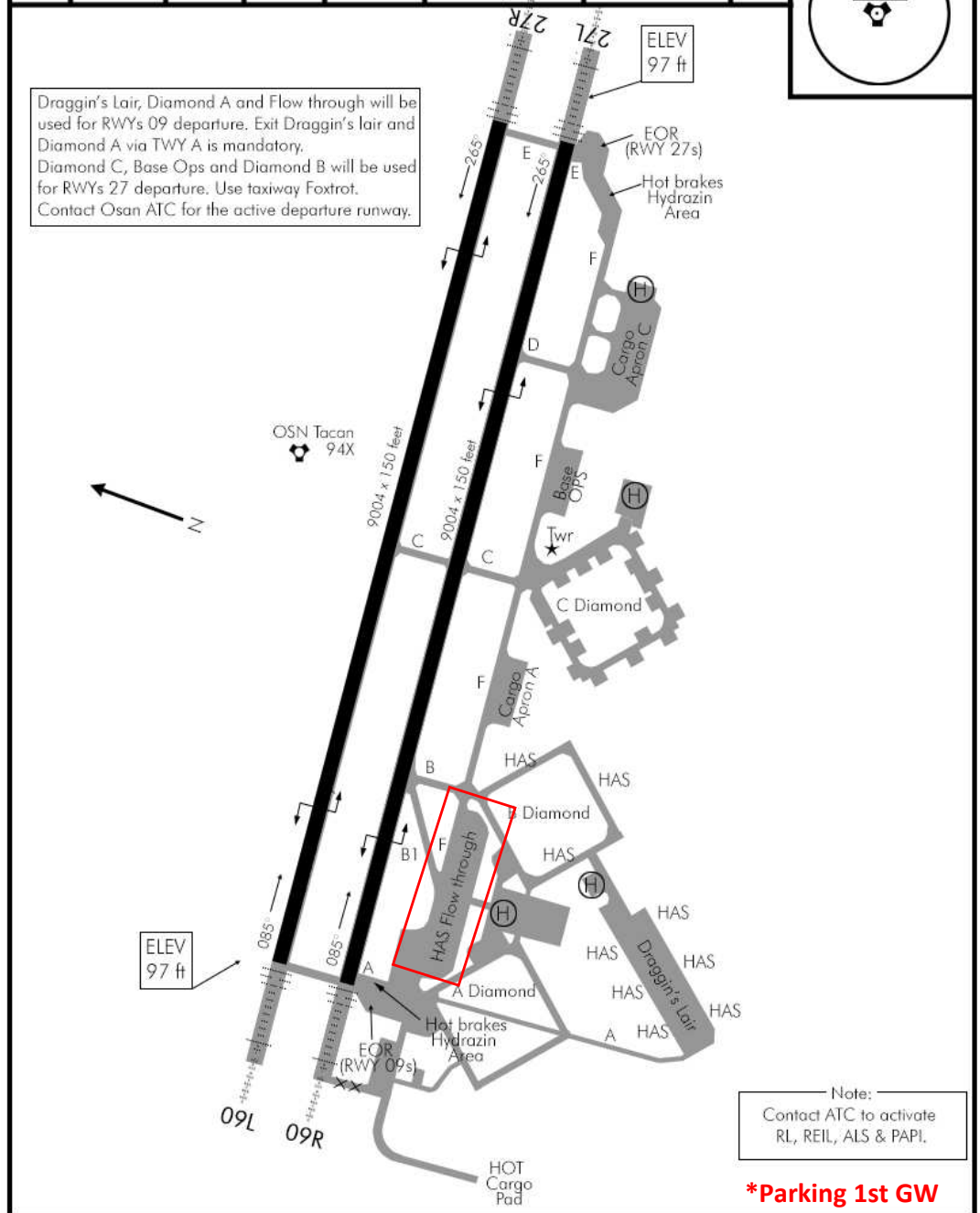
Date: 12 Dec 2019

OSAN AB (RKSO)  
SOUTH KOREA

TCN:	ATIS:	GND:	TWR:	APP/DEP:	TA (ft) / TL:	GPS:	ELEV:
94X	132.125	253.7	308.8	306.3	14000/FL140	N37°04.141' E128°00.881'	97'



Draggin's Lair, Diamond A and Flow through will be used for RWYs 09 departure. Exit Draggin's lair and Diamond A via TWY A is mandatory. Diamond C, Base Ops and Diamond B will be used for RWYs 27 departure. Use taxiway Foxtrot. Contact Osan ATC for the active departure runway.



**\*Parking 1st GW**

AIRPORT DIAGRAM

NOT FOR REAL NAVIGATION - FALCON 4 BMS ONLY

© COMBATSIM CHECKLISTS 2019

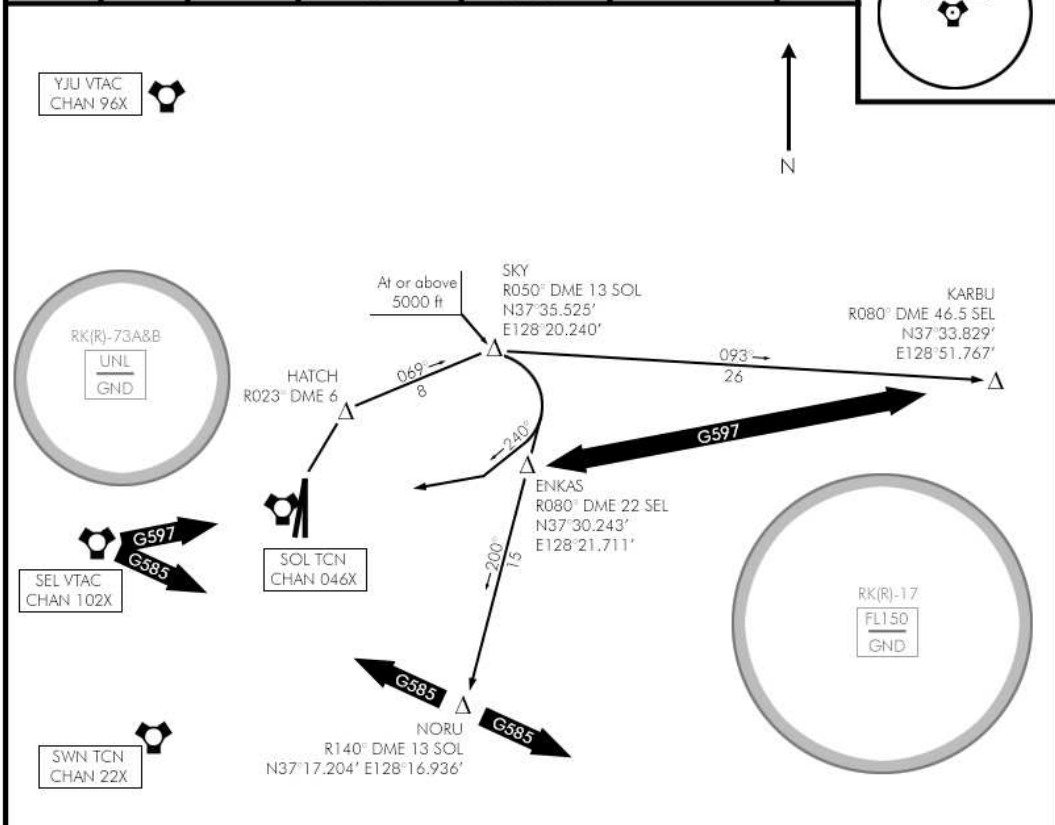
OSAN AB (RKSO)  
SOUTH KOREA

HATCH ONE DEPARTURE

13 Oct 2019

SEOUL AB (RKSM)  
SOUTH KOREA

TACAN:	TWR:	APP/DEP:	TRANS. LEVEL	TRANS. ALT.	GPS:	ELEV:
046X	237.1	363.9	FL140	14,000ft	N37°27.586' E128°07.474'	258'



DEPARTURE ROUTE DESCRIPTION

TAKE-OFF RWYs 01/36: Climb heading 023° to HATCH at DME 6,

KARBU TRANSITION: Turn RIGHT to SKY on track 069°. Cross SKY at or above 5000'. Turn RIGHT to KARBU on track 093°. Turn LEFT to join G-597 airway to KAE vortac. Thence...

ANYANG TRANSITION: Turn RIGHT to SKY on track 069°. Cross SKY at or above 5000'. Turn RIGHT to track 240° to intercept R-080° inbound SEL vortac. Join G-597 airway to ANYANG vortac. Thence...

NORU TRANSITION: Turn RIGHT to SKY on track 069°. Cross SKY at or above 5000'. Turn RIGHT to track 200° to ENKAS then NORU. Join G-585 airway. Thence...

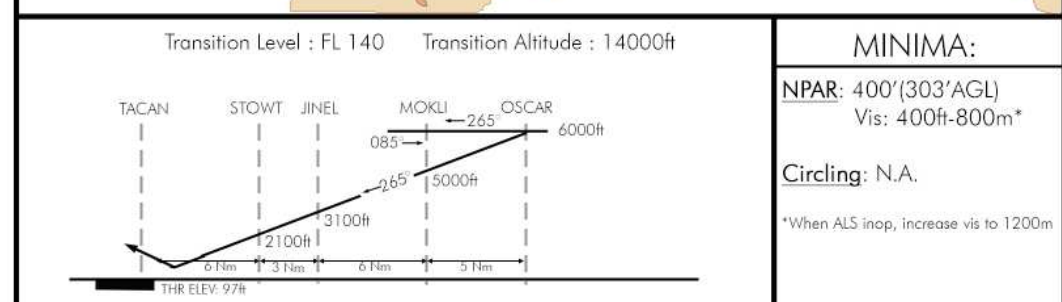
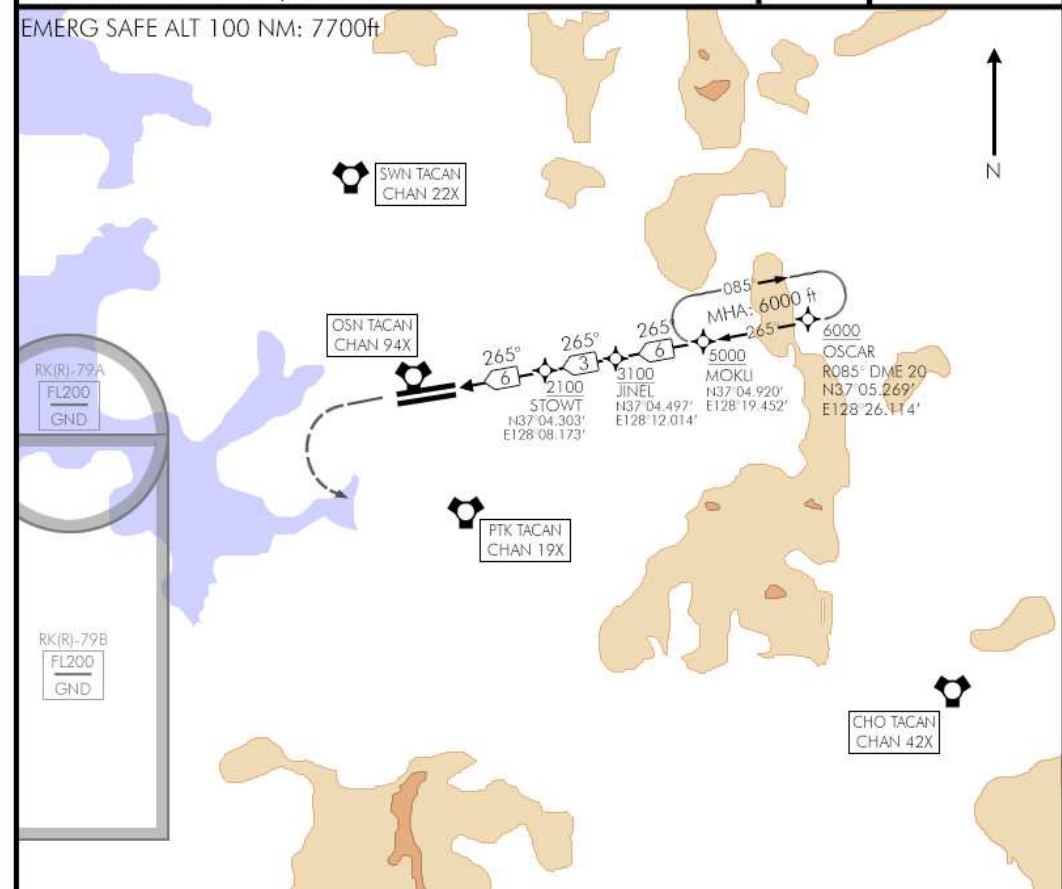
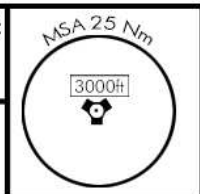
RADAR RWY 27L&R

Date: 18 Dec 2019

OSAN AB (RKSO)  
SOUTH KOREA

TCN:	ATIS:	APP/DEP:	TWR:	NPAP DA(H):	FINAL:	GPS:	ELEV:
94X	132.125	306.3	308.8	400'(303')	265°	N37°04.141' E128°00.881'	97'

MISSED APPROACH: Climb Runway heading. Reaching 1500ft turn LEFT direct to PTK TACAN 19X. Continue climb to 6000 feet. Then direct OSCAR & hold as published.



Transition Level : FL 140    Transition Altitude : 14000ft


**MINIMA:**  
NPAP: 400'(303'AGL)  
Vis: 400ft-800m\*  
Circling: N.A.  
\*When ALS inop, increase vis to 1200m

# Update Roster

## OP „Mighty Okas“

Stand: 161500Bmay21

### Package Assets

 Package **1976 Escort**, F-16CM-52  
TO: 04:45Z, SEOUL AB/ROK, ARR: OSAN AB/ROK

### OPERATION „MIGHTY OAKS“

DTG: 180445LTmay21



CALLSIGN	TASK	#1	#2	#3	#4
HAWKEYE7	ESCORT	 Capt Kiwi	 Col Stingray		
JAGUAR5	SEAD	 BrigGen Dro16	 Capt Caesar	 Maj Tomahawk	 Capt Opasi
COBRA7	TASMO	 Capt Cupra	 BrigGen Hunter		
MUDHEN 1	TASMO	 Maj Dagger	 LtCol Bluebird		
SATAN2	ESCORT	 Capt Corran	 LtCol BadCrow		
JAGUAR 4	HAVCAP	 LtCol The Witch	 2nd Lt Actros		

### Missing in Action (MIA)



- Not in Operation (temporary)**
-  LtCol Toschi
  -  Maj Yankee
  -  Maj Sneakpeek
  -  2nd Lt Skipper
  -  2nd Lt MedMax
  -  2nd Lt Paul
  -  LtCol Bflat
  -  LtCol Joker
  -  Maj Numsi