



# HOW DIFFICULT AND COMPLICATED IS AERIAL REFUELING?

The graphic illustrates the complexity of aerial refueling. It features a large KC-135 Stratotanker from the U.S. Air Force (tail number 8007) refueling an F-16 fighter jet (tail number 0226). The scene is set against a backdrop of Earth from space. Several circular insets provide different views: one shows a top-down view of the refueling boom, another shows a side view, and a third shows a cockpit perspective. A logo for 'SAPERE AUDE' (Latin for 'Know Thyself, Fear Nothing') is visible, along with the text 'Innovation Discoveries'.

ARAL

Super	1.49
ultimate 102	1.57
Diesel	1.17
ultimate diesel	1.27

Shell V-Power  
Sin Plomo 98 1.369  
24 Horas



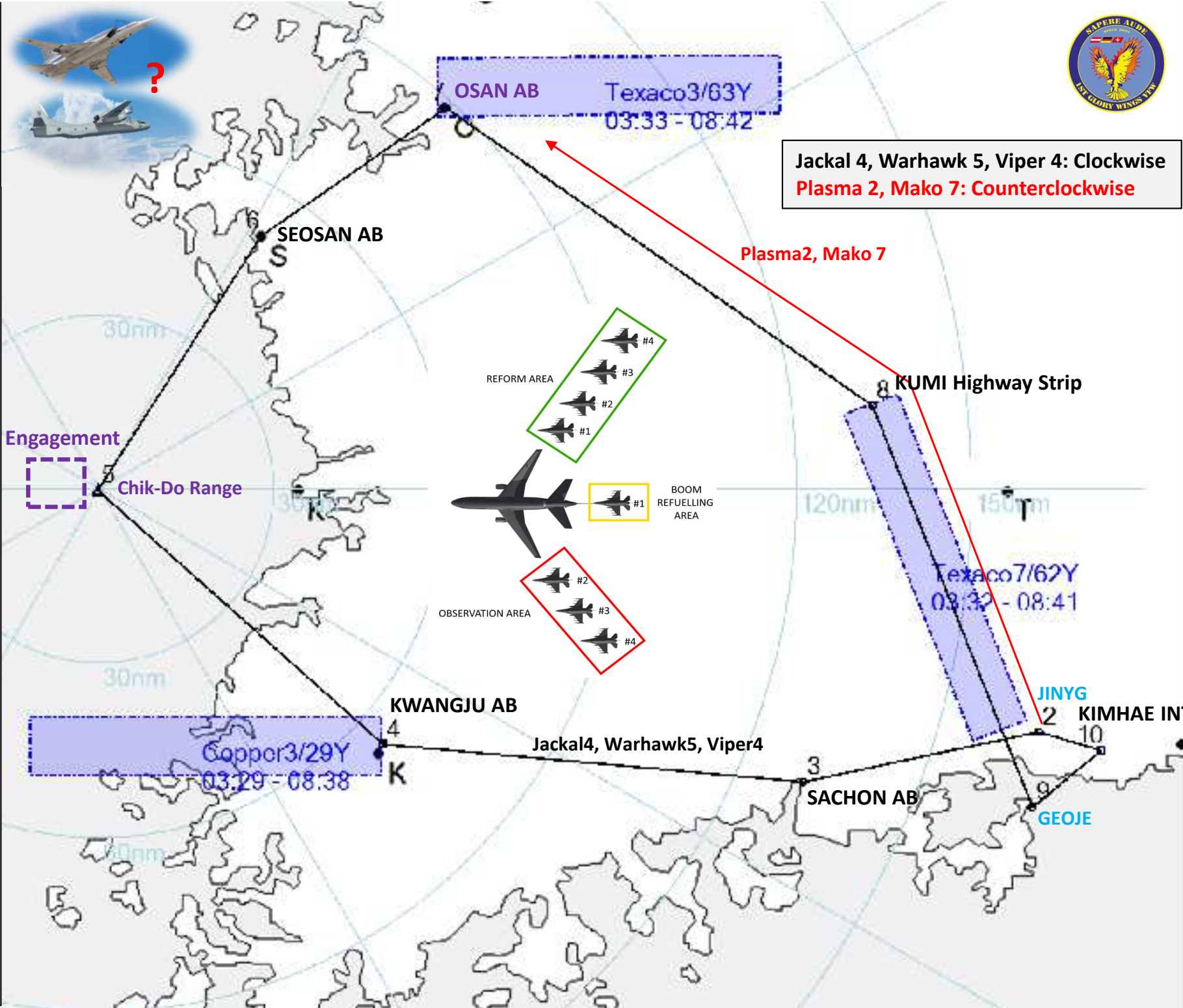
Package 1976, F-16CM-52  
 - Patrol - 2-ship

- TO/ARR: KIMHAE INT. 04:00Z (13:00LT)
- Exit: JINYG
- Approach: via GEOJE, TCN Rwy. 18 (U-17)
- Alternate: SACHON AB, 50 nm WEST

Weather-Forecast  
 FAIR, 24°C, Clouds 3/8, 5000-7000 ft AGL,  
 Con Layer: 28.000ft MSL  
 Wind 220°, 10-15 kts, VIS 47 km, CAVOK, NOSIG,  
 Sunset: 09:00Z (18:00Z)

- Aufträge
- 3 Tankvorgänge (Frequenzmanagement Echelon-Formation, Tankprozedur, Absprache der Flights)
  - Einsatz AGM-65G gegen Schiffsziele, SP: OSA-II
  - Zwischenlandung OSAN AB (KI-ATC)
  - Identifizierung Lfz NW of SEOSAN (AN-AAQ 33- SNIPER)

No Air-Threats, no SAM's!



Package	Callsign Pack	Aircraft Type	UHF	VHF	IDM	TCN	Task
<input checked="" type="radio"/>	Jackal 4	2 F-16CM-52	341.275	139.250	XMT 10	12Y	PATROL
<input type="radio"/>	Plasma 2	2 F-16CM-52	248.025	139.425	XMT 20	13Y	PATROL
<input type="radio"/>	Warhawk 5	2 F-16CM-52	363.225	139.675	XMT 30	14Y	PATROL
<input type="radio"/>	Mako 7	2 F-16CM-52	390.450	138.725	XMT 40	15Y	PATROL
<input type="radio"/>	Viper 4	2 F-16CM-52	291.875	140.325	XMT 50	16Y	PATROL

Loadout	INV	QTY							
AIM-120C AMRAAM	HGH	2		●	○	○	○	○	●
AIM-9X Sidewinder	HGH	2		○	●	○	○	○	○
AGM-65G Maverick	HGH	2			●	○	○	●	
AN/AAQ-33 SNIPER	HGH	1		●					
AN/ASQ-213 HTS	HGH	1		●					
Low Alt Camera	HGH	1					●		
Tank 370gal	HGH	2				●		●	

### AERIAL REFUELLING

**Tanker rejoin :**

- Radio Request Refuelling (within 10Nm)
- TCN Select TCN Channel (Texaco)
- TCN Mode SET A/A TR
- Heading Course to Intercept (HSI)
- Altitude Tanker ALT – 1000 Ft

**Before Precontact:**

- Master ARM Check Safe
- Sensors (FCR) Check Nose Cold (STBY)
- EW Mode knob & ECM STBY and OFF
- RDR ALT STBY
- EXT Lights DIM (night) – STEADY
- ANTI COLLISION light OFF at Night
- AIR REFUEL switch Open
- AR status indicator Check RDY Light On
- Seat SAFE (As desired)

**Contact:**

- Position Follow Director Lights
- AR status indicator Check AR/NWS Light On
- Fuel Transfer Monitor (List - #2)

**Disconnect:**

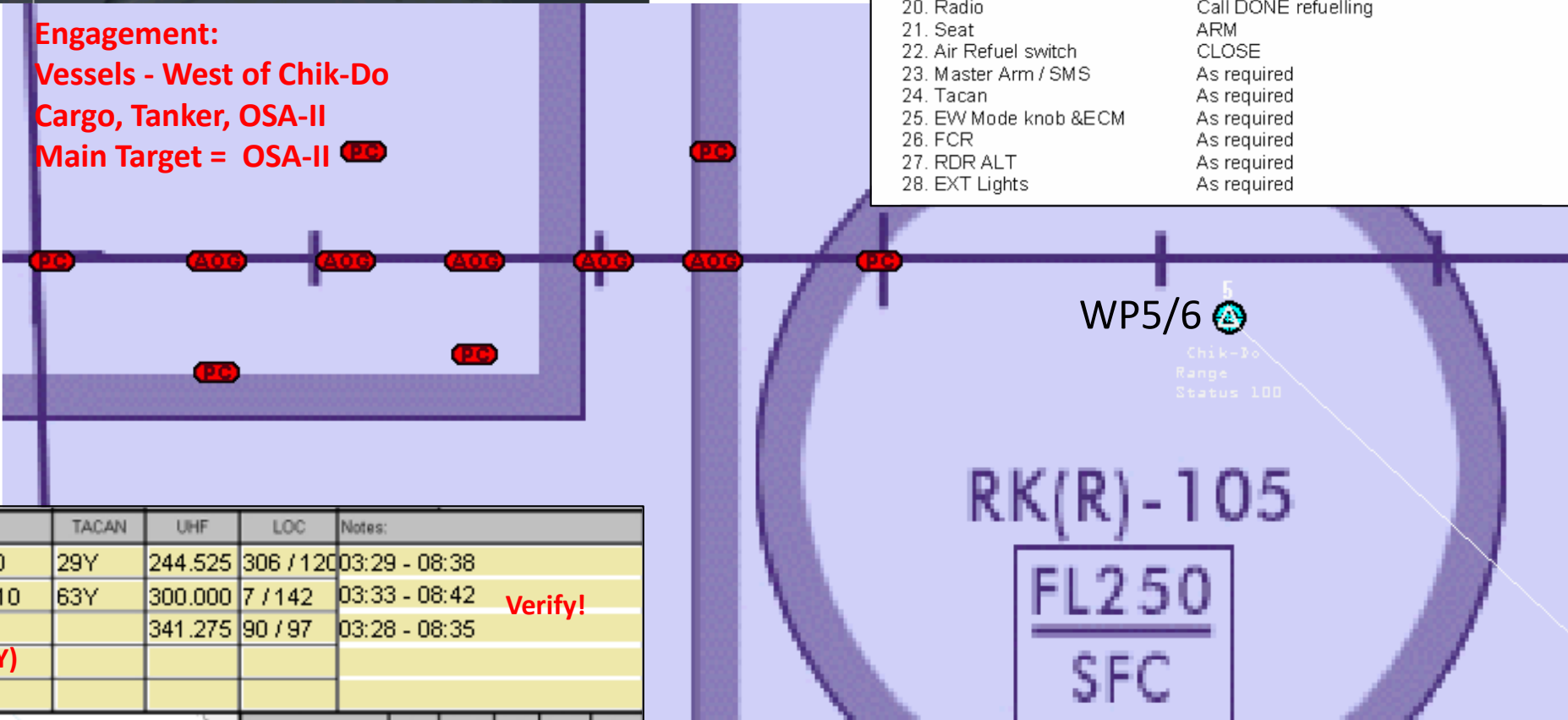
- A/R DISC button Depress
- Throttle Decrease power

**Post Air refuelling:**

- Radio Call DONE refuelling
- Seat ARM
- Air Refuel switch CLOSE
- Master Arm / SMS As required
- Tacan As required
- EW Mode knob & ECM As required
- FCR As required
- RDR ALT As required
- EXT Lights As required

**Engagement:**  
**Vessels - West of Chik-Do**  
**Cargo, Tanker, OSA-II**  
**Main Target = OSA-II**

**Read:**  
**1st GW Handbook**  
**4.3.10 AA-Refueling**



Support	AC Type	TACAN	UHF	LOC	Notes:
Tanker 1	Copper3 - KC-10	29Y	244.525	306 / 1200	03:29 - 08:38
Tanker 2	Texaco3 - KDC-10	63Y	300.000	7 / 142	03:33 - 08:42
AWACS	Dragnet6 - E-3		341.275	90 / 97	03:28 - 08:35
JSTAR	<b>+Texaco7 (62Y)</b>				
FAC					

**Verify!**