

# Mission Overview

## SEAD Training July 26th

T/O/ARR: REGGIO CALABRIA,  
approx. 03:30Z  
WP1: Homeplate  
WP2: NAV 20 nm North  
WP3: AAR – part I  
WP4: IP – IN  
WP5: Target Area  
WP5: IP – OUT  
WP7: AAR – part II  
WP8: NAV  
WP9: NAV –Approach  
WP: 10: Homeplate  
WP11: Alternate CROTONE AB

### Threat Analysis:

- SA-4 (2K11) missile launchers  
8 nm northwest of AVERSA
- SA-10 (S300) missile  
launchers at LATINA AB
- SA-11 (9K37M1) missile  
launchers 8 nm northwest of  
-SANTA MARIA CUPUA VETERE

- Enemy CAP aircraft (MiG-  
23/MiG-29A) from  
GRAZZANISE AB /PRATICA DIE  
MARE AB

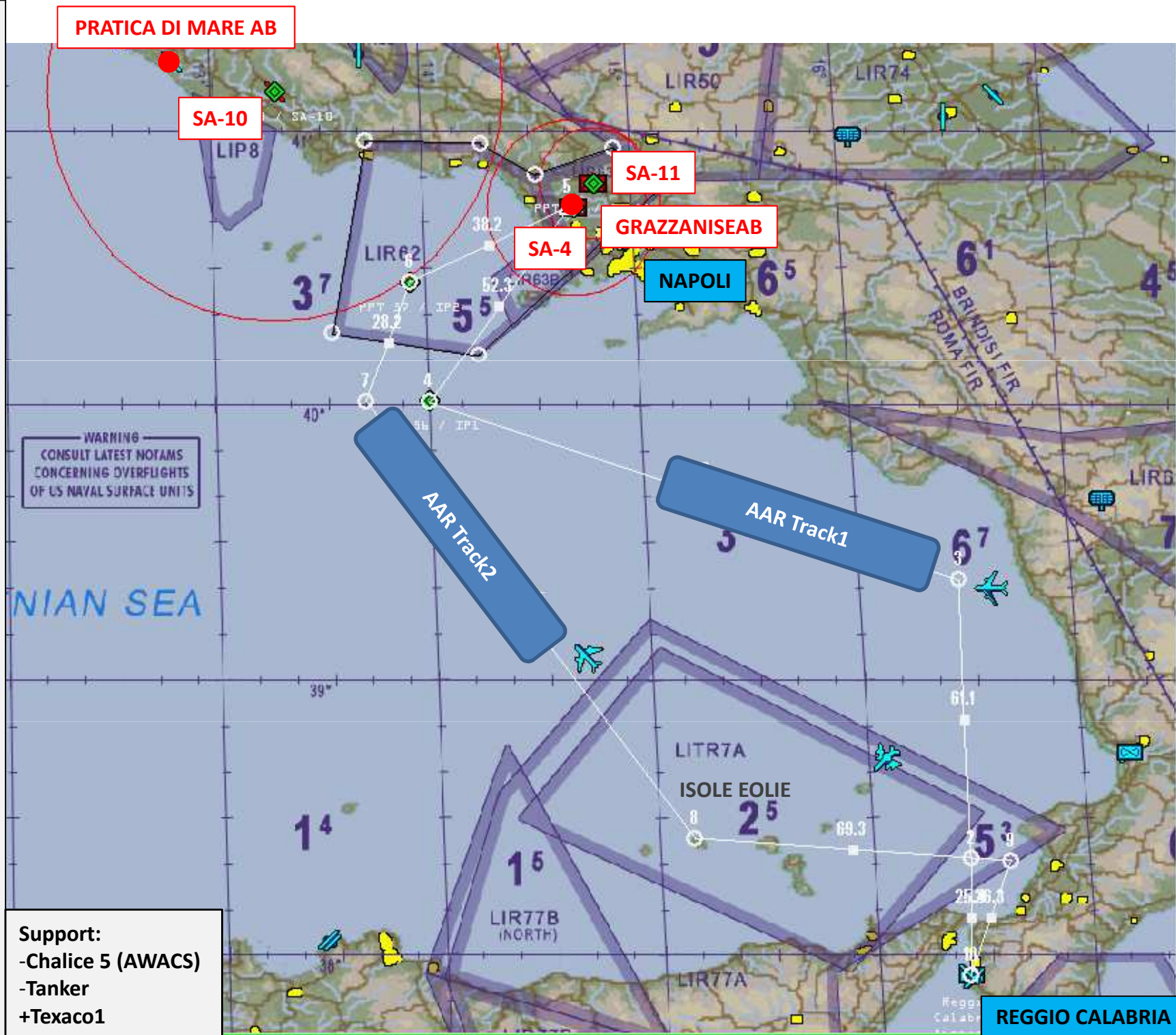
### Weather-Forecast:

Fair, 15°C, Wind 60°, 8 kts, VIS  
47 km, Cloud Base: 5000 ft  
MSL, CON Layer: 28.000 ft  
MSL., NOSIG

Sunrise: 03:40Z (05:40LT)

### Support:

- Chalice 5 (AWACS)
- Tanker
- +Texaco1
- +Copper3
- +Texaco 5



LATINA AB



CAPUA



GRAZZANISE AB

GRAZZANISE



SANTA MARIA  
CAPUA VERDE

AVERSA

Pontinische Inseln

VENTOTENE

OUT

LIR62

LIR63B



ISCHIA

Golfo di Napoli

NAPOLI

CAPRI

MAR TIRRENO



IN