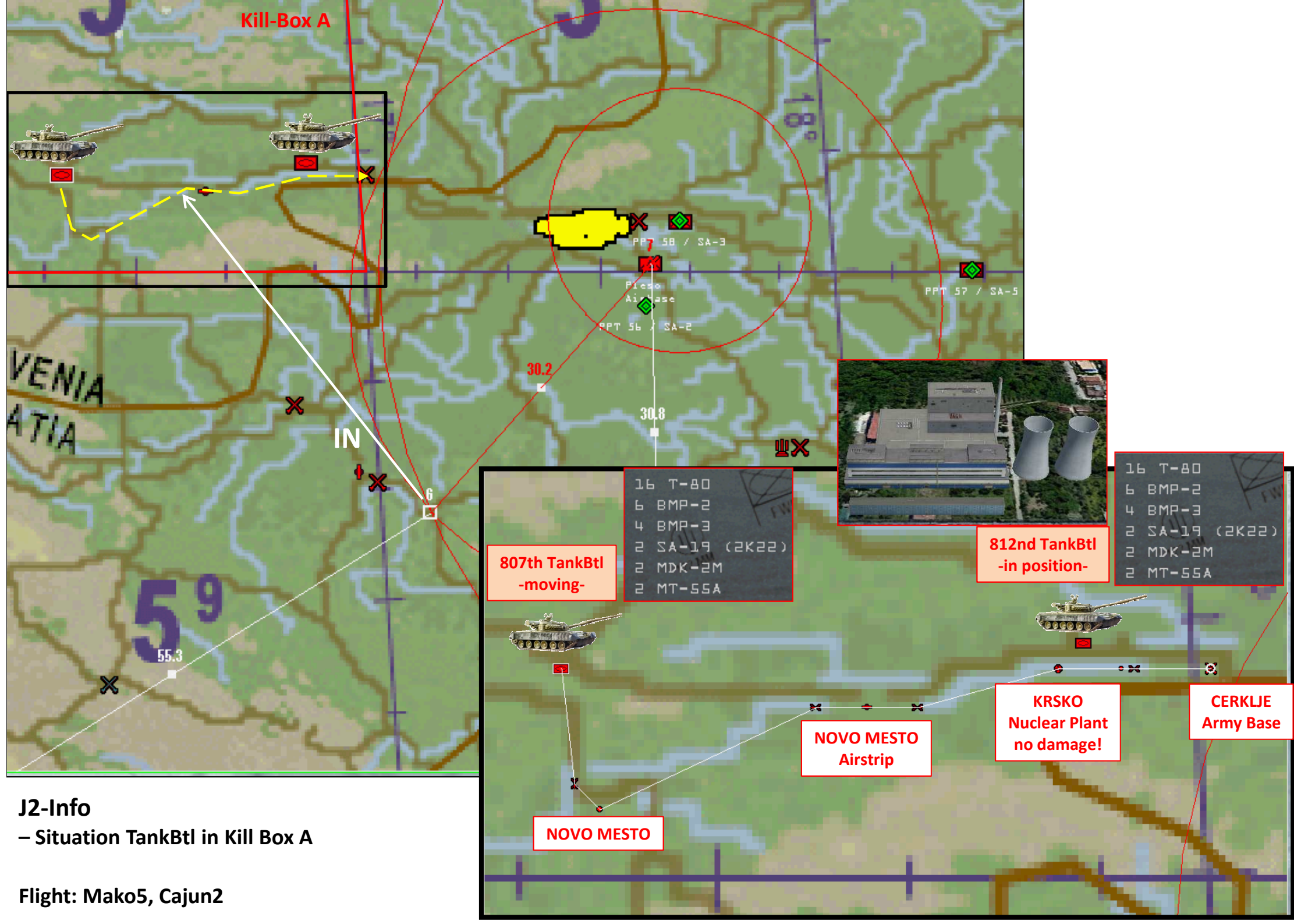


Kill-Box A



**807th TankBtl
-moving-**

| | |
|----|--------------|
| 16 | T-80 |
| 6 | BMP-2 |
| 4 | BMP-3 |
| 2 | SA-19 (2K22) |
| 2 | MDK-2M |
| 2 | MT-55A |

**812nd TankBtl
-in position-**

| | |
|----|--------------|
| 16 | T-80 |
| 6 | BMP-2 |
| 4 | BMP-3 |
| 2 | SA-19 (2K22) |
| 2 | MDK-2M |
| 2 | MT-55A |



**NOVO MESTO
Airstrip**

**KRSKO
Nuclear Plant
no damage!**

**CERKLJE
Army Base**

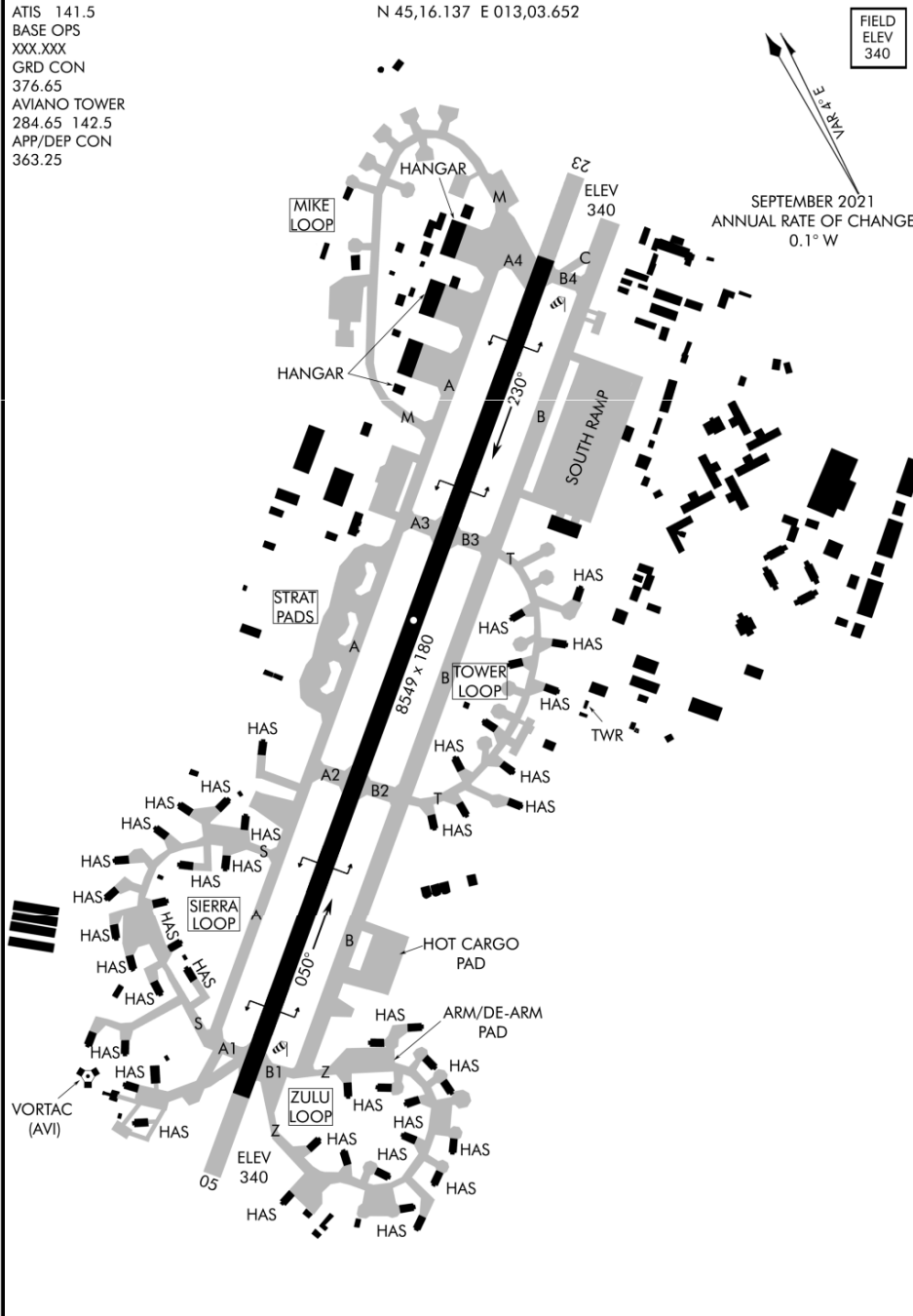
NOVO MESTO

**J2-Info
– Situation TankBtl in Kill Box A**

Flight: Mako5, Cajun2

AIRPORT DIAGRAM

AVIANO (LIPA)
AVIANO, ITALY



AIRPORT DIAGRAM
NOT FOR REAL NAVIGATION - FALCON 4 BMS ONLY
Updated: 20JAN22

AVIANO, ITALY
AVIANO (LIPA)



A
V
I
A
N
O

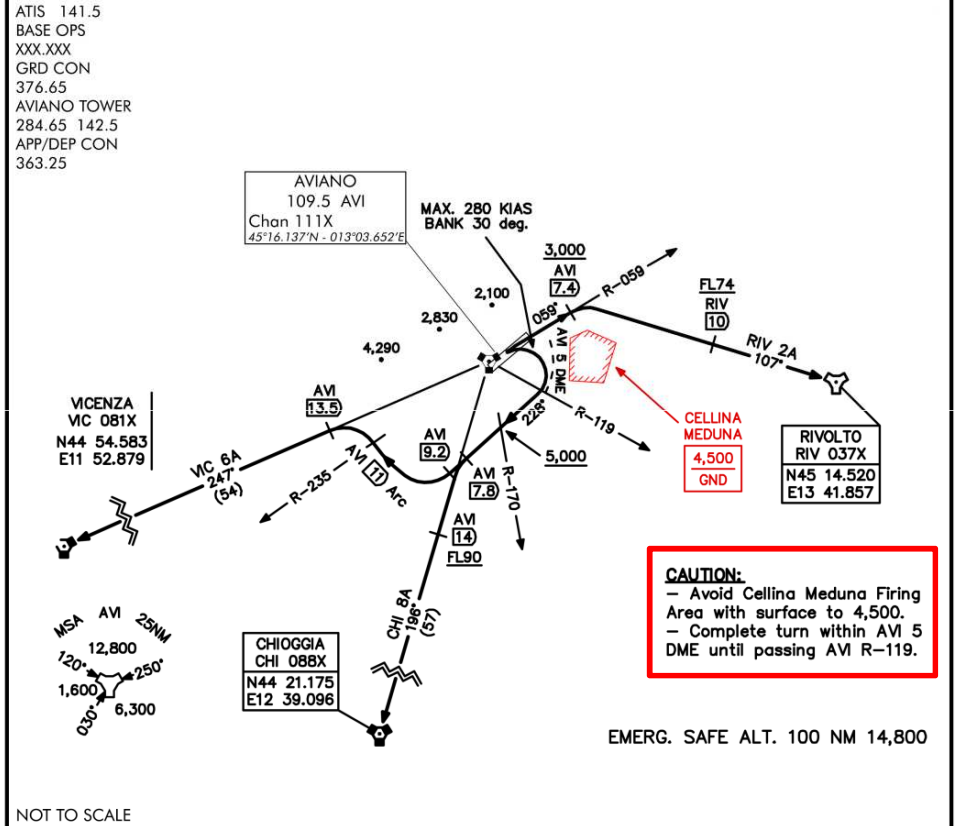
A
I
R

B
A
S
E



RWY 05 DEPARTURE

AVIANO (LIPA)
AVIANO, ITALY



DEPARTURE ROUTE DESCRIPTION

CHI 8A DEPARTURE:
Climb right turn on HDG 228°. Cross AVI R-170 at 5,000 or above. At AVI DME 7.8 climb left turn to intercept AVI R-196 outbound. Cross AVI R-196 DME 14.0 at FL90 or above and continue outbound to CHI VORTAC. Thence...

RIV 2A DEPARTURE:
Climb on HDG 050° to intercept AVI R-059 outbound. Cross AVI R-059 DME 7.4 at 3,000 or above and climb right turn to intercept RIV R-287 inbound. Cross RIV R-287 DME 10.0 FL74 or above and continue inbound to RIV TACAN. Thence...

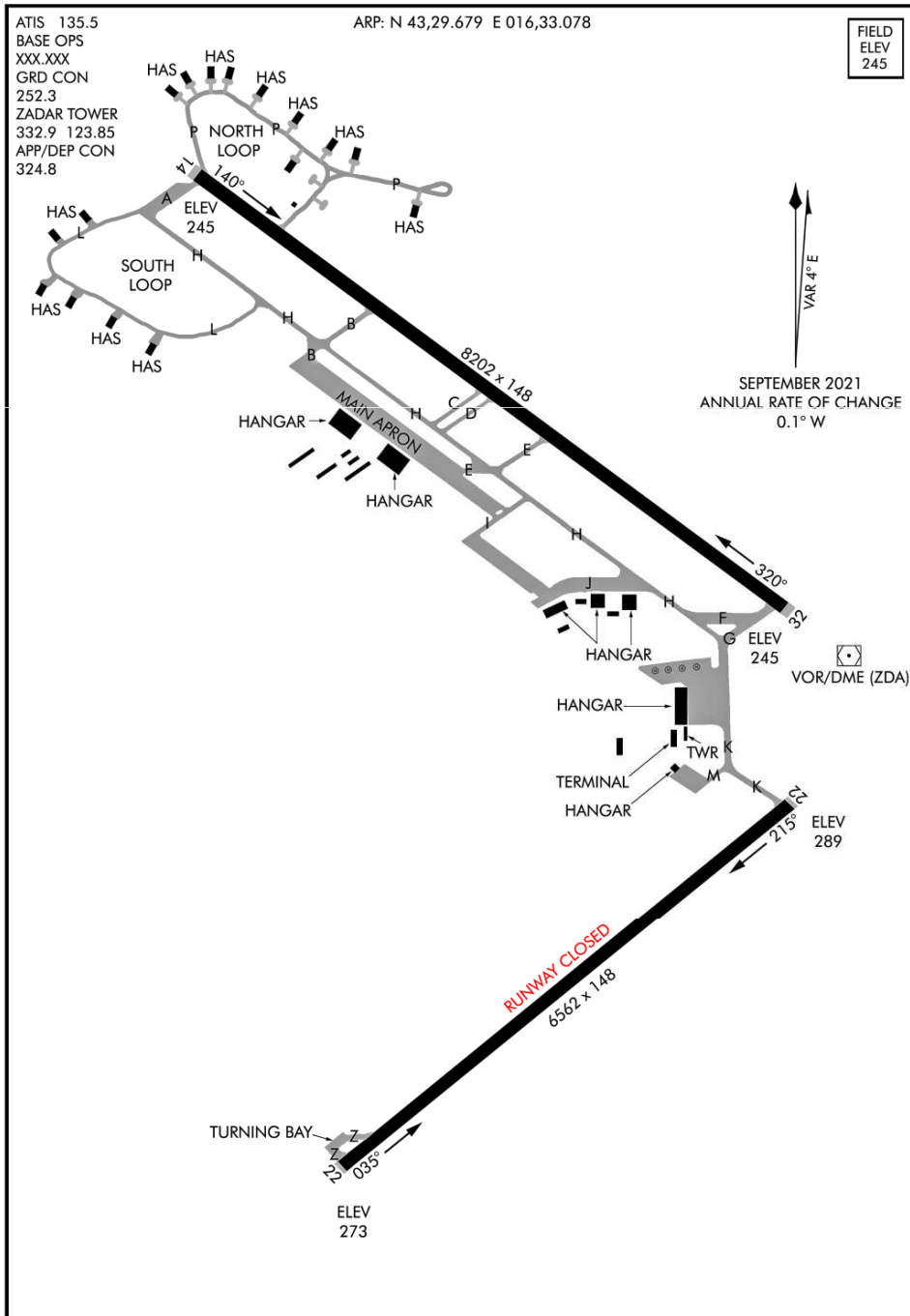
VIC 6A DEPARTURE:
Climb right turn on HDG 228°. Cross AVI R-170 at 5,000 or above. At AVI DME 9.2 turn right to join AVI DME 11.0 arc. Then turn left to intercept AVI R-247 outbound to VIC VORTAC. Thence...

RWY 05 DEPARTURE
NOT FOR REAL NAVIGATION - FALCON 4 BMS ONLY
Updated: 20JAN22

AVIANO, ITALY
AVIANO (LIPA)

AIRPORT DIAGRAM

ZADAR (LDZD)
ZEMUNIK, CROATIA



Z
E
M
U
N
I
K

A
I
R

B
A
S
E

© BENCHMARK SIMS



AIRPORT DIAGRAM

NOT FOR REAL NAVIGATION - FALCON 4 BMS ONLY

Updated: 15JAN22

ZEMUNIK, CROATIA
ZADAR (LDZD)

ZEMUNIK, CROATIA

TACAN RWY 32

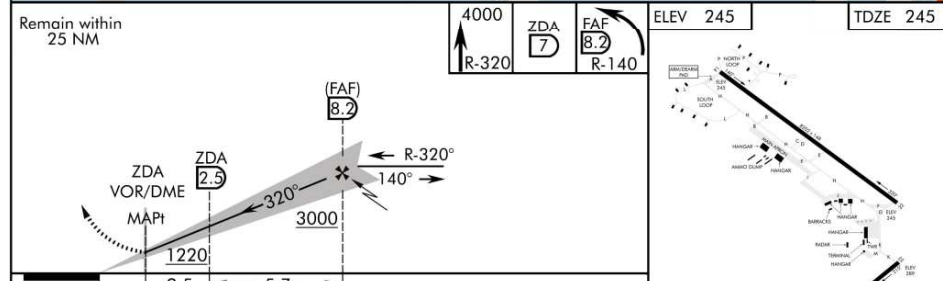
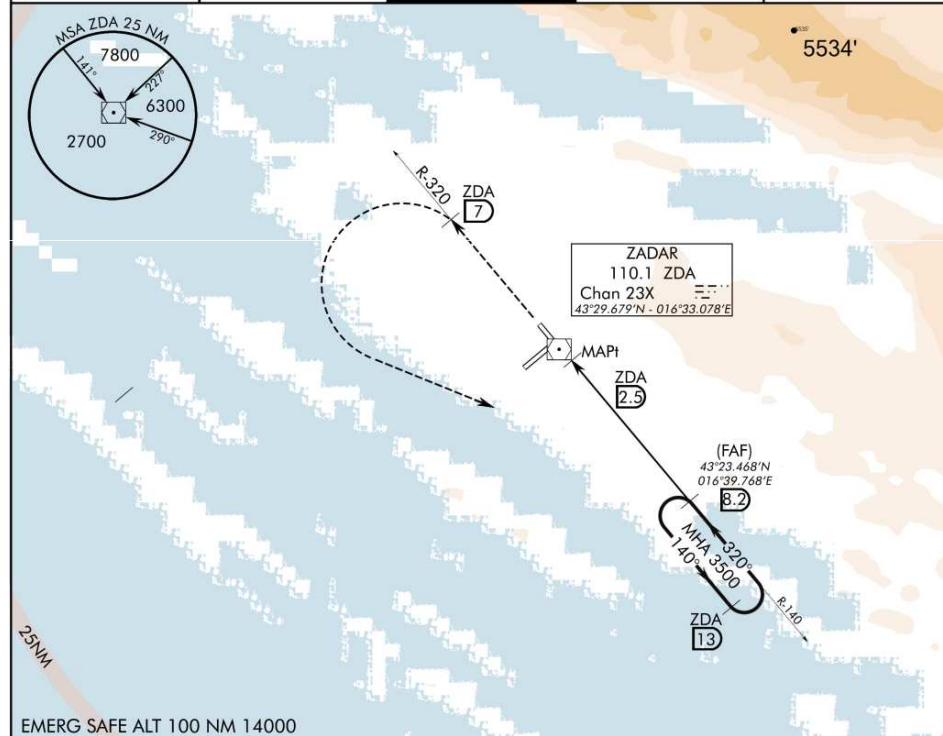
ZADAR (LDZD)

| | | |
|--------------------------------|------------------|--|
| TACAN ZDA 110.1 Chan 23X | APCH CRS 320° | Rwy ldg TDZE Arpt Elev 15,000 245 |
|--------------------------------|------------------|--|

ALS-F1

MISSED APPROACH: Climb straight to ZDA DME 7.0 at R-320. Cross ZDA DME 7.0 at or above 4000 and turn left to intercept R-140 at FAF DME 8.2. Contact ATC for instructions.

| | | | | |
|---------------|------------------|-----------------------|--------------|---------------------|
| ATIS 135.5 | APP/DEP 324.8 | TOWER 332.9 123.85 | GND 252.3 | BASE OPS XXX.XXX |
|---------------|------------------|-----------------------|--------------|---------------------|



| CATEGORY | C | D | E |
|----------------------|-------------------------------------|-------------------------------------|-------------------------------------|
| S-TACAN-32 | 645'(600'AGL) Vis: 200ft-1600m | 655'(610'AGL) Vis: 200ft-1600m | 655'(610'AGL) Vis: 200ft-1600m |
| C CIRCLING ** | 1045'(1000'AGL) Vis: 200ft-1600m | 1075'(1030'AGL) Vis: 200ft-1600m | 1075'(1030'AGL) Vis: 200ft-1600m |

ZEMUNIK, CROATIA

43°29.984'N - 016°32.425'E

ZADAR (LDZD)

TACAN RWY 32

NOT FOR REAL NAVIGATION - FALCON 4 BMS ONLY

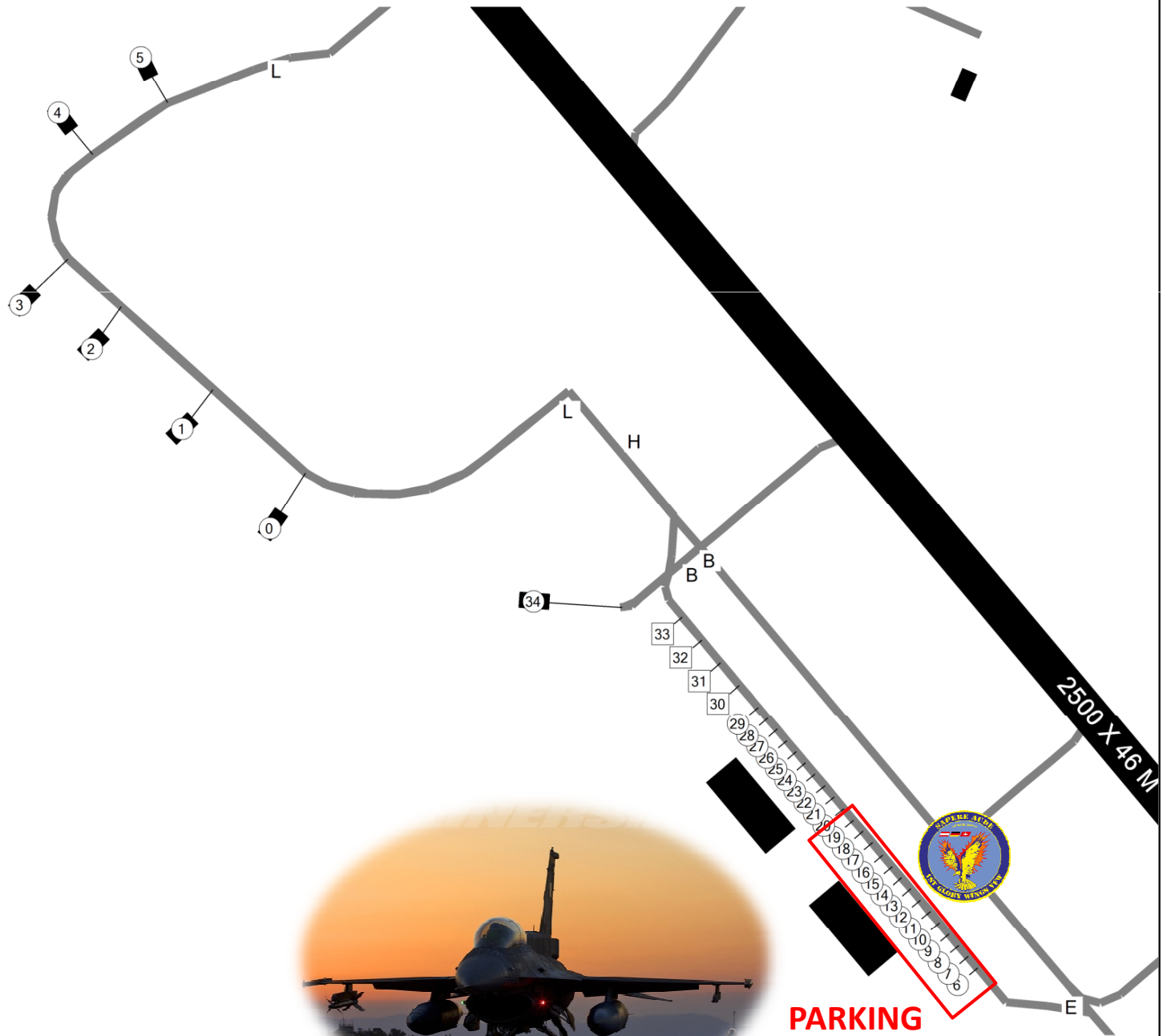
Updated: 15JAN22

© BENCHMARK SIMS

Zemunik Parking Chart RWY32

ATIS 135.500
 GND 252.300
 TWR 332.900 123.850
 DEP 324.800

| | | | |
|----|---|------------|-------------|
| 0 | S | N43,29.368 | E016,32.671 |
| 1 | S | N43,29.434 | E016,32.598 |
| 2 | S | N43,29.486 | E016,32.521 |
| 3 | S | N43,29.515 | E016,32.459 |
| 4 | S | N43,29.641 | E016,32.505 |
| 5 | S | N43,29.677 | E016,32.582 |
| 6 | S | N43,29.069 | E016,33.263 |
| 7 | S | N43,29.076 | E016,33.255 |
| 8 | S | N43,29.084 | E016,33.248 |
| 9 | S | N43,29.091 | E016,33.239 |
| 10 | S | N43,29.099 | E016,33.232 |
| 11 | S | N43,29.106 | E016,33.224 |
| 12 | S | N43,29.114 | E016,33.216 |
| 13 | S | N43,29.121 | E016,33.208 |
| 14 | S | N43,29.128 | E016,33.200 |
| 15 | S | N43,29.135 | E016,33.192 |
| 16 | S | N43,29.143 | E016,33.184 |
| 17 | S | N43,29.151 | E016,33.176 |
| 18 | S | N43,29.158 | E016,33.168 |
| 19 | S | N43,29.166 | E016,33.160 |
| 20 | S | N43,29.173 | E016,33.152 |
| 21 | S | N43,29.181 | E016,33.144 |
| 22 | S | N43,29.188 | E016,33.136 |
| 23 | S | N43,29.196 | E016,33.128 |
| 24 | S | N43,29.203 | E016,33.120 |
| 25 | S | N43,29.210 | E016,33.113 |
| 26 | S | N43,29.218 | E016,33.105 |
| 27 | S | N43,29.225 | E016,33.097 |
| 28 | S | N43,29.232 | E016,33.089 |
| 29 | S | N43,29.240 | E016,33.081 |
| 30 | L | N43,29.254 | E016,33.064 |
| 31 | L | N43,29.268 | E016,33.049 |
| 32 | L | N43,29.284 | E016,33.033 |
| 33 | L | N43,29.299 | E016,33.018 |
| 34 | S | N43,29.320 | E016,32.904 |



AD Elev 245'