

Flight-Training  
August 30, 2022



Improved Data Modem (IDM)  
- DATA LINK OPERATION -

M  
I  
S  
S  
I  
O  
N



Nr.	Order	Remark
1.	S&D MQ-9, G-4 (Zielzuweisung/Datentransfer im eigenen Flight )	Ein Ziel je Pilot, mittels AIM-9X
2.	S&D „Low Blow“ in der befohlenen Area (A-D) (Datentransfer innerhalb des Flights)	Einsatz TGP und GBU-39
3.	Search „SA-3 Launcher“ in der befohlenen Area (Koordinatenermittlung, Datentransfer <b>Spade4 an Cobra3</b> , <b>Cobra4 an Mako6</b> )	Einsatz TGP
4.	Bekämpfung der „SA-3 Launcher“ in der jeweiligen Nachbarzone	Einsatz TGP und GBU-39
5.	Verbleib zunächst in der Nachbarzone, „Search moving TankBtl/SHORAD Btl“, Koordinatenermittlung SA-19/ZSU-23-4, Datentransfer <b>Spade4 an Cobra3</b> , <b>Cobra4 an Mako6</b>	
6.	Bekämpfung TankBtl (SA-19)/ SHORAD Btl (ZSU-23-4) gem. Datenaustausch (Wechsel der Zone)	Einsatz TGP und GBU-39
7.	AAR gem. Tankerzuordnung	ANNEX1
8.	RTB via ILS-Approach Rwy. 22	ANNEX2

Training Area 1st GW: „Room Allocation“  
OPEN: 301300Z – 301600Z



ANNEX1



Spade4

Cobra3

Copper5 (Cobra3, Mako6)

Copper1 (Spade4, Cobra4)

TankBtl (T-80)

Mako6

TankBtl (T-80)

SHORAD Btl

Cobra4

PESCARA Air Base

ALTERNATE:  
FALCONARA AB

SHORAD Btl

A

B

D

C

LIP 48A

LIP 23

94

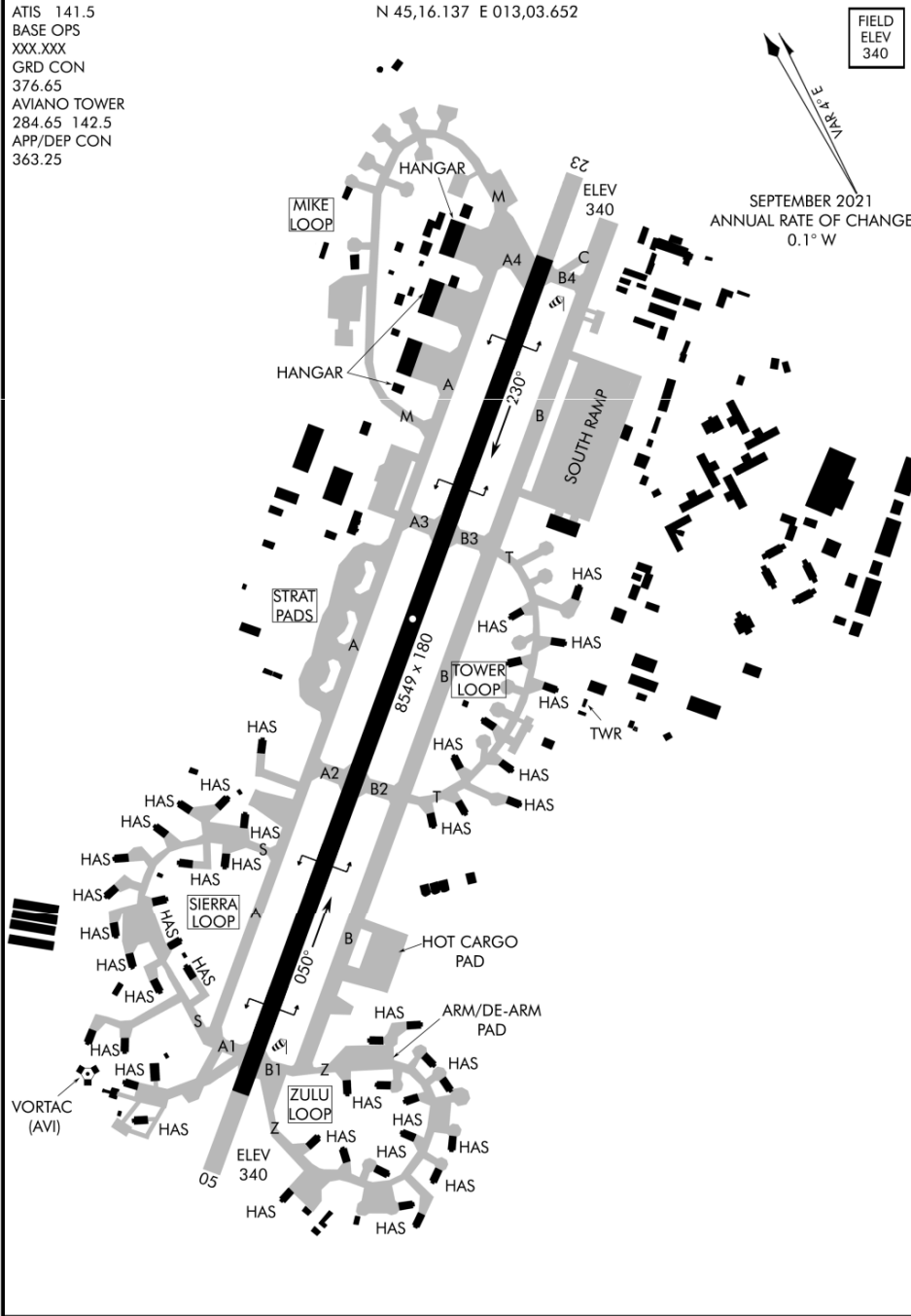
81

PPT 59 / SA-3

PPT 54

# AIRPORT DIAGRAM

AVIANO (LIPA)  
AVIANO, ITALY



AIRPORT DIAGRAM  
NOT FOR REAL NAVIGATION - FALCON 4 BMS ONLY  
Updated: 20JAN22

AVIANO, ITALY  
AVIANO (LIPA)

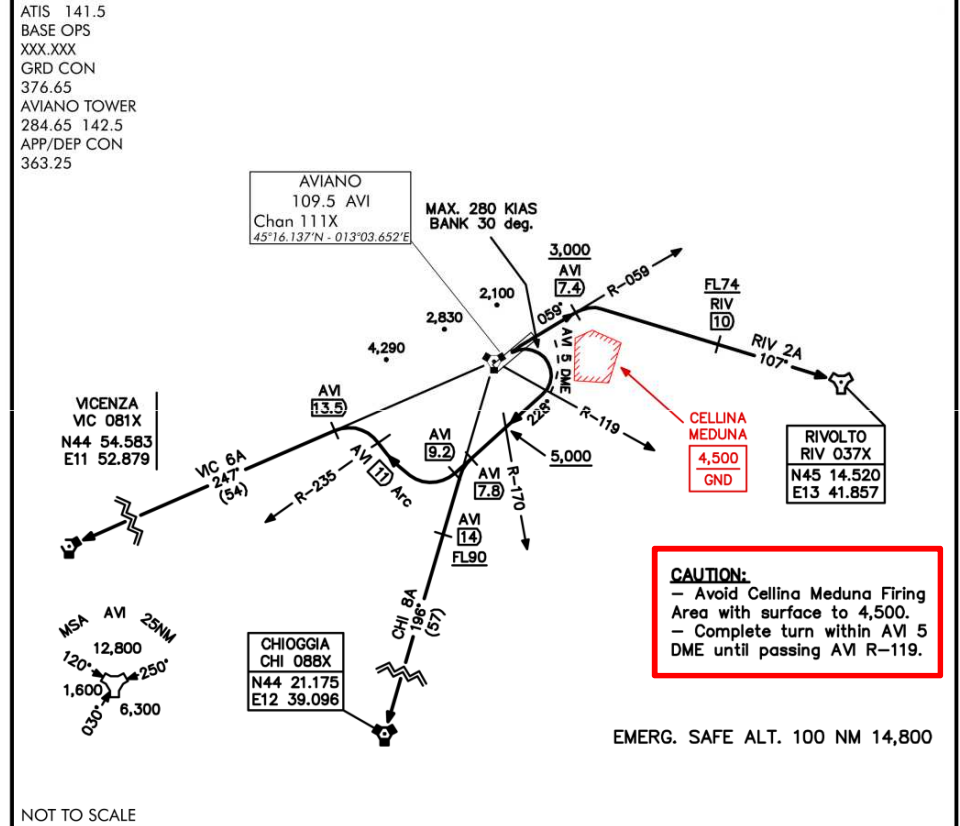


A  
V  
I  
A  
N  
O  
  
A  
I  
R  
  
B  
A  
S  
E



# RWY 05 DEPARTURE

AVIANO (LIPA)  
AVIANO, ITALY



**DEPARTURE ROUTE DESCRIPTION**

**CHI 8A DEPARTURE:**  
Climb right turn on HDG 228°. Cross AVI R-170 at 5,000 or above. At AVI DME 7.8 climb left turn to intercept AVI R-196 outbound. Cross AVI R-196 DME 14.0 at FL90 or above and continue outbound to CHI VORTAC. Thence...

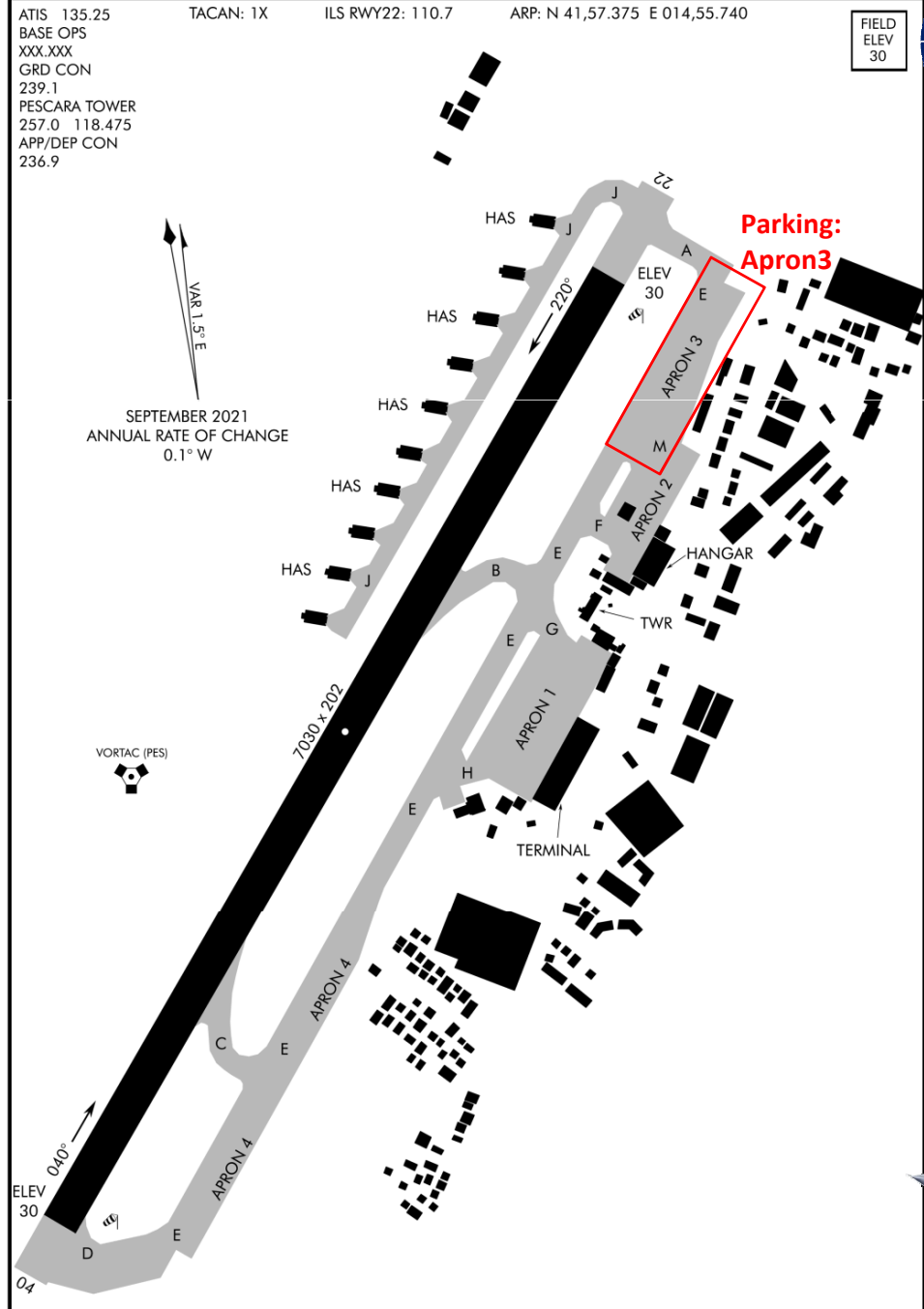
**RIV 2A DEPARTURE:**  
Climb on HDG 050° to intercept AVI R-059 outbound. Cross AVI R-059 DME 7.4 at 3,000 or above and climb right turn to intercept RIV R-287 inbound. Cross RIV R-287 DME 10.0 FL74 or above and continue inbound to RIV TACAN. Thence...

**VIC 6A DEPARTURE:**  
Climb right turn on HDG 228°. Cross AVI R-170 at 5,000 or above. At AVI DME 9.2 turn right to join AVI DME 11.0 arc. Then turn left to intercept AVI R-247 outbound to VIC VORTAC. Thence...

RWY 05 DEPARTURE  
NOT FOR REAL NAVIGATION - FALCON 4 BMS ONLY  
Updated: 20JAN22

AVIANO, ITALY  
AVIANO (LIPA)

BALKANS THEATER BMS  
**AIRPORT DIAGRAM**



**AIRPORT DIAGRAM**  
 NOT FOR REAL NAVIGATION - FALCON 4 BMS ONLY  
 Updated: 13JAN22

PESCARA (LIBP)  
 PESCARA, ITALY

PESCARA, ITALY  
 PESCARA (LIBP)

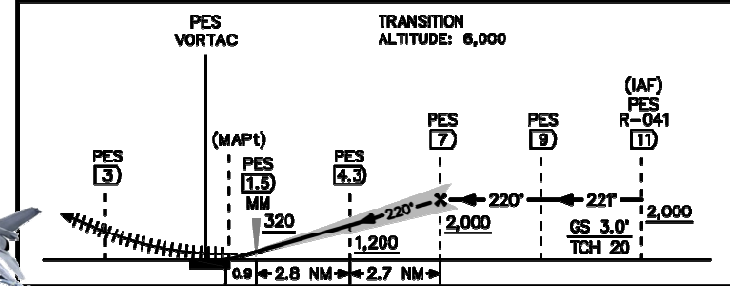
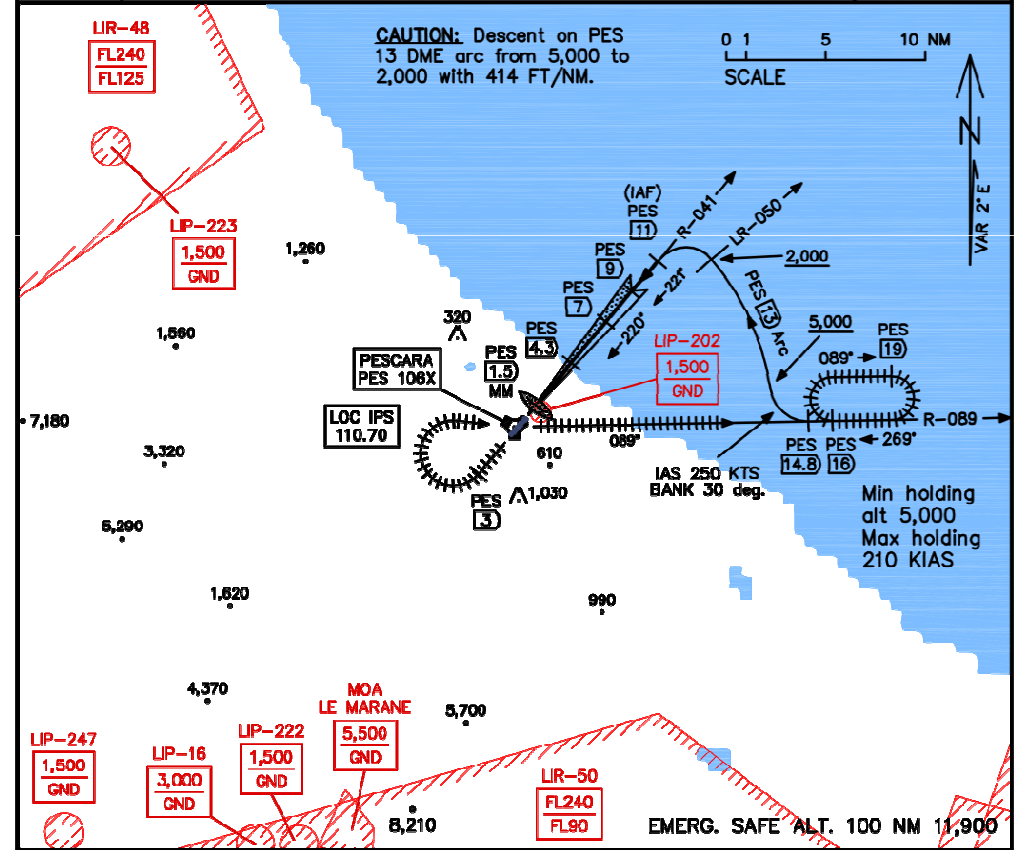


P  
E  
S  
C  
A  
R  
A  
  
A  
I  
R  
B  
A  
S  
E



**ANNEX2**  
**ILS/DME RWY 22**  
 PESCARA (LIBP)  
 PESCARA, ITALY

VORTAC PES Chan 106X	LOC IPS 110.70	ATIS -	APP CON 236.90	TOWER 257.00 118.475	GND CON 239.10	VORTAC GPS N41 57.303 E14 55.125
Final course 220		Rwy ldg 6.524		TDZE 30		



**MINIMUMS**

S-ILS 22  
 DA(H): 270 (240 AGL)  
 AT PES 1.3 DME  
 VIS 800M

S-LOC 22  
 MDA: 500 (470 AGL)  
 AT PES 2 DME  
 VIS 1,800M  
 TDZE 22: 30

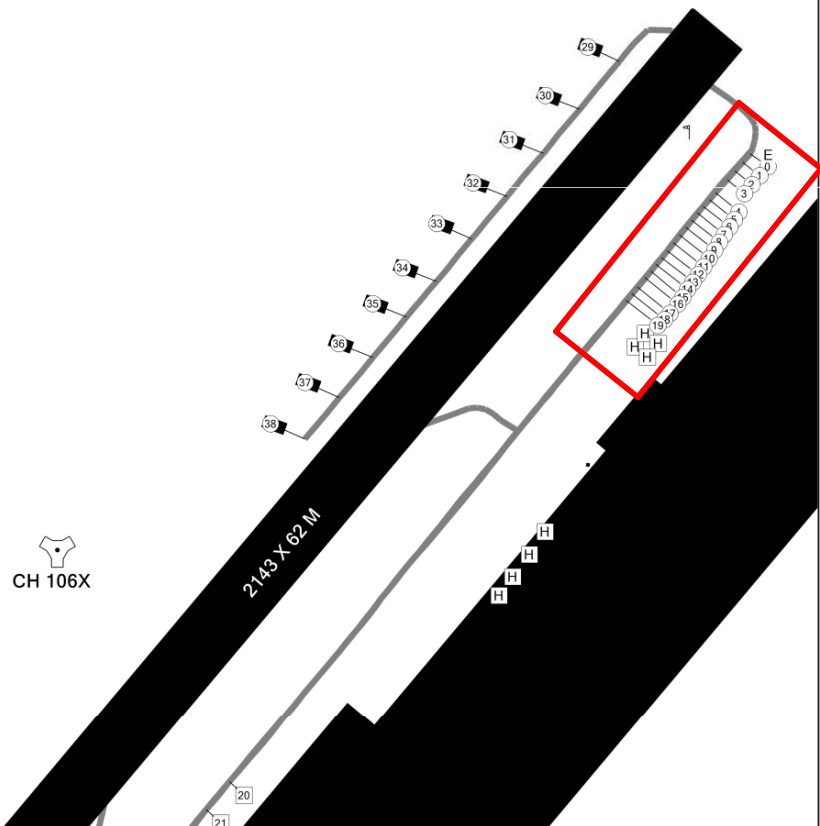
FALCON BMS 4.36  
 BALKANS THEATER  
**NOT FOR REAL NAVIGATION !**  
 Created 6 June 2019 by Nikos Efstratiou

# PESCARA Air Base – Parking Slots

Pescara Parking Chart RWY22

0	S	N41,57.631	E014,55.963
1	S	N41,57.623	E014,55.953
2	S	N41,57.615	E014,55.943
3	S	N41,57.607	E014,55.934
4	S	N41,57.592	E014,55.927
5	S	N41,57.585	E014,55.921
6	S	N41,57.579	E014,55.916
7	S	N41,57.572	E014,55.909
8	S	N41,57.566	E014,55.903
9	S	N41,57.559	E014,55.897
10	S	N41,57.552	E014,55.890
11	S	N41,57.545	E014,55.884
12	S	N41,57.538	E014,55.877
13	S	N41,57.532	E014,55.870
14	S	N41,57.526	E014,55.864
15	S	N41,57.519	E014,55.858
16	S	N41,57.513	E014,55.852
17	S	N41,57.505	E014,55.842
18	S	N41,57.500	E014,55.836
19	S	N41,57.495	E014,55.828
20	L	N41,57.092	E014,55.327
21	L	N41,57.068	E014,55.299
22	L	N41,57.043	E014,55.269
23	L	N41,57.017	E014,55.242
24	L	N41,56.991	E014,55.209
25	L	N41,56.966	E014,55.178
26	L	N41,56.940	E014,55.147
27	L	N41,56.910	E014,55.115
28	L	N41,56.879	E014,55.079
29	S	N41,57.733	E014,55.762
30	S	N41,57.691	E014,55.711
31	S	N41,57.654	E014,55.667
32	S	N41,57.617	E014,55.623
33	S	N41,57.582	E014,55.579
34	S	N41,57.544	E014,55.537
35	S	N41,57.513	E014,55.501
36	S	N41,57.479	E014,55.460
37	S	N41,57.446	E014,55.419
38	S	N41,57.410	E014,55.377

ATIS 135.250  
GND 239.100  
TWR 257.000 118.475  
DEP 236.900



Package	Callsign Pack	Aircraft Type	UHF	VHF	IDM	TCN	Task
<input checked="" type="radio"/>	2	2 F-16CM-52	375.850	142.650	XMT 10	12Y	SEAD
<input type="radio"/>		2 F-16CM-52	324.900	142.950	XMT 20	13Y	AI
<input type="radio"/>		2 F-16CM-52	277.975	140.050	XMT 30	14Y	AI
<input type="radio"/>		2 F-16CM-52	256.550	143.150	XMT 40	15Y	AI
<input type="radio"/>		3 F-16CM-52	377.875	138.575	XMT 50	16Y	AI

Support	AC Type	TACAN	UHF	LOC	Notes:
Tanker 1	Copper1 - KC-10	29Y	275.175	146 / 390	11:01 - 16:09
Tanker 2	Copper5 - KC-10	63Y	231.850	133 / 323	11:01 - 16:09
AWACS	Sentry6 - E-3		283.300	358 / 81	11:01 - 16:09
JSTAR					
FAC					

# Flight-Training 30. August 2022



**ROSTER Package 2 – SEAD/AI**

**TO: AVIANO AB 11:30Z  
ARR: PESCARA AB**

**Spade 4: Dro16, Bluebird, Opasi**

**Cobra 3: Hunter, TheWitch**

**Cobra 4: Cupra, Corran**

**Mako 6: BadCrow, Actros**

**Cyborg 5: n/n**

**WEATHER:**

Conditions@	<b>TAKE OFF:</b>
SITUATION:	Sunny
WIND:	240deg@ 4kts
VISIBILITY:	72km
TEMP:	27deg C
CLOUD BASE:	35,000-ft MSL; base
CON LAYER:	34,000 ft MSL; base

**Tendency: NOSIG**