

**Ferry-Flight IWAKUNI/JAP- GUNSAN/ROK**

1. TO: IWAKUNI AB
2. NAV „Feet Wet“
3. IP
4. „Surf Attack“ – Cargo, Tanker, ULSAN, OSA-II
5. T&G TSUSHIMA AB
6. GIMHAE AB – „Hot Pit“

- WP6-WP7: AAR  
WP7: IAF WOLF  
WP8: GUNSAN AB

**Weather-Forecast**  
FAIR, Temp. 23°C, Wind 200°, 8kts, VIS 60km, Cloud FEW 5000-7000ft  
MSL BASE, NOSIG, Sunrise 21:17Z

**AAR-Organisation (KC-10)**  
Copper7: Panther5, Banshee4  
Texaco6: Weasel6, Panther6

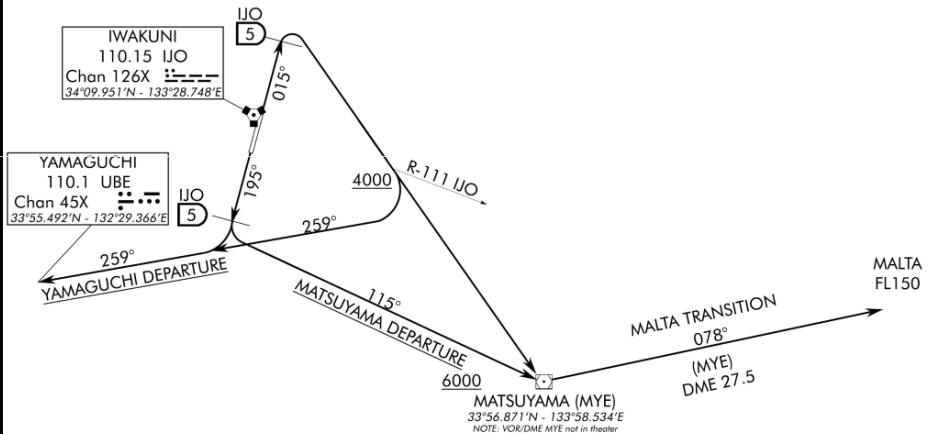
# RWY 02/20 DEPARTURE

IWAKUNI (RJOI)  
IWAKUNI, JAPAN

ATIS 128.4  
BASE OPS  
335.7  
GRD CON  
321.3  
IWAKUNI TOWER  
299.75 123.8  
APP/DEP CON  
331.4

Rwy	Knots	60	120	180	240	300	360
* 02	V/V (fpm)	230	460	690	920	1150	1650
† 02/20	V/V (fpm)	330	660	990	1320	1650	1980
‡ 20	V/V (fpm)	204	408	612	816	1020	1224

\*Minimum †ATC Climb Rate



NOT TO SCALE

## DEPARTURE ROUTE DESCRIPTION

### MATSUYAMA DEPARTURE:

RWY02: Climb heading 015° to 511, turn right at IJO 5DME to MYE VOR/DME. Cross MYE VOR/DME at 6000. Thence...

RWY20: Climb heading 195° to 511, turn left at IJO 5DME to MYE VOR/DME. Cross MYE VOR/DME at 6000. Thence...

### MALTA TRANSITION:

As depicted. Cross MALTA at FL150, maintain FL150 or higher as assigned.

### YAMAGUCHI DEPARTURE:

RWY02: Climb heading 015° to 511, turn right at IJO 5DME. Intercept IJO R 111 at or above 4000 and turn right HDG 259° to UBE VORTAC. Thence...

RWY20: Climb heading 195° to 511, turn right at IJO 5DME to HDG 259° to UBE VORTAC. Thence...

# RWY 02/20 DEPARTURE

NOT FOR REAL NAVIGATION - FALCON 4 BMS ONLY

Updated: 29NOV21

IWAKUNI, JAPAN  
IWAKUNI (RJOI)

© BENCHMARK SIMS

TSUSHIMA, JAPAN

# TACAN RWY 14

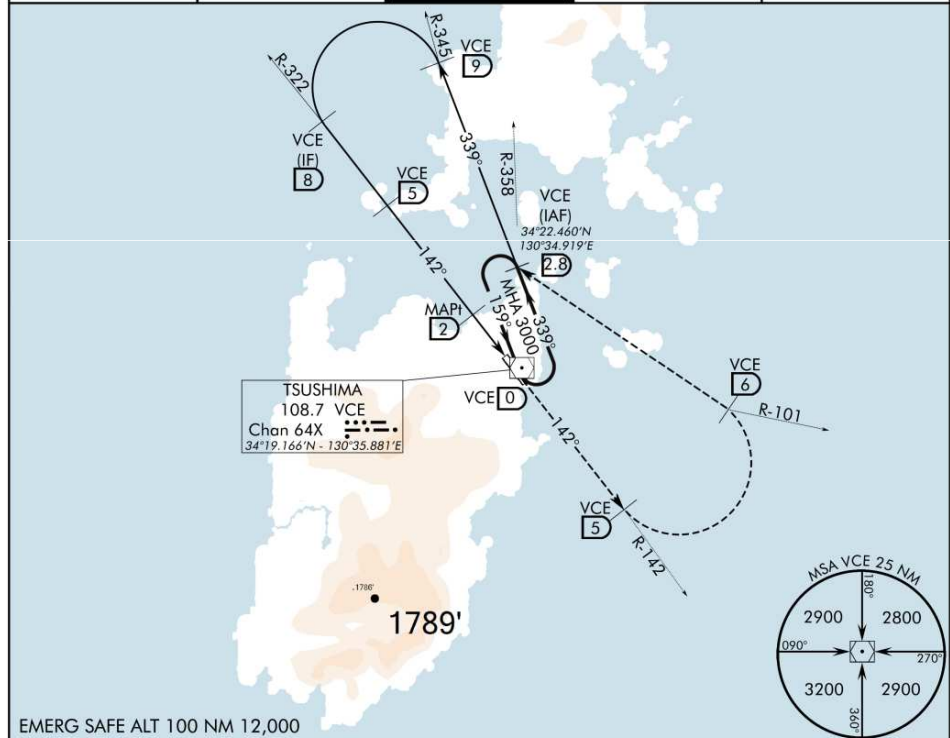
TSUSHIMA (RJDT)

TACAN VCE 108.7 Chan 64X	APCH CRS 322°	Rwy ldg TDZE 160 Arpt Elev 160	15,000
--------------------------------	------------------	--	--------

† MISSED APPROACH: Climb via VCE R-144 to 3000FT, turn left at VCE DME 5 and intercept R-101 at VCE DME 6 to VCE (IAF) DME 2.8 and hold as published. Contact ATC for instructions.

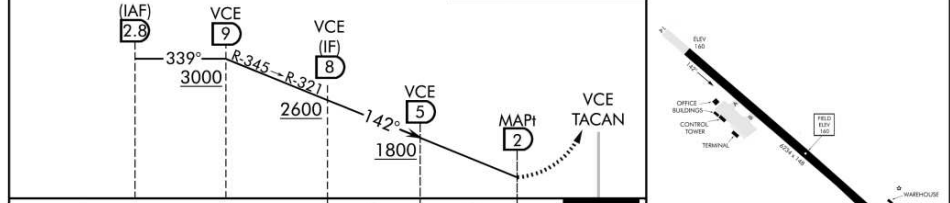


ATIS 124.325	APP/DEP 240.125	TOWER 231.9 126.2	GND 230.9	BASE OPS XXX.XXX
-----------------	--------------------	----------------------	--------------	---------------------



EMERG SAFE ALT 100 NM 12,000

Remain within 25 NM	VCE (IAF) 2.8	VCE 9	VCE (IF) 8	VCE 5	MAP1 2	VCE TACAN	ELEV 160	TDZE 160
---------------------	---------------	-------	------------	-------	--------	-----------	----------	----------



CATEGORY	C	D	E
S-TACAN-14	560'(550'AGL) Vis: 200ft-1600m	560'(550'AGL) Vis: 200ft-1600m	560'(550'AGL) Vis: 200ft-1600m
CIRCLING **	960'(950'AGL) Vis: 200ft-2000m	960'(950'AGL) Vis: 200ft-2000m	960'(950'AGL) Vis: 200ft-2000m

TSUSHIMA, JAPAN

34°19.451'N - 130°35.095'E

TSUSHIMA (RJDT)

# TACAN RWY 14

NOT FOR REAL NAVIGATION - FALCON 4 BMS ONLY

Updated: 08DEC21

© BENCHMARK SIMS

# TACAN RWY 18L

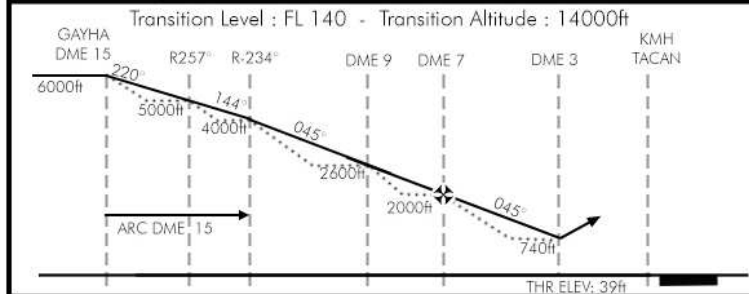
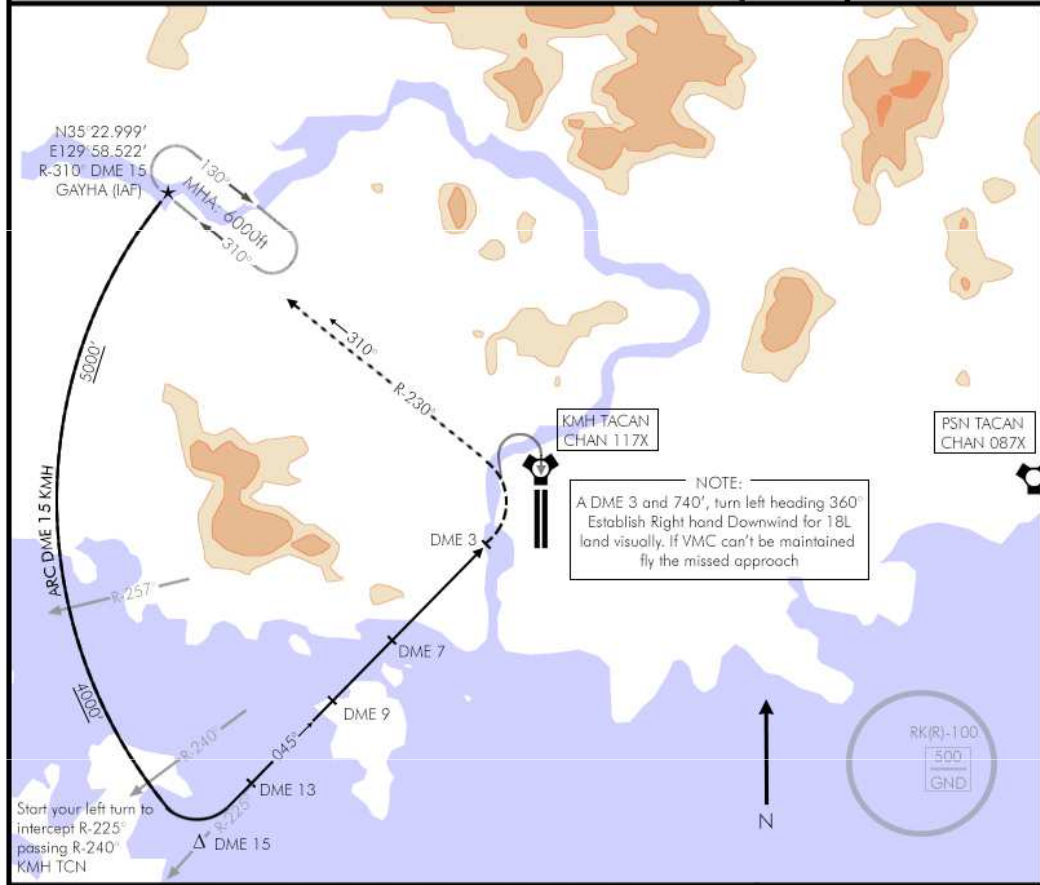
Update: 12JAN22

GIMHAE (RKP)  
SOUTH KOREA

TCN:	ATIS:	APP/DEP:	TWR:	TCN DA(H):	APP CRS:	GPS:	ELEV:
117X	126.65	225.1	233.3	740'(701')	045° R-225°	N35°13.558' E130°12.398'	039'

MISSED APPROACH: Climb to 6000 feet via left turn to intercept R-310° outbound KMH tacan. Hold at GAYHA as published. 6000'

MALSRL  
PAPIL PAPI



**MINIMA:**

TACAN: 740'(701'AGL)  
Vis: 700ft-1600m\*  
at DME3

Circling: 940'(901'AGL)  
Vis: 1000ft-2000m  
\*When ALS inop, increase vis to 2000m

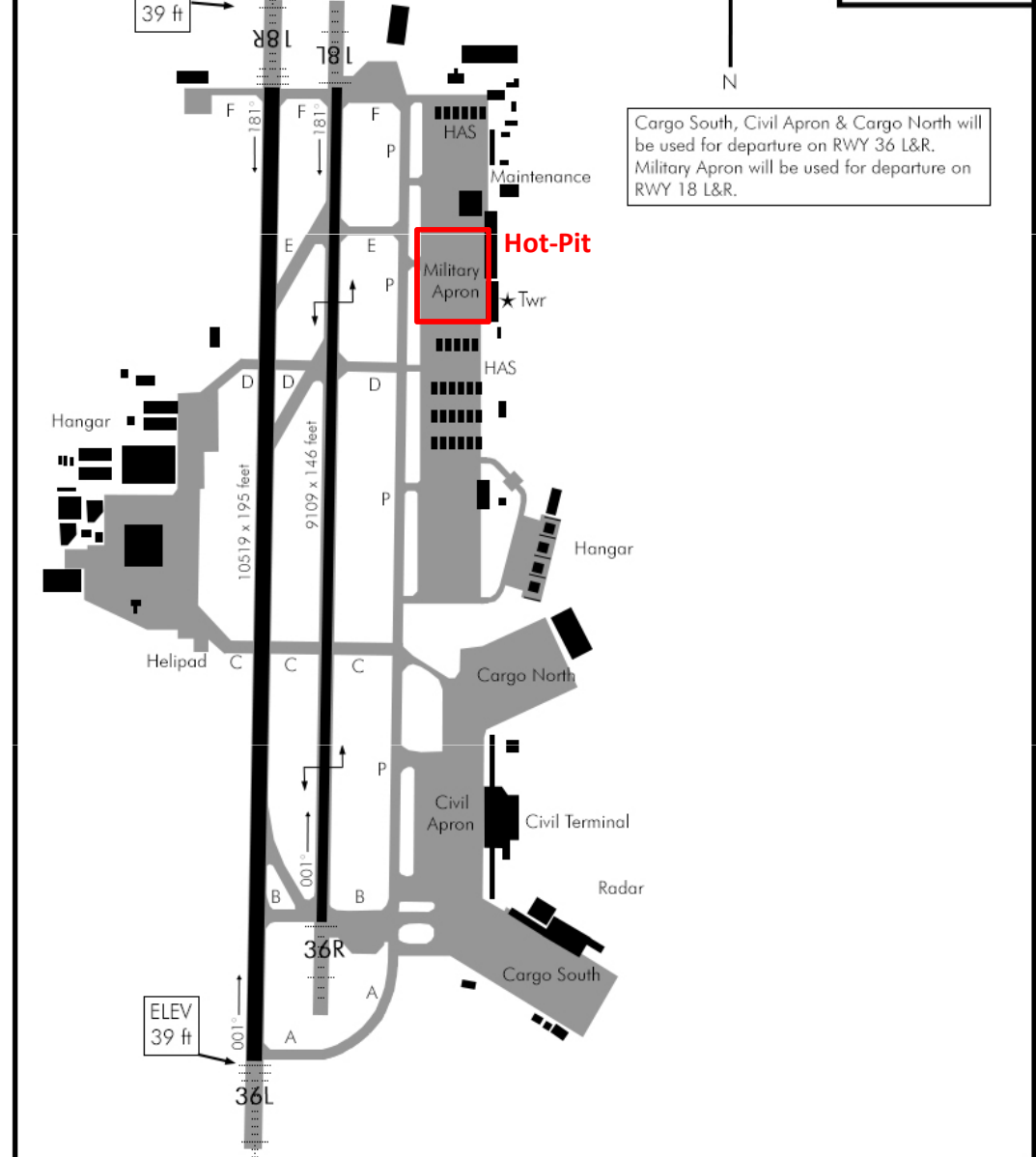
# AIRPORT DIAGRAM

Update: 12JAN22

GIMHAE (RKP)  
SOUTH KOREA

TCN:	ATIS:	GND:	TWR:	APP/DEP:	TA (ft) / TL:	GPS:	ELEV:
117X	126.65	274.8	233.3	225.1	14000/FL140	N35°13.558' E130°12.398'	039'

MSA 25 Nm  
5100ft  
3700ft  
2700ft



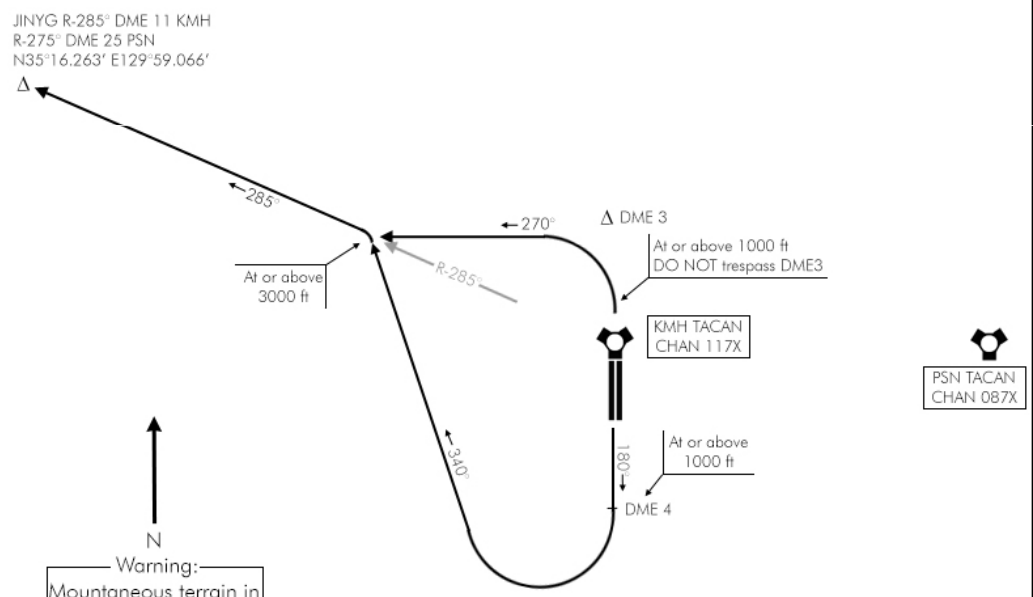
Cargo South, Civil Apron & Cargo North will be used for departure on RWY 36 L&R.  
Military Apron will be used for departure on RWY 18 L&R.

KTO BMS  
NAKDONG 3A DEPARTURE

Update: 12JAN22

GIMHAE (RKPK)  
SOUTH KOREA

TACAN:	TWR:	APP/DEP:	TRANS ALT:	TRANS LVL:	GPS:	ELEV:
117X	233.3	225.1	14000ft	FL140	N35°13.558' E130°12.398'	039'



Warning:  
Mountaneous terrain in  
airbase vicinity.  
Not to Scale

DEPARTURE ROUTE DESCRIPTION

**NAKDONG 3A SOUTH:** Climb on RWY heading until reaching DME 4 or 1000 ft whichever comes first. Then RIGHT climbing turn to heading 340° until intercepting R-285° outbound KMH. Cross at no less than 3000 ft. Proceed via R-285° KMH to JINYG. Cross at assigned altitude. Thence...

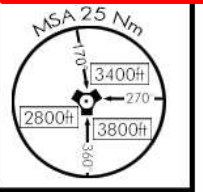
**NAKDONG 3A NORTH:** Climb on RWY heading until reaching 1000 ft. Then LEFT climbing turn heading 270° to intercept R-285° outbound KMH. Cross at no less than 3000 ft. Proceed via R-285° KMH to JINYG. Cross at assigned altitude. Thence...

KTO BMS  
ILS RWY 18

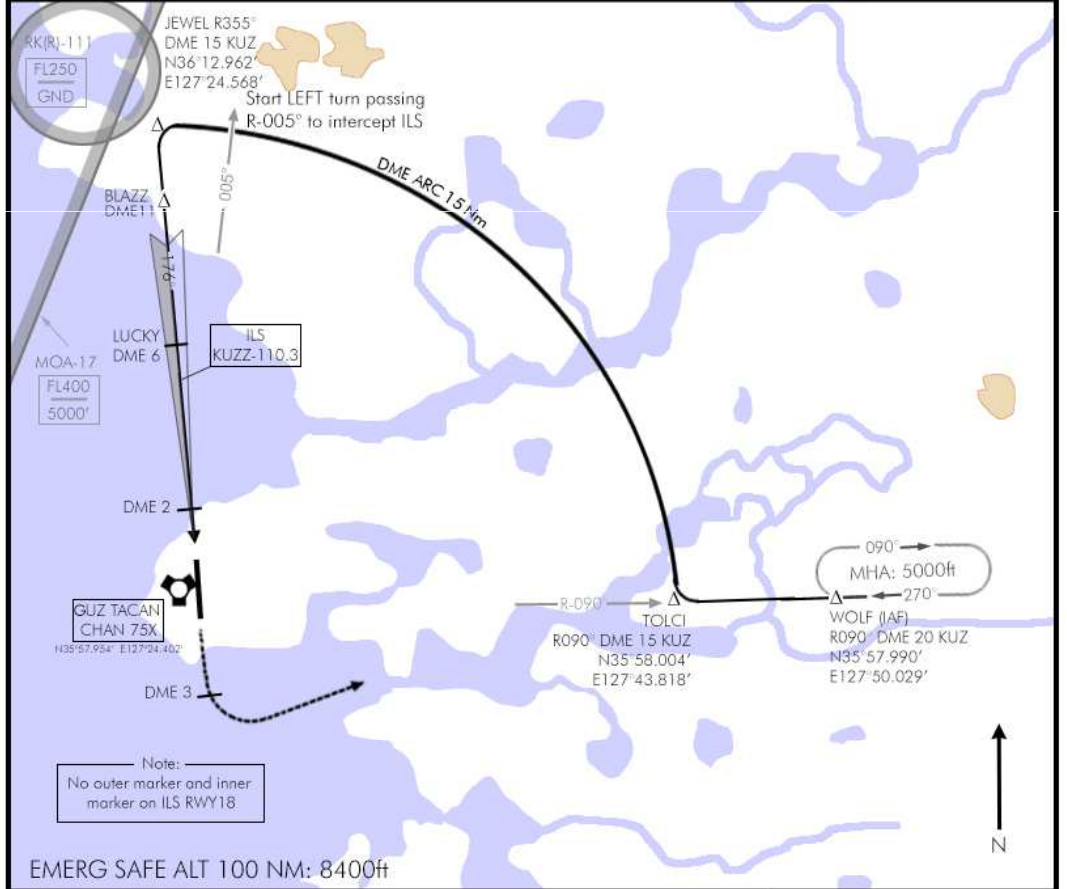
Update: 19MAY22

GUNSAN (RKJK)  
SOUTH KOREA

TCN:	ATIS:	APP/DEP:	TWR:	ILS:	ILS DA(H):	LOC:	GPS:	ELEV:
75X	120.225	292.65	292.3	110.3	210'(200')	176°	N35°57.554' E127°24.492'	10'

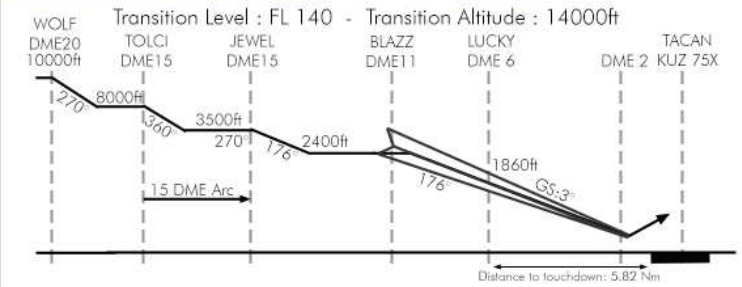


MISSED APPROACH: Climb straight ahead until DME 3 or reaching 2000ft, then LEFT climbing turn to 5000 direct TOLCI. Continue on R-090° outbound to WOLF IAF at DME 20. Hold as published at 5000.



Note:  
No outer marker and inner  
marker on ILS RWY18

EMERG SAFE ALT 100 NM: 8400ft



**MINIMA:**

ILS:	210'(200'AGL) 200ft-800m*
LOC:	470'(460' AGL) 300ft -1600m**
Circling:	670'(660'AGL) 600ft -2000m

\*When ALS inop, increase vis to 1200m  
\*\*When ALS inop, increase vis to 2000m