

Course  
Flight-Training  
- 02-21-2023-  
Package2, F-16-CM-52

TO/ARR: RIVOLTO AB,  
11:00Z, approx. 12:30Z  
ROSKA 1C to BRAVO  
WP2: EXIT  
-Own Navigation-

APP: IAF RIV (DME19), last  
WP

Mission-Order:

1. „Destroy target as briefed“
2. Low-angle-strafe  
AXALP Range (2 runs),  
= Vertical, Horizontal

Weather Forecast:

FAIR, 25°C, Wind 040°, 10-  
15 kts, VIS: 60 km, CLOUD  
BASE (2/8) 5000ft AGL,  
CAVOK, NOSIG

ROSTER:

Spade5 (DEAD1):

**Dro16, Tomahawk**

Banshee6 (DEAD2):

**Sneakpeek, Opasi**

Jackal1 (Strike1):

**Hunter, Actros**

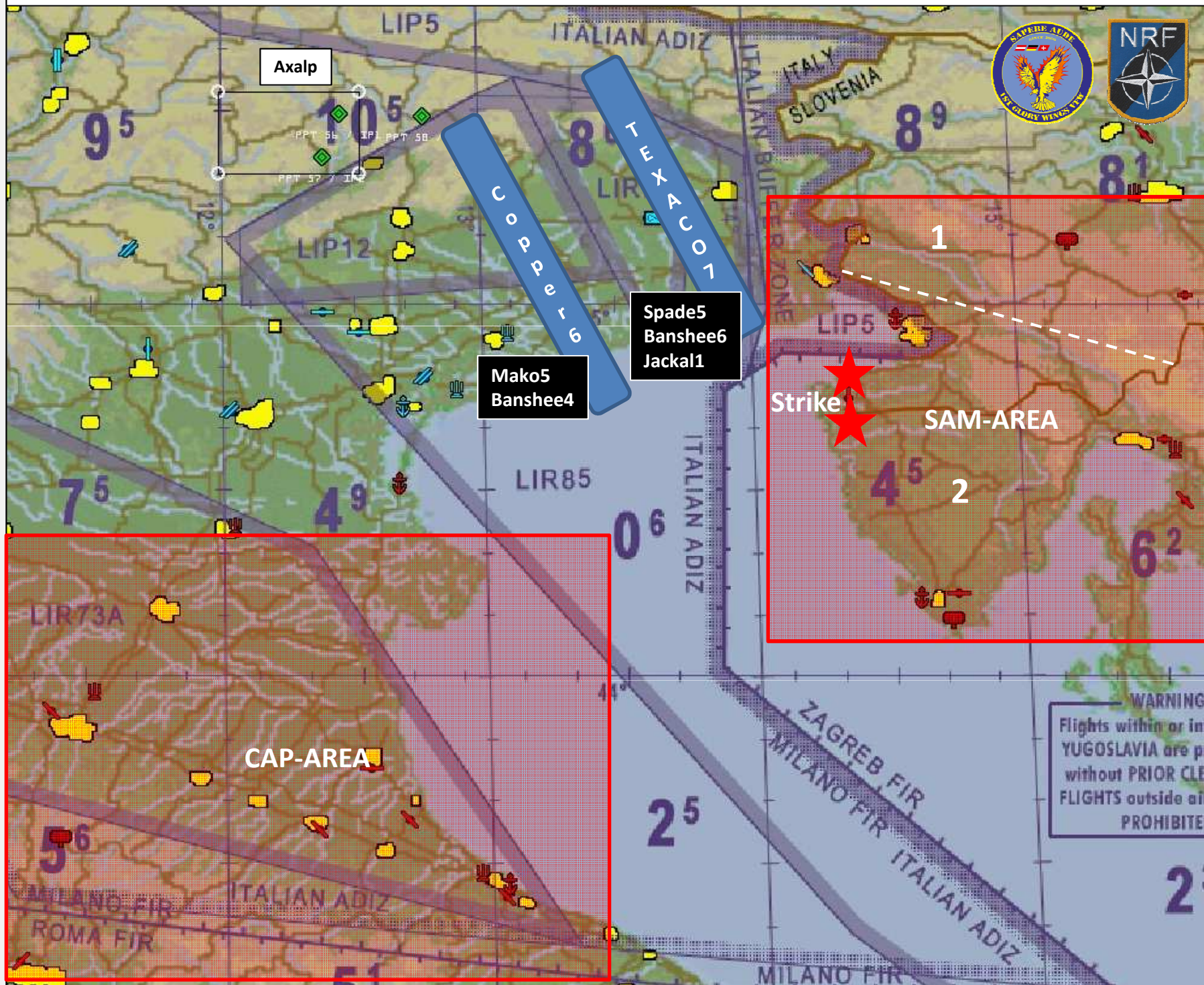
Mako5 (Strike2):

**Cupra, Bluebird**

Banshee4 (CAP):

**Stingray, Corran, Kiwi,**

**BadCrow**





44\* 48.314'  
ELEV n/a

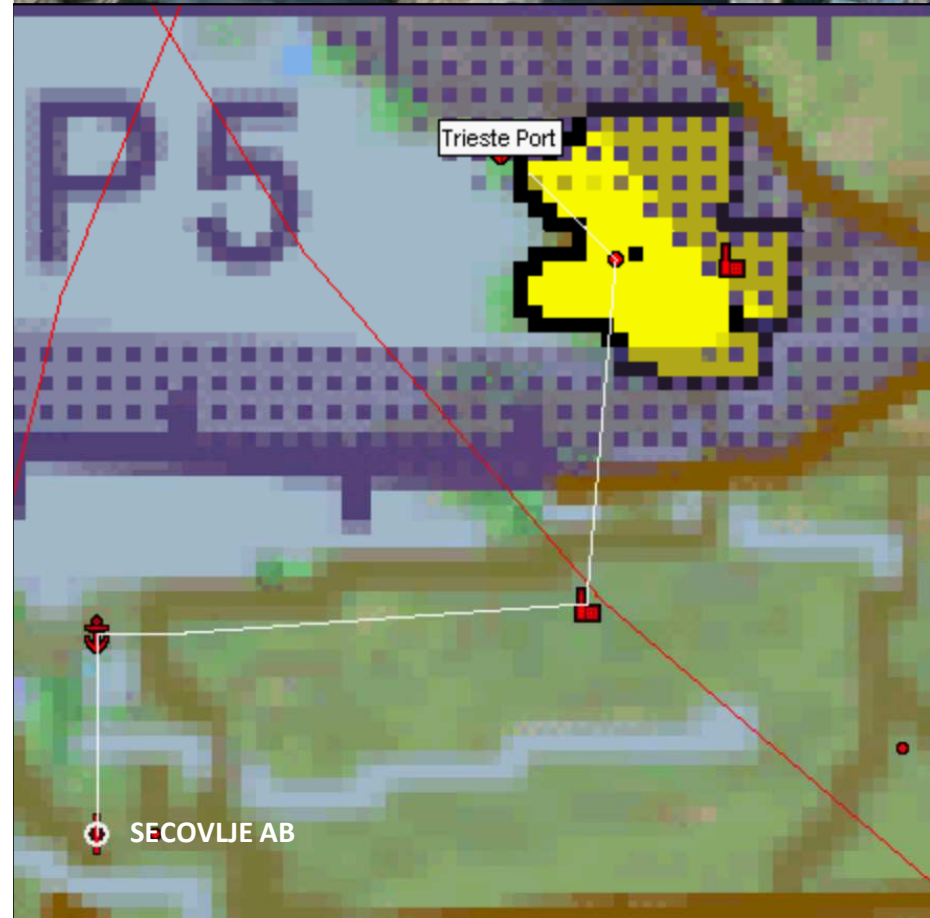
14\* 22.231'

# Target List Strike



**PORTOROZ Port**

**Main Target: „Destroy Containers“ (Actros, Bluebird)**



**Second Target:  
„S&D 794th Towed Gun  
Btl,  
moving from TRIESTE Port  
to SECOVLJE AB“**

**(Hunter, Cupra)**

**TOWED GUN BATTALION**

794th Towed Gun Battalion

**Owner** FRY

**Orders** Support Secovlje Airport

**ETA** 10:30:00Z

<b>Experience</b>	Regulars
<b>Supply</b>	Full
<b>Morale</b>	High
<b>Fatigue</b>	Normal
<b>Formation</b>	Column

Set by HQ

18 2A18 (D-30)  
12 KrAz F 255B  
1 UAZ-469  
15 KrAz T 255B

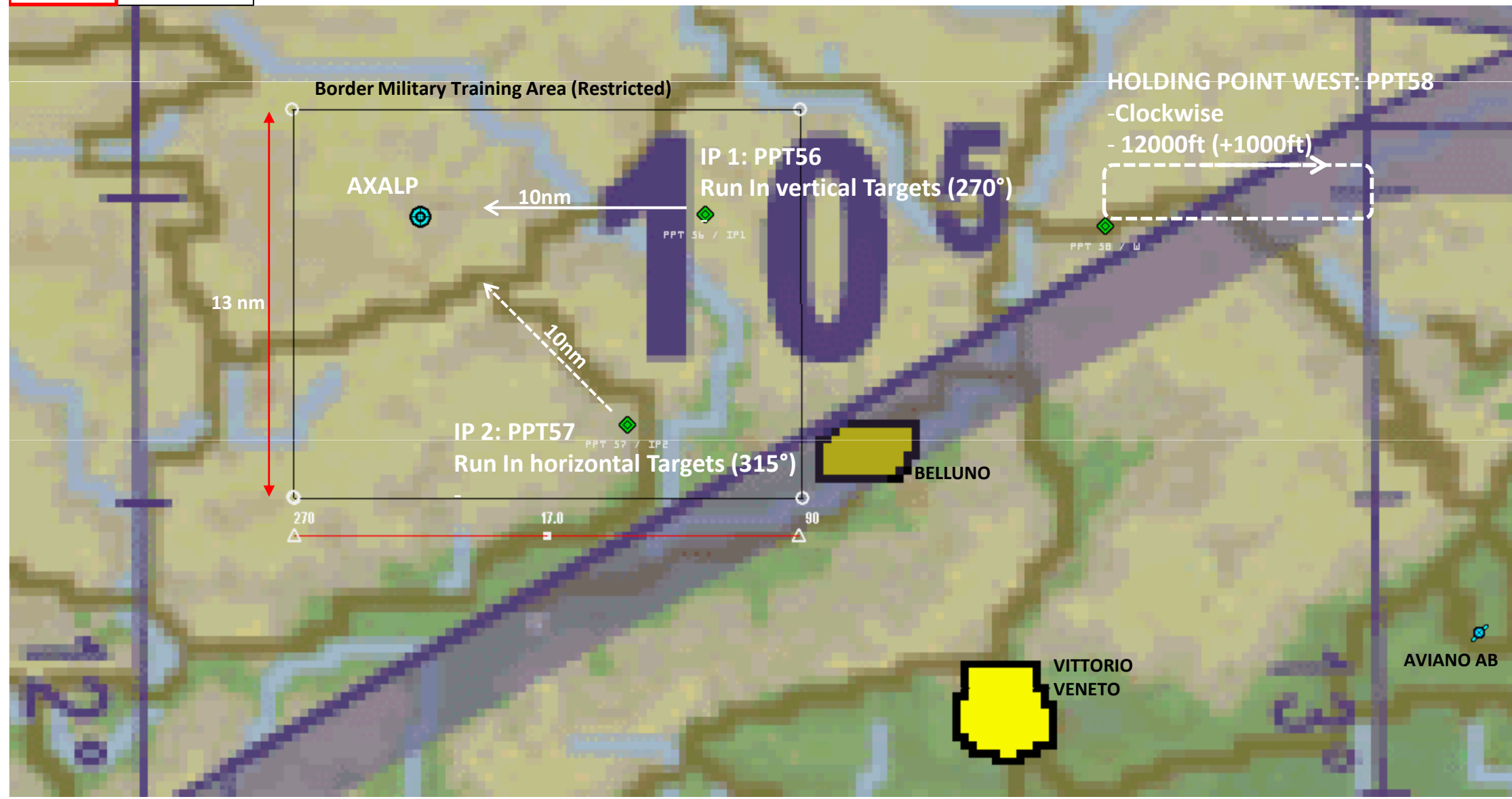
RANGE CONTROL  
233.8

GPS  
N 45°30.147'  
E 012°14.191

ELEV  
8475ft



# Coordination AXALP Range





# STRAFE = Air to Ground Gunnery on the vertical and horizontal targets



Flying an event is simply flying the pattern applying the above parameters. The most important point is the Base turn and the above settings let you know where you should be when turning base. As said before, the trick is to turn Base at the right moment.

Do not allow any error on base, if you are outside parameters, simply declare a dry pass and overfly the target at the Base altitude, keeping your place in the pattern.

RANGE CONTROL  
233.8

GPS  
N 45°30.147'  
E 012°14.191

ELEV  
8475ft



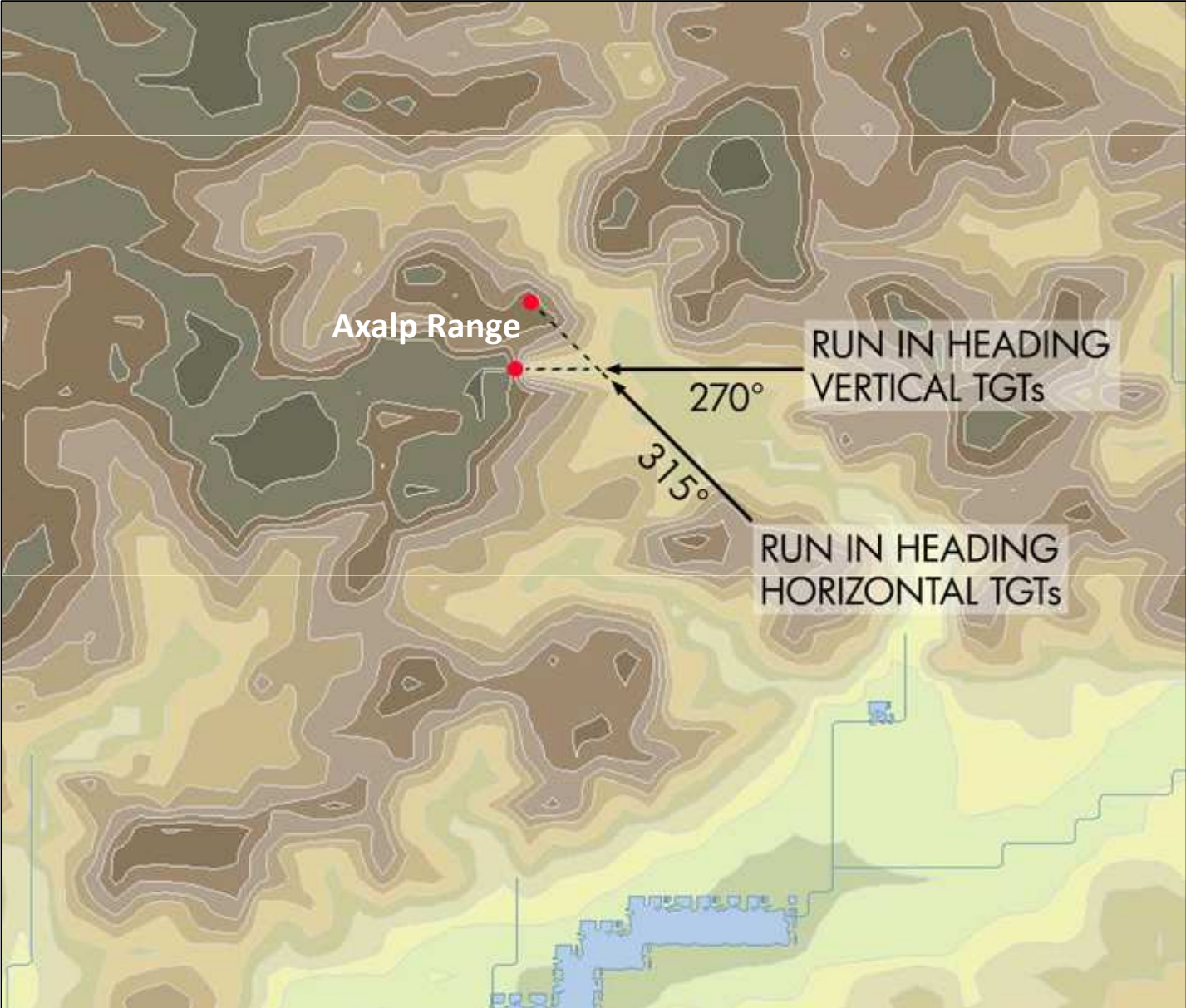
Axalp Range

RUN IN HEADING  
VERTICAL TGTs

270°

RUN IN HEADING  
HORIZONTAL TGTs

315°



ATIS 121.5  
 BASE OPS  
 XXX.XXX  
 GRD CON  
 354.0  
 RIVOLTO TOWER  
 242.475 139.50  
 APP/DEP CON  
 275.35

TACAN: 37X ILS: - ARP: N 45,13.579 E 013,39.770

FIELD  
 ELEV  
 170

# RIVOLTO (LIPI) UDINE, Italy

VVR 1.2° E  
 SEPTEMBER 2021  
 ANNUAL RATE OF CHANGE  
 0.1° W

