

# Operation „BEAR TRAP“

## Day 1: 04:10Z (13:10LT)

### SITUATION

Russia has decided to annex part of southeastern Korea. Russia's military intervention took place in the aftermath of a local revolution in the area of Pusan. South Korea and many world leaders condemned the annexation and consider it to be a violation of international law. However, since the UN is undecided, South Korea must enforce its claim independently. Within the next eight days Pusan, Sokcho and Pohang must be recaptured to prevent a final annexation.

### 159th KFS (F-16C-52)

TO: OSAN AB, 04:30Z (13:30LT) via DRAGGIN




ARR: 05:15Z via SAPKI

Jackal2, DEAD: Dro16, Sneakpeek, Tomahawk, Opasi  
 „Destroy SA-10, SA-2 nearby DAEGU City“


Gamble5, Escort: Stingray, BadCrow  
 „Prevent hostile aircraft engagement from package“

Hawkeye4, OCA: Cupra, Bluebird, Hunter, Actros  
 „Destroy DAEGU Air Base“




Gimhae Intl Airport (RKPK) Airbase  
 100% Operational

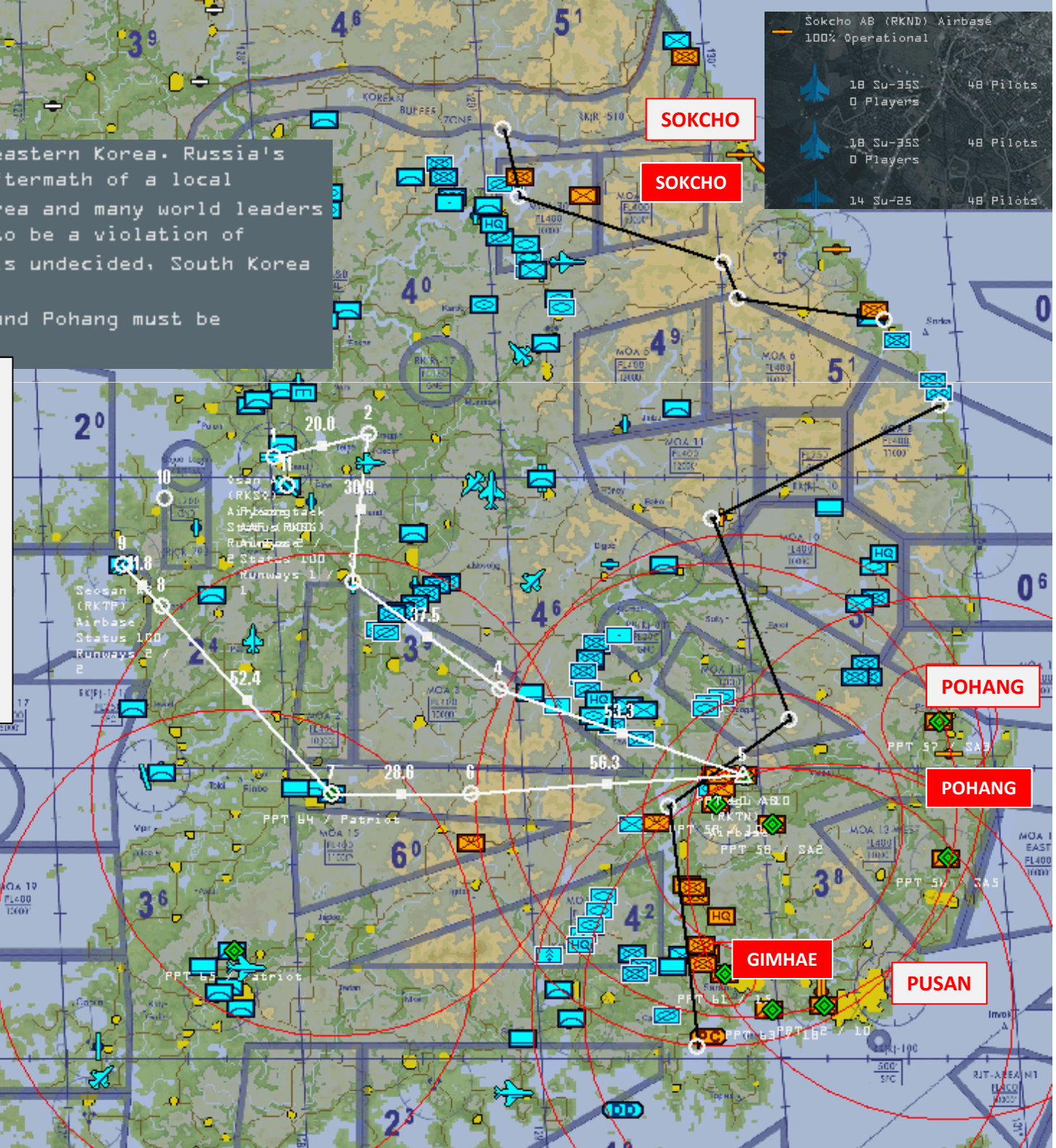
	18 MiG-29S	48 Pilots
	0 Players	
	22 Mi-28	48 Pilots
	0 Players	
	16 MiG-31	48 Pilots
	0 Players	

Pohang AB (RKTH) Airbase  
 100% Operational

	16 Su-35S	48 Pilots
	0 Players	

Sokcho AB (RKND) Airbase  
 100% Operational

	18 Su-35S	48 Pilots
	0 Players	
	18 Su-35S	48 Pilots
	0 Players	
	14 Su-25	48 Pilots
	0 Players	



SOKCHO

SOKCHO

POHANG

POHANG

GIMHAE

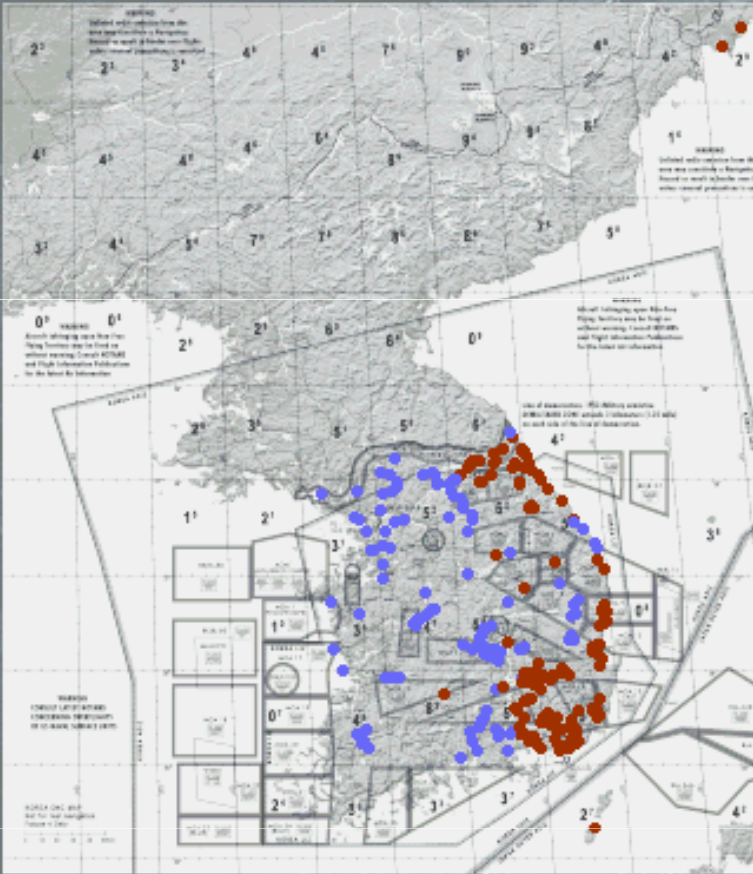
PUSAN



# Operation „BEAR TRAP“

## Day 1: 04:10Z (13:10LT)

### JSTARS REPLAY



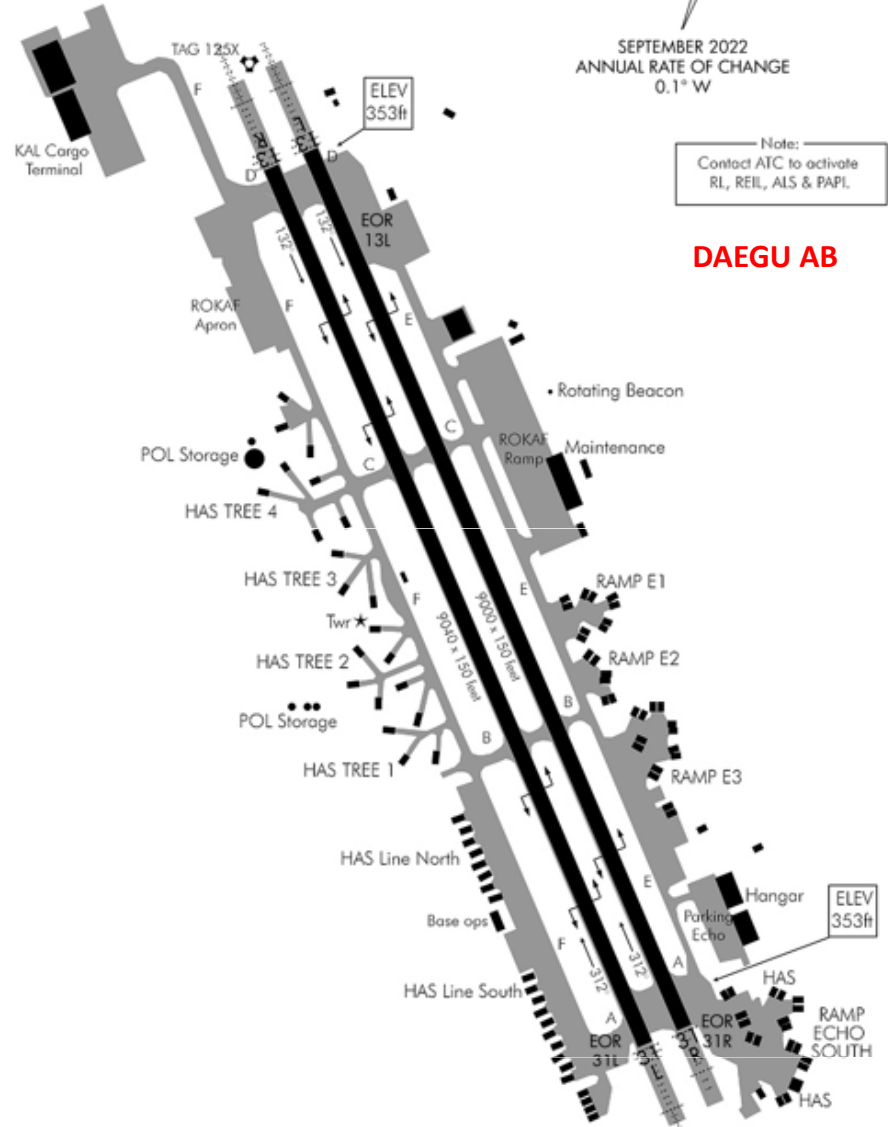
**AIR OPERATIONS:**  
 Defensive Priority: Jungwon City  
 Offensive Operations: Daegu City  
 OGA operation starting at: 06:00Z

**GROUND OPERATIONS:**  
 Ground Posture: Defensive  
 Defensive Priority: NONE

Air Defenses [dropdown]  
 Ground Power [dropdown]  
 Supply [dropdown]  
 Air Power [dropdown]

### RECENT UPDATES

- 04:09 Daeseong-dong Village was recaptured by ROK forces.
- 04:09 Pianling Village was recaptured by PRC forces.
- 04:09 Pulepu Village was recaptured by PRC forces.
- 04:09 Daeseong-dong Village was recaptured by ROK forces.
- 04:09 Ukkwimyong Bridge was recaptured by CIS forces.
- 04:09 Pianling Village was recaptured by PRC forces.
- 04:09 Pulepu Village was recaptured by PRC forces.
- 04:09 Elements of the CIS 1st Armored Division engaged ROK ground forces southwest of Ukkwimyong Town.
- 04:09 ROK air defenses fired on



**DAEGU AB**

### THREAT ANALYSIS:

**AIR-TO-AIR THREATS:**  
 CIS Su-35SCAP aircraft are expected to be operating near target area.  
 Be advised: Intelligence reports the following squadron(s) are currently operating out of Sokcho AB (RKND) Airbase:  
 -- 17th Fighter Squadron(CIS Su-35S) -- 100%strength  
 -- 18th Fighter Squadron(CIS Su-35S) -- 100%strength  
 -- 19th Attack Squadron(CIS Su-25) -- 100%strength

**SURFACE-TO-AIR THREATS:**  
 Known or suspected enemy air defenses along your flight path include:  
 -- SA-10 (S-300P)missile launchers 4 nm northeast of Gangnung City  
 -- HN-5A Squadmissile launchers 13 nm southwest of Sokcho Town  
 -- HN-5A Squadmissile launchers 13 nm southwest of Sokcho Town  
 -- SA-11 (9K37M1)missile launchers 9 nm west of Sokcho Town  
 -- SA-8 (9K33)missile launchers 2 nm northwest of Sokcho Town

**„Out“: GBU-39B, AGM-154, AGM-158, BLU-107, AIM-9X**

### WEATHER:

Conditions@	TAKE OFF:	TARGET AREA:	LANDING:
<b>SITUATION:</b>	Sunny	Poor	Sunny
<b>WIND:</b>	237deg@ 8kts.	192deg@ 1kts.	245deg@ 8kts.
<b>VISIBILITY:</b>	59km	4km	59km
<b>TEMP:</b>	6deg C.	3deg C.	8deg C.
<b>CLOUD BASE:</b>	32,000 ft MSL base	1,000 ft MSL base	32,000 ft MSL base
<b>CON LAYER:</b>	28,000 ft MSL base	24,000 ft MSL base	28,000 ft MSL base