



Operation

Pillars of Hercules

Part I: „Ferry Flight“

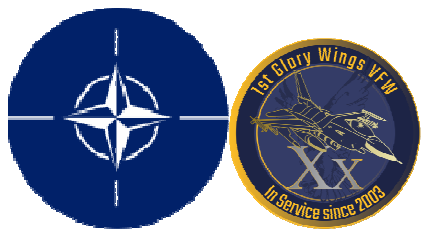
Mission Order

Transfer from MALLORCA /Spain

to

FARO/Portugal





NATO-Package 5798, F-16CM-50 - „Transfer“

TO: PALMA DE MALLORCA/Spain,
ARR: FARO/Portugal,
Distance: approx. 590 nm
Flight Time: approx. 1h 30min
-Warhawk2:
-Mako1:
-Mudhen7:
-Cajun6:
-Viper3:

08:00Z (09:00LT)
approx. 09:30Z

n/n
 n/n
 n/n
 n/n
 n/n

„Pillars of Hercules“

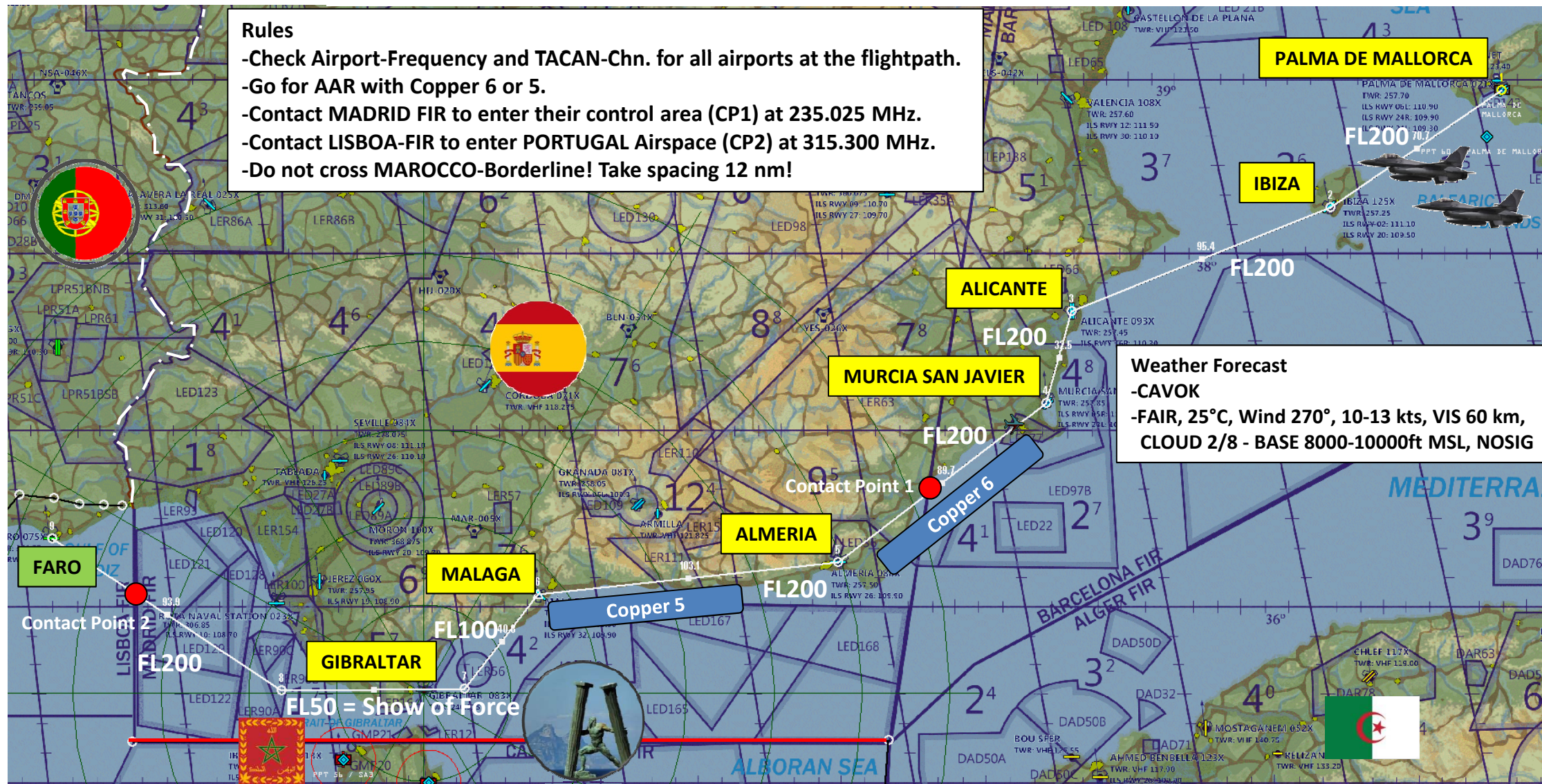
-Ferry Flight

Rules

- Check Airport-Frequency and TACAN-Chn. for all airports at the flightpath.
- Go for AAR with Copper 6 or 5.
- Contact MADRID FIR to enter their control area (CP1) at 235.025 MHz.
- Contact LISBOA-FIR to enter PORTUGAL Airspace (CP2) at 315.300 MHz.
- Do not cross MAROCCO-Borderline! Take spacing 12 nm!

Weather Forecast

- CAVOK
- FAIR, 25°C, Wind 270°, 10-13 kts, VIS 60 km, CLOUD 2/8 - BASE 8000-10000ft MSL, NOSIG



Frequency: ATIS = 119.250 MHz

PALMA Ground: 324.100 MHz, Tower: 257.700 MHz, Departure: 369.425



PALMA DE MALLORCA

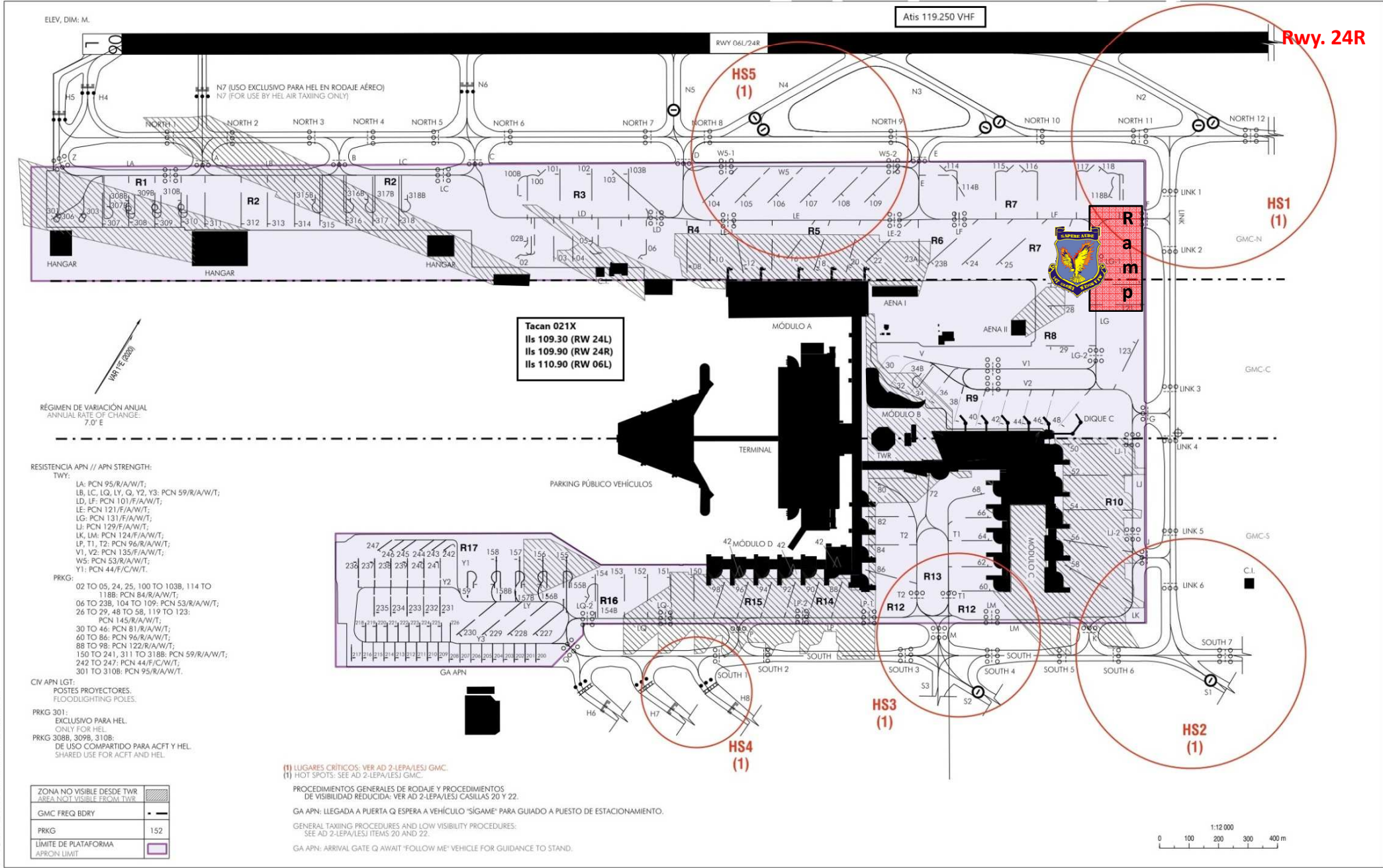
ELEV APN
4

TWR 257.700 UHF
GRD 324.100 UHF

Atis 119.250 VHF

PLANO DE ESTACIONAMIENTO
Y ATRAQUE DE AERONAVES-OACI

ELEV. DIM: M.



Rwy. 24R

HS5
(1)

HS1
(1)



Ramp

Tacan 021X
Ils 109.30 (RW 24L)
Ils 109.90 (RW 24R)
Ils 110.90 (RW 06L)

RÉGIMEN DE VARIACIÓN ANUAL
ANNUAL RATE OF CHANGE:
7.0 E

- RESISTENCIA APN // APN STRENGTH:
- TWY:
- LA: PCN 95/R/A/W/T;
 - LB, LC, LQ, LY, Q, Y2, Y3: PCN 59/R/A/W/T;
 - LD, LF: PCN 101/F/A/W/T;
 - LE: PCN 121/F/A/W/T;
 - LG: PCN 131/F/A/W/T;
 - LJ: PCN 129/F/A/W/T;
 - LK, LM: PCN 124/F/A/W/T;
 - LP, T1, T2: PCN 96/R/A/W/T;
 - V1, V2: PCN 135/F/A/W/T;
 - W5: PCN 53/R/A/W/T;
 - Y1: PCN 44/F/C/W/T.
- PRKG:
- 02 TO 05, 24, 25, 100 TO 103B, 114 TO 118B: PCN 84/R/A/W/T;
 - 06 TO 23B, 104 TO 109: PCN 53/R/A/W/T;
 - 26 TO 29, 48 TO 58, 119 TO 123: PCN 145/R/A/W/T;
 - 30 TO 46: PCN 81/R/A/W/T;
 - 40 TO 86: PCN 96/R/A/W/T;
 - 88 TO 98: PCN 122/R/A/W/T;
 - 150 TO 241, 311 TO 318B: PCN 59/R/A/W/T;
 - 242 TO 247: PCN 44/F/C/W/T;
 - 301 TO 310B: PCN 95/R/A/W/T.

- CIV APN LGT:
- POSTES PROYECTOROS. FLOODLIGHTING POLES.
- PRKG 301:
- EXCLUSIVO PARA HEL. ONLY FOR HEL.
- PRKG 308B, 309B, 310B:
- DE USO COMPARTIDO PARA ACFT Y HEL. SHARED USE FOR ACFT AND HEL.

ZONA NO VISIBLE DESDE TWR AREA NOT VISIBLE FROM TWR	
GMC FREQ BDRY	
PRKG	152
LÍMITE DE PLATAFORMA APRON LIMIT	

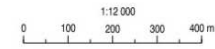
(1) LUGARES CRÍTICOS: VER AD 2-LEPA/LESJ GMC.
(1) HOT SPOTS: SEE AD 2-LEPA/LESJ GMC.

PROCEDIMIENTOS GENERALES DE RODAJE Y PROCEDIMIENTOS DE VISIBILIDAD REDUCIDA: VER AD 2-LEPA/LESJ CASILLAS 20 Y 22.

GA APN: LLEGADA A PUERTA Q ESPERA A VEHÍCULO "SIGAME" PARA GUIADO A PUESTO DE ESTACIONAMIENTO.

GENERAL TAXIING PROCEDURES AND LOW VISIBILITY PROCEDURES: SEE AD 2-LEPA/LESJ ITEMS 20 AND 22.

GA APN: ARRIVAL GATE Q AWAIT "FOLLOW ME" VEHICLE FOR GUIDANCE TO STAND.



CAMBIOS: ZONA NO VISIBLE DESDE TWR, EDIFICIO, CHANGES: AREA NOT VISIBLE FROM TWR, BUILDING

Para uso exclusivo en la simulación aérea de Falcon BMS

PLAYA ONE DEPARTURE

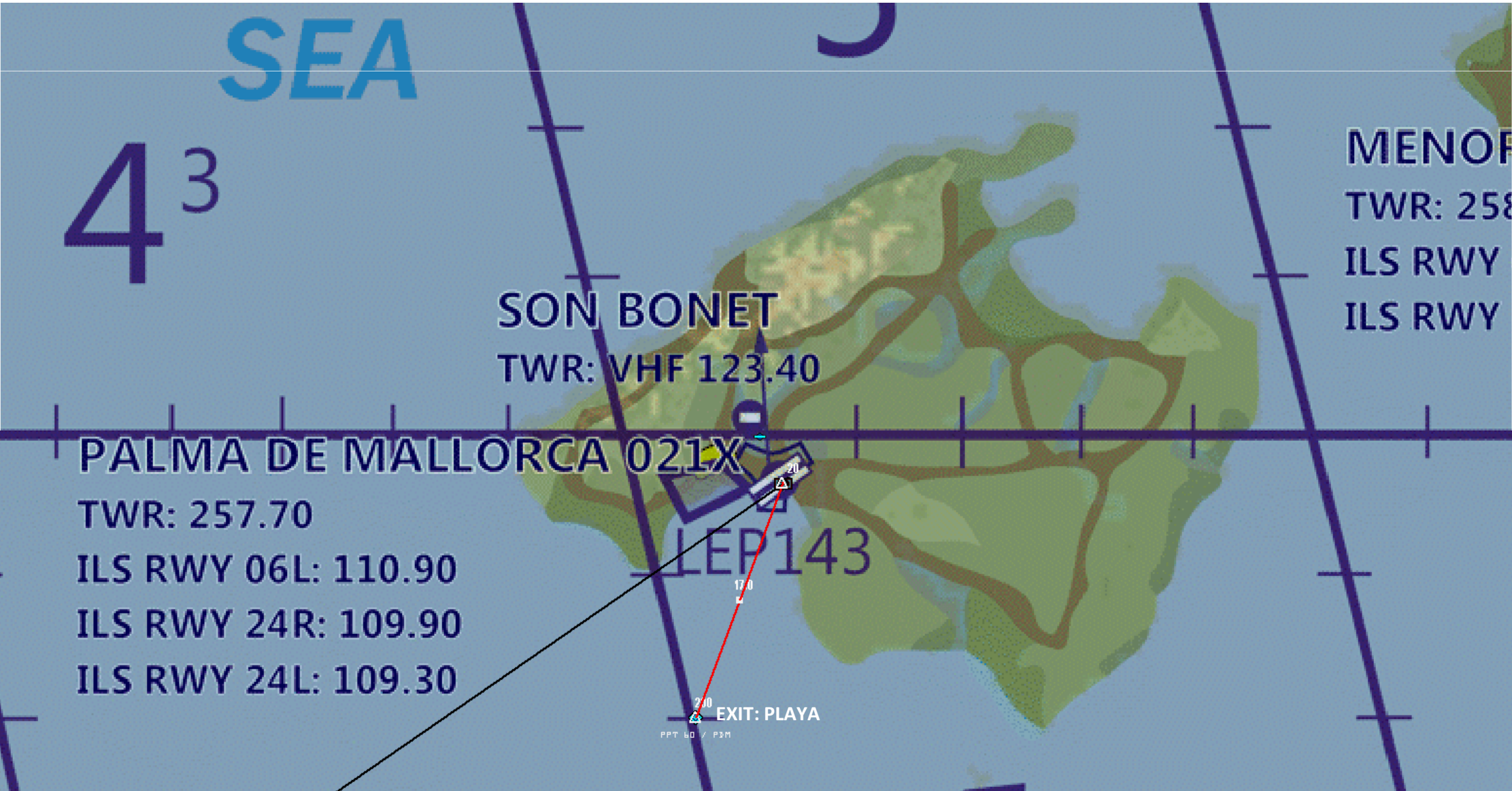


DEPARTURE ROUTE DESCRIPTION

Take off Rwy. 24

Climb on runway heading direct DME3 MALLORCA tacan, max. 3000ft AGL. Proceed to intercept R-200° outbound direct „Exit Point“ PLAYA (DME20), Thence own navigation to WP2, FL200.

„Head’s up, we have a lot of civil air traffic surrounding the airport!!“





Check!

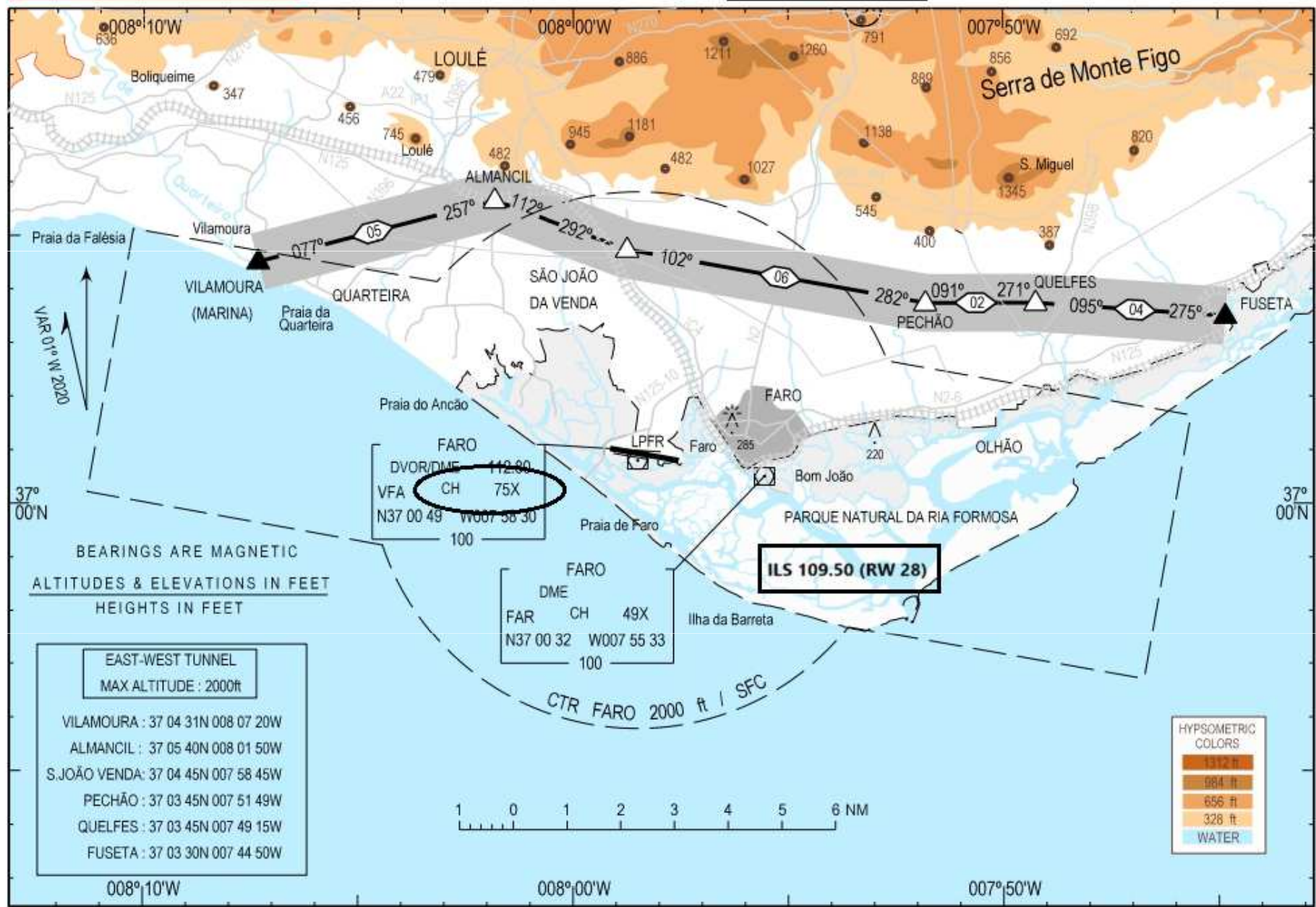
WP	Airport	ATC	TACAN	ATIS
2	IBIZA	253.800	125X	119.805
3	ALICANTE	251.600	093X	120.080
4	MURCIA SAN JAVIER	389.450	077X	-
5	ALMERIA	234.950	088X	119.055
6	MALAGA	258.700	082X	124.480
7	GIBRALTAR	264.875	083X	-





NO VALIDO PARA VUELO REAL

APP 376.800 UHF
TWR 376.750 UHF
GRD 235.200 UHF
ATIS 124.200 VHF



ROTAS VISUAIS NA TMA DE FARO
VISUAL ATIS ROUTES IN FARO TMA

Para uso exclusivo en la simulación aérea de Falcon BMS

FARO International Airport

Aeroporto de Faro, IATA-Code: FAO, ICAO-Code: LPFR)



ARR ATIS:	FARO ATIS	--	124.200 MHz [7]
ARR APPROACH:	FARO Approach	376.800 MHz [7]	--
ARR TOWER:	FARO Tower	376.750 MHz [8]	120.750 MHz [8]
ARR GROUND:	FARO Ground	235.200 MHz [9]	--

