



„Operation Husky – second run“

Package 3740, UHF=6 (349.000)

TS – Flight 1 Scout1 (Strike), Take-off: 08:00LOC **PUSAN Air Base**

R O S T E R

VHF: 1 (138.050)

Stingray Sohlo Corran Flash

Fhr Angriffsteile DOG14 Set TIMBER (Link16)**

TS – Flight 2 Tempest1 (Strike), Take-off: 08:02LOC

R O S T E R

VHF: 2 (138.100)

Freelancer Hitman Cester Opasi

****Leads setzen alle Flightleads des Packages im Datenlink. Bei Ausfall übernimmt das „Neusetzen“ der Lead Tempest1 oder bei dessen „Ausscheiden“ ein Lead der folgenden Flights nach Absprache.**

R A D I O /Nav

- D A T E N

Package 3740, UHF=7 (377.100)

TS – Flight 3 Spirit1 (Strike), Take-off: 08:04LOC

R O S T E R

VHF: 3 (138.200)

Dro16 Friefox Varion Kiwi

MC u. Fhr Angriffsteile DOG13

TS – Flight 4 Tiger1 (Strike), Take-off: 08:06LOC

R O S T E R

VHF: 4 (126.200)

Jaws Wesley Popy Bluebird

TS – Flight 5 Wildcat1 (Strike), Take-off: 08:08LOC

R O S T E R

VHF: 5 (134.250)

Cupra TheWitch

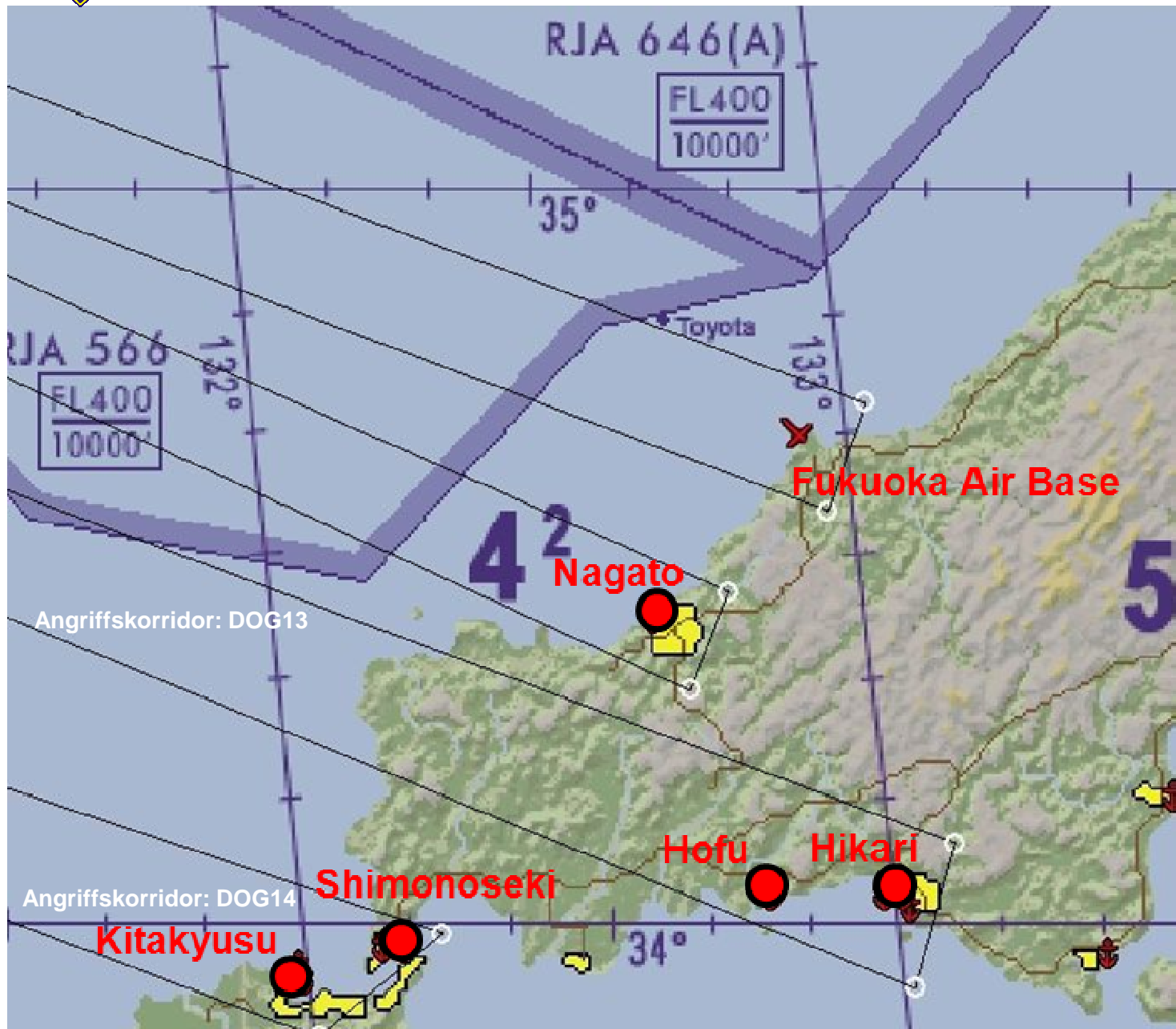
Flight/	Scout1		Tempest1		Spirit1		Tiger1		Wildcat1	
Frequenz	UHF	VHF	UHF	VHF	UHF	VHF	UHF	VHF	UHF	VHF
1. Ramp-Area										
- UHF- Backup	6	-	7	-	8	-	9	-	10	-
- UHF/VHF-Tactical	15	1	15	2	15	3	15	4	15	5
2. „Ready for Taxi“	15	1	15 *	2	15 *	3	15 *	4	15	5
3. Holding Line	15	1	15	2	15	3	15	4	15	5
4. Exit Point	6	1	6	2	7	3	7	4	7	5
5. IAF (Approach)	16 *	1	16 *	2	16 *	3	16 *	4	16*	5
6. Ramp-Area	16	1	16	2	16	3	16	4	16	5

- Vorgaben: DTC**
- 15 = DEP: - KIMHAE Air Base = s. Anlage
 - 16 = ARR: - SACHON Air Base = s. Anlage
 - 17 = Alternate: = KIMHAE Air Base
 - Übernahme der grafischen Ergänzungen gem. Datei (DTC)
 - Abfrage und „Eindrehen“ QNH vor der Landung
 - bei Flughöhen >14.000ft set QNH = 1013 hPa

* Ab- u. Anflugkoordination über Towerfrequenz (kurz)

Bei Störungen VHF-Kanal (Träger n. Abschuss): Backup = Kanal +7

Bei Ausfall ICV: Backup mittels TS. Broadcast-Funktion überprüfen!



2. Angriff: im Korridor DOG13/14
- Scout1/Tempest1 auf Kitakyusu Port/Shimonoseki Port, Ziele gem. Matrix
 - Spirt1/Tiger1/Wildcat1 auf Nagato Port, Ziele gem. Matrix



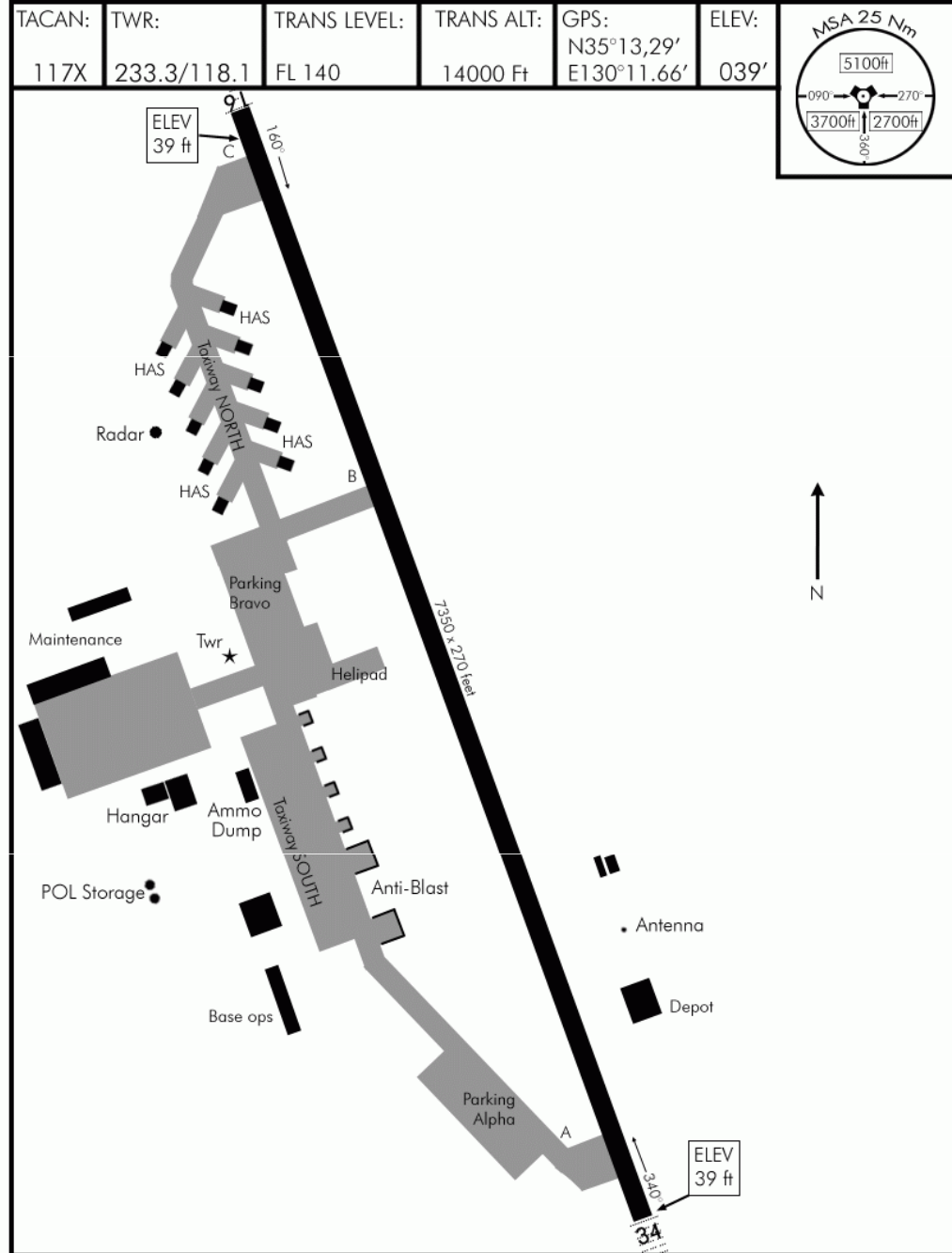
Zielmatrix Package 3723

Team/Way point	TO Local Time	Landing ca.	Ordnance Grundbeladung, Zusatz gem. Auftrag	5 TOT + Zielzuweisung	Package No./Reihenfolge Link16
Scout1	08:00	08:47	2x AIM-120C, 2x IR,IS-T, Centerliner, 8x GBU-12B/B	08:20:30, Flughöhenvorgabe: 20.000ft, nördl. Hafen von KITAKYSU, 4x U-Boot, 2x Warehouse, 2x Shipping Dock	1
Tempest1	08:02	08:51	2x AIM-120C, 2x IRIS-T, Centerliner, 4x GBU-12B/B, 2x AGM-65G	08:23, Flughöhenvorgabe: 21.000ft, SHIMONOSEKI Port, westl. Teil, 2x Tanker, Warehouse, 4x Dock	2
Spirit1	08:04	09:01	2x AIM-120C, 2x IRIS-T, Centerliner, 4x GBU-12B/B, 2x AGM-65G	08:27, Flughöhenvorgabe: 22.000ft, HIKARI Port, nördl. Teil, 2x Truppentransporter, 2x U-Boot, 4x Warehouse	3
Tiger1	08:06	09:03	2x AIM-120C, 2x IRIS-T, Centerliner, 4x GBU-12B/B, 2x AGM-65G	08:29, Flughöhenvorgabe: 23.000ft, HIKARI Port, südl. Teil, 2x Truppentransporter, Warehouse, 5x U-Boote im Trockendock	4
Wildcat1 (2-ship)	08:08	09:05	2x AIM-120C, 2x IRIS-T, Centerliner, 6x AGM-65B, 2x AGM-65G	08:31, Flughöhenvorgabe: 24.000ft, südl. Teil HOFU Port, <u>SP</u> : Truppentransporter	5
<u>Achtung:</u> Take-off: KIMHAE Air Base	Landing: SACHON Air Base	Wind aus Norden			

AIRPORT DIAGRAM

Date: 29 Nov 2009

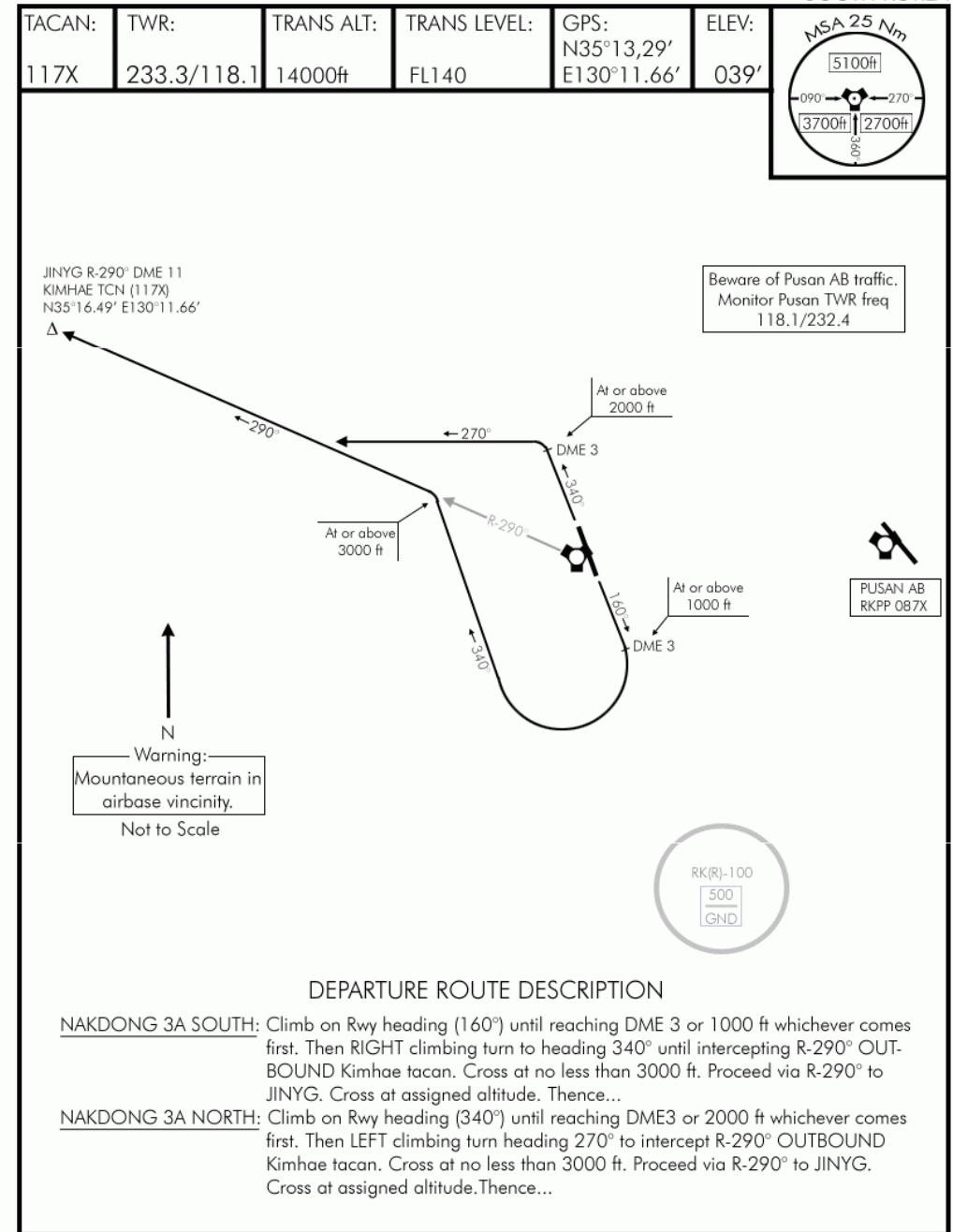
KIMHAE INTL (RKP)
SOUTH KOREA



NAKDONG 3A DEPARTURE

Date: 22 June 2005

KIMHAE INTL (RKP)
SOUTH KOREA



DEPARTURE ROUTE DESCRIPTION

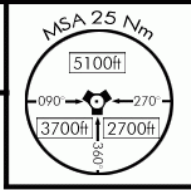
NAKDONG 3A SOUTH: Climb on Rwy heading (160°) until reaching DME 3 or 1000 ft whichever comes first. Then RIGHT climbing turn to heading 340° until intercepting R-290° OUTBOUND Kimhae tacan. Cross at no less than 3000 ft. Proceed via R-290° to JINYG. Cross at assigned altitude. Thence...

NAKDONG 3A NORTH: Climb on Rwy heading (340°) until reaching DME3 or 2000 ft whichever comes first. Then LEFT climbing turn heading 270° to intercept R-290° OUTBOUND Kimhae tacan. Cross at no less than 3000 ft. Proceed via R-290° to JINYG. Cross at assigned altitude. Thence...

NAKDONG 4A DEPARTURE Date: 29 Nov 2009

KIMHAE INTL (RKPK)
SOUTH KOREA

TACAN:	TWR:	TRANS ALT:	TRANS LEVEL:	GPS:	ELEV:
117X	233.3/118.1	14000ft	FL140	N35°13.29' E130°11.66'	039'

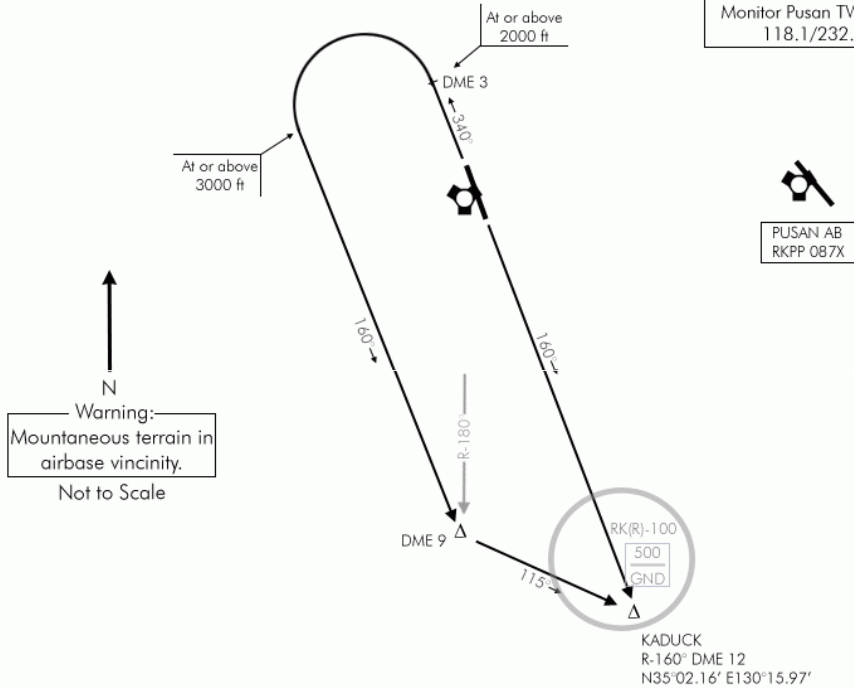


DEPARTURE ROUTE DESCRIPTION

NAKDONG 4A SOUTH: Climb on Rwy heading (160°) and proceed via R-160° OUTBOUND to KADUCK. Cross KADUCK at assigned altitude. Thence...

NAKDONG 4A NORTH: Climb on Rwy heading (340°) until reaching DME3 or 2000 ft whichever comes first. Then LEFT climbing turn heading 160° until crossing R-180° Kimhae Tacan at approx DME 9. Turn LEFT direct to KADUCK on heading 115°. Cross KADUCK at assigned altitude. Thence...

Beware of Pusan AB traffic.
Monitor Pusan TWR freq
118.1/232.4



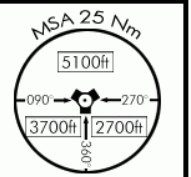
Warning:
Mountaneous terrain in
airbase vicinity.
Not to Scale

TACAN RWY 16

Date: 29 Nov 2009

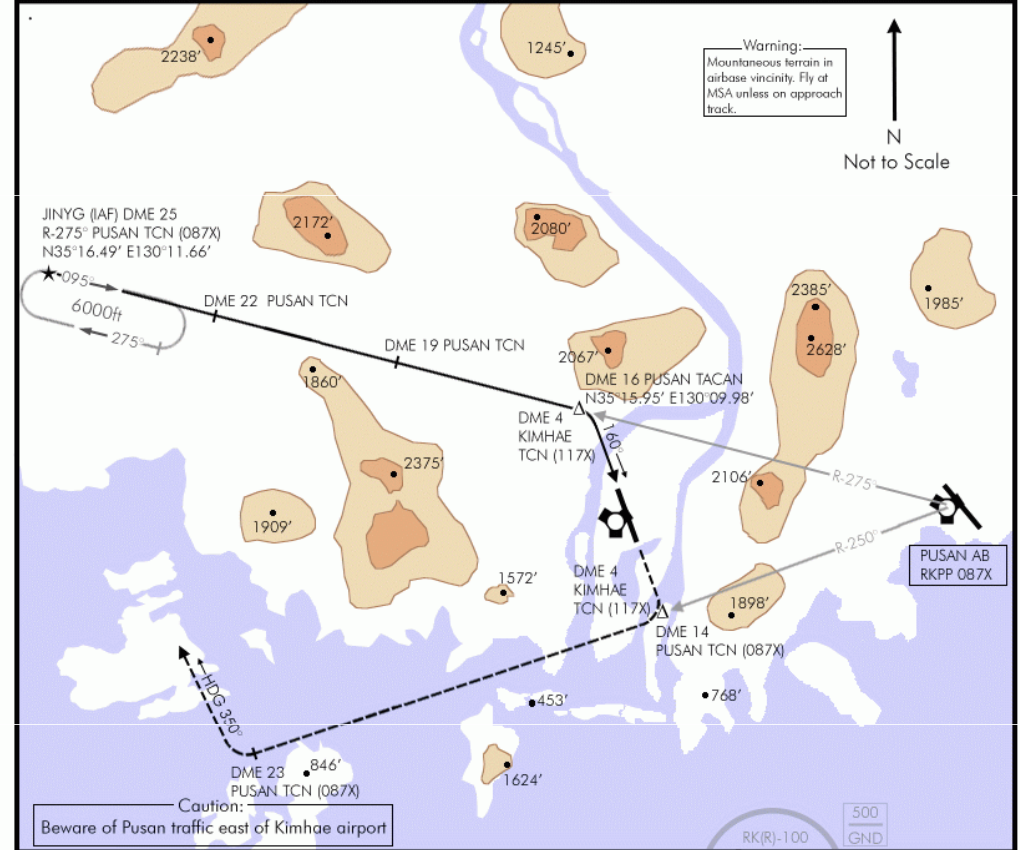
KIMHAE INTL (RKPK)
SOUTH KOREA

TACAN:	TWR:	TACAN DA(H)	GPS:	ELEV:
117X Kimhae/087X Pusan	233.3/118.1	739' (700' AGL)	N35°13.29' E130°11.66'	039'



MISSED APPROACH: Climb on runway heading to DME4 Kimhae TCN then climbing RIGHT turn to 6000' to intercept R-250° outbound Pusan Tcn. At DME 23 Pusan Tcn, RIGHT turn to 350° direct to JINYG.

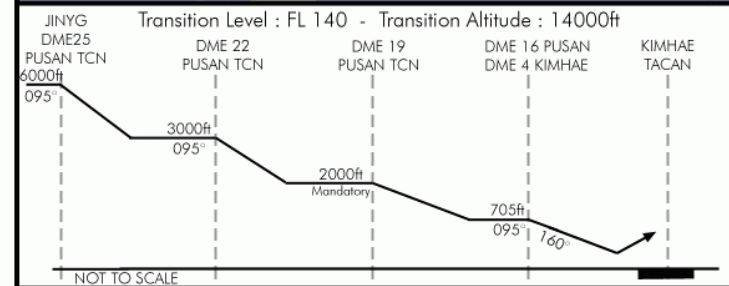
MALSF
PAPI



Warning:
Mountaneous terrain in
airbase vicinity. Fly at
MSA unless on approach
track.

N
Not to Scale

Caution:
Beware of Pusan traffic east of Kimhae airport

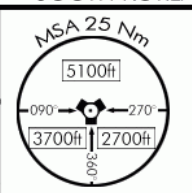


Transition Level : FL 140 - Transition Altitude : 14000ft	
JINYG DME25 PUSAN TCN	KIMHAE TACAN
DME 22 PUSAN TCN	DME 4 KIMHAE
DME 19 PUSAN TCN	
DME 16 PUSAN TCN	
DME 4 KIMHAE	
MINIMA:	
TACAN (DA): 739' (700'AGL)*	
AT DME 16 PUSAN TCN (087X) AND DME 4 KIMHAE TCN (117X)	
*When ALS inop, increase vis to 1200m	

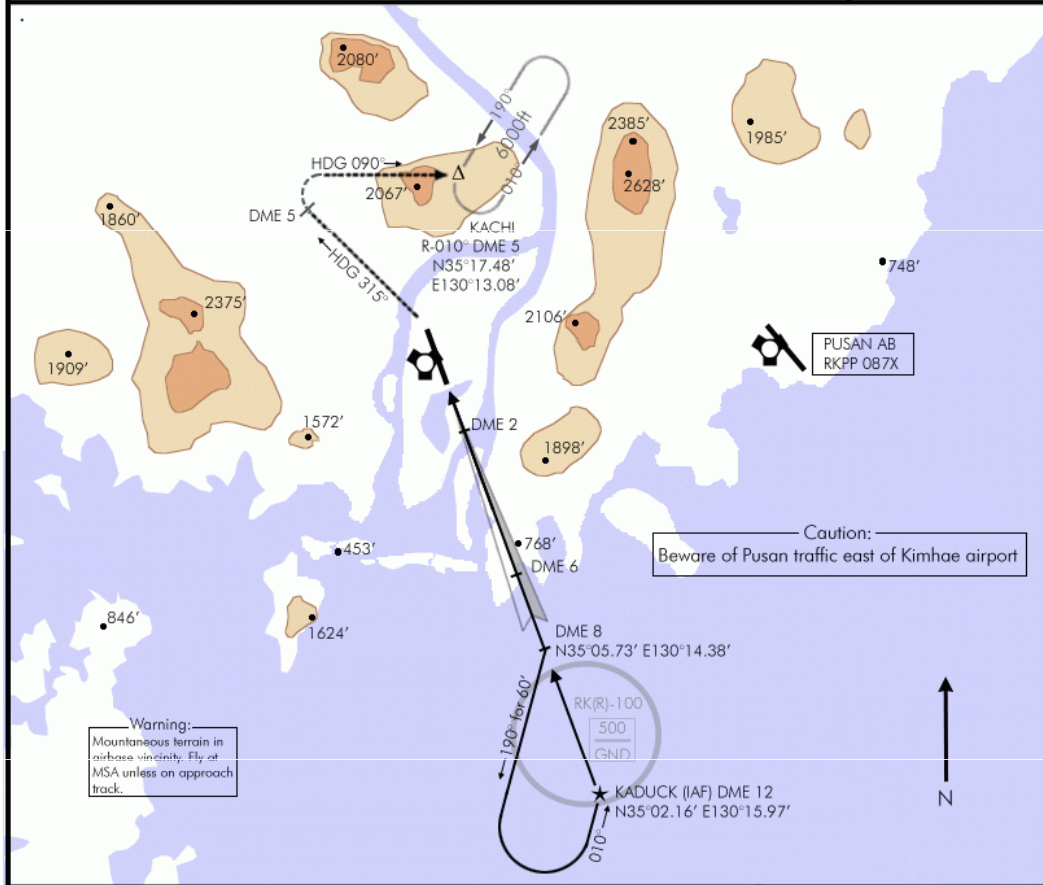
ILS RWY 34

Date: 29 Nov 2009

TACAN:	TWR:	ILS:	ILS DA(H):	LOC:	GPS:	ELEV:
117X	233.3/118.1	109.5	239' (200' AGL)	340°	N35°13,29' E130°11.66'	039'

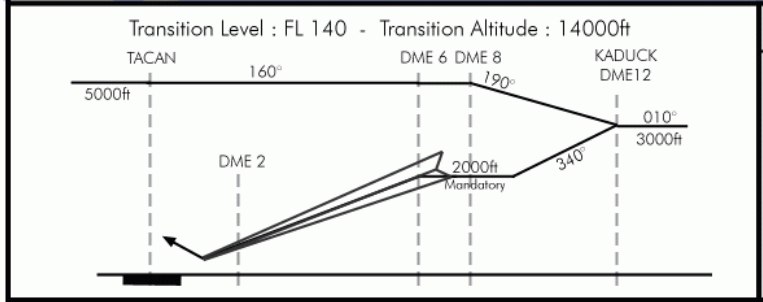


MISSED APPROACH: Climb on runway heading to 500', then climbing LEFT turn to 4000ft heading 315° until 5 DME Kimhae tacan. Then climbing RIGHT turn to 6000ft heading 090° and hold at KACHI.



Warning:
Mountaneous terrain in
airbase vicinity. Fly at
MSA unless on approach
track.

Caution:
Beware of Pusan traffic east of Kimhae airport



MINIMA:

ILS: 239'(200'AGL)*
Vis: 200-800m

LOC: 419'(380' AGL)**
Vis: 300-1600m

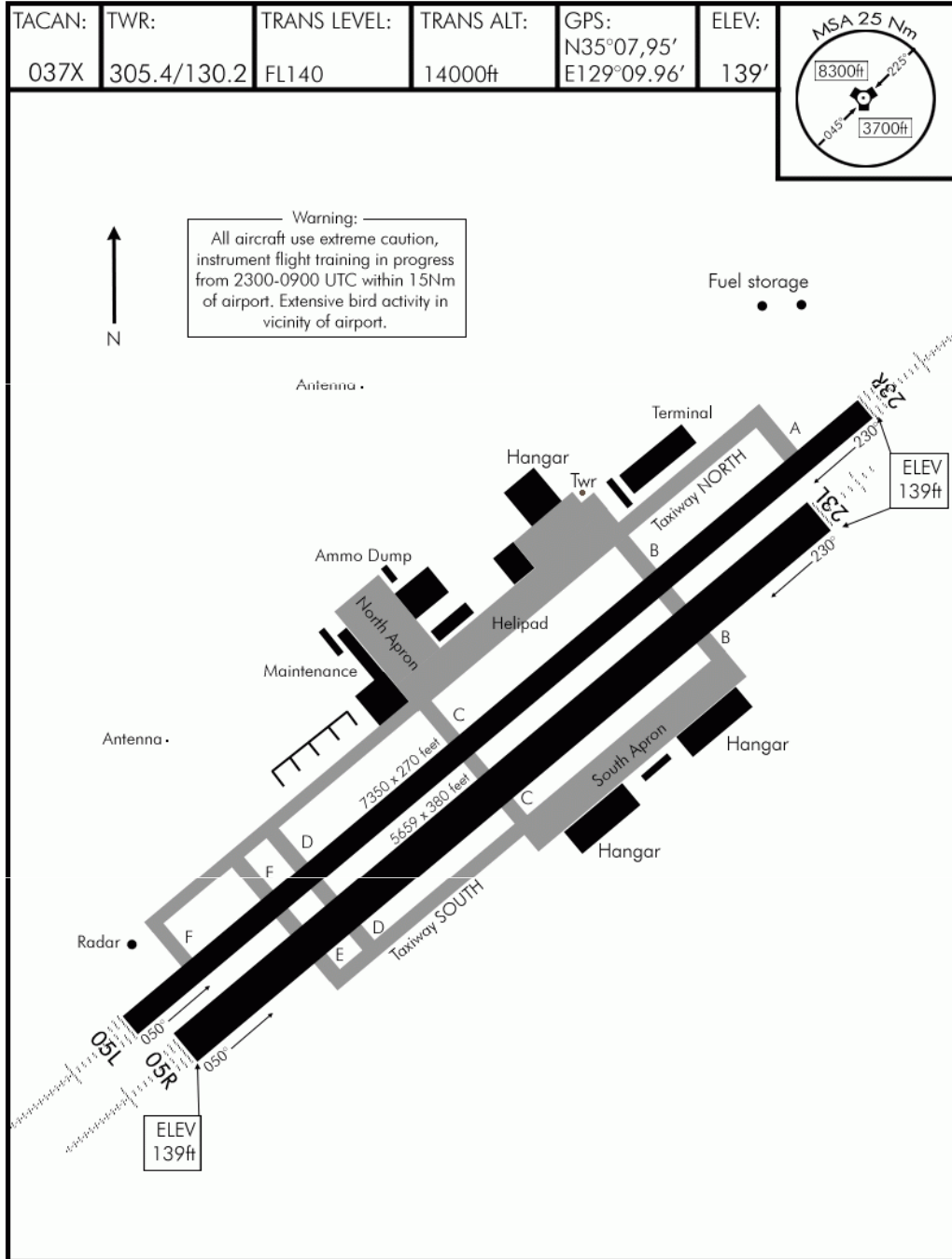
Circling: 789'(750'AGL)
Vis: 600-2000m

*When ALS inop, increase vis to 1200m
**When ALS inop, increase vis to 2000m

AIRPORT DIAGRAM

Date: 23 Dec 2009

SACHON (RKPS)
SOUTH KOREA



AIRPORT DIAGRAM

© COMBATSIM CHECKLISTS 2010

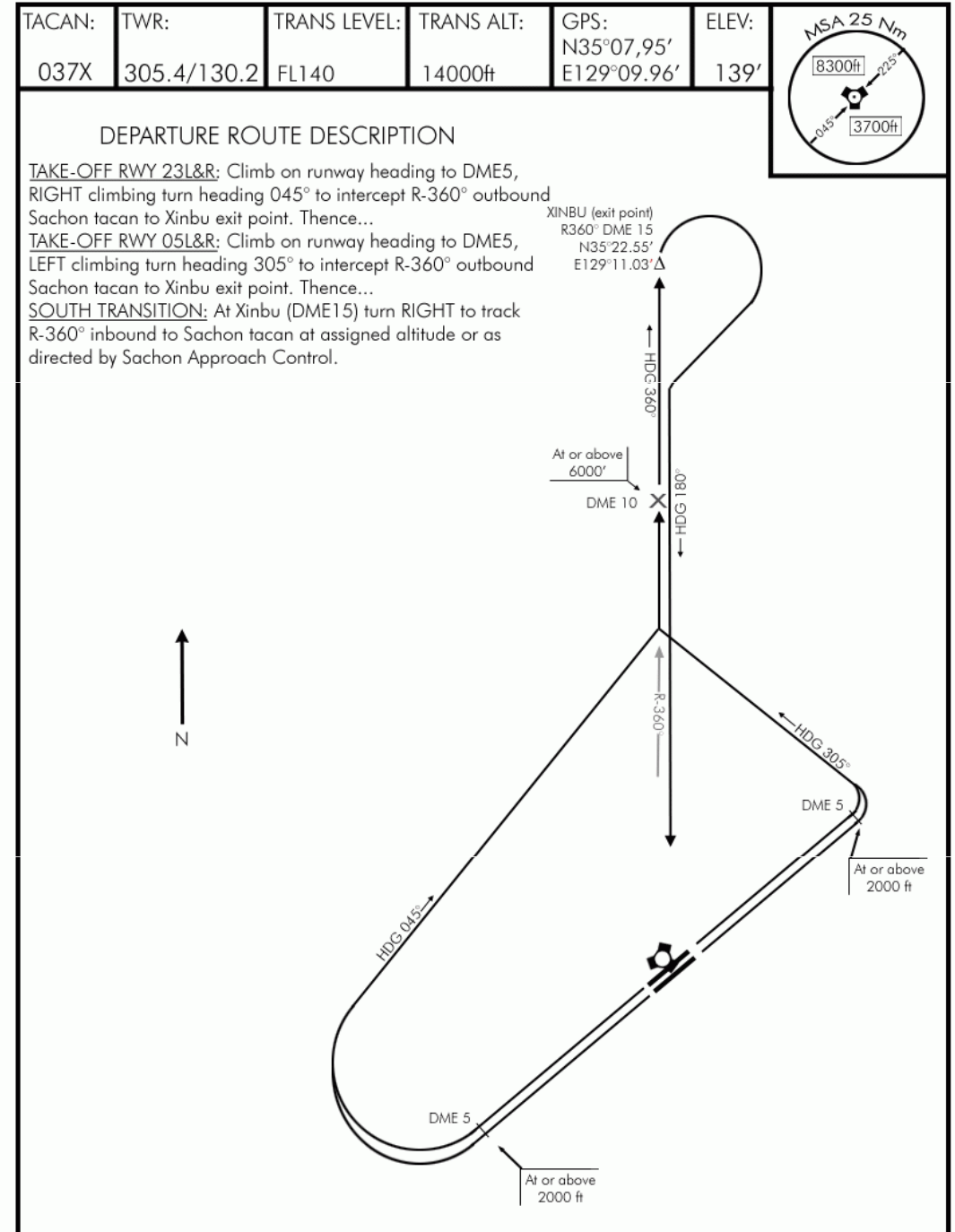
SACHON (RKPS)
SOUTH KOREA

NOT FOR REAL NAVIGATION - FALCON 4 BMS ONLY

SACHON ONE DEPARTURE

Date: 23 Dec 2009

SACHON (RKPS)
SOUTH KOREA



SACHON ONE DEPARTURE

© COMBATSIM CHECKLISTS 2010

SACHON (RKPS)
SOUTH KOREA

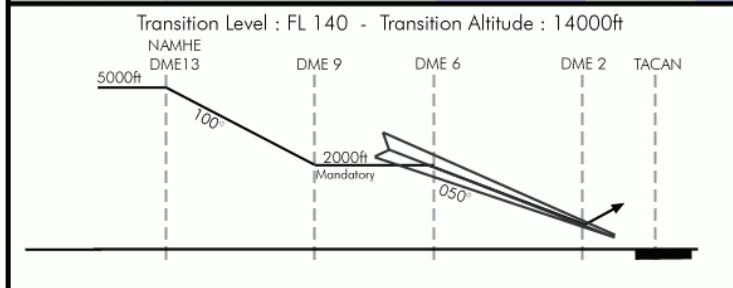
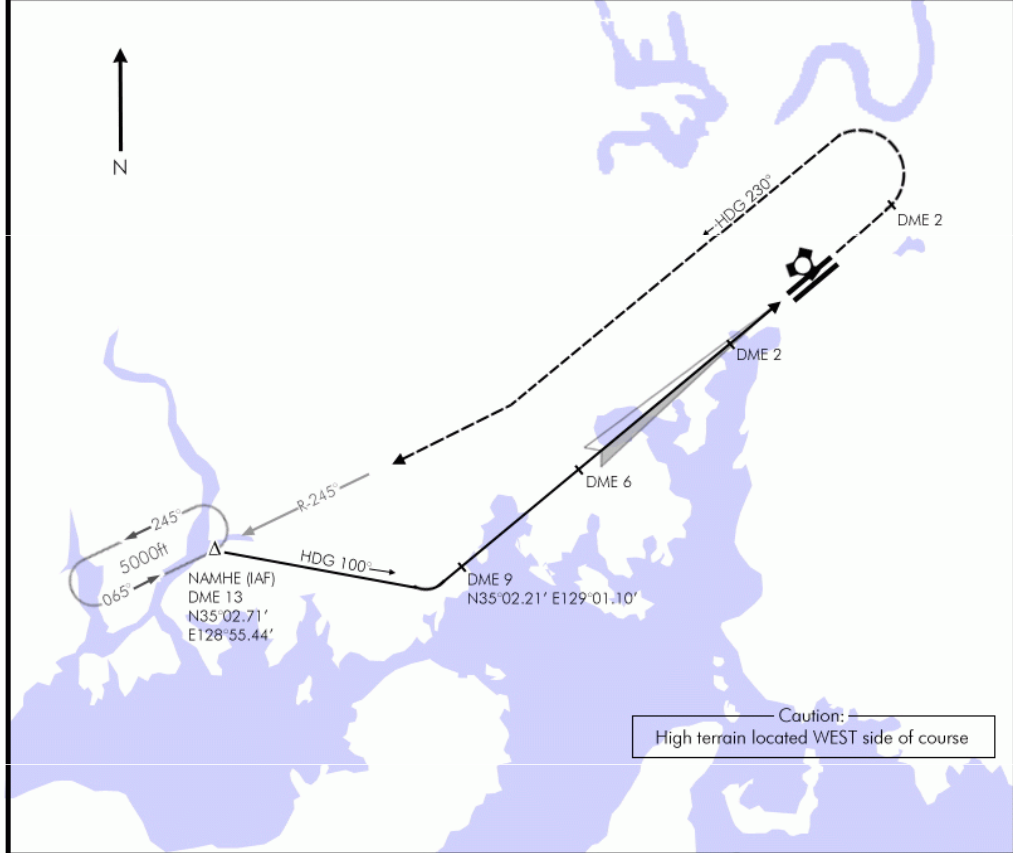
NOT FOR REAL NAVIGATION - FALCON 4 BMS ONLY

ILS RWY 05L

Date: 23 Dec 2009

SACHON (RKPS)
SOUTH KOREA

TACAN:	TWR:	ILS:	ILS DA(H):	LOC:	GPS:	ELEV:	
037X	305.4/130.2	111.5	339' (200' AGL)	050°	N35°07.95' E129°09.96'	139'	
MISSED APPROACH: Climb on runway heading to DME 2, then climbing LEFT turn to 5000ft heading 230° until intercepting R-245° Outbound Sachon tacan. Hold as published at NAMHE							ALSF-1



MINIMA:

ILS: 339'(200'AGL)*
Vis: 200-800m

LOC: 539'(400' AGL)**
Vis: 300-1600m

Circling: 939'(800'AGL)
Vis: 600-2000m

*When ALS inop, increase vis to 1200m
**When ALS inop, increase vis to 2000m

ILS RWY 05L

NOT FOR REAL NAVIGATION - FALCON 4 BMS ONLY

© COMBATSIM CHECKLISTS 2010

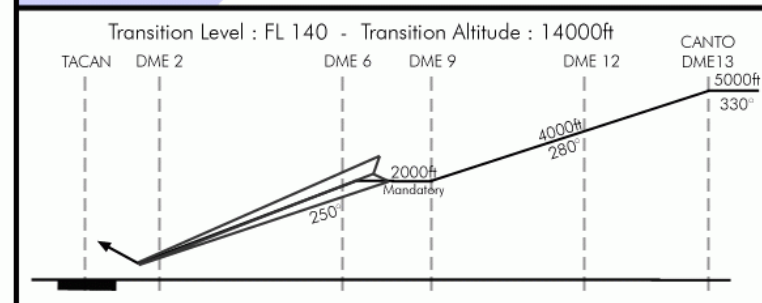
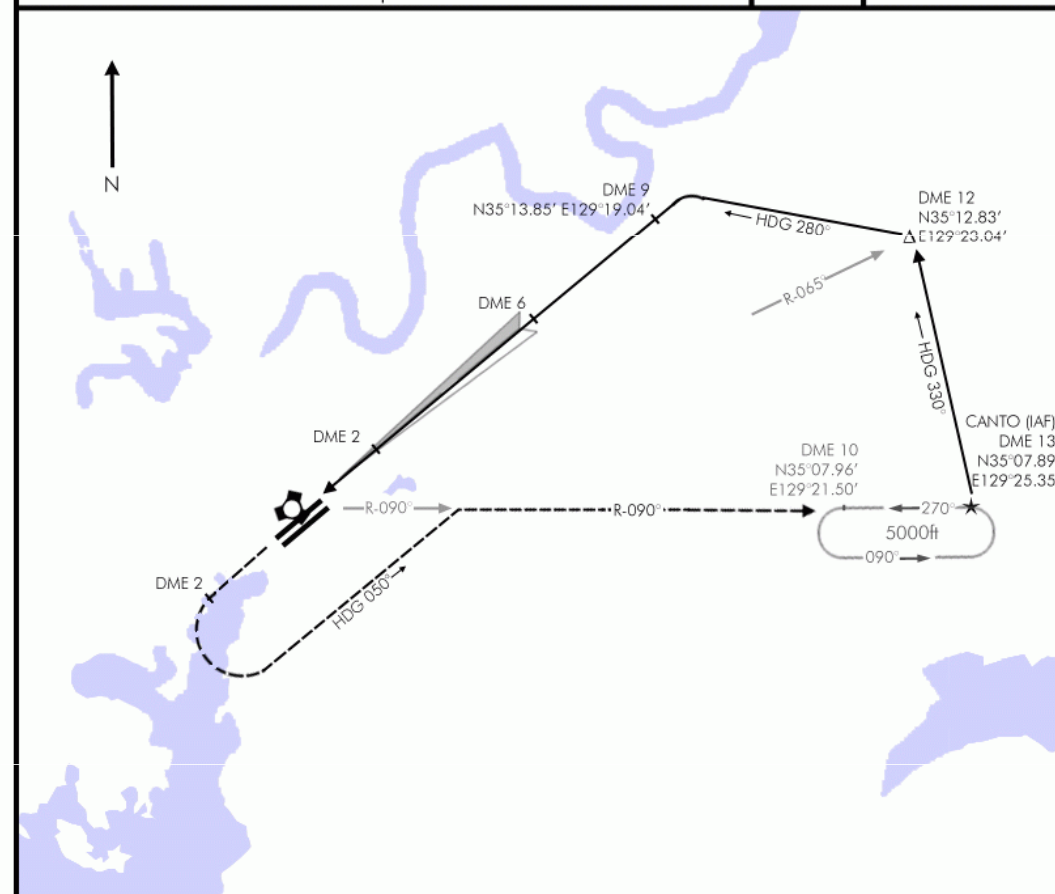
SACHON (RKPS)
SOUTH KOREA

ILS RWY 23R

Date: 23 Dec 2009

SACHON (RKPS)
SOUTH KOREA

TACAN:	TWR:	ILS:	ILS DA(H):	LOC:	GPS:	ELEV:	
037X	305.4/130.2	108.1	339' (200' AGL)	230°	N35°07.95' E129°09.96'	139'	
MISSED APPROACH: Climb on runway heading to DME 2, then climbing LEFT turn to 5000ft heading 050° until intercepting R-090° Outbound Sachon tacan. Hold as published at CANTO							ALSF-1



MINIMA:

ILS: 339'(200'AGL)*
Vis: 200-800m

LOC: 539'(400' AGL)**
Vis: 300-1600m

Circling: 939'(800'AGL)
Vis: 600-2000m

*When ALS inop, increase vis to 1200m
**When ALS inop, increase vis to 2000m

ILS RWY 23R

NOT FOR REAL NAVIGATION - FALCON 4 BMS ONLY

© COMBATSIM CHECKLISTS 2010

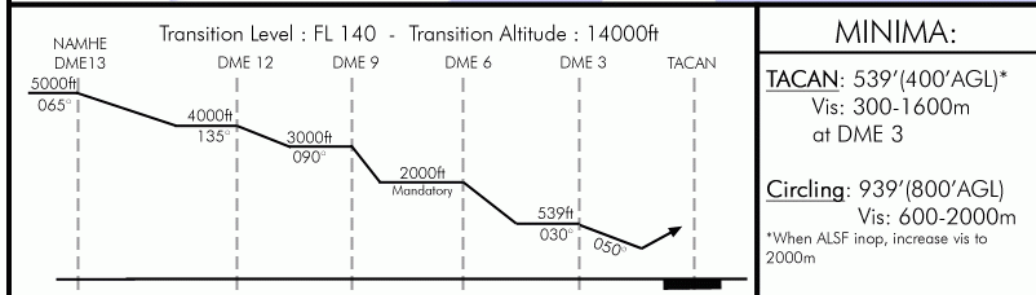
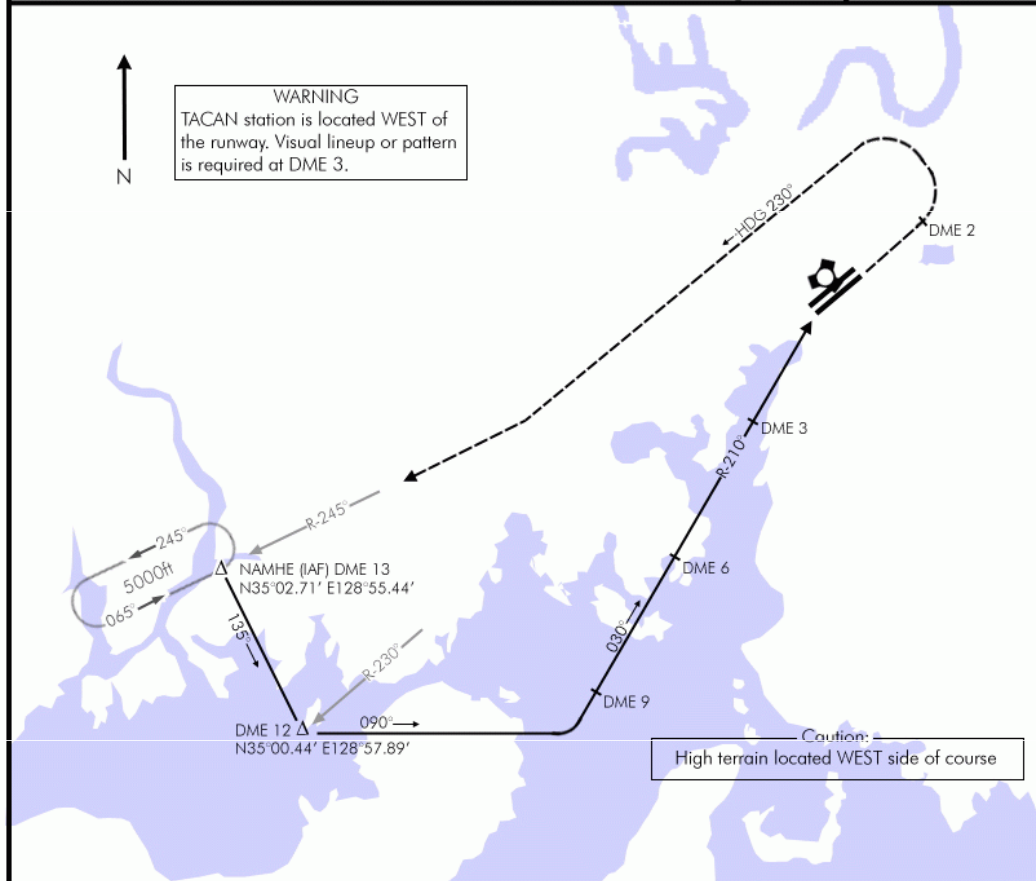
SACHON (RKPS)
SOUTH KOREA

TACAN RWY 05R

Date: 23 Dec 2009

SACHON (RKPS)
SOUTH KOREA

TACAN: 037X	TWR: 305.4/130.2	TACAN RAD: 210° (Hdg:030°)	TACAN DA(H): 539' (400' AGL)	GPS: N35°07,95' E129°09.96'	ELEV: 139'	
MISSED APPROACH: Climb on runway heading to DME 2, then climbing LEFT turn to 5000ft heading 230° until intercepting R-245° Outbound Sachon tacan. Hold as published at NAMHE					ALSF-1 PAPI	



TACAN RWY 23L

Date: 23 Dec 2009

SACHON (RKPS)
SOUTH KOREA

TACAN: 037X	TWR: 305.4/130.2	TACAN RAD: 065° (Hdg:245°)	TACAN DA(H): 539' (400' AGL)	GPS: N35°07,95' E129°09.96'	ELEV: 139'	
MISSED APPROACH: Climb on runway heading to DME 2, then climbing LEFT turn to 5000ft heading 050° until intercepting R-090° Outbound Sachon tacan. Hold as published at CANTO					MALSF PAPI	

