



AEGEAN Theater



Gedachter Verlauf zum Flightraining
„Keep Calm and Go Around“
am 28.07.2015

Navigations- und Kommunikationsübung der 1st Glory Wings VFW



Training Mission „Go Around“ 28.07.2015

„Counterclockwise“ für die Flights:
- Cowboy1
- Fury1
- Panther1



WP1: Take-off, Abflug über SITIA 1N
WP2: Exit Point
WP3: NAV (KARPHATOS)
WP4: T&G VITSENTZOS KORNAROS AB, **VHF: 122.75, Rwy. 03/21**
WP5: T&G NIKOS KAZANTZAKIS AB, **UHF: 243.20, Rwy. 08/26**
WP6: T&G IOANNIS DASKALOGIANNIS AB (Souda Tower) = „Hot-Pit“, **UHF: 257.75, Rwy. 11/29**
WP7: NAV
WP8: NAV (Insel GAVDOS, südlichster Punkt Europas)
WP9: TIMBAKION AB, **UHF: 258.80, Rwy. 08/26**

WP10: Einflugpunkt TYCHE (ASSIMI-Range)
WP11: REPON -ASSIMI-Range, ein Turn gem. Standardvorgabe
WP12: DIA, Anflugverfahren: Visual Approach Rwy. 02
WP13: KASTELI AB
WP14: Alternate, NIKOS KAZANTZAKIS AB

AA- Refueling*
Cowboy1 nach WP7
Fury1 nach WP3
Panther1 nach WP5

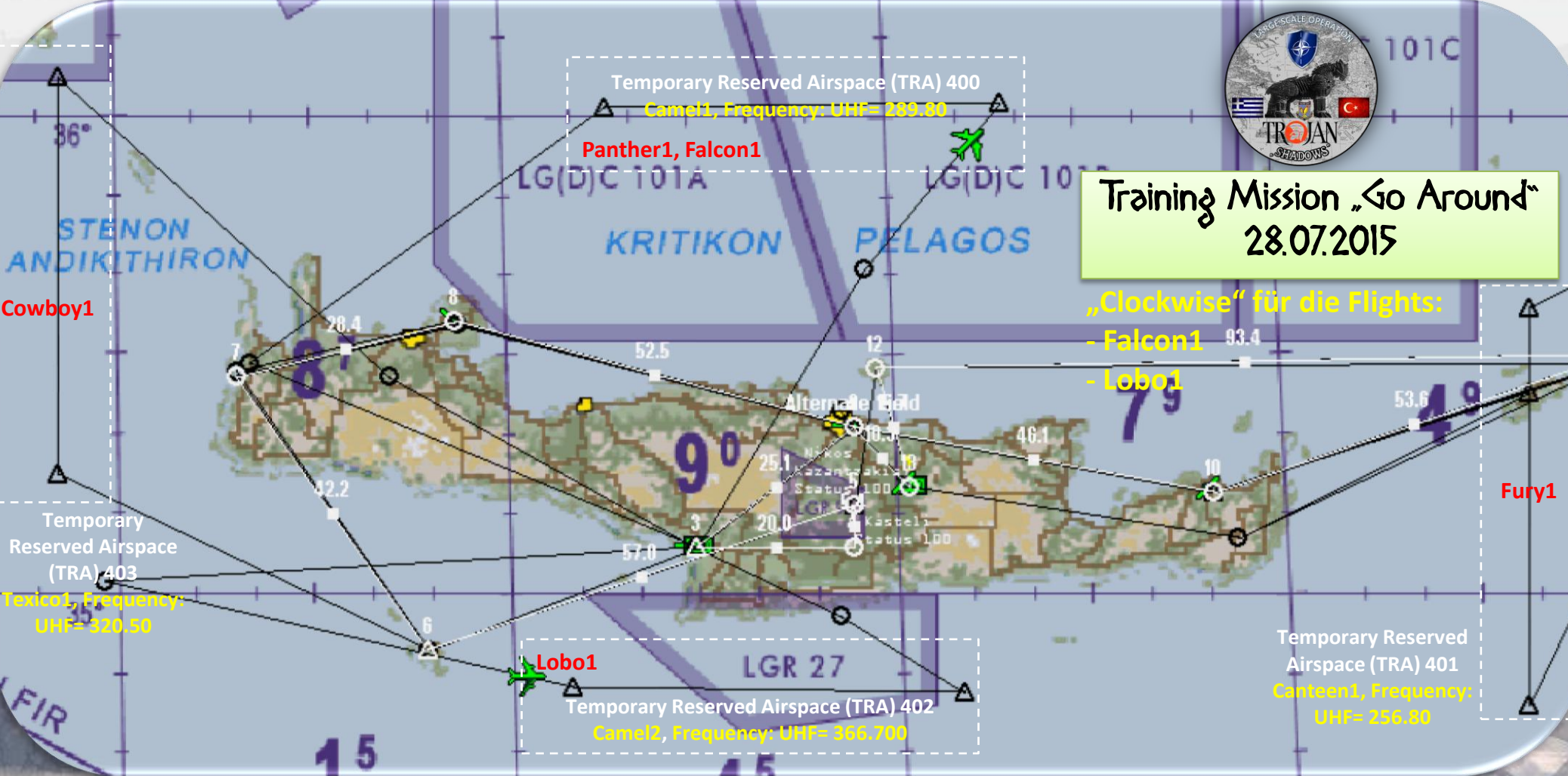
Tagflug, erste Teile um 1600Z, Package 6836, F-16C-52+,
Flugstrecke ca. 400 nm, Flugzeit ca. 1:30 Std., Wetter: Fair, Wind: 340°, 8 kts

*Der Tanker ist grundsätzlich auf seiner Frequenz anzurufen!



Training Mission „Go Around“ 28.07.2015

„Clockwise“ für die Flights:
- Falcon1 93.4
- Lobo1



- WP1: Take-off, Abflug über RKL 1P
- WP2: Exit Point
- WP3: T&G TIMBAKION AB, **UHF: 258.80, Rwy. 08/26**
- WP4: Einflugpunkt TYCHE (ASSIMI-Range)
- WP5: REPON, anschl. ASSIMI-Range, ein Turn gem. Standardvorgabe
- WP6: NAV (Insel GAVDOS, südlichster Punkt Europas)
- WP7: NAV
- WP8: T&G IOANNIS DASKALOGIANNIS AB (Souda Tower) = „Hot-Pit“, **UHF: 257.75, Rwy. 11/29**
- WP9: T&G NIKOS KAZANTZAKIS AB, **UHF: 243.20, Rwy. 08/26**

- WP10: T&G VITSENTZOS KORAROS AB, **VHF: 122.75, Rwy. 03/21**
- WP11: NAV (KARPHATOS)
- WP12: DIA, Anflugverfahren: Visual Approach Rwy. 02
- WP13: KASTELI AB
- WP14: Alternate, NIKOS KAZANTZAKIS AB

AA- Refueling*
Falcon1 nach WP11
Lobo1 nach WP5

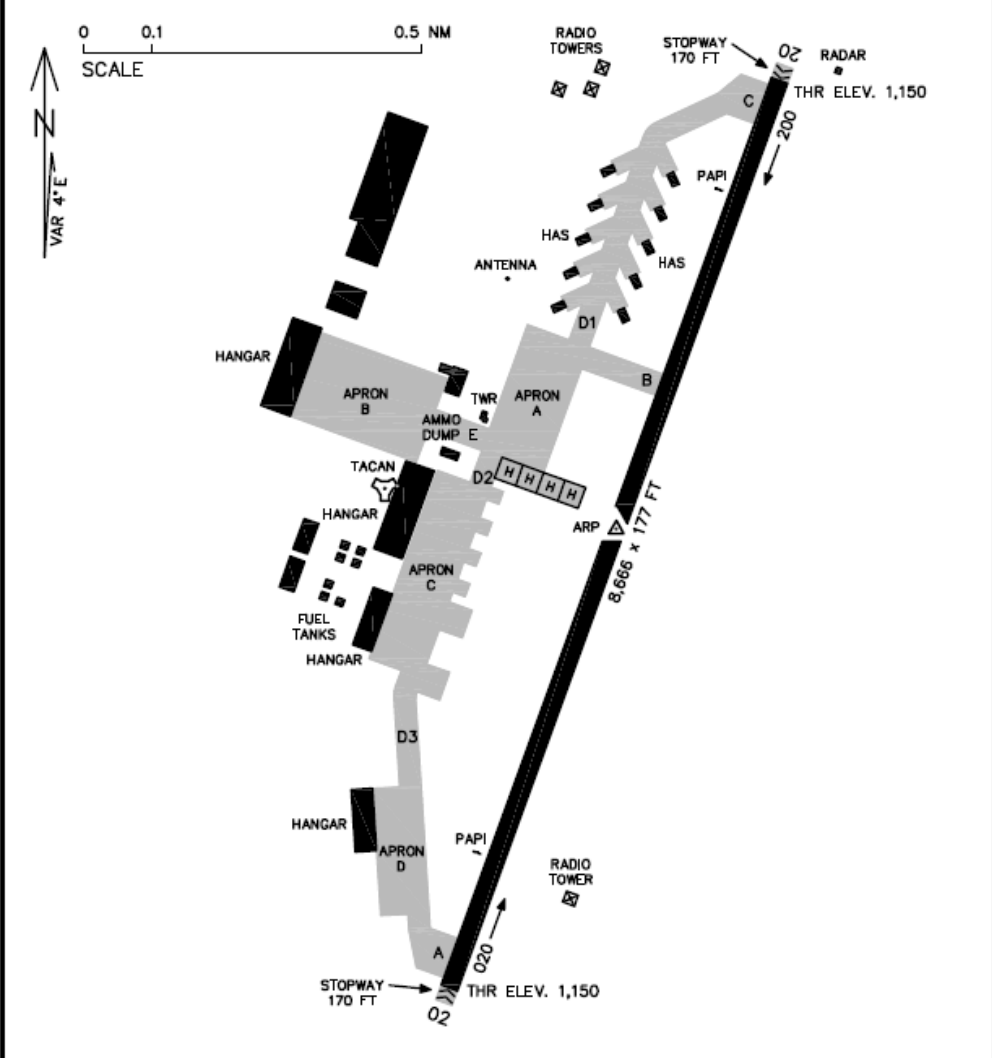
Tagflug, erste Teile um 1600Z, Package 6836, F-16C-52+,
Flugstrecke ca. 400 nm, Flugzeit ca. 1:30 Std., Wetter: Fair, Wind: 340°, 8 kts

*Der Tanker ist grundsätzlich auf seiner Frequenz anzurufen!

AIRPORT DIAGRAM

KASTELI (LGTL)
KASTELI, GREECE

TACAN KLI Chan 056X	Kasteli Tower 362.40 120.35	ARP GPS N35° 12.047' E25° 00.813'	RWY TDZE 1,150
------------------------	--------------------------------	--------------------------------------	----------------



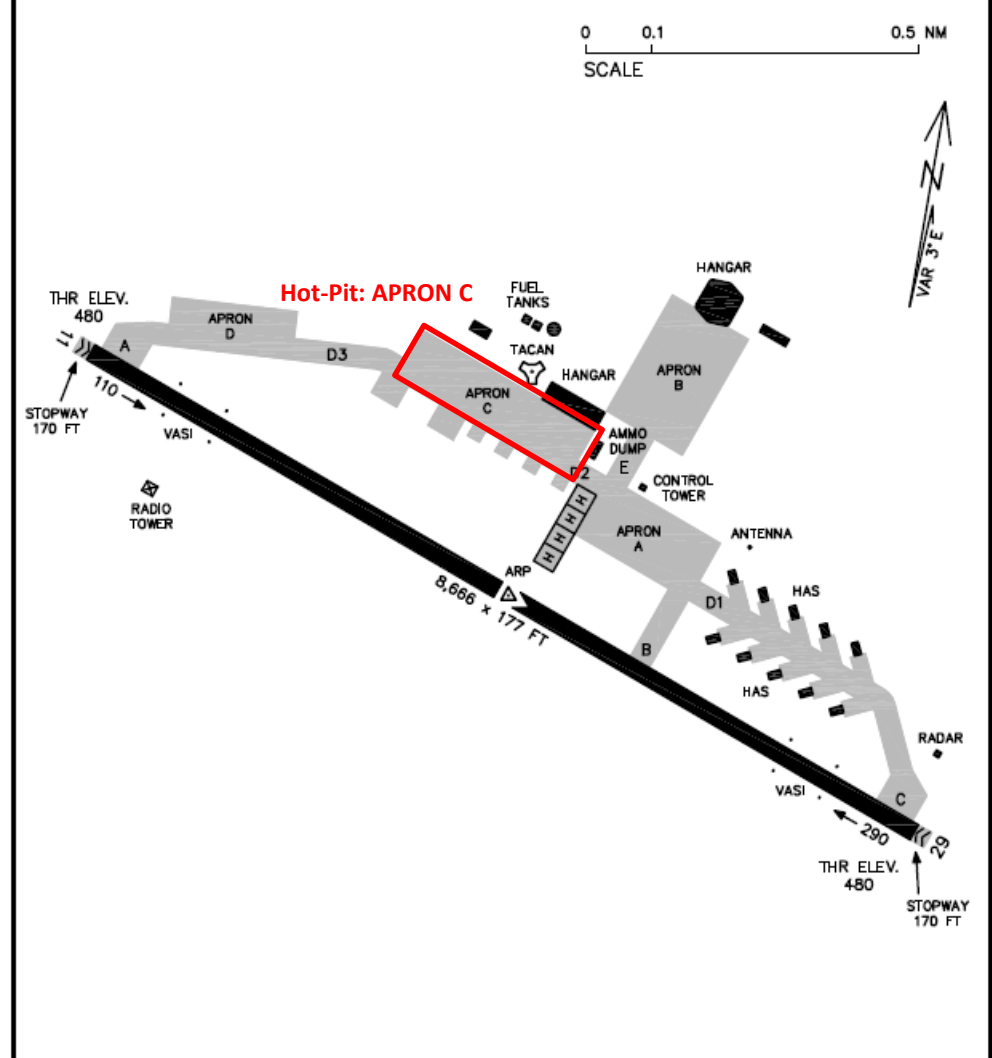
ADDITIONAL RUNWAY INFORMATION

RWY	TORA (FT)	LDA (FT)	ALS	VISUAL AID
02	8,666	8,666	(A1*) ALSF-1	PAPI - Left
20	8,666	8,666	(A1*) ALSF-1	PAPI - Right

AIRPORT DIAGRAM

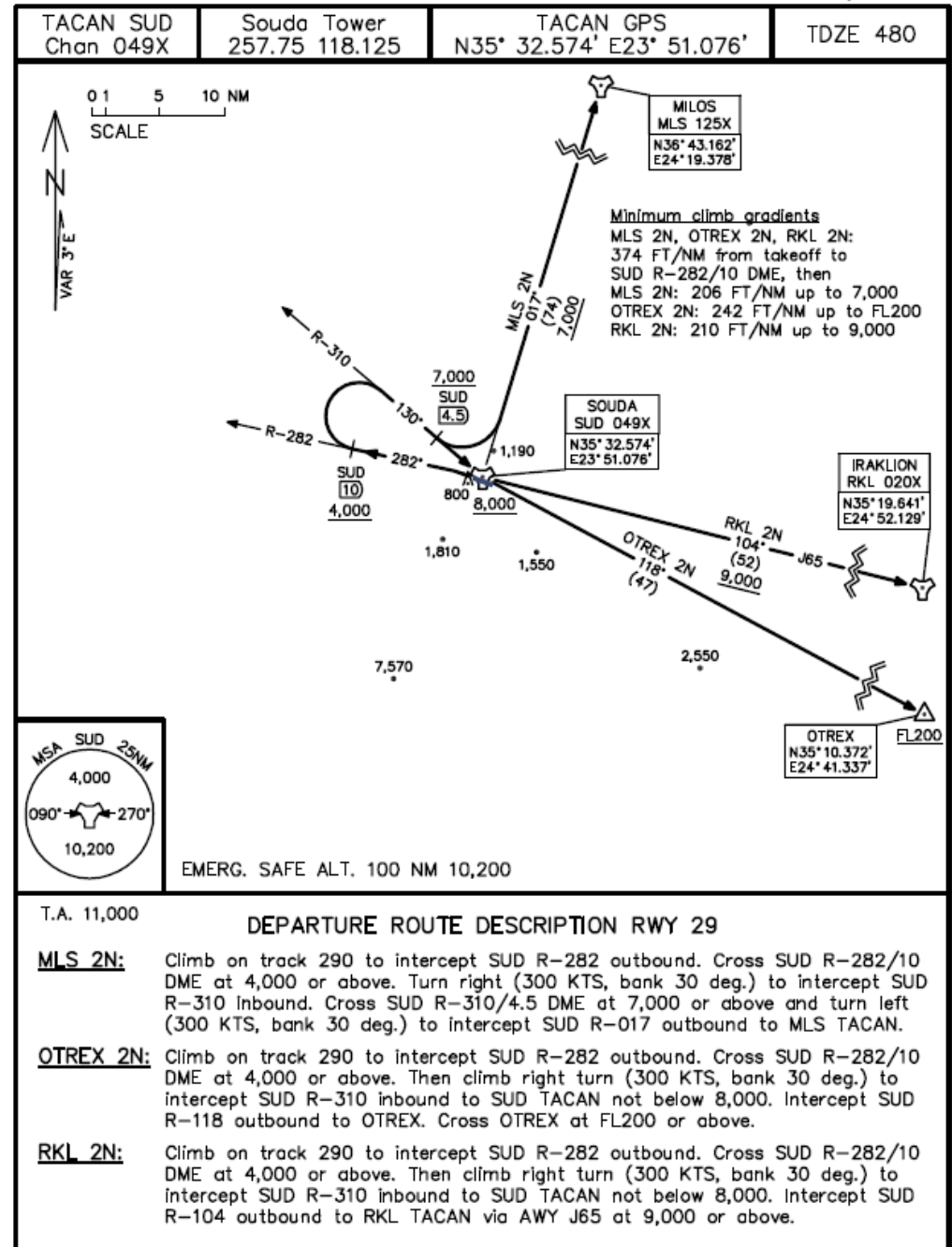
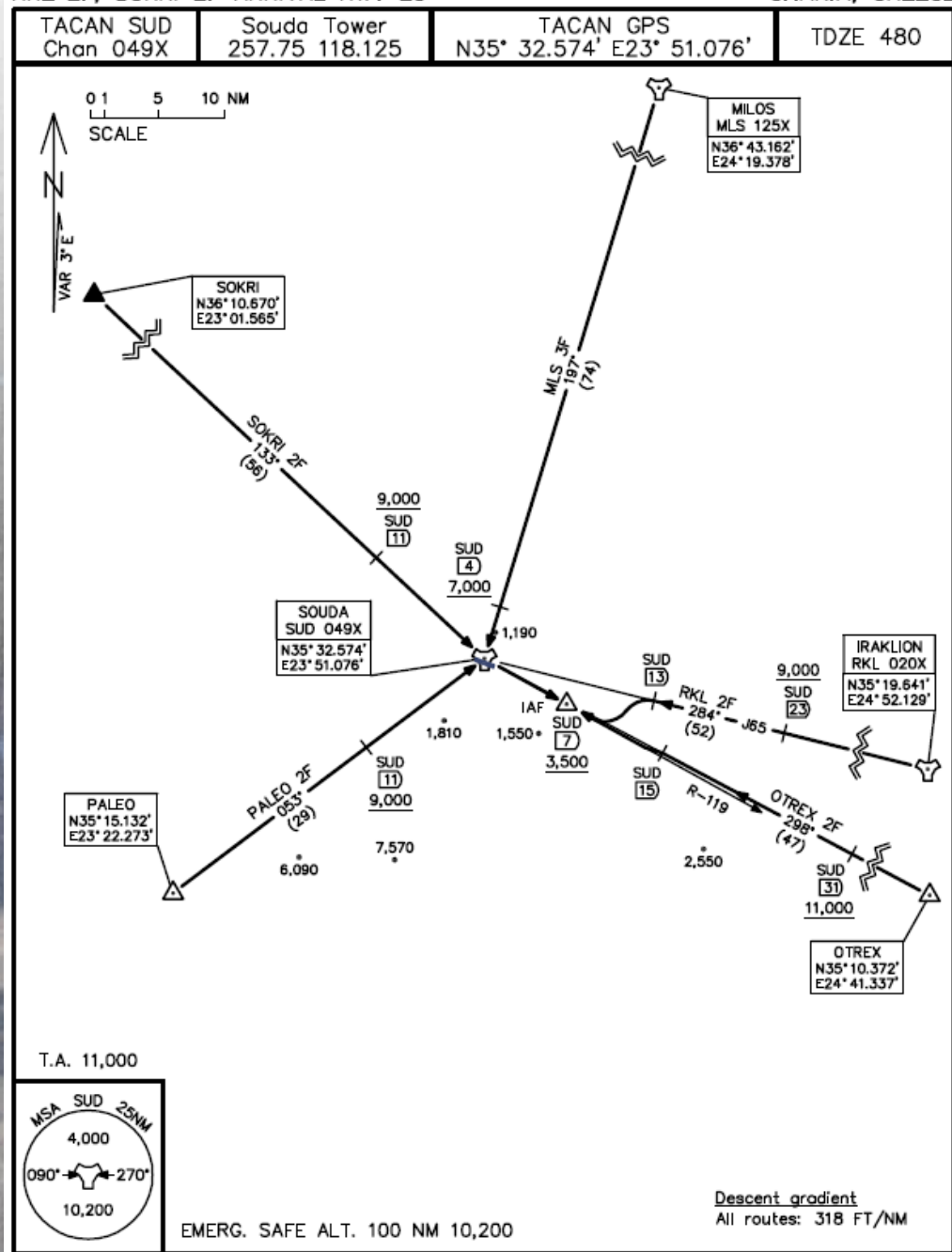
IOANNIS DASKALOGIANNIS (LGSA)
CHANIA, GREECE

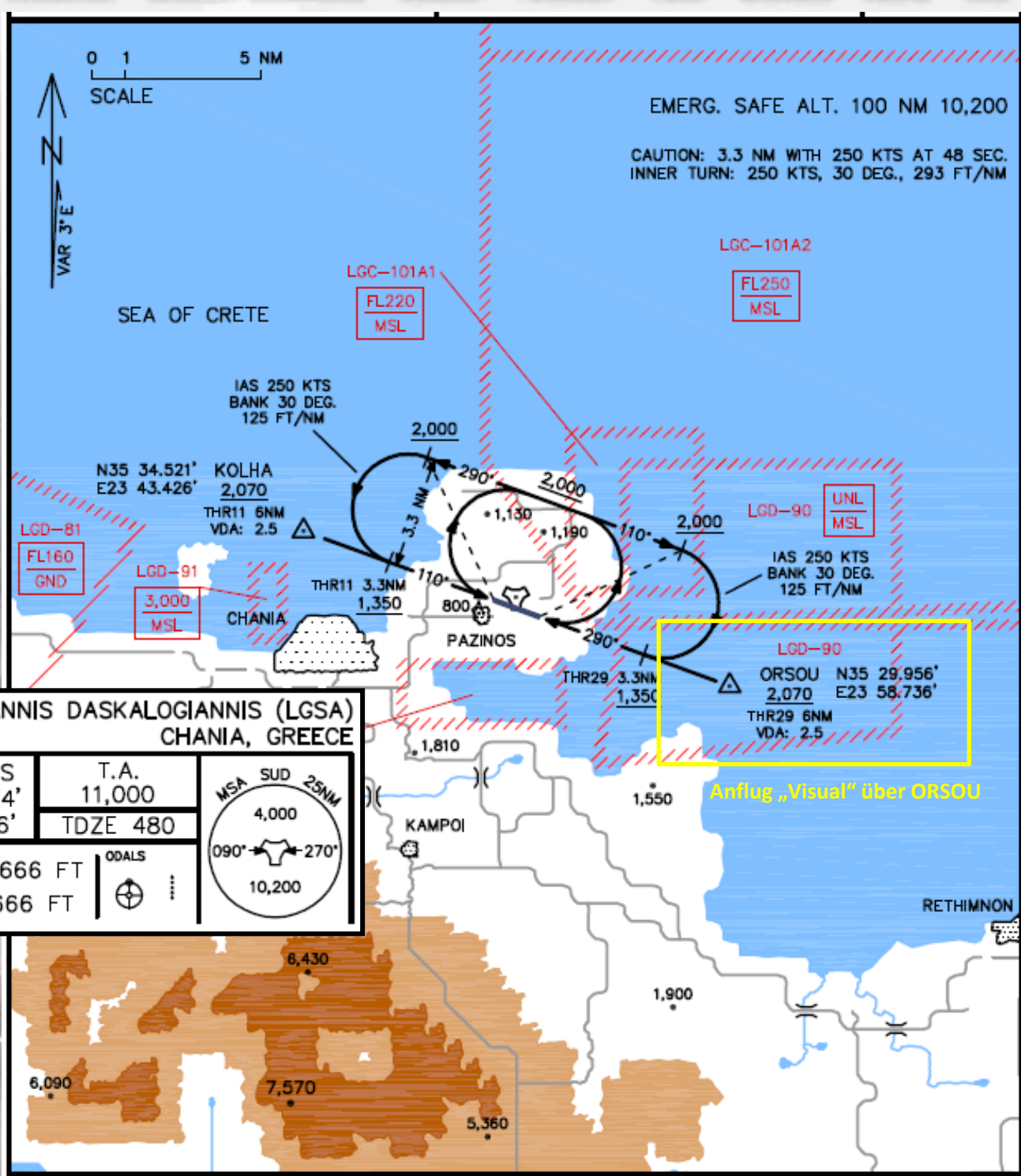
TACAN SUD Chan 049X	Souda Tower 257.75 118.125	ARP GPS N35° 32.239' E23° 51.098'	RWY TDZE 480
------------------------	-------------------------------	--------------------------------------	--------------



ADDITIONAL RUNWAY INFORMATION

RWY	TORA (FT)	LDA (FT)	ALS	VISUAL AID
11	8,666	8,666	(*) ODALS	VASI - L/R
29	8,666	8,666	(*) ODALS	VASI - L/R

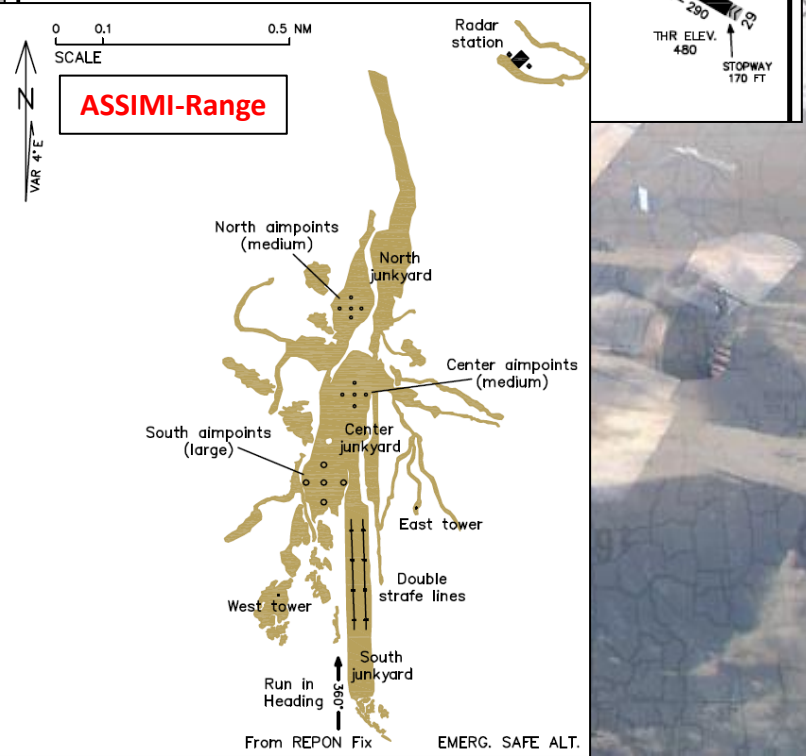
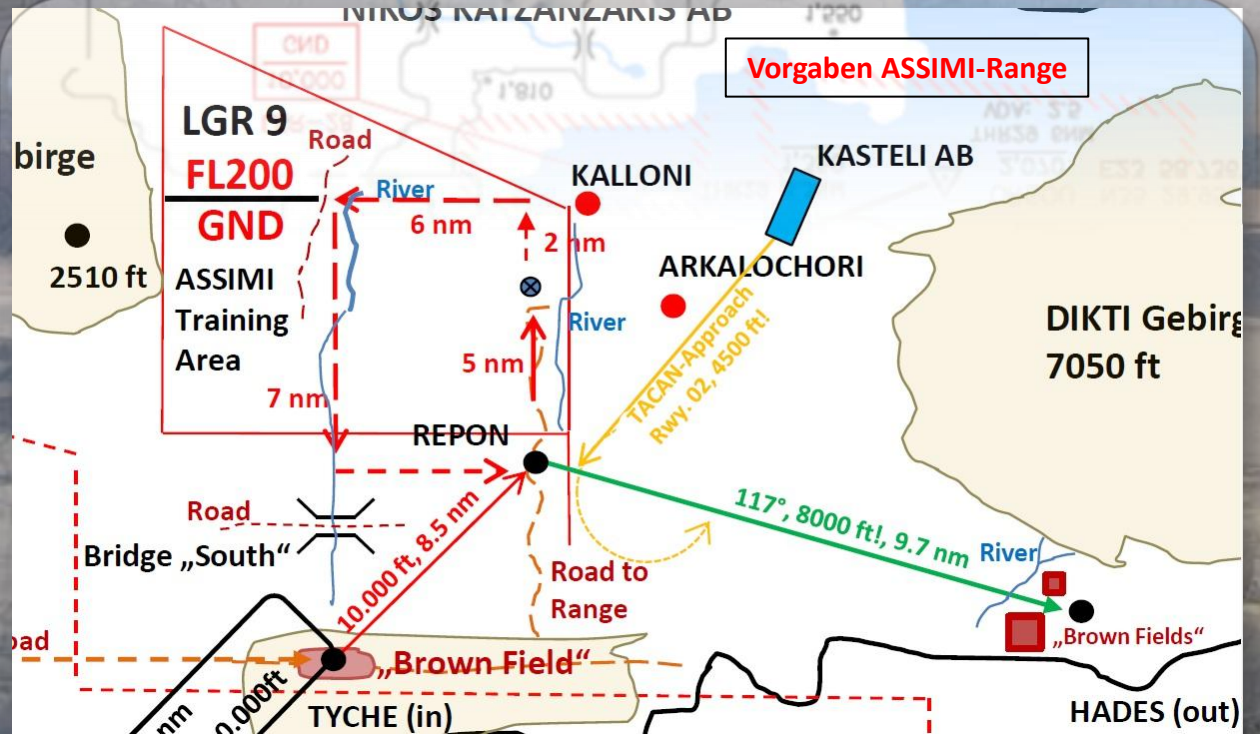
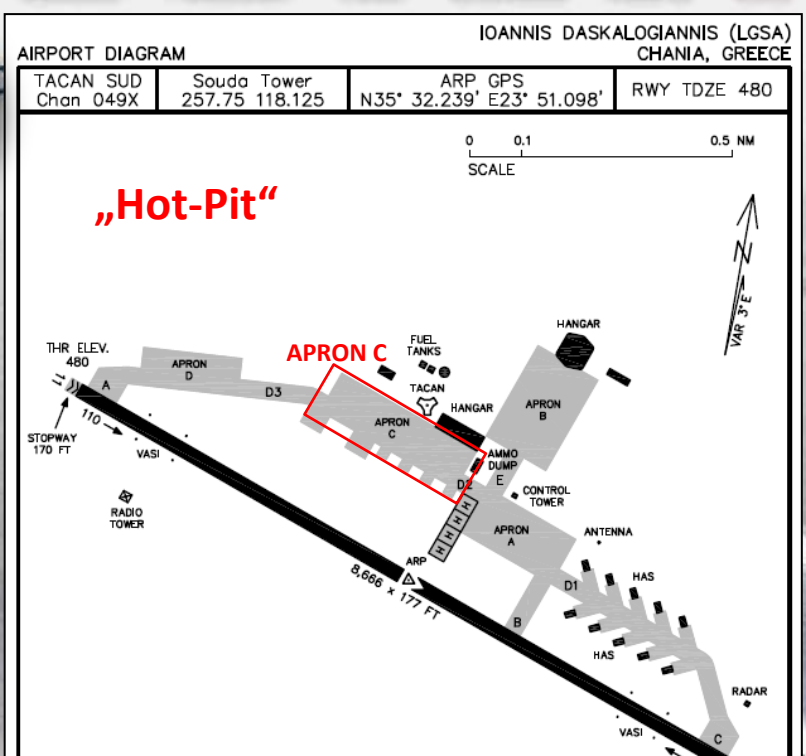
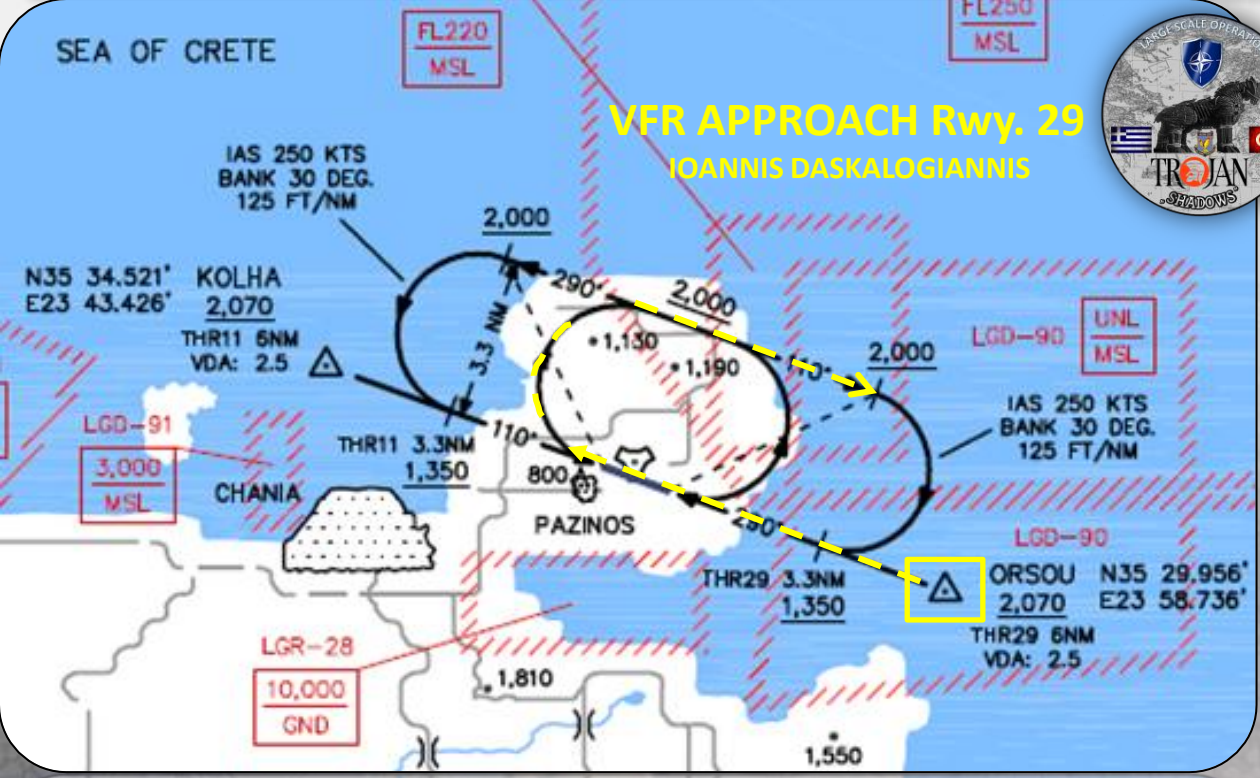




VFR APPROACH CHART
IOANNIS DASKALOGIANNIS (LGSA)
CHANIA, GREECE

TACAN SUD Chan 049X	LOC -	Souda Tower 257.75 118.125	TACAN GPS N35° 32.574' E23° 51.076'	T.A. 11,000 TDZE 480	MSA SUD 25NM 4,000 090°-270° 10,200
RWY 11	TORA: 8,666 FT LDA: 8,666 FT	ODALS ⊕	RWY 29	TORA: 8,666 FT LDA: 8,666 FT	







TIMBAKION AB (Alternate)



AIRPORT	TACAN CHAN.	TACAN RANGE (N.M.)	ILS LOC FREQUENCY (RUNWAY)	TOWER FREQ. UHF / VHF	RUNWAY	RUNWAY ELEV. (FT - MSL)	NAVAID (AIRPORTS) OR MIDDLE OF RWY (AIRSTRIPS) COORDINATES (LAT - LNG)
TIMBAKION	035 X	40	—————	258.80 122.25	08 / 26	0	N 35° 04.553' E 24° 27.152'

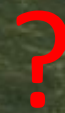


UNCLASSIFIED X

RECON

25x 09.893' 24x 52.027'
ELEV 1800 ft. MSL

ASSIMI-Range



„Search and Mark“

205th Motor Rifle Btl



Slant Range: 9320 ft Bullseye: 213 205 nm

