

Ergänzende Nav-Vorgaben
„REPLENISHMENT DELIVERY“

hier:

- SID ATATURK**
- SID ADNAN MENDERES**



AEGEAN Theater



TRANSITION ALTITUDES LIST (FT MSL) FOR AEGEAN THEATER v1.5 - FALCON BMS 4.32

ATATURK	10,000
---------	--------

40° 59.192'
E 28° 57.352'
Elev 163 ft. MSL

ATATURK	072 X	120	111.10 (16R) 111.50 (34L) 111.30 (34R)	256.20	125.90	16 / 34 L / R	150	N 40° 59.114' E 28° 57.352'
---------	-------	-----	---	--------	--------	---------------	-----	-----------------------------

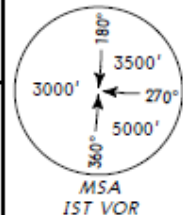


Rwy. 16 / 34 L/R



Apt Elev
163'

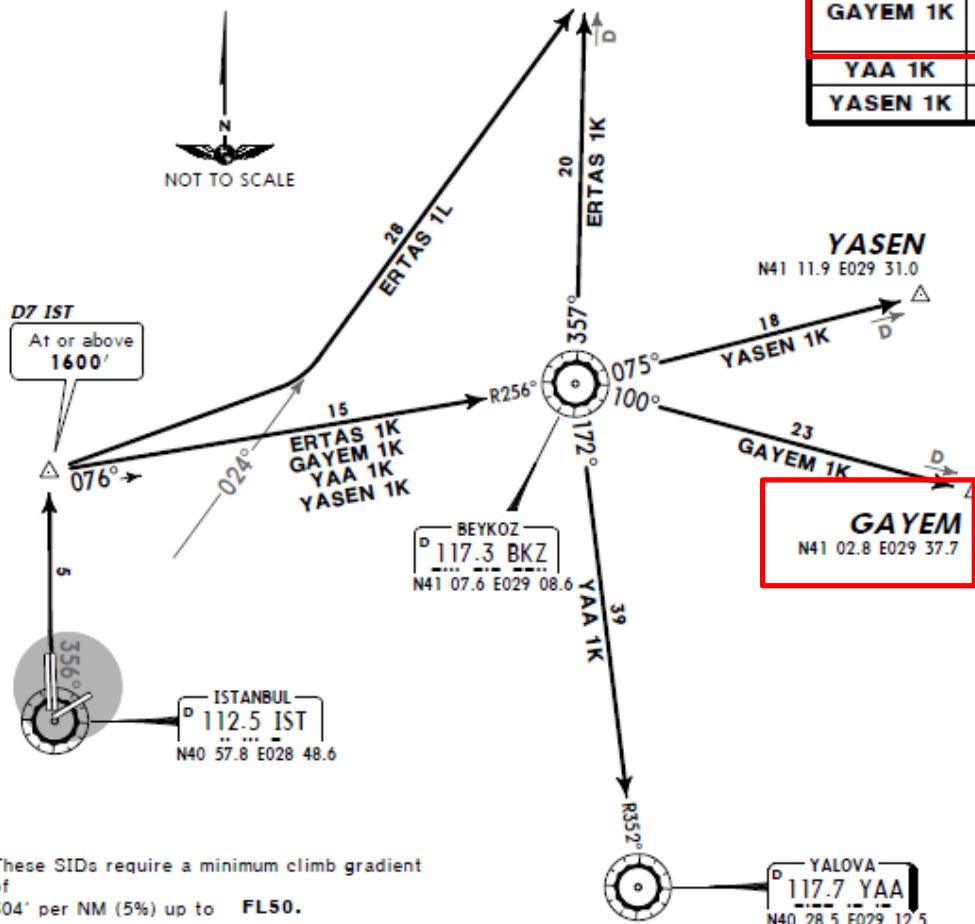
Trans level: By ATC Trans alt: 4000'
Pilots shall apply Noise Abatement Departure Procedure 1 (NADP 1) according to ICAO Annex 16, Doc 8168, Vol 1 until passing 3000'.



ERTAS ONE KILO (ERTAS 1K) [ERTA1K]
ERTAS ONE LIMA (ERTAS 1L) [ERTA1L]
GAYEM ONE KILO (GAYEM 1K) [GAYE1K]
YALOVA ONE KILO (YAA 1K)
YASEN ONE KILO (YASEN 1K) [YASE1K]

RW 34R DEPARTURES
TO NORTH, EAST & SOUTHEAST

ERTAS
N41 27.7 E029 08.8



INITIAL CLIMB

Intercept IST R-356 to D7 IST.	
SID	ROUTING
ERTAS 1K	At D7 IST turn RIGHT, intercept BKZ R-256 inbound to BKZ, BKZ R-357 to ERTAS.
ERTAS 1L	At D7 IST turn RIGHT, intercept IST R-024 to ERTAS.
GAYEM 1K	At D7 IST turn RIGHT, intercept BKZ R-256 inbound to BKZ, BKZ R-100 to GAYEM.
YAA 1K	At D7 IST turn RIGHT, intercept BKZ R-256 inbound to BKZ, BKZ R-172 to YAA.
YASEN 1K	At D7 IST turn RIGHT, intercept BKZ R-256 inbound to BKZ, BKZ R-075 to YASEN.

These SIDs require a minimum climb gradient of 304' per NM (5%) up to FL50.

Gnd speed-KT	75	100	150	200	250	300
304' per NM	380	506	760	1013	1266	1519



Abflugvorgabe GAYEM



TRANSITION ALTITUDES LIST (FT MSL) FOR AEGEAN THEATER v1.5 - FALCON BMS 4.32

ADNAN MENDERES	10,000
----------------	--------

38° 18.077'
ELEV 430 ft. MSL

27° 04.379'

Reporting Point: 50 nm North
Approach-Control by Human-ATC

ADNAN MENDERES	098 X	200	108.50 (16R)	110.30 (34L)	376.60	118.10	16 / 34 L / R	410	N 38° 17.999' E 27° 04.296'
----------------	-------	-----	--------------	--------------	--------	--------	---------------	-----	-----------------------------

ADNAN MENDERES
-Zwischenstopp-

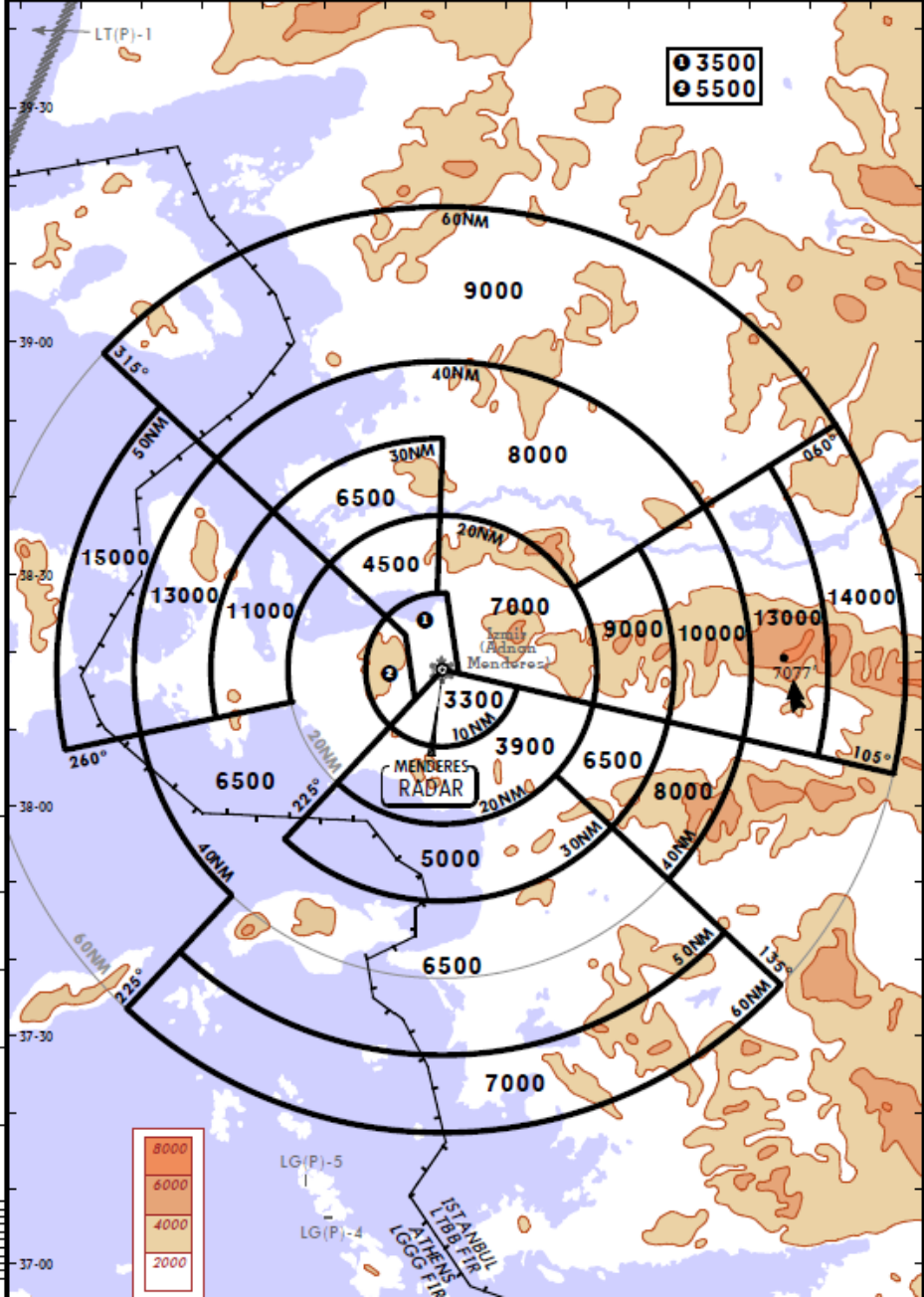


Abstellbereich 1st GW

Rwy. 16 / 34 L/R



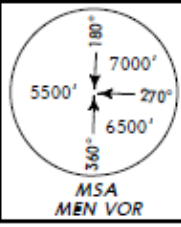
MENDERES Approach/Radar					Apt Elev 410'	Alt Set: hPa Trans level: By ATC Trans alt: 10000'
118.55	119.45	119.5	119.57	119.77		
120.07	120.1	120.17	121.5	125.62		
127.52	128.32	128.62	128.92			
132.22	132.62	134.2	136.4			



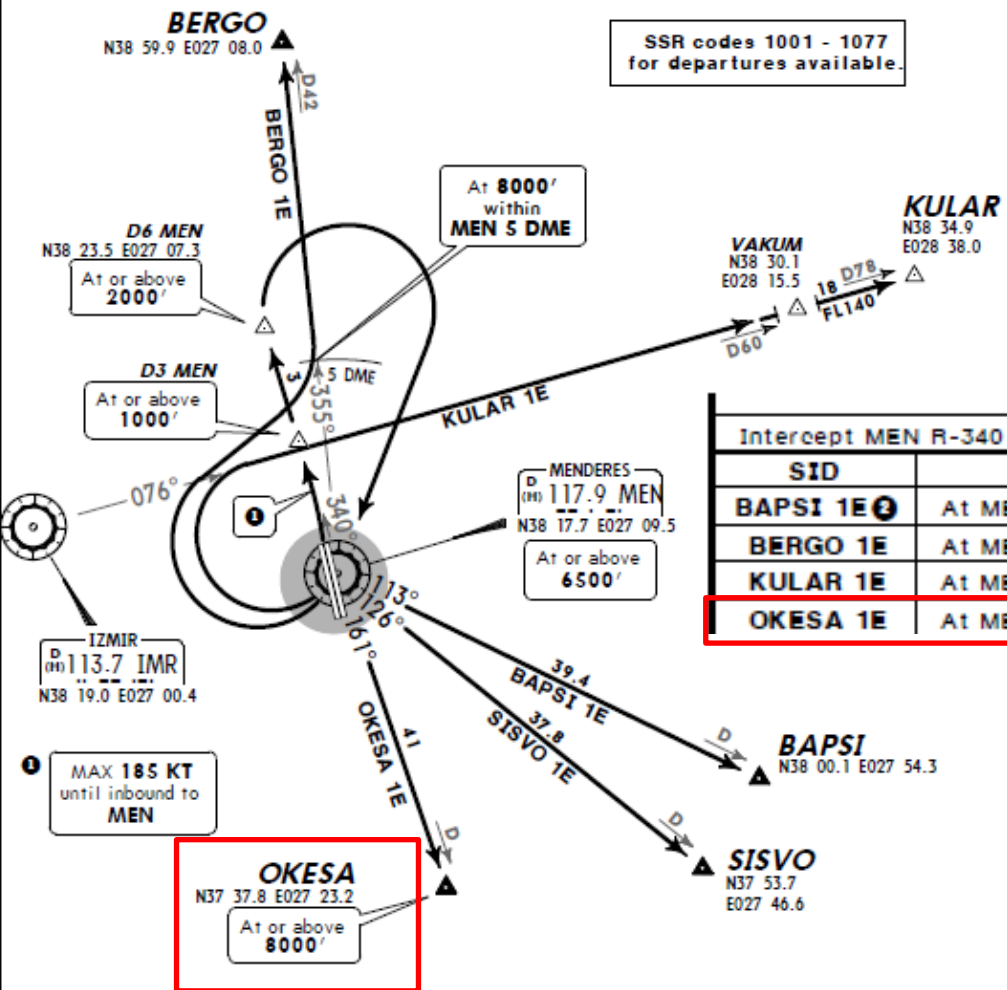


Apt Elev 410' Trans level: By ATC Trans alt: 10000'

BAPSI ONE ECHO (BAPSI 1E) [BAPSI E]
BERGO ONE ECHO (BERGO 1E) [BERGIE]
KULAR ONE ECHO (KULAR 1E) [KULAI E]
OKESA ONE ECHO (OKESA 1E) [OKESIE]
SISVO ONE ECHO (SISVO 1E) [SISVIE]
RWYS 34L/R DEPARTURES
TO NORTH, EAST & SOUTH



SSR codes 1001 - 1077
for departures available.



Abflugvorgabe OKESA 1E

INITIAL CLIMB	
SID	ROUTING
Intercept MEN R-340 to D0 MEN, turn RIGHT to MEN.	
BAPSI 1E	At MEN, turn LEFT, intercept MEN R-113 to BAPSI, then join airway.
BERGO 1E	At MEN, intercept MEN R-355 within MEN 5 DME to BERGO, then join airway.
KULAR 1E	At MEN, turn RIGHT, intercept IMR R-076 to KULAR, then join airway.
OKESA 1E	At MEN, MEN R-161 to OKESA, then join airway.

