

AEGEAN Theater 1.6



„Trojan Shadows - Fly Out“
- January - 12 - 2018 -



Flugunterlagen Teil II

- Roster
- Navigation
- Wetter



ROSTER (PACKAGE 6844, ESCORT-Mission)

[Stand: 101800Ajan16](#)

- | | |
|---------------------------|--|
| Argos1: KASTELI | - Corran, Stingray, Keule, Ghost rider |
| Bulldog1: KASTELI | - Paladin, Caesar, Imbley, Para |
| Crimson1: KASTELI | - Dro16, Slick, Hunter, RatCat |
| Dipper1: IRAKLION | - Fatality, Reaper, Opasi, Sledge |
| Eyeball1: IRAKLION | - Bluebird, Sparrow, Cupra, TheWitch |
| Human-ATC: | - Ziri |

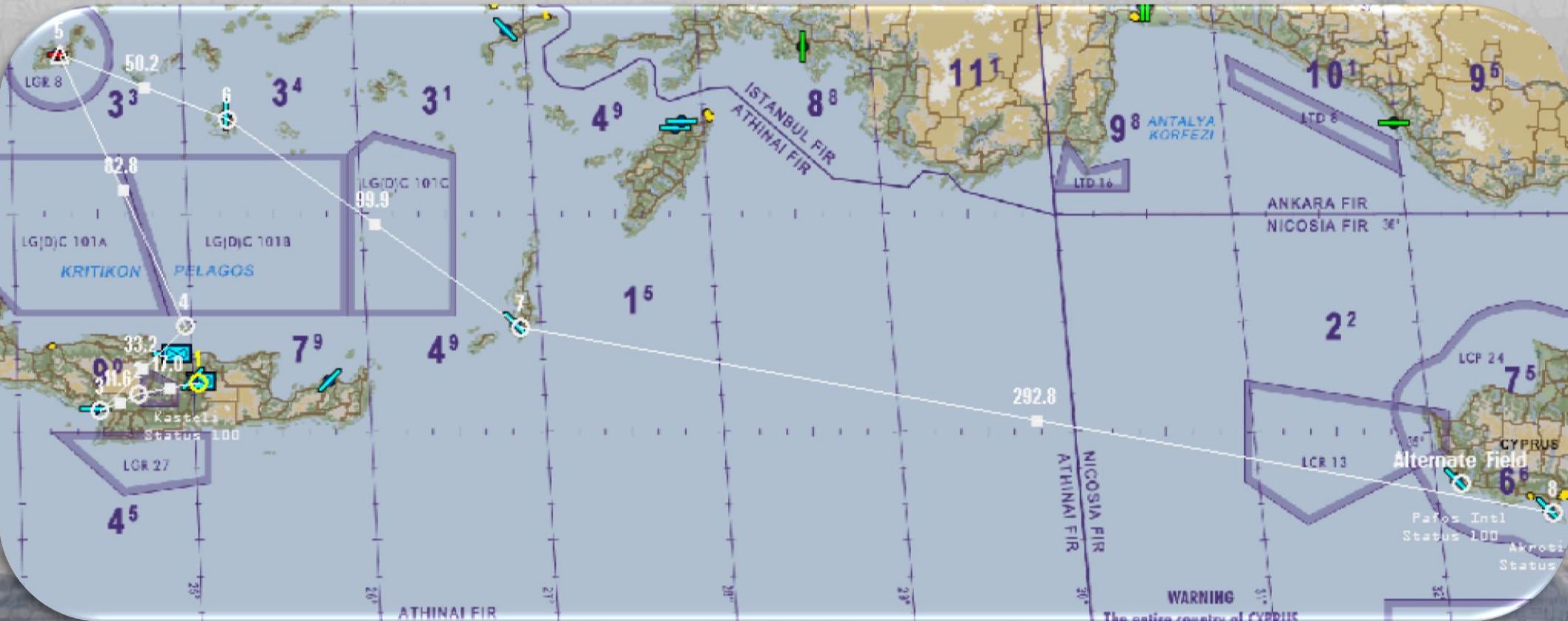
= 21

*Sofern Opasi und Sneakpeek teilnehmen,
wird noch ein weiterer Flug generiert!

„FLY OUT“



FLUGWEG



WP1: Take-Off von KASTELI oder IRAKLION
WP2: Exit-Point ORTEX oder Nav-Point
WP3: TIMBAKION
WP4: DIA
WP5: MILOS
WP6: SANTORINI

WP7: KARPAHTOS
WP8: AKROTIRI
WP9: PATHOS (Alternate)

Achtung:
Vorgabe nach WP3 - Formationsüberflug
KASTELI AB (low) nach vorheriger Anmeldung aus
Süden kommend!



NIKOS KAZANZIKIS (IRAKLION, LGIR)

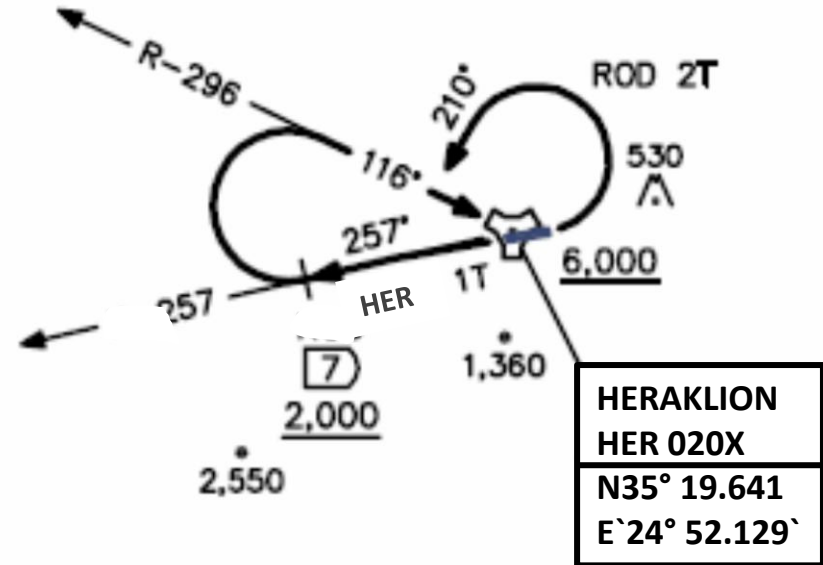
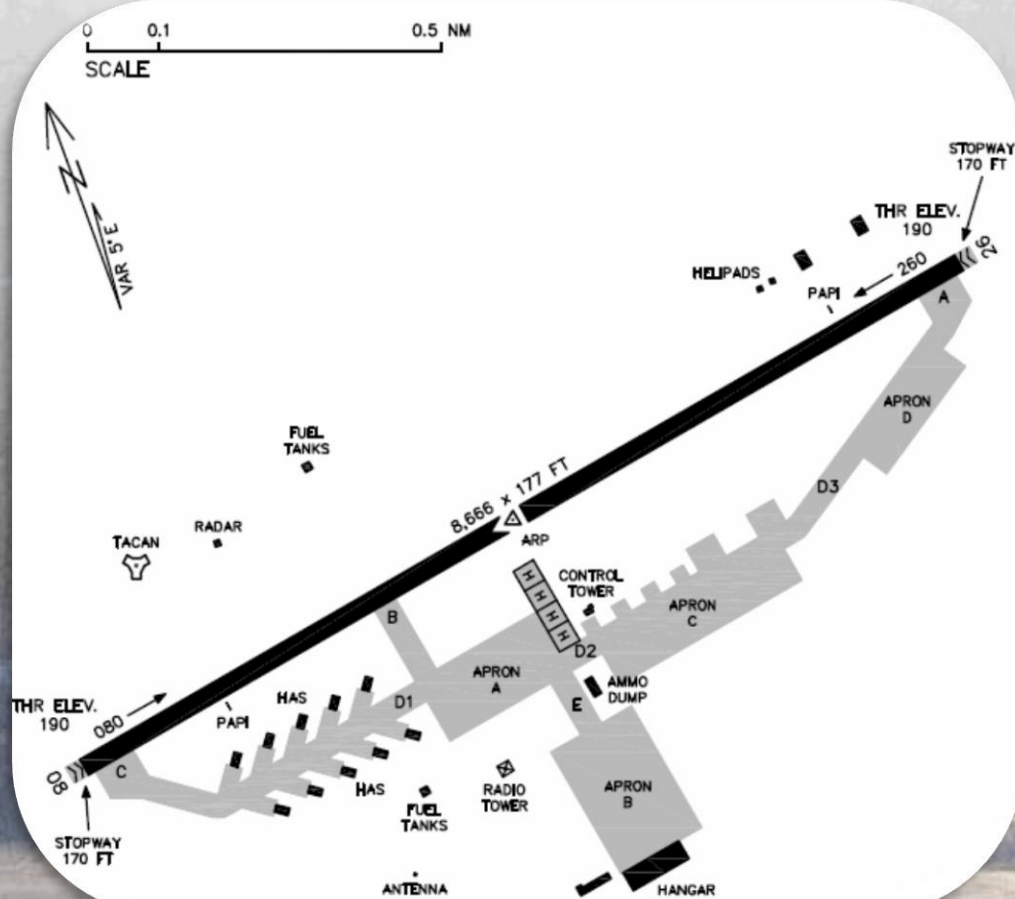
„FLY OUT“



NIKOS KAZANTZAKIS	020 X	200		243.20	120.85	08 / 26	70	N 35° 19.641' E 24° 52.129'
-------------------	-------	-----	--	--------	--------	---------	----	-----------------------------



NIKOS KAZANZIKIS (IRAKLION)



HERAKLION HER 020X N35° 19.641 E 24° 52.129'

T.A. 6,000

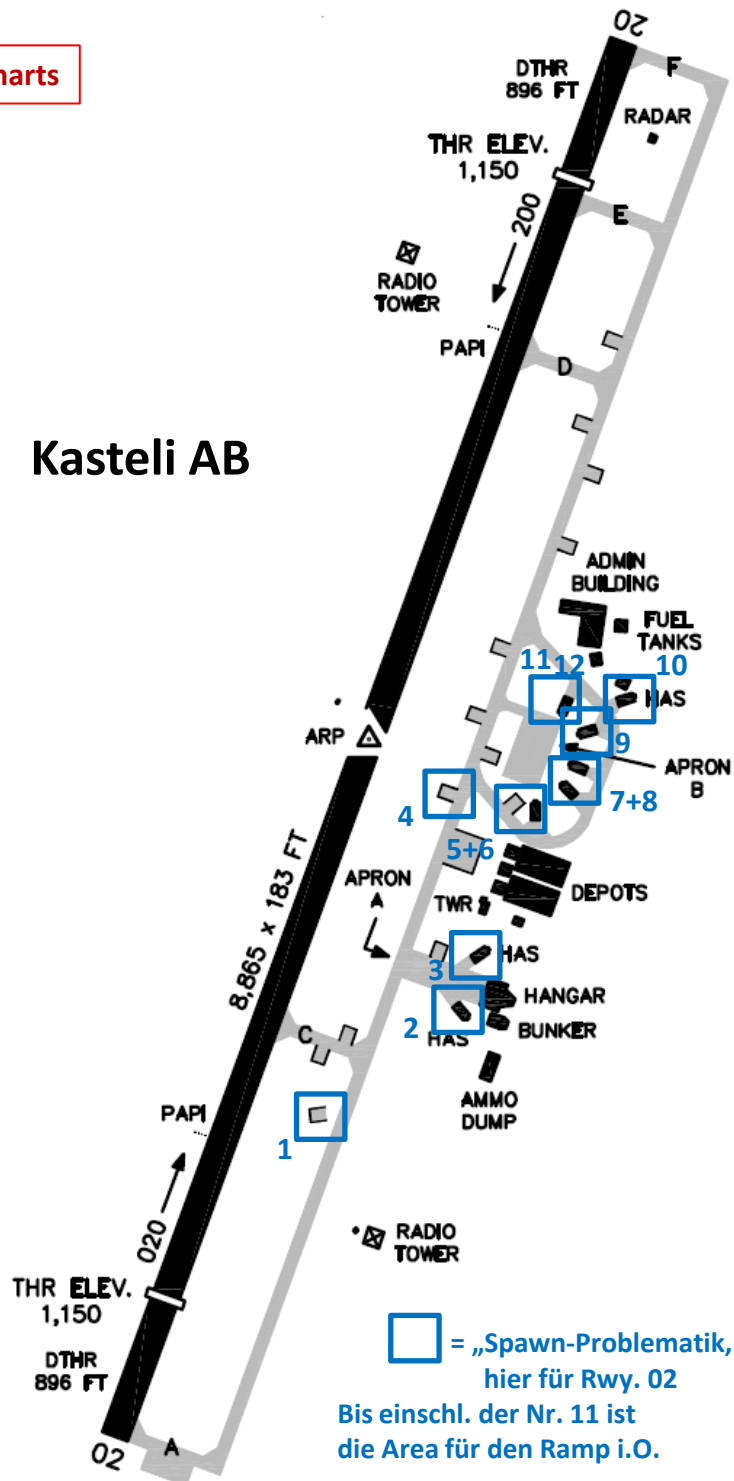
DEPARTURE ROUTE DESCRIPTION RWY 08 & 26

HER 1T: Climb on track 260 to intercept ROD R-257 outbound. Cross ROD R-257/7 DME at 2,000 or above and climb right turn (300 KTS, bank 30 deg.) to intercept ROD R-296 inbound to ROD TACAN not below 6,000. Cross HER TACAN and proceed to destination.

HER 2T: After take off climb left turn (300 KTS, bank 30 deg.) heading 210 to intercept ROD R-257 outbound. Cross ROD R-257/7 DME above 2,000 and climb right turn (300 KTS, bank 30 deg.) to intercept ROD R-296 inbound to ROD TACAN not below 6,000. Cross ROD TACAN and proceed to destination.

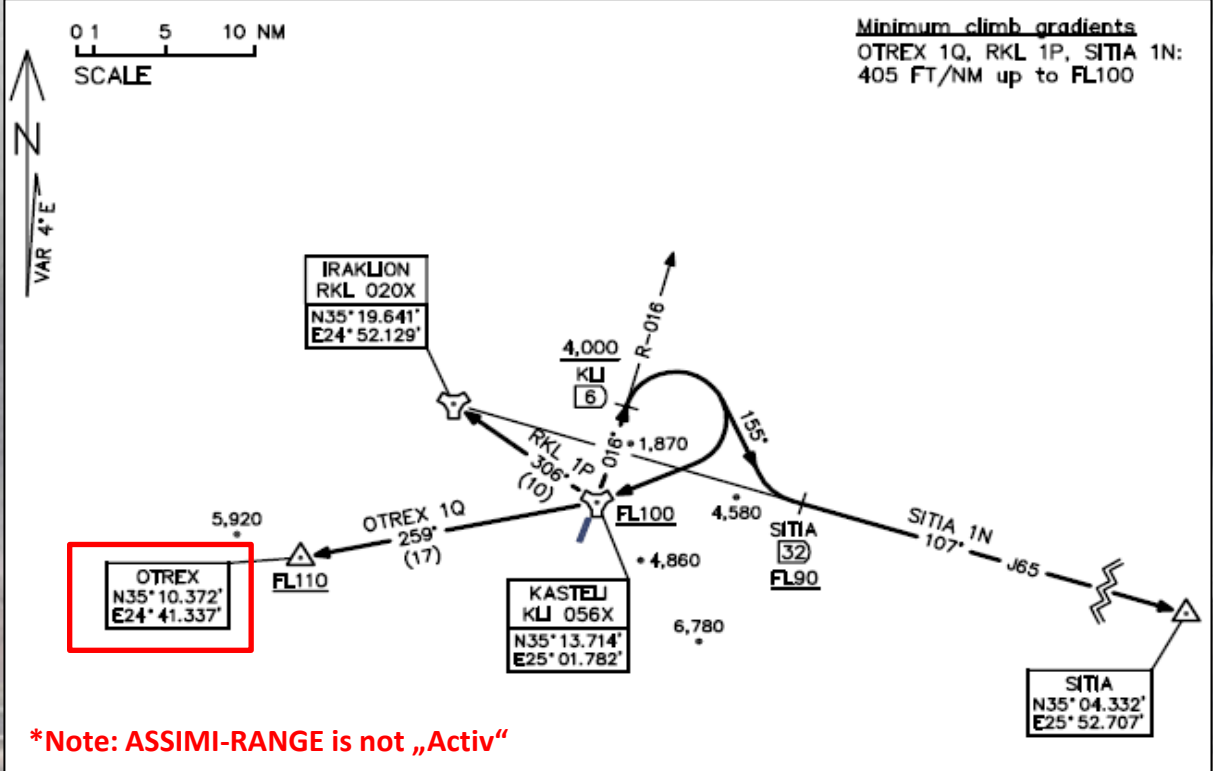


Kasteli AB



AEGEAN Theater 1.6

„FLY OUT“



T.A. 6,000	
DEPARTURE ROUTE DESCRIPTION RWY 02	
OTREX 1Q:	Climb on track 020 to intercept KLI R-016 outbound. Cross KLI R-016/6 DME at 4,000 or above and climb right turn (300 KTS, bank 30 deg.) direct to KLI TACAN not below FL100. Then intercept KLI R-259 outbound to OTREX. Cross OTREX at FL110 or above.
RKL 1P:	Climb on track 020 to intercept KLI R-016 outbound. Cross KLI R-016/6 DME at 4,000 or above and climb right turn (300 KTS, bank 30 deg.) direct to KLI TACAN not below FL100. Then intercept KLI R-306 outbound to RKL TACAN.
SITIA 1N:	Climb on track 020 to intercept KLI R-016 outbound. Cross KLI R-016/6 DME at 4,000 or above and climb right turn (300 KTS, bank 30 deg.) heading 155 to intercept SITIA R-287 inbound to SITIA via AWY J65. Cross SITIA R-287/32 DME at FL90 or above.



NAVIGATIONSDATEN/ZUSATZINFORMATIONEN

Zwischenstopp AKROTIRI Air Base/Cyprus (Gelände- u. Höhenstruktur)

„FLY OUT“





AKROTIRI /Cyprus (ARR)

CYPRUS								
AKROTIRI	107 X	200	109.70 (29)	339.85	130.075	11 / 29	70	
							N 34° 35.994' E 32° 37.117'	

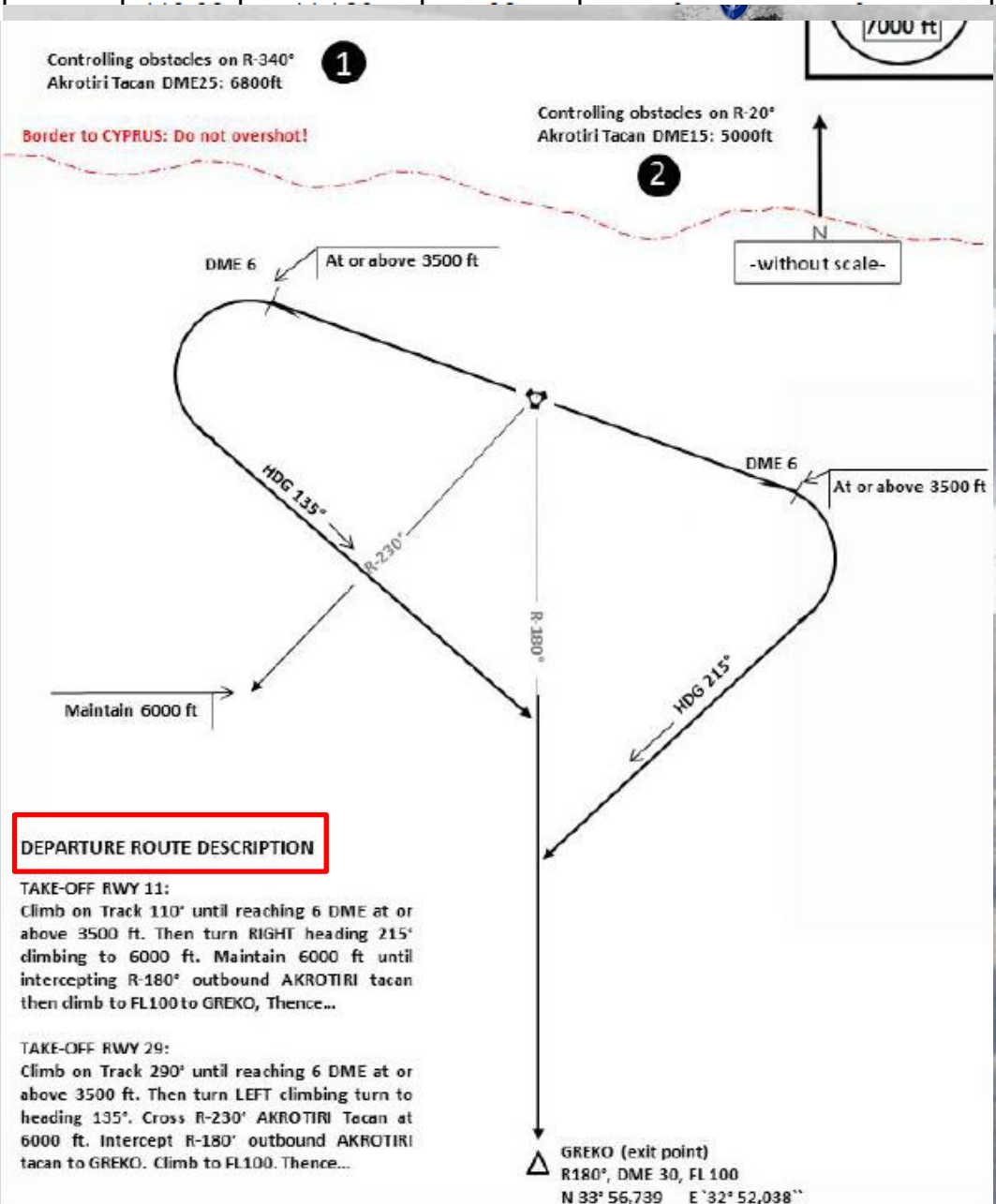
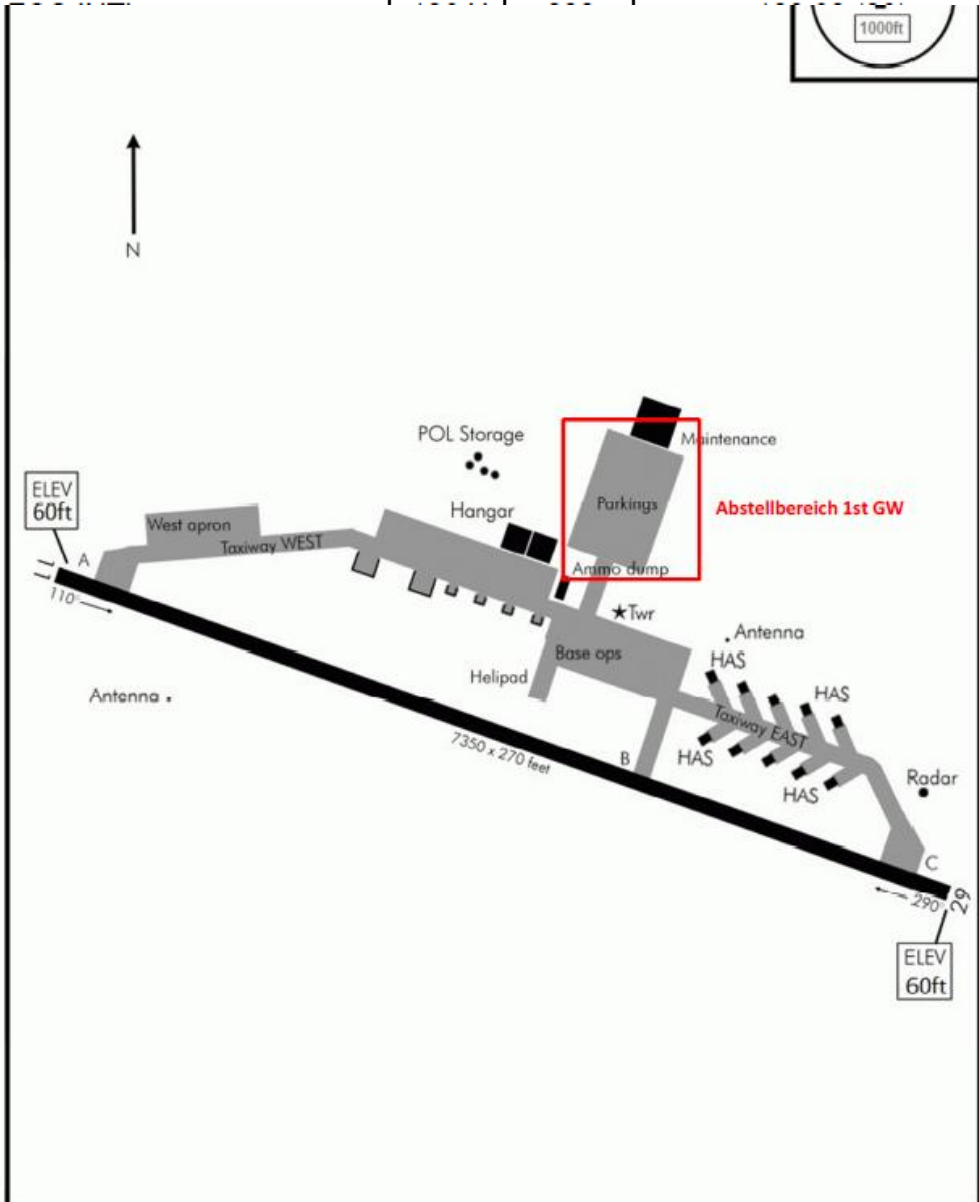
FIR (Flight Information Region) östliches Mittelmeer: In Teilen nicht aktiv!





CYPRUS

AKROTIRI	107 X	200	109.70 (29)	339.85	130.075	11 / 29	70	N 34° 35.994' E 32° 37.117'
----------	-------	-----	-------------	--------	---------	---------	----	-----------------------------



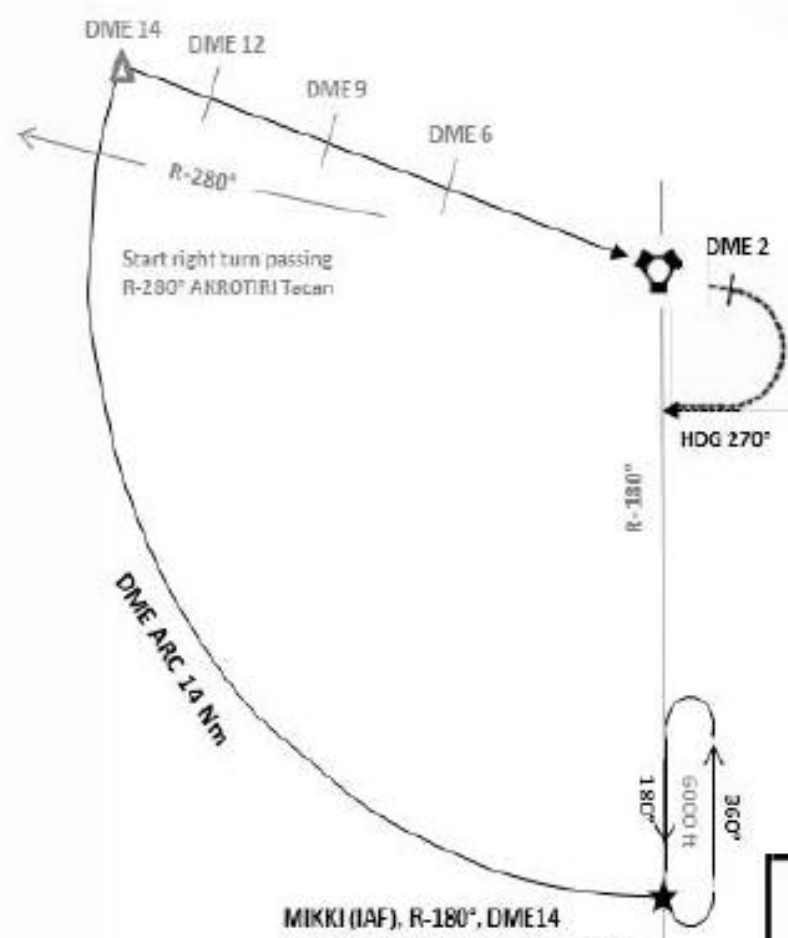
DEPARTURE ROUTE DESCRIPTION

TAKE-OFF RWY 11:
Climb on Track 110° until reaching 6 DME at or above 3500 ft. Then turn RIGHT heading 215° climbing to 6000 ft. Maintain 6000 ft until intercepting R-180° outbound AKROTIRI tacan then climb to FL100 to GREKO, Thence...

TAKE-OFF RWY 29:
Climb on Track 290° until reaching 6 DME at or above 3500 ft. Then turn LEFT climbing turn to heading 135°. Cross R-230° AKROTIRI Tacan at 6000 ft. Intercept R-180° outbound AKROTIRI tacan to GREKO. Climb to FL100. Thence...

GREKO (exit point)
R180°, DME 30, FL 100
N 33° 56,739 E 32° 52,038''

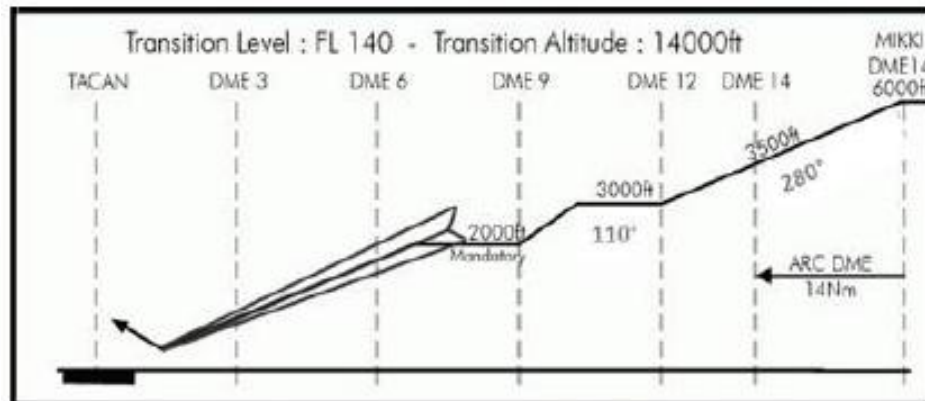
MISSED APPROACH: Climb straight ahead until DME 2 or reaching 1700ft, then RIGHT climbing turn to 6000 heading 270° to intercept Radial 180° outbound and hold at MIKKI at DME 14.



MIKKI (IAF), R-180°, DME14
N 34° 12,905' E 32° 52,670', 6.000ft

DME20, MAINTAIN 15.000ft

ID GREKO, R-180°, DME30
N 33° 56,739' E 32° 52,038', 15.000ft



Transition Level : FL 140 - Transition Altitude : 14000ft

MINIMA:	
ILS 261° (200' AGL)*	Vis: 200-800m
LOC: 481° (420' AGL)**	Vis: 300-1600m
Circling: 1361° (1300' AGL)	Vis: 600-2000m
*When ALS inop, increase vis to 1200m	
**When ALS inop, increase vis to 2000m	



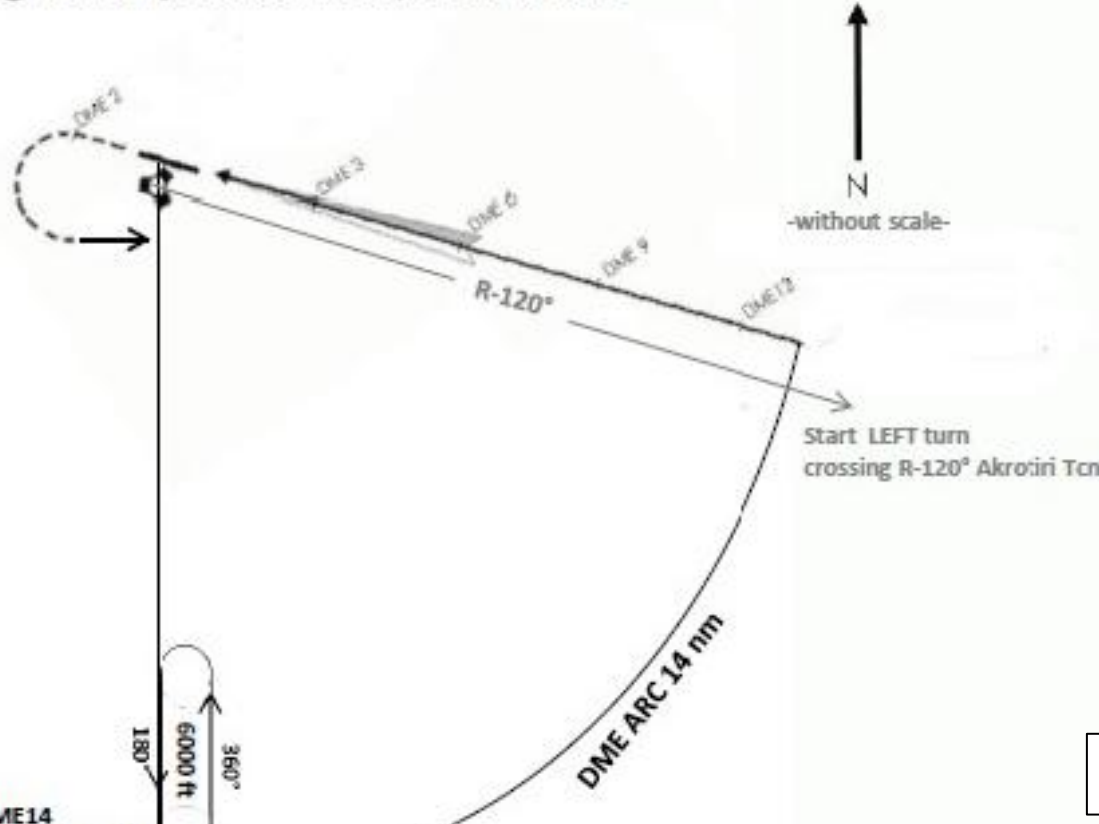
TACAN-APPROACH RWY 11

MISSED APPROACH: Climb on runway heading to DME 2, then climbing LEFT turn to 6000ft heading 090° to intercept R- 180° Outbound AKROTIRITACAN. Hold as published at MIKKI DME 14.

ALSF-1
PAPI



● Controlling Obstacle on R-305°, DME 10 nm: 2600ft

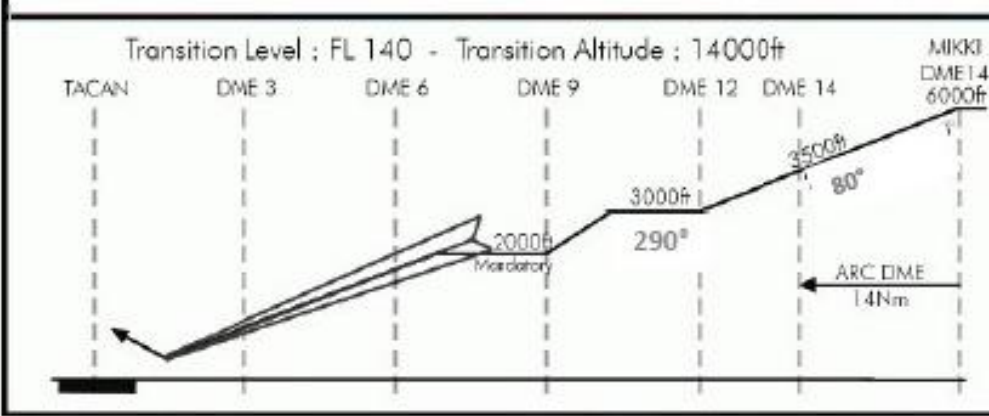


MIKKI (IAF), R-180°, DME14
N 34° 12,905' E 32° 52,670', 6.000ft

DME20, MAINTAIN 15.000ft

ID GREKO, R-180°, DME30
N 33° 56,739' E 32° 52,038', 15.000ft

TACAN-APPROACH RWY 29



MINIMA:	
ILS:261° (200'AGL)*	Vis: 200-800m
LOC:481° (420' AGL)**	Vis: 300-1600m
Circling: 1361° (1300'AGL)	Vis: 600-2000m
*When ALS inop, increase vis to 1200m	
**When ALS inop, increase vis to 2000m	



PAFOS /Cyprus (Alternate)

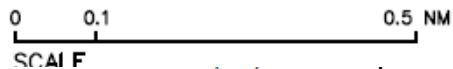
AECEAN Theater



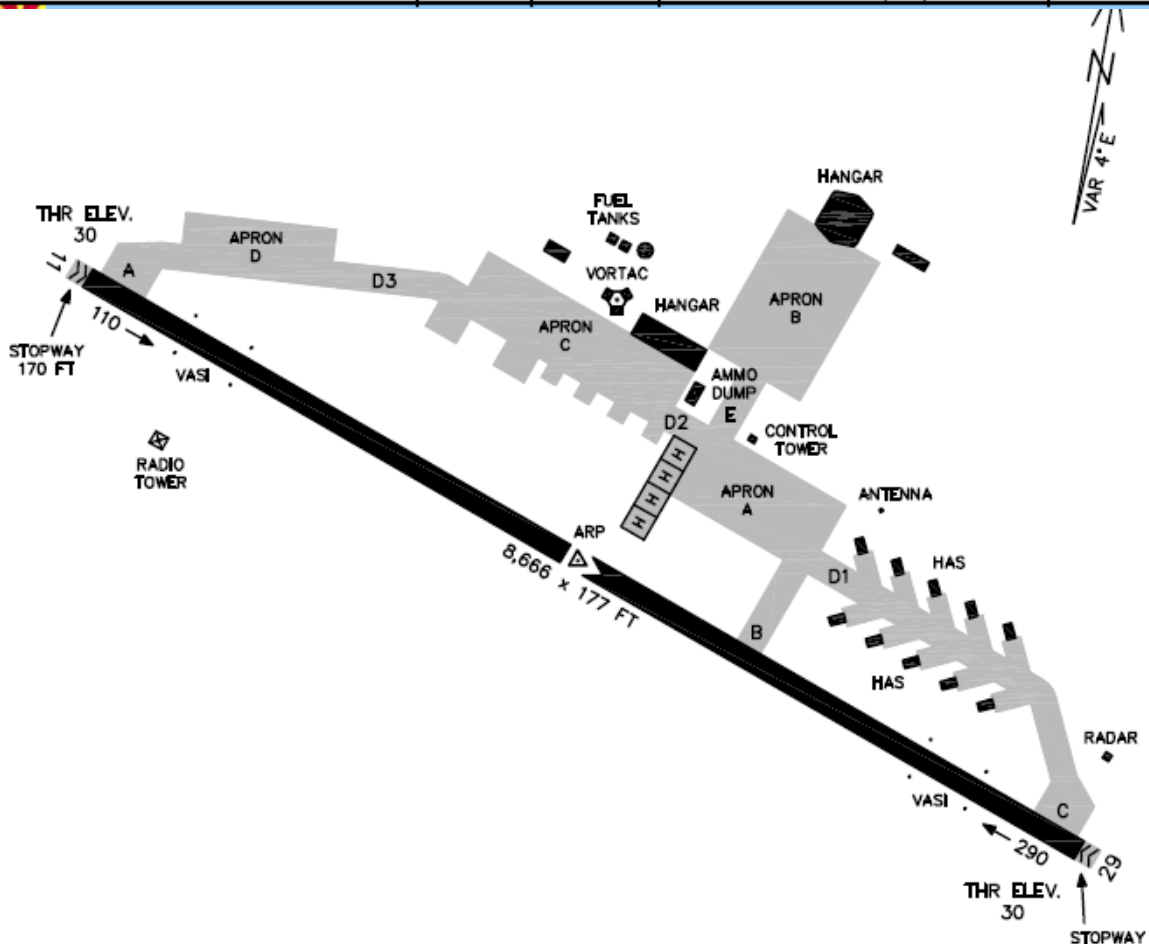
AIRPORT DIAGRAM

PAFOS INTL (LCPH)
PAFOS, CYPRUS

VORTAC PHA Chan 126X	Pafos Tower 119.90	ARP GPS N34° 43.752' E32° 07.339'	RWY TDZE 30
-------------------------	-----------------------	--------------------------------------	-------------



PAFOS INTL	126 X	200	108.90 (29)	119.90	11 / 29	30	N 34° 44.077' E 32° 07.381'
------------	-------	-----	-------------	--------	---------	----	-----------------------------

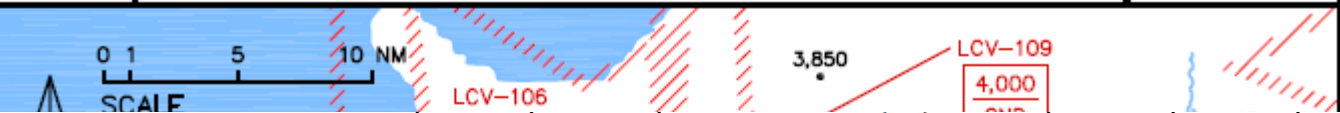
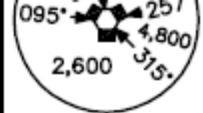


ADDITIONAL RUNWAY INFORMATION

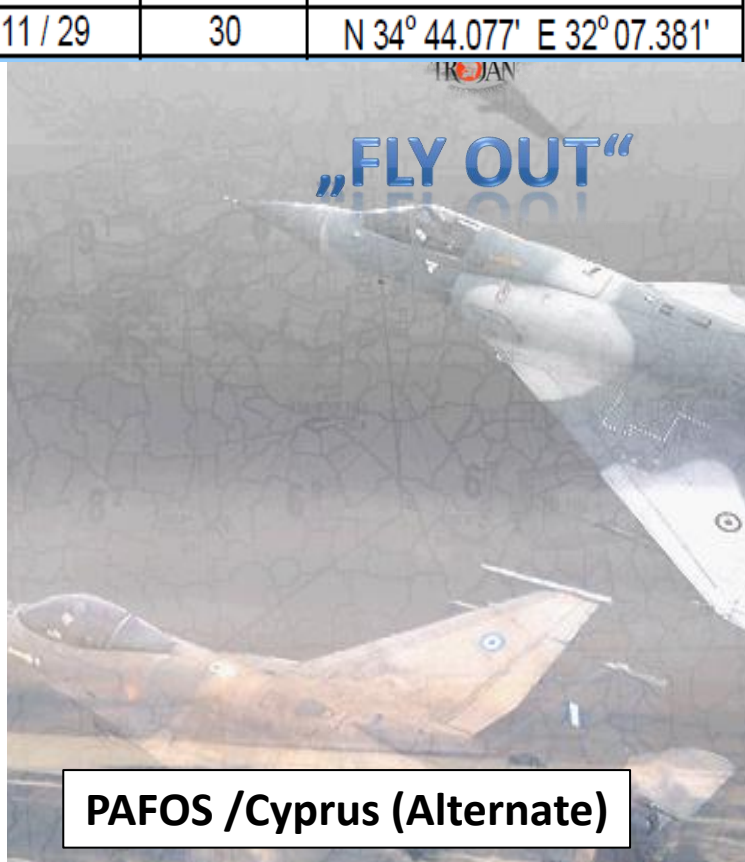
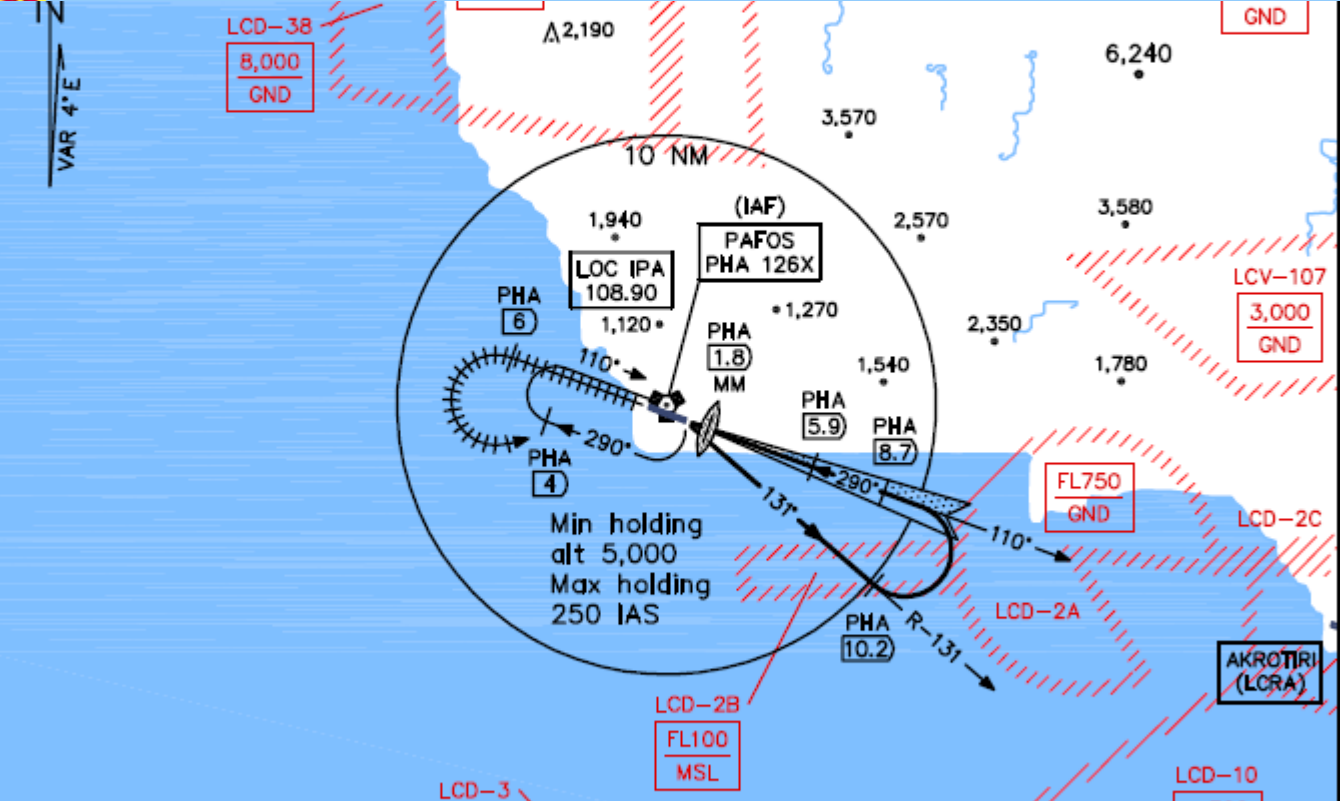
RWY	TORA (FT)	LDA (FT)	ALS	VISUAL AID
11	8,666	8,666	(*) ODALS	VASI - L/R
29	8,666	8,666	(*) ODALS	VASI - L/R



ODALS : MISSED APPROACH: Climb runway with rate 280 FT/NM to 5,000 and pass PHA VORTAC. At PHA 6 DME climb left turn direct to PHA VORTAC. Cross PHA VORTAC and hold at 5,000.

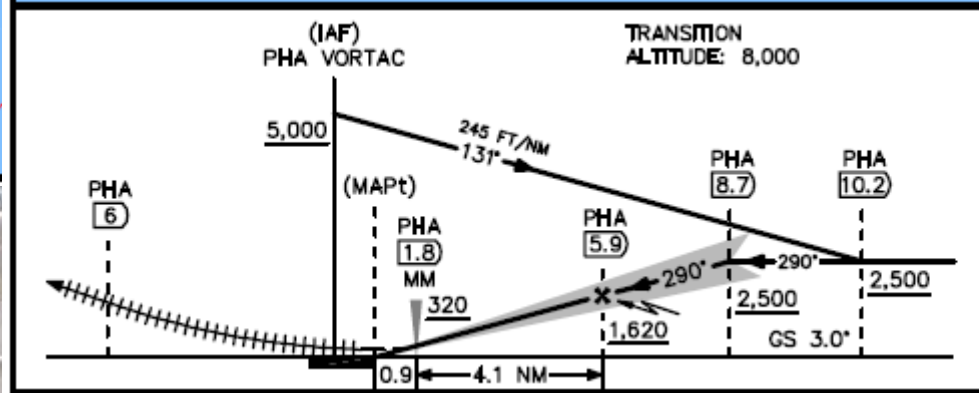


PAFOS INTL	126 X	200	108.90 (29)	—	119.90	11 / 29	30	N 34° 44.077' E 32° 07.381'
------------	-------	-----	-------------	---	--------	---------	----	-----------------------------



PAFOS /Cyprus (Alternate)

EMERG. SAFE ALT. 100 NM 11,400



MINIMUMS

S-ILS 29
DA(H): 230 (200 AGL)
AT PHA 1.5 DME
S-LOC 29
MDA: 370 (340 AGL)
AT PHA 1.9 DME
TDZE 29: 30



AEGEAN Theater

„FLY OUT“



ATIS Military	LGTL INFO: B 011625LT RWY02 TRL90 350/10KT BLU 23/13 Q1013 NOSIG
------------------	---

ATIS Military	LGIR INFO: B 011625LT RWY08 TRL75 350/10KT BLU 23/13 Q1013 NOSIG
------------------	---

Weather Briefing

Fly Out **all Flights**

Sunset: 1900Z

Target

SA 011625LT 350/10KT BLU 23/ 13 Q1013
NOSIG =

FC 011625LT 0112/0124 350/10KT BLU
BCMG 0118/0119 BLU

Departure

LGTL / --- - Kasteli

SA LGTL 011625LT 350/10KT BLU 23/ 13 Q1013
NOSIG =

FC LGTL 011625LT 0112/0124 350/10KT BLU
BCMG 0118/0119 BLU

Alternate

LCPH / PFO - Paphos Int

SA LCPH 011625LT 350/10KT BLU 23/ 13 Q1013
NOSIG =

FC LCPH 011625LT 0112/0124 350/10KT BLU
BCMG 0118/0119 BLU

Extended around departure

LGSR / JTR - Santorini

SA LGSR 011625LT 350/10KT BLU 23/ 13 Q1013
NOSIG =

FC LGSR 011625LT 0112/0124 350/10KT BLU
BCMG 0118/0119 BLU

LGSA / CHQ - Souda

SA LGSA 011625LT 350/10KT BLU 23/ 13 Q1013
NOSIG =

FC LGSA 011625LT 0112/0124 350/10KT BLU
BCMG 0118/0119 BLU

LGKP / AOK - Karpathos

SA LGKP 011625LT 350/10KT BLU 23/ 13 Q1013
NOSIG =

FC LGKP 011625LT 0112/0124 350/10KT BLU
BCMG 0118/0119 BLU

LGTL / --- - Kasteli

SA LGTL 011625LT 350/10KT BLU 23/ 13 Q1013
NOSIG =

FC LGTL 011625LT 0112/0124 350/10KT BLU
BCMG 0118/0119 BLU

LG54 / G54 - Tympaki

SA LG54 011625LT 350/10KT BLU 23/ 13 Q1013
NOSIG =

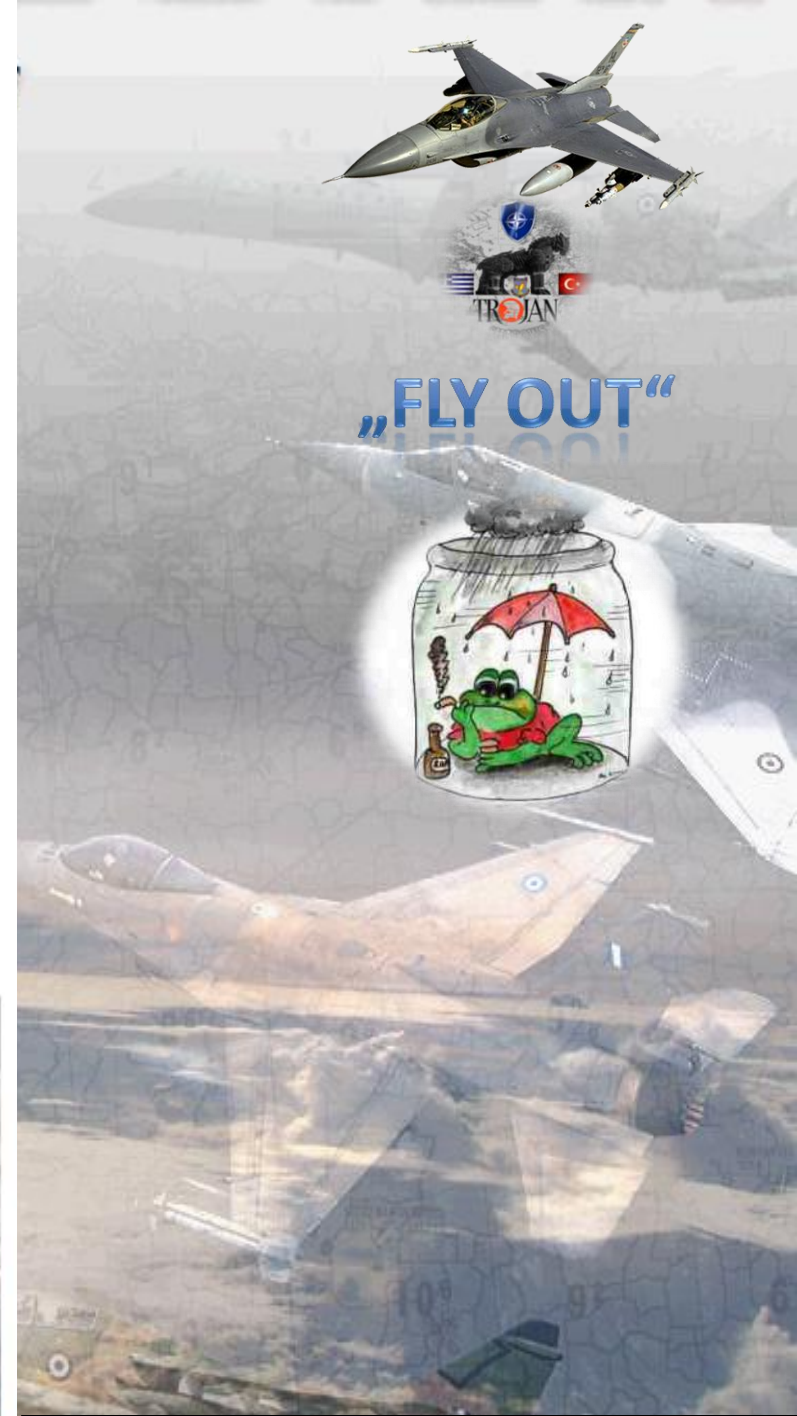
FC LG54 011625LT 0112/0124 350/10KT BLU
BCMG 0118/0119 BLU

COLOUR STATE & ABBREVIATION	LOWEST CLOUD BASE	SURFACE	VISIBILITY
	AT LEAST 3/8 COVERAGE EQUAL TO OR MORE THAN	(RVR) EQUAL TO OR MORE THAN	
Blue - BLU	2500 ft	8 km	Entspricht = 4,31 NM
White - WHT	1500 ft	5 km	
Green - GRN	700 ft	3.7 km	Entspricht = 2,0 NM
Yellow - YLO	300 ft	1600 m	Entspricht = 0,86 NM
Amber - AMB	200 ft	800 m	Entspricht = 0,43 NM
Red - RED	Less than AMB		

„Military Colour Codes“

Sichtweite / Hauptwolkenuntergrenze	< 0,8 km	0,8 - <1,6 km	1,6 - <3,7 km	3,7 - <5 km	5 - <8 km	≥ 8 km
≥ 20000 ft	RED	AMB	YLO	GRN	WHT	BLU+
2500 - <20000 ft	RED	AMB	YLO	GRN	WHT	BLU
1500 - <2500 ft	RED	AMB	YLO	GRN	WHT	WHT
700 - <1500 ft	RED	AMB	YLO	GRN	GRN	GRN
300 - <700 ft	RED	AMB	YLO	YLO	YLO	YLO
200 - <300 ft	RED	AMB	AMB	AMB	AMB	AMB
< 200 ft	RED	RED	RED	RED	RED	RED

VFR Bedingungen herrschen also für „blue“ und „white“, alles andere erfordert Anwendung von IFR!



Auszug aus dem Ausbildungsdokument
„Air Navigation“ by Sparrow



Performance Argos1, Bulldog1

Airport

Select APT **Charts**

Kasteli

RWY: **LGTL**

ELV: 1181 ---

TODA: 8667 f / 2642 m

LDA: 8667 f / 2642 m

Width: 160 f / 49 m

Temp C: F: 73 ISA dev: 10

Wind: / HWC: 9
CWC: 5

QNH: Hpa In

Aircraft

Type:

Empty Weight: 20300

Loadout: 4160 **Set**

Block Fuel: 14234

Taxi Fuel:

Takeoff Fuel: 14034

Gross weight: 38494

Max weight: 42300

Drag Factor: 118

TakeOff

Pitch:

Power:

Rotate: 152

Lift Off: 162

Refusal: 166

Factor: 2.767

Engine Info

Power Plant: **F100-PW-229**

Dry: 17000 lbs

Max: 28500 lbs

Mil Power: 97 %

Input

Speed CAS

Altitude feet

G's g

Actual Temp °C

MAX AB Climb

Climb Schedule 545/0.90

Distance 2.6 nm

Fuel Burned 378 lbs

Time 0 min 20 sec

Cruise

Opt Mach: 0.83

Cruise Alt:

Opt Cruise Alt: 31400

Cruise Ceiling: 34796

Service Ceiling: 35466

Climb Explanation

A constant throttle position (MIL or MAX AB) from brake release to MIL or MAX AB climb speed is used. After takeoff, a constant pitch attitude of 12 degrees is held until 2500 feet AGL. A level acceleration to climb speed is then made. In some cases, climb airspeed will be reached prior to gaining 2500 feet AGL. This technique was developed for performance calculations only and not as an operational procedure.

Result

Speed 287 TAS

Mach 0.46 M

Temperature ISA -15 °C

ISA Dev 0 °C

Density Alt 15000 feet

Turn Radius 1827 feet

MIL Climb

Climb Schedule 400/0.84

Distance 9.1 nm

Fuel Burned 296 lbs

Time 1 min 12 sec



Performance Crimson1 (SEAD)

Airport

Select APT **Charts**

Kasteli

RWY: **LGTL**

ELV: 1181 ---

TODA: 8667 f / 2642 m

LDA: 8667 f / 2642 m

Width: 160 f / 49 m

Temp C: F: 73 ISA dev: 10

Wind: / HWC: 9

QNH: Hpa In CWC: 5

Aircraft

Type:

Empty Weight: **20300**

Loadout: **5833** **Set**

Block Fuel: **14234**

Taxi Fuel:

Takeoff Fuel: **14034**

Gross weight: **40167**

Max weight: **42300**

Drag Factor: **188**

TakeOff

Pitch:

Power:

Rotate: **156**

Lift Off: **166**

Refusal: **163**

Factor: **2.767**

Engine Info

Power Plant: **F100-PW-229**

Dry: **17000 lbs**

Max: **28500 lbs**

Mil Power: **97 %**

Input

Speed **CAS**

Altitude **feet**

G's **g**

Actual Temp **°C**

MAX AB Climb

Climb Schedule **530/0.88**

Distance **17.4 nm**

Fuel Burned **1345 lbs**

Time **2 min 8 sec**

Cruise

Opt Mach: **0.80**

Cruise Alt:

Opt Cruise Alt:

Cruise Ceiling:

Service Ceiling:

Climb Explanation

A constant throttle position (MIL or MAX AB) from brake release to MIL or MAX AB climb speed is used. After takeoff, a constant pitch attitude of 12 degrees is held until 2500 feet AGL. A level acceleration to climb speed is then made. In some cases, climb airspeed will be reached prior to gaining 2500 feet AGL. This technique was developed for performance calculations only and not as an operational procedure.

Result

Speed **287 TAS**

Mach **0.46 M**

Temperature ISA **-15 °C**

ISA Dev **0 °C**

Density Alt **15000 feet**

Turn Radius **1827 feet**

MIL Climb

Climb Schedule **365/0.80**

Distance **88.9 nm**

Fuel Burned **1676 lbs**

Time **11 min 29 sec**



Performance

Dipper1, Eyeball1

Airport

Select APT

Charts

Iraklion

RWY: 08 LGIR

ELV: 114 HER

TODA: 8667 f / 2642 m

LDA: 8667 f / 2642 m

Width: 160 f / 49 m

Temp C: 23 F: 73 ISA dev: 8

Wind: 350 / 10 HWC: -6
CWC: 8

QNH: 1013 Hpa 29.91 In

Aircraft

Type: F-16C-52+

Empty Weight: 20300

Loadout: 4160 Set

Block Fuel: 14234

Taxi Fuel: 200

Takeoff Fuel: 14034

Gross weight: 38494

Max weight: 42300

Drag Factor: 118

TakeOff

Pitch: 13

Power: MIL

Rotate: 152

Lift Off: 162

Refusal: 158

Factor: 2.536

Engine Info

Power Plant: F100-PW-229

Dry: 17000 lbs

Max: 28500 lbs

Mil Power: 97 %

Input

Speed 230 CAS

Altitude 15000 feet

G's 4 g

Actual Temp -15 °C

Result

Speed 287 TAS

Mach 0.46 M

Temperature ISA -15 °C

ISA Dev 0 °C

Density Alt 15000 feet

Turn Radius 1827 feet

MAX AB Climb

Climb Schedule 545/0.90

Distance 4.4 nm

Fuel Burned 580 lbs

Time 0 min 35 sec

Cruise

Opt Mach: 0.83

Cruise Alt: 15700

Opt Cruise Alt: 31400

Cruise Ceiling: 34796

Service Ceiling: 35466

Climb Explanation

A constant throttle position (MIL or MAX AB) from brake release to MIL or MAX AB climb speed is used. After takeoff, a constant pitch attitude of 12 degrees is held until 2500 feet AGL. A level acceleration to climb speed is then made. In some cases, climb airspeed will be reached prior to gaining 2500 feet AGL. This technique was developed for performance calculations only and not as an operational procedure.

MIL Climb

Climb Schedule 400/0.84

Distance 16.0 nm

Fuel Burned 477 lbs

Time 2 min 9 sec